

Westland Monitor Farm Project

Weekly Update as at week ending Wednesday 28 April 2021

CO Comment

The season is ending quickly, remember to be careful not to milk on too long, losing the opportunity to gain some valuable body condition score that will contribute to longer term goals. If you have made the decision to milk on, then be strategic with which cows this is done with. For many farms, the focus is on restoring BCS and meeting feed cover targets for next calving.

There have been some less than predicted reproduction and production results across the region this season which reflects the difficulty in getting cows to target BCS at critical times, and then the difficulty maintaining high intakes during the wet spring.

Decisions made at drying off influence your herd's performance for the next 6 to 12 months. Before drying off, continue all recommendations from the lactation period, and consider these decisions:

- Which cows will need to be dried off early, and when?
- Which cows need to be culled based on this year's mastitis records?
- What dry cow treatment approach to use at drying off?
- Who will administer the dry cow treatments? Have they been trained sufficiently?
- How will milk yields be reduced in the last 1-2 weeks before drying off?
- How will cows be managed for the first 3 weeks after dry off?

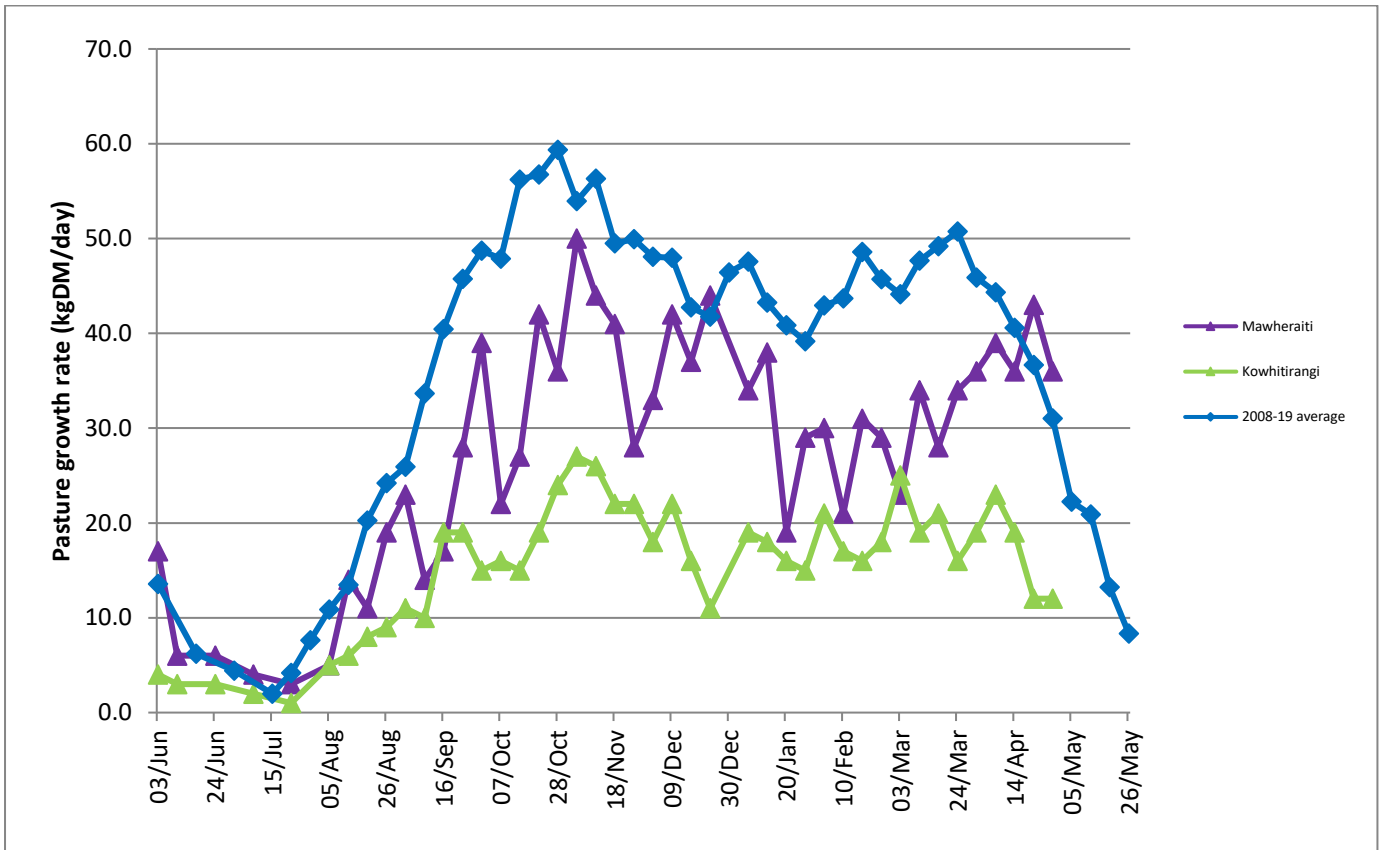
Hopefully most already have a plan around this, but if you want to refresh on some of the principles of drying off visit <https://www.dairynz.co.nz/animal/cow-health/mastitis/drying-off/>

Farm Summary

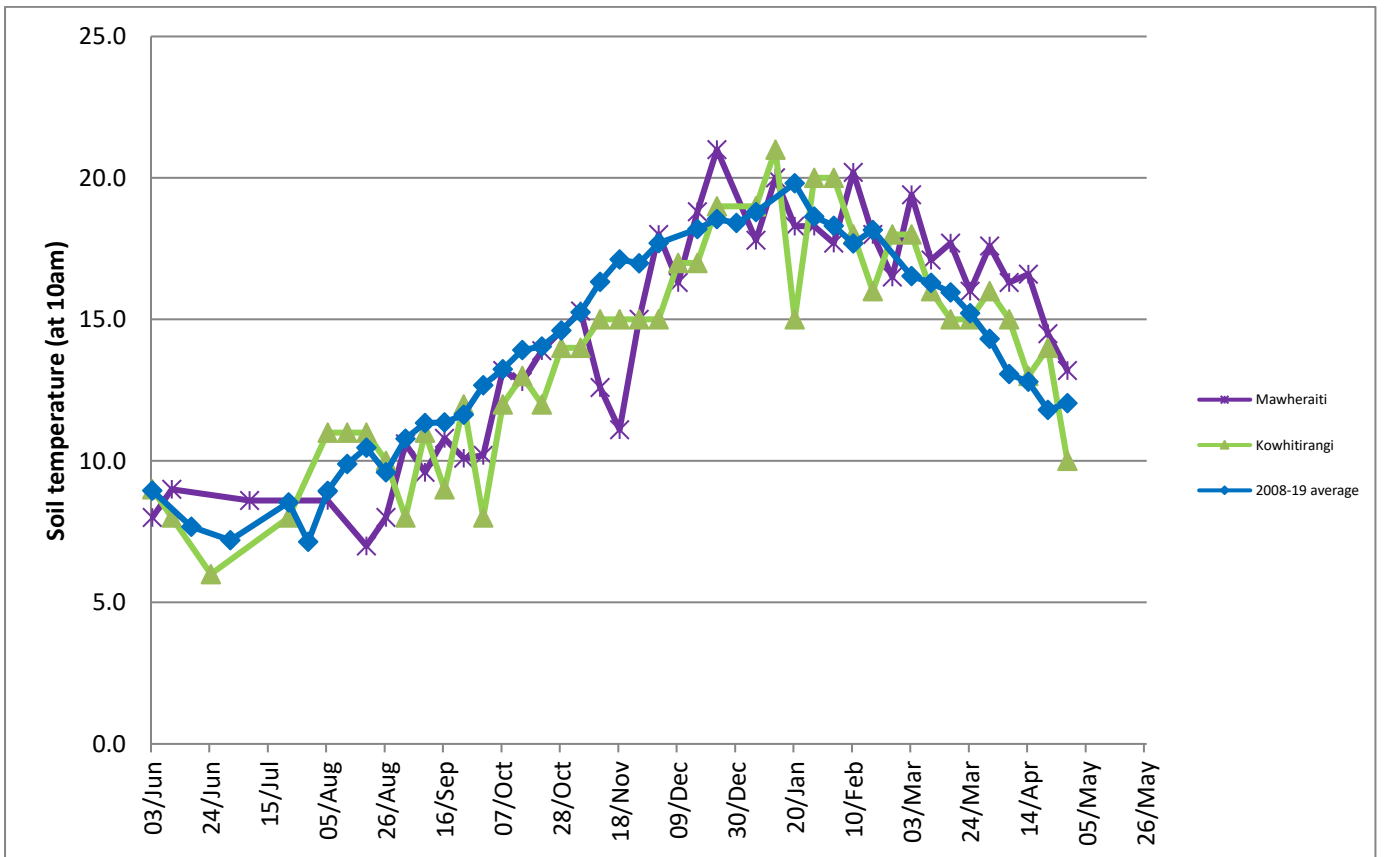
	Mawheraiti	Kowhitirangi
Average cover (kg DM/ha)	2262	1877
APC (21 April)	2273	1916
Rotation length (days)	30	26.5
Stocking rate	2.4	2.2
Percentage in milk	100%	100%
Milksolids kg/cow	1.45	1.48
Milksolids kg/ha	3.2	3.4
MS/cow (season to date)	431	405
MS/ha (season to date)	1018	872
N (kg/ha) year to date	245	203
Current N application rate kg N/ha	22	9
	7 April	12 April
DM%	11.7	9.8
Pasture ME	11.6	11.8
Pasture NDF	51.3	46.5
Pasture CP	28.0	26.0
Target Intake (kg DM/cow/d)	18	18
Supplement (kg/cow/day)	3	3.4
Soil temperature (°C)	13.2	10
Growth Rate (kg DM/day)	36	12
Rainfall	33	108
Conditions for farmwalk	Very wet and freezing cold	Fine, sunny
Notes:	Went once a day 20 th , cows seem to be holding; Grass good, heifers home following cows getting wet and a bit colder; Getting some fencing done had club fun-day wet day.	Jeremy has 95 R2s coming home at the end of the month. Doesn't take over new farm until 1 st June. Lots of extra mouths to feed for a month.

NB: pasture quality data are for 1 sample collected from each farm.

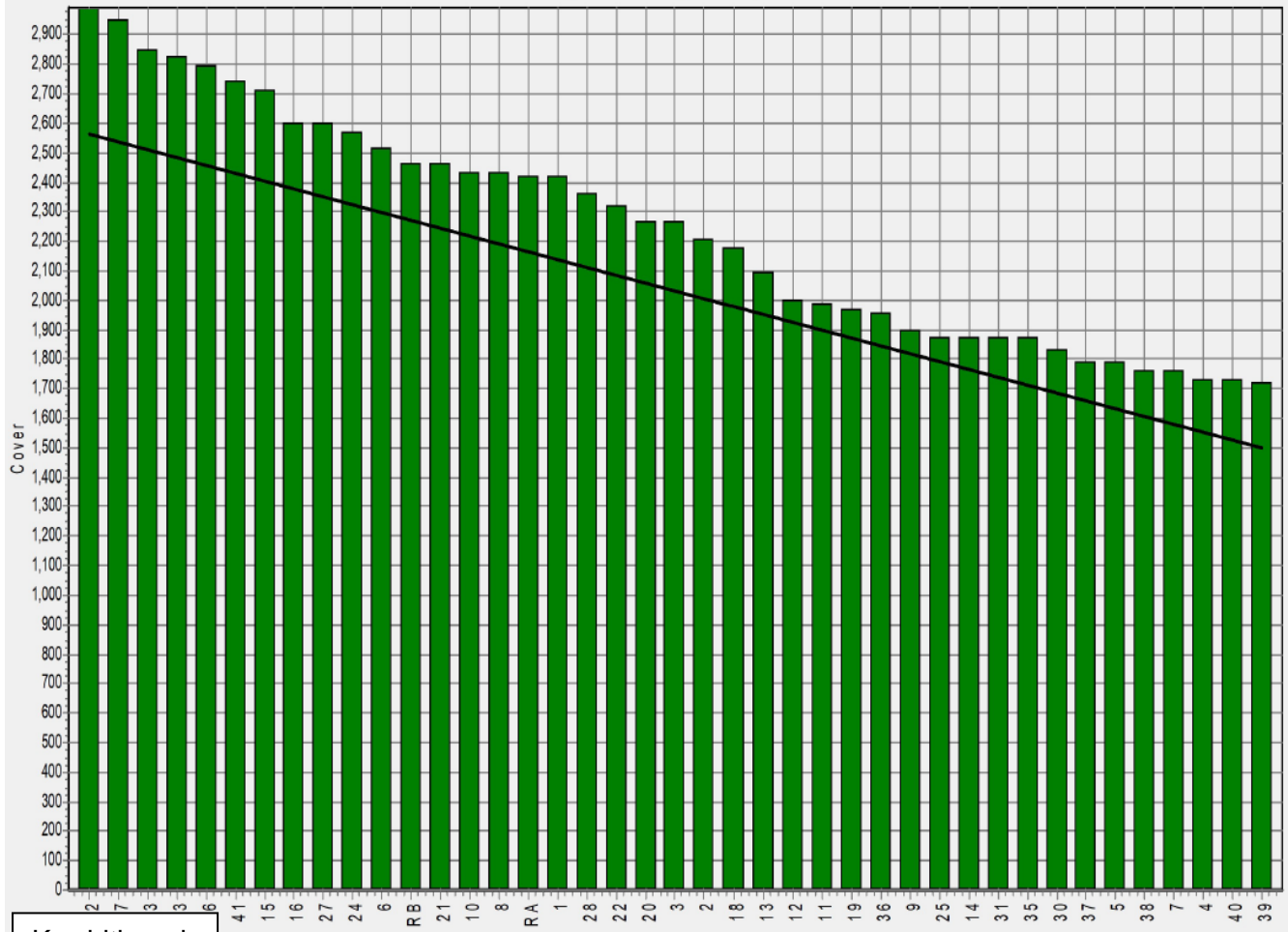
Weekly Pasture Growth Rates



Weekly Soil Temperature



Mawheraiti



Kowhitirangi

