

# Westland Monitor Farm Project

Weekly Update as at week ending Wednesday 28 October 2020

## CO Comment

Pasture growth rates have been low on waterlogged soils but could change quickly with the warmer weather. If pasture cover remains low, it is tempting to speed up the rotation to improve feeding levels. The risk that accompanies this is that pasture growth is penalised by paddocks being grazed too soon after the previous grazing. Fast rotations only work well when grass is growing well.

Expect the consequences of wet conditions and any resulting failures to achieve grazing residuals to show up over time. You will see elongated stems as plants change towards reproduction. Higher residuals lead to physically taller plants that have higher fibre levels and are less digestible.

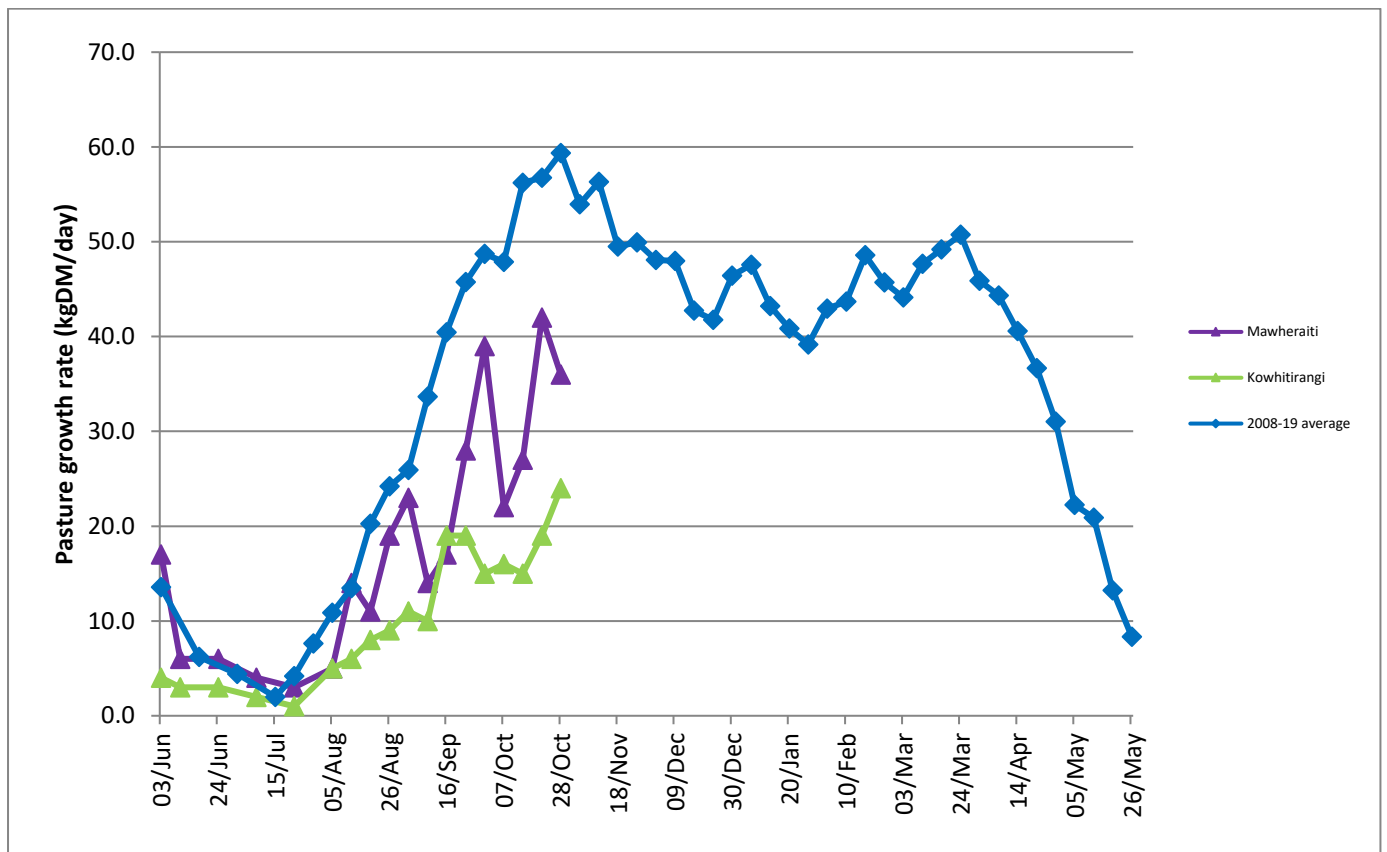
Herds with a lower than usual body condition score will potentially have lower than expected three-week submission rates. This means more than normal bull power will be required after AB finishes. One bull is required to be in the herd for every 30 non pregnant cows. A decrease in submission rate by 10% from normal for 300 cows means one additional bull will need to be in the herd for natural mating compared to normal. Also review the bulls on hand to cover breakdowns where necessary. If bull numbers are locked in, consider continuing AB matings for longer than normal to reduce the pressure on bulls.

## Farm Summary

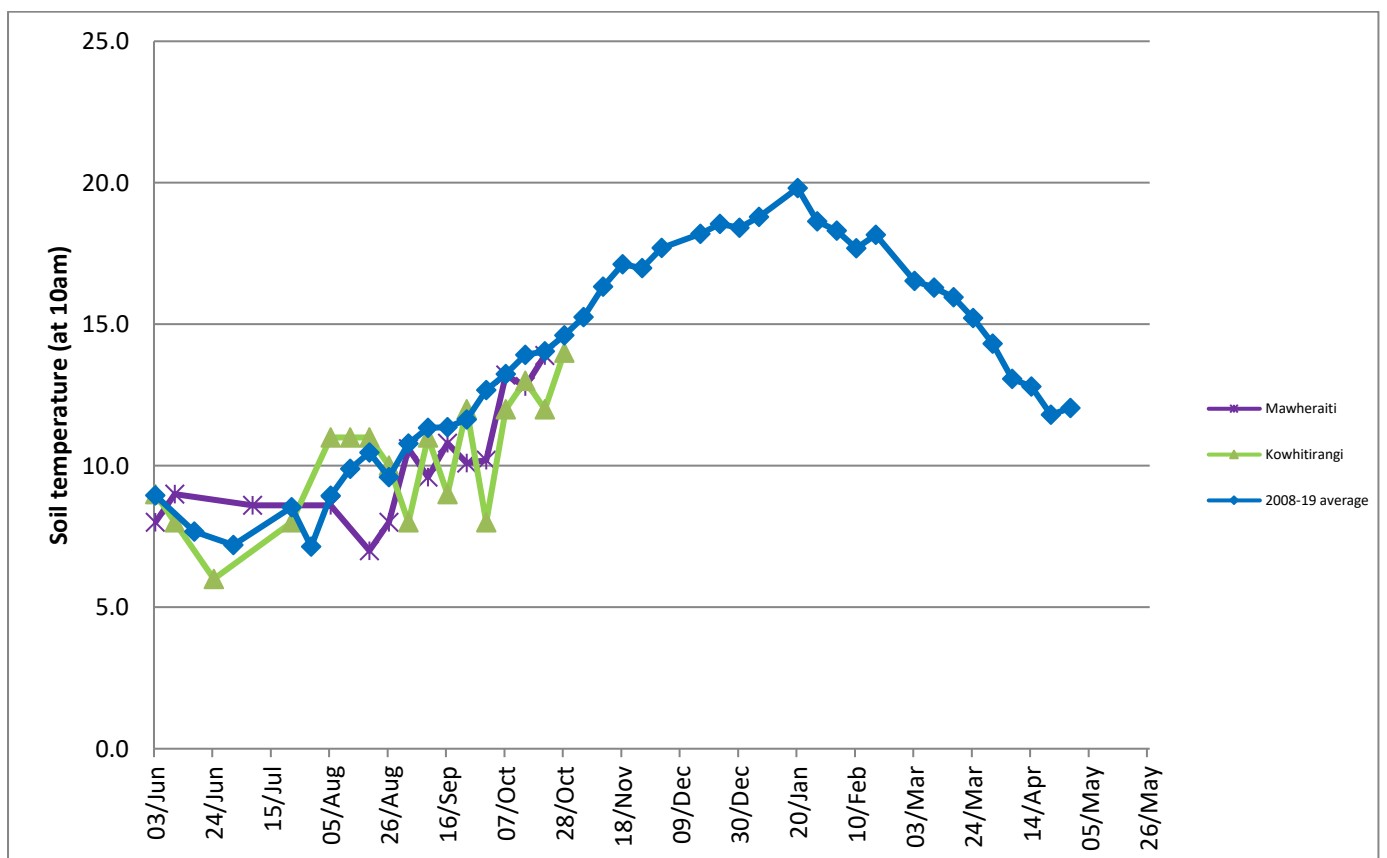
	Mawheraiti	Kowhitirangi
Average cover (kg DM/ha)	2069	2020
APC (21 October)	2022	1973
Rotation length (days)	24	24
Stocking rate	2.3	2.2
Percentage in milk	100%	99%
Milksolids kg/cow	2.18	1.88
Milksolids kg/ha	5.0	4.2
MS/cow (season to date)	110	111
MS/ha (season to date)	279	246
N (kg/ha) year to date	80	70
Current N application rate kg N/ha	22	-
	5 Oct	14 Oct
DM%	14.9	12.9
Pasture ME	11.5	12.1
Pasture NDF	47.0	49.0
Pasture CP	24.7	31.7
Target Intake (kg DM/cow/d)	18	18
Supplement (kg/cow/day)	1.4	4.5
Soil temperature (°C)		14.0
Growth Rate (kg DM/day)	36	24
Rainfall	15	130
Conditions for farmwalk	Wind, rain	Hot and sunny

NB: pasture quality data are for 1 sample collected from each farm

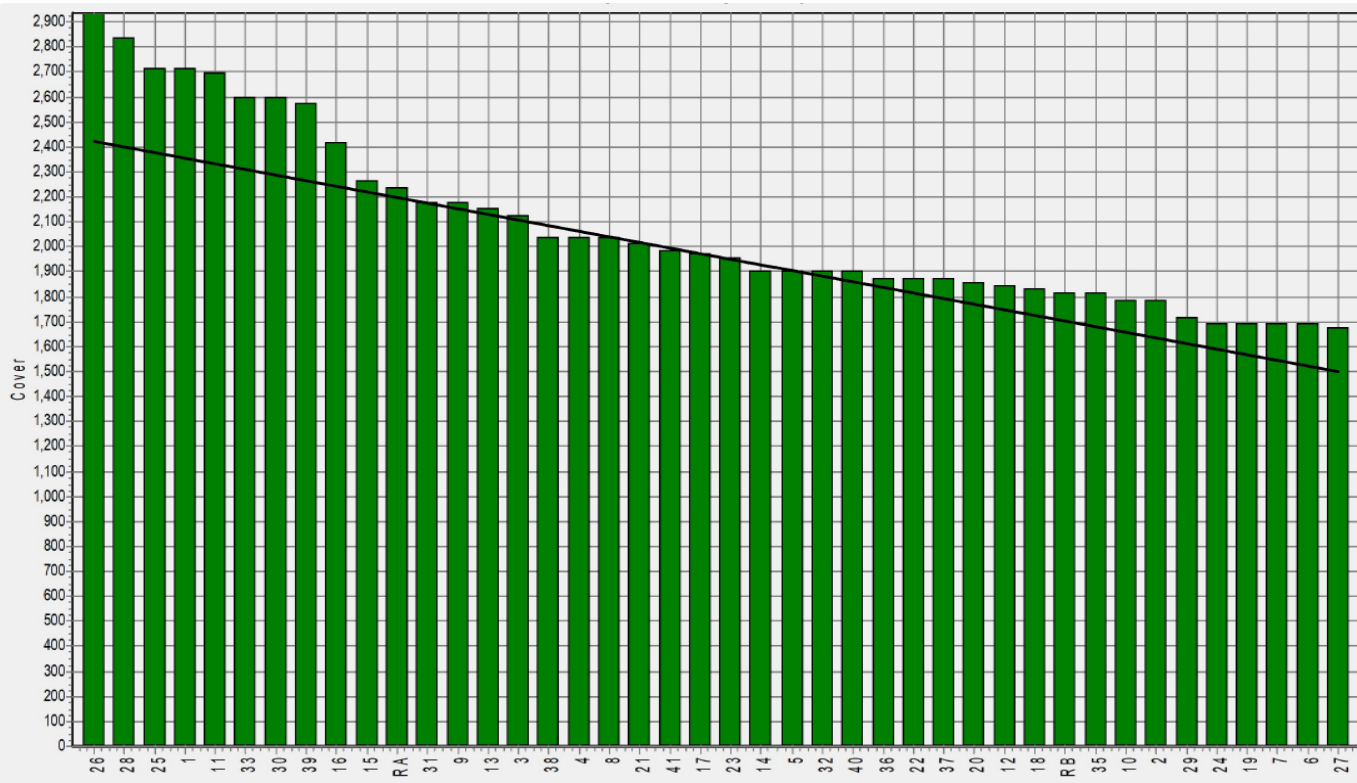
## Weekly Pasture Growth Rates



## Weekly Soil Temperature



### Mawheraiti



### Kowhitirangi

