

Westland Monitor Farm Project

Weekly Update as at week ending Wednesday 3 February 2021

CO Comment

As pregnancy test results come to hand, now is the time to assess the position of next season's core herd. Assessing the current BCS position of the herd and utilising this to make decisions around what gains will be required to protect the position of the core herd for the planned start of calving. This will give you an opportunity to plan when non pregnant animals will leave the farm, potential supplements required and dry off dates for any critical animals.

Conditions are favourable for building pasture cover. It is timely to build a feed budget to assess the feed situation on farm over the coming months. Assess and make a plan now to ensure you are best placed come June 1. For a range of feed management tools visit <https://www.dairynz.co.nz/feed/feed-management-tools/>.

Buller Vets have recorded Facial Eczema spore counts at 5000 in Reefton and Karamea. It is best to do your own samples on farm, but this is an indication that counts are on the rise and to be vigilant with any preventative treatment.

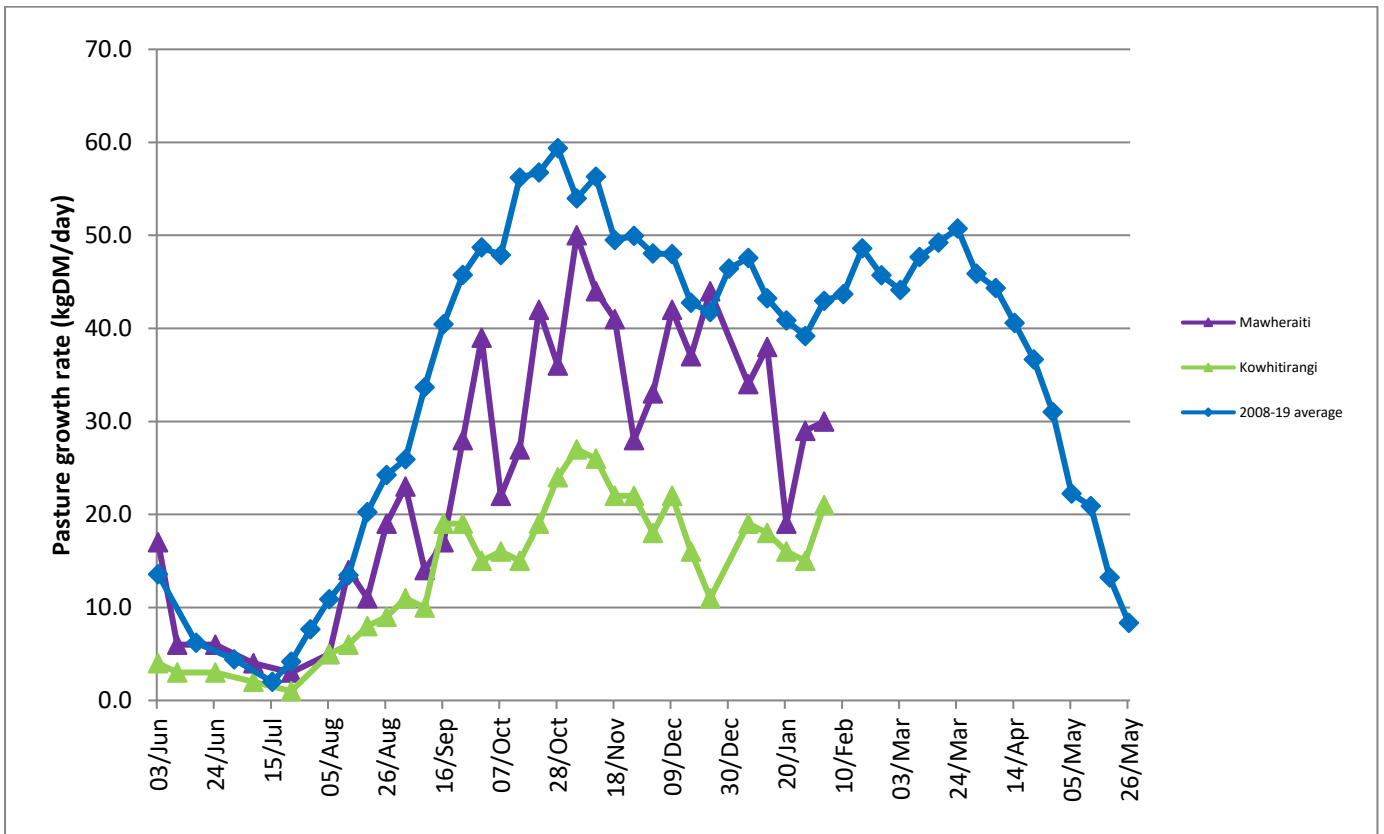
Beef and Lamb NZ supported by DairyNZ are doing a session in Ikamatua on Feb 16th where West Coast Vets will be discussing Facial Eczema. The latest research and information will be presented on this potentially devastating disease. Visit <https://beeflambnz.com/events/blnz-facial-eczema-workshop-ikamatua> to register.

Farm Summary

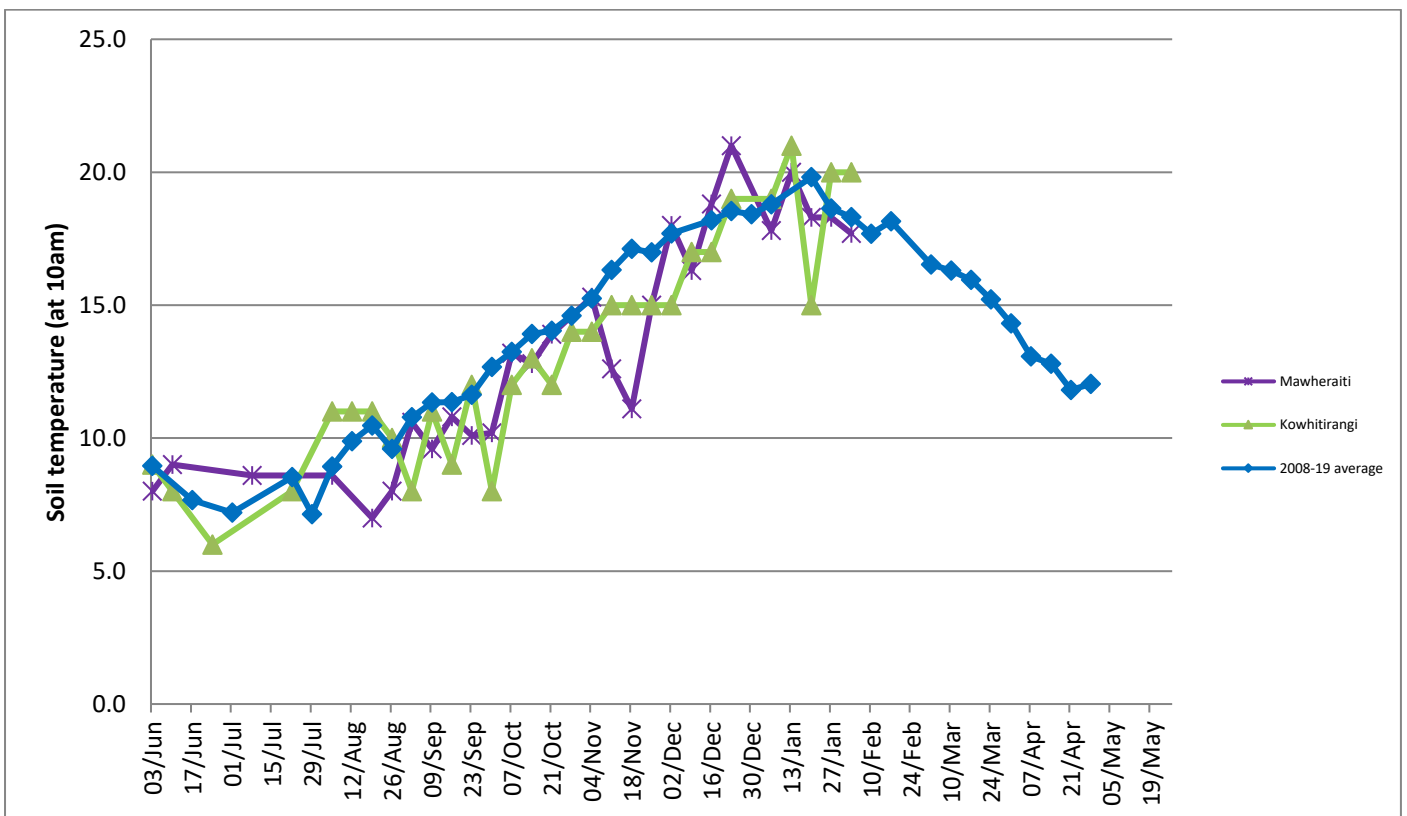
	Mawheraiti	Kowhitirangi
Average cover (kg DM/ha)	2022	1962
APC (20 January)	1989	1924
Rotation length (days)	26	29
Stocking rate	2.3	2.4
Percentage in milk	100%	100%
Milksolids kg/cow	1.72	1.54
Milksolids kg/ha	4.0	3.6
MS/cow (season to date)	301	284
MS/ha (season to date)	707	612
N (kg/ha) year to date	22	-
Current N application rate kg N/ha	169	176
	11 Jan	13 Jan
DM%	17.0	16.0
Pasture ME	11.6	11.2
Pasture NDF	45.9	49.2
Pasture CP	16.6	18.8
Target Intake (kg DM/cow/d)	18	18
Supplement (kg/cow/day)	0.0	2.4
Soil temperature (°C)	17.7	20.0
Growth Rate (kg DM/day)	30	21
Rainfall	10	19
Conditions for farmwalk	Hot and fine	Hot and fine
Notes:	All irrigation on, oats in	

NB: pasture quality data are for 1 sample collected from each farm.

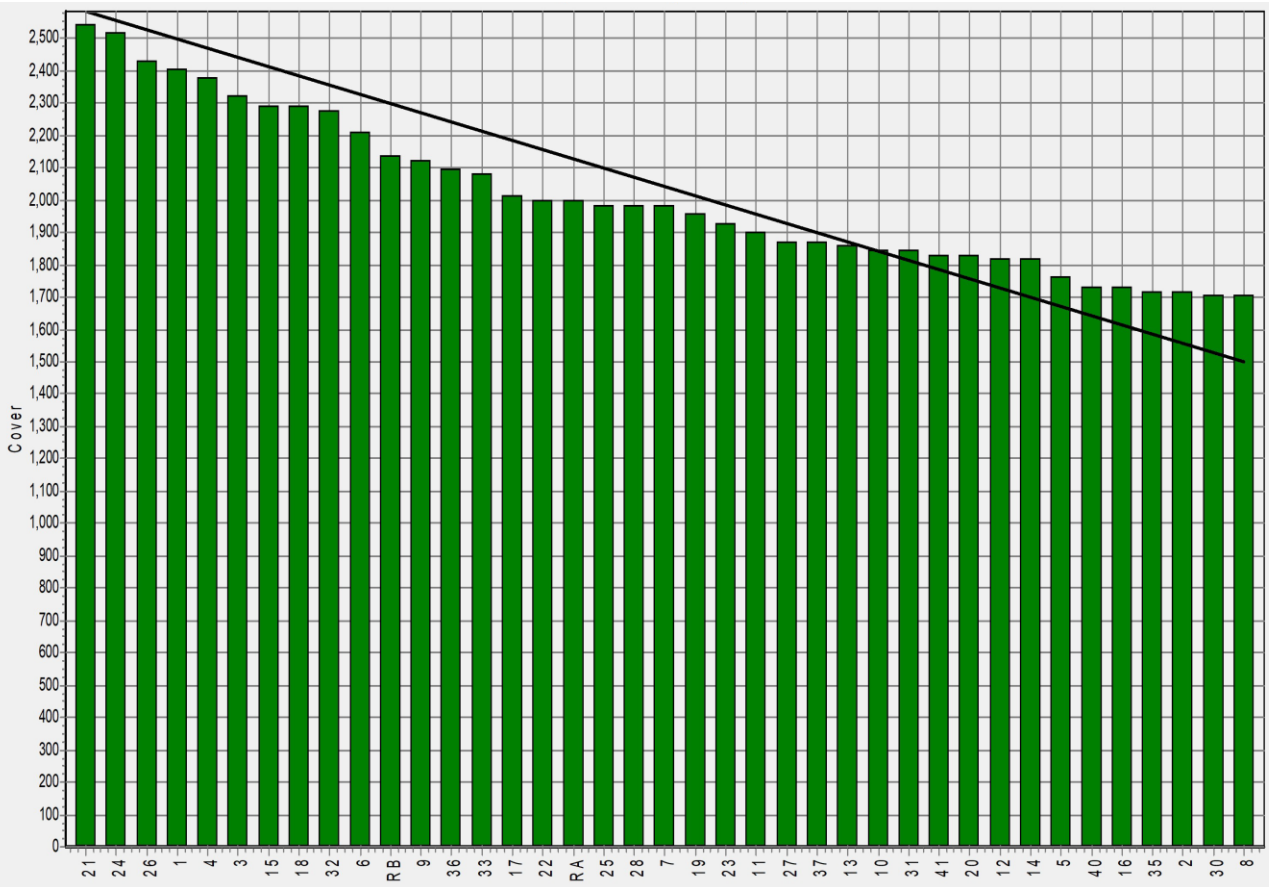
Weekly Pasture Growth Rates



Weekly Soil Temperature



Mawheraiti



Kowhitirangi

