

Westland Monitor Farm Project

Weekly Update as at week ending Wednesday 3 March 2021

CO Comment

This week we have the West Coast Focus Farm Trust field days.

10th March at 10.45am – Anna and Jeremy Hart; Kowhitirangi

11th March at 10.45am – Debbie and Stu Bland; Mawheraiti

We will have updates from our sponsors along with an overview of the monitor farms season.

The West Coast Focus Farm Trust in collaboration with Industry partners are beginning to focus on increasing profit, improving water quality, and reducing greenhouse gas (GHG) emissions within a farm systems context.

Sarah Dirks, DairyNZ Step Change Project Lead will be the guest speaker at this year's Monitor Farm field days. Discussing how DairyNZ is responding to these issues with their 'Step Change' project, we will have a look at the numbers associated to the West Coast monitor farms and how to create a baseline on your farm to assess performance. From there you can explore what options there are on farm to take action relating to the climate and environment change required.

Sarah Dirks grew up in Iowa in the United States. Having completed a Bachelor of Science degree at Iowa State University, Sarah immigrated to New Zealand and worked on a farm for 3.5 years. Her background also includes experience as a research technician and technical sales.

For the last ten years Sarah has worked for DairyNZ and has recently become the project lead for 'Step Change' assisting in preparing farmers to reduce their environmental footprint.

Come along and interact with a guest speaker that has advanced farm systems knowledge who wants to support farmers through the on-farm change process.

The West Coast Focus Farm Trust is supported by Westland Milk Products, DairyNZ, CRV and Ravensdown.

Lunch at the field days is kindly supplied by Silver Fern Farms.

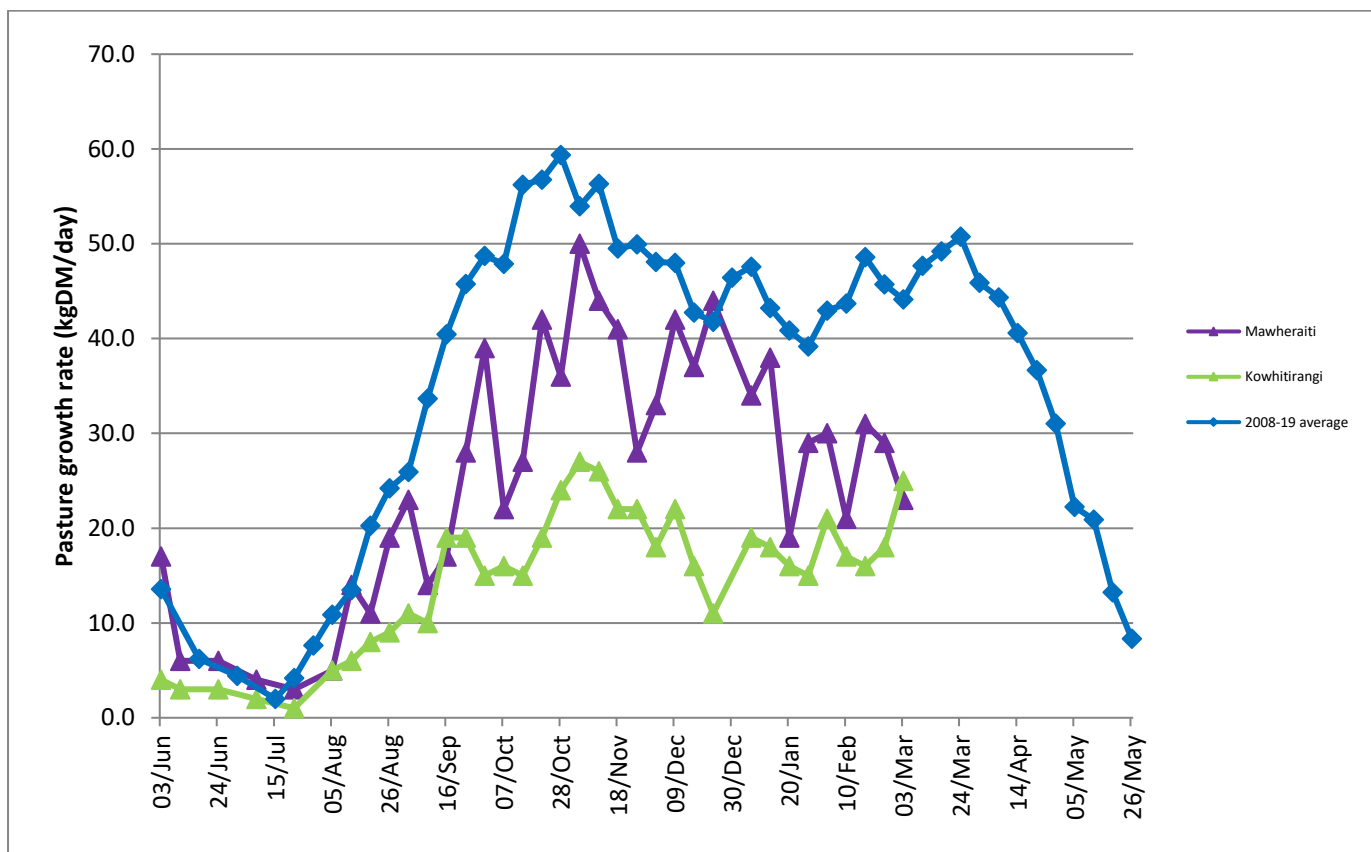
Hope to see you all there!

Farm Summary

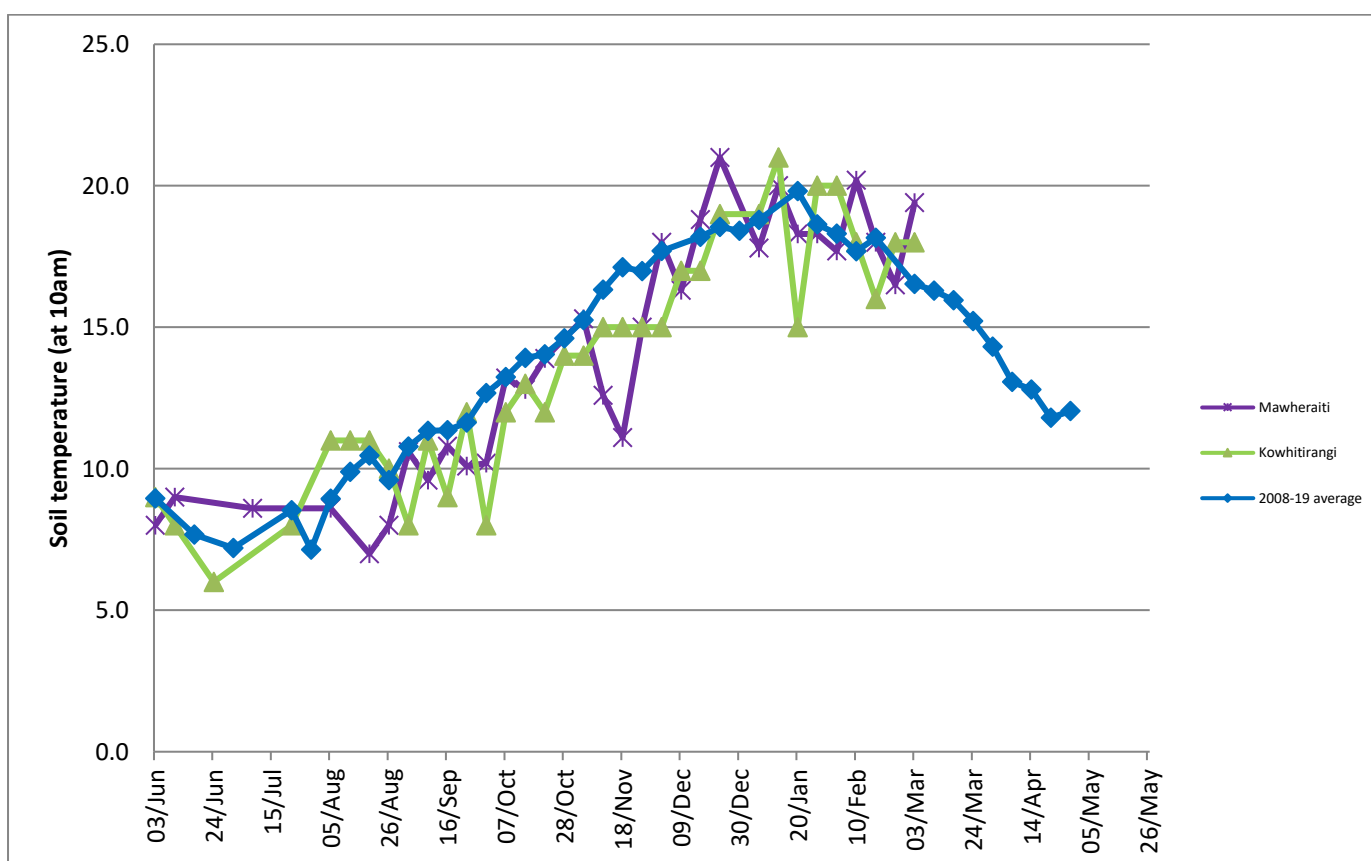
	Mawheraiti	Kowhitirangi
Average cover (kg DM/ha)	1984	2000
APC (24 February)	1989	1953
Rotation length (days)	26	29
Stocking rate	2.3	2.3
Percentage in milk	100%	100%
Milksolids kg/cow	1.62	1.41
Milksolids kg/ha	3.7	3.3
MS/cow (season to date)	346	327
MS/ha (season to date)	815	705
N (kg/ha) year to date	195	185
Current N application rate kg N/ha	22	9
	1 Feb	10 Feb
DM%	20.0	16.0
Pasture ME	12.3	12.5
Pasture NDF	41.7	40.8
Pasture CP	22.3	20.6
Target Intake (kg DM/cow/d)	18	18
Supplement (kg/cow/day)	0	2.4
Soil temperature (°C)	19.4	18
Growth Rate (kg DM/day)	23	25
Rainfall	10	56
Conditions for farmwalk	Heavy rain	Pouring rain
Notes:	Both farms looking good. Blands' loving the rain. Irrigation off for now. Jeremy and Stu still flat-out renewing grass everywhere	Jeremy's farm has been loving the dry. Absolutely no irrigation there.

NB: pasture quality data are for 1 sample collected from each farm.

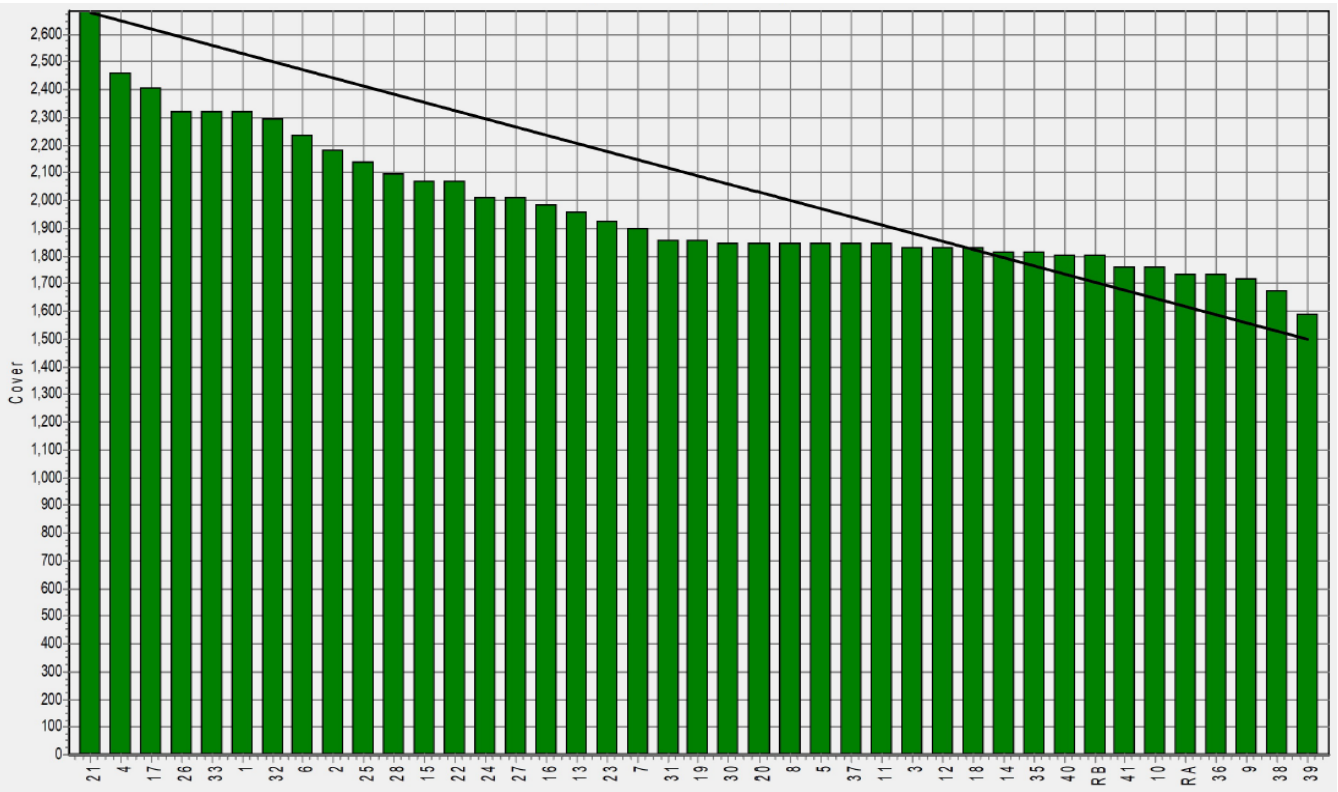
Weekly Pasture Growth Rates



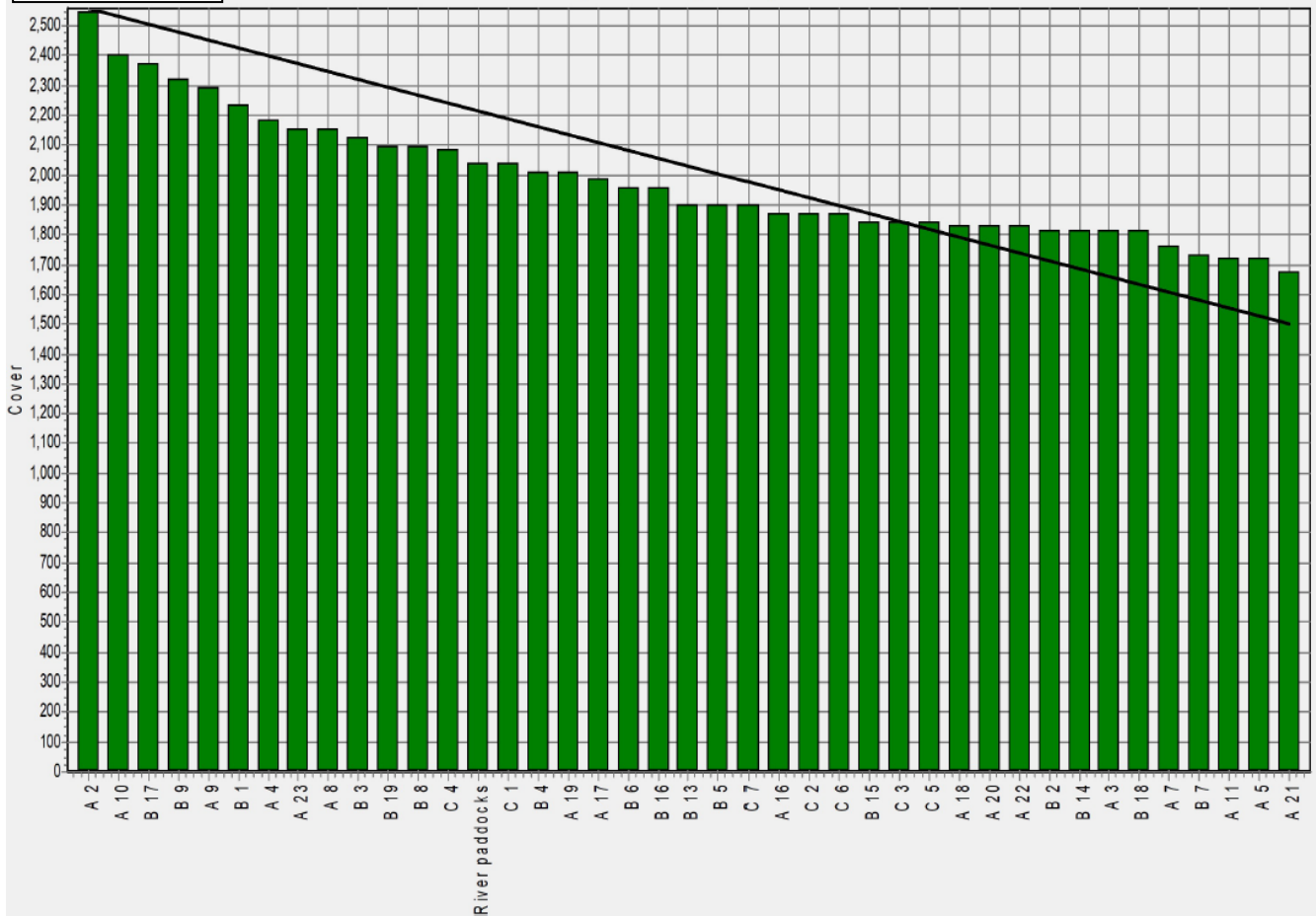
Weekly Soil Temperature



Mawheraiti



Kowhitirangi



Kowhitirangi

Description	Date	RPM	% DM	% Prot	% Lipid	% ADF	% NDF	Sol Sugar	OMD %	MJME /kg
Paddock 17b	10/6/20	10.8	13.6	28.3	3.8	17.4	33.6	14.0	88.3	12.9
Paddock 13b	7/7/20	8.0	11.8	29.4	4.1	21.7	44.6	10.0	84.6	12.3
Paddock 3c	5/8/20	10.2	11.7	30.9	4.3	23.5	45.9	7.1	81.3	11.9
Paddock 4a	2/9/20	11.8	17.3	25.8	4.2	21.5	42.3	12.0	>85	>12.7
Paddock 1	14/10/20	9.7	12.9	31.7	4.0	23.9	49.0	6.8	83.2	12.1
Paddock 19b	4/11/20	11.8	10.9	27.6	3.6	27.4	54.0	3.9	78.3	11.4
Paddock 11a	2/12/20	11.4	15.4	26.7	3.3	24.2	42.0	7.9	82.2	12.0
Paddock 16a	13/1/21	15.7	16.0	18.8	3.3	28.0	49.2	9.9	76.9	11.2
Paddock 9b	10/2/21	15.7	16.0	20.6	3.4	22.6	40.8	12.7	>85	12.5

* Test analytes which have occurred as outliers on the NIRS calibration are indicated by * and should be treated as an approximation only.