

Westland Monitor Farm Project

Weekly Update as at week ending Wednesday 30 September 2020

CO Comment

Last week DairyNZ collaborated with Beef and Lamb NZ to bring two seminars to the West Coast. Both events at Fox Glacier and Greymouth were well attended and great cross sector discussions had.

This week DairyNZ has collaborated with Westpac to bring Sir John Kirwan (JK) to the West Coast. There will be two discussion group events, one on farm in Westport, the other in Whataroa. There will also be an event in Greymouth which is open to the community also.

JK will share his experience with depression while doing what he loved. He understands balancing work with mental health – while scoring tries and becoming a rugby legend, he was battling depression.

At the upcoming events he will share his personal journey with depression and the tools he uses to stay well.

JK says he is really looking forward to getting out and talking to people on the West Coast.

“It’s a privilege to be able to travel the country discussing my personal journey, but more importantly to hear about other people’s journeys, learn more about what they’re going through, and hopefully offer advice that they’ll be able to carry forward in their own lives.”

These events provide an opportunity to get off the farm, catch-up with local farmers, and discuss topical issues. We are lucky to have Sir John Kirwan attend and openly share his wellbeing experiences. Many farmers will connect with his story, which could help navigate some of the challenges we face.

Even as essential businesses during COVID-19, we are still faced with a challenging environment, finances, weather, and regulations. Farmer wellbeing is an important conversation to have, checking-in on how we are feeling, and maintaining mental health in the same way we do with our physical health.

The discussion groups are being held on Keoghan’s Farm in Westport on October 7 and at the Whataroa Community Hall on October 8. The community event is being held in Greymouth on October 7.

Food and refreshments will be supplied, with thanks to West Coast Rural Support Trust.

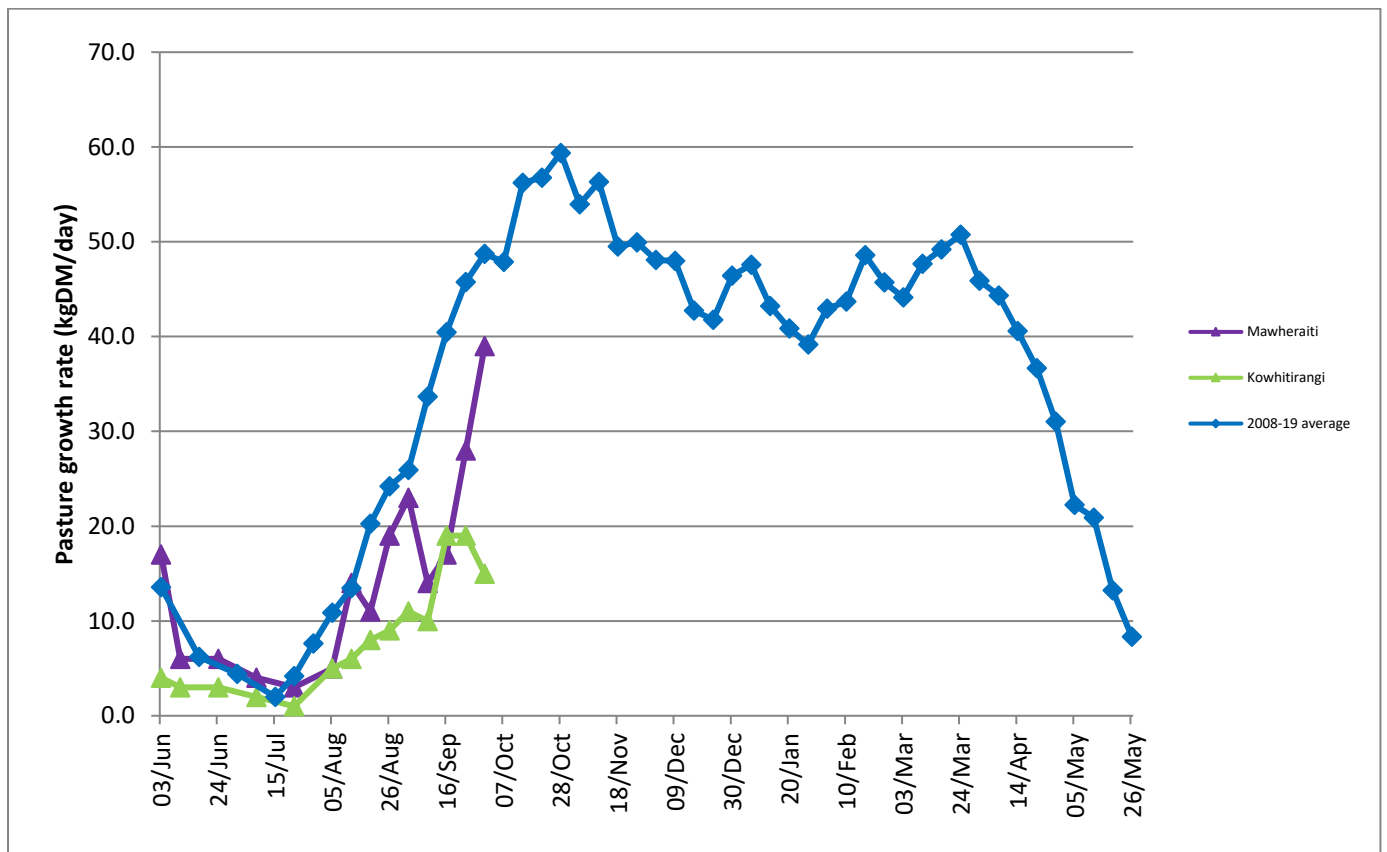
Find out more at www.dairynz.co.nz/events.

Farm Summary

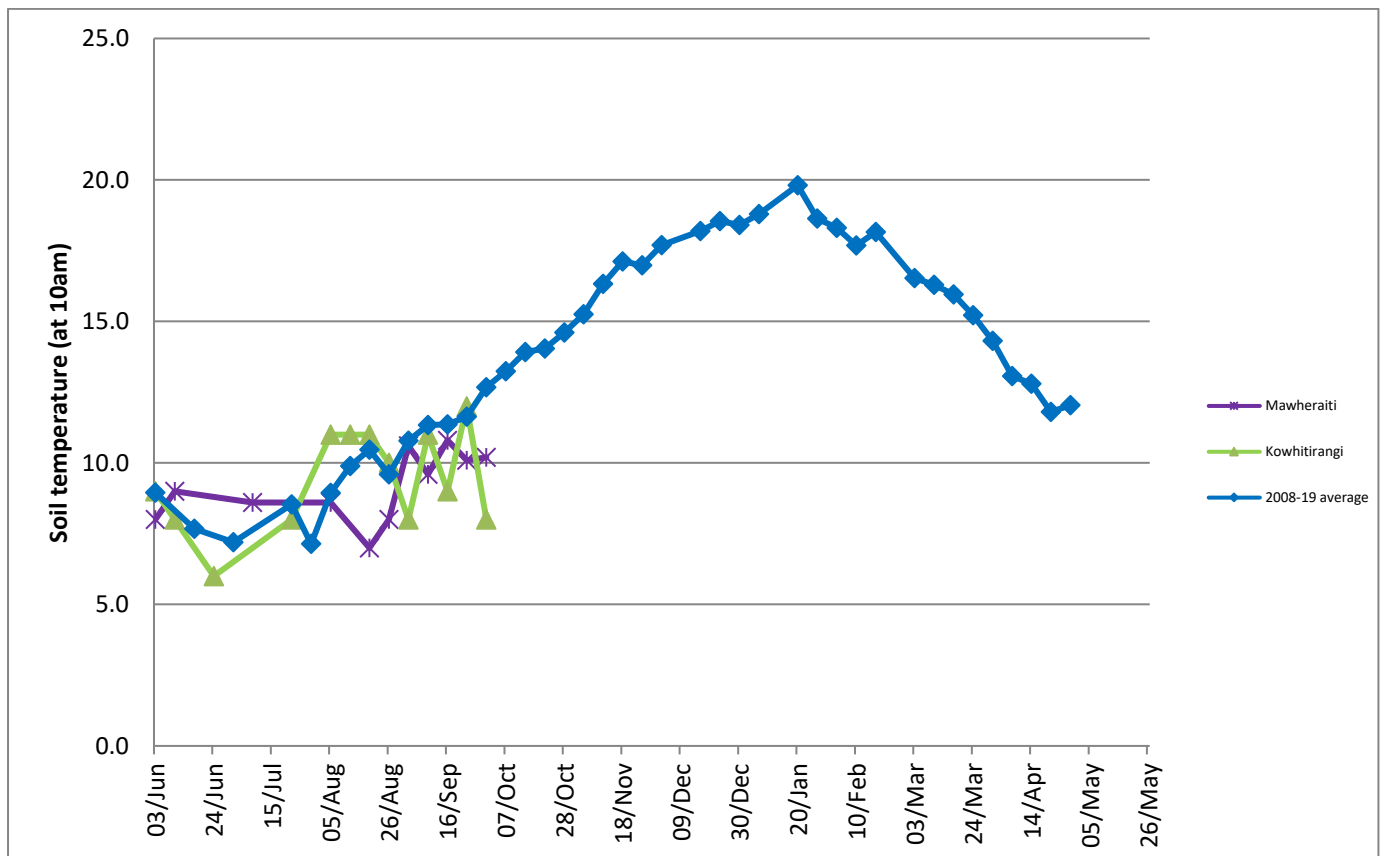
	Mawheraiti	Kowhitirangi
Average cover (kg DM/ha)	2242	1961
APC (23 September)	2244	1962
Rotation length (days)	35	24
Stocking rate	2.1	2.1
Percentage in milk	92%	96%
Milksolids kg/cow	2.03	1.81
Milksolids kg/ha	4.2	3.7
MS/cow (season to date)	56	59
MS/ha (season to date)	141	132
N (kg/ha) year to date	56	31
Current N application rate kg N/ha	30	
	31 Aug	2 Sept
DM%	15	17.3
Pasture ME	12.1	>12.7
Pasture NDF	44.9	42.3
Pasture CP	29.6	25.8
Target Intake (kg DM/cow/d)	18	18
Supplement (kg/cow/day)	0	6.0
Soil temperature (°C)	10.2	8.0
Growth Rate (kg DM/day)	39	15
Rainfall	75	110
Conditions for farmwalk	Shocking day, driving rain, sleet, wind, bitterly cold	Fine but very cold

NB: pasture quality data are for 1 sample collected from each farm

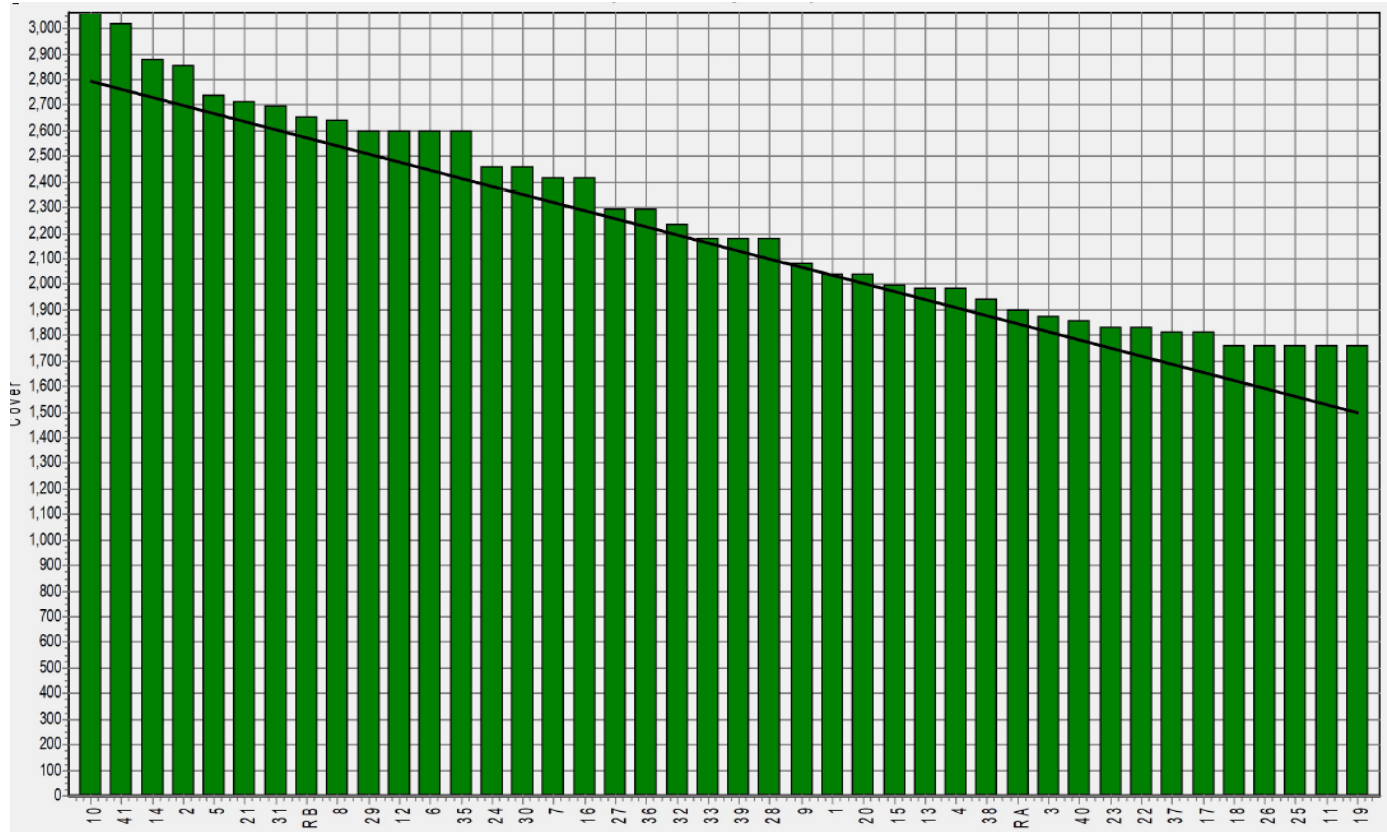
Weekly Pasture Growth Rates



Weekly Soil Temperature



Mawheraiti



Kowhitirangi

