

Westland Monitor Farm Project

Weekly Update as at week ending Wednesday 4 November 2020

CO Comment

Farmlands AgFest West Coast is happening on 13-14 November 2020 and is an event that recognizes the importance of the agricultural sector on the West Coast.

The purpose of the event is to give people in the rural sector the opportunity to showcase their business, to celebrate the agricultural industry and its significance to all businesses on and around the Coast.

Drop in at Site 357 and visit DairyNZ. The space is alongside OSPRI, and also Meat the Need. DairyNZ will be asking you what you deem to be of the highest importance for the region. There will be resources available for you too. Come and have a general chat or ask specific questions regarding your farm business.

OSPRI is a partnership between primary industries and the government managing two national programmes – NAIT and TBfree. NAIT provides the national animal identification and traceability system and TBfree aims to eradicate bovine TB from New Zealand.

Meat the Need is a brand new nationally based charity originally designed to supply much needed meat to City Missions and food banks. The Meat is donated by farmers, processed, packed and delivered to those most in need.

For more about the Farmlands Ag Fest: <https://www.agfest.co.nz/>

Tickets to the event can be found here:

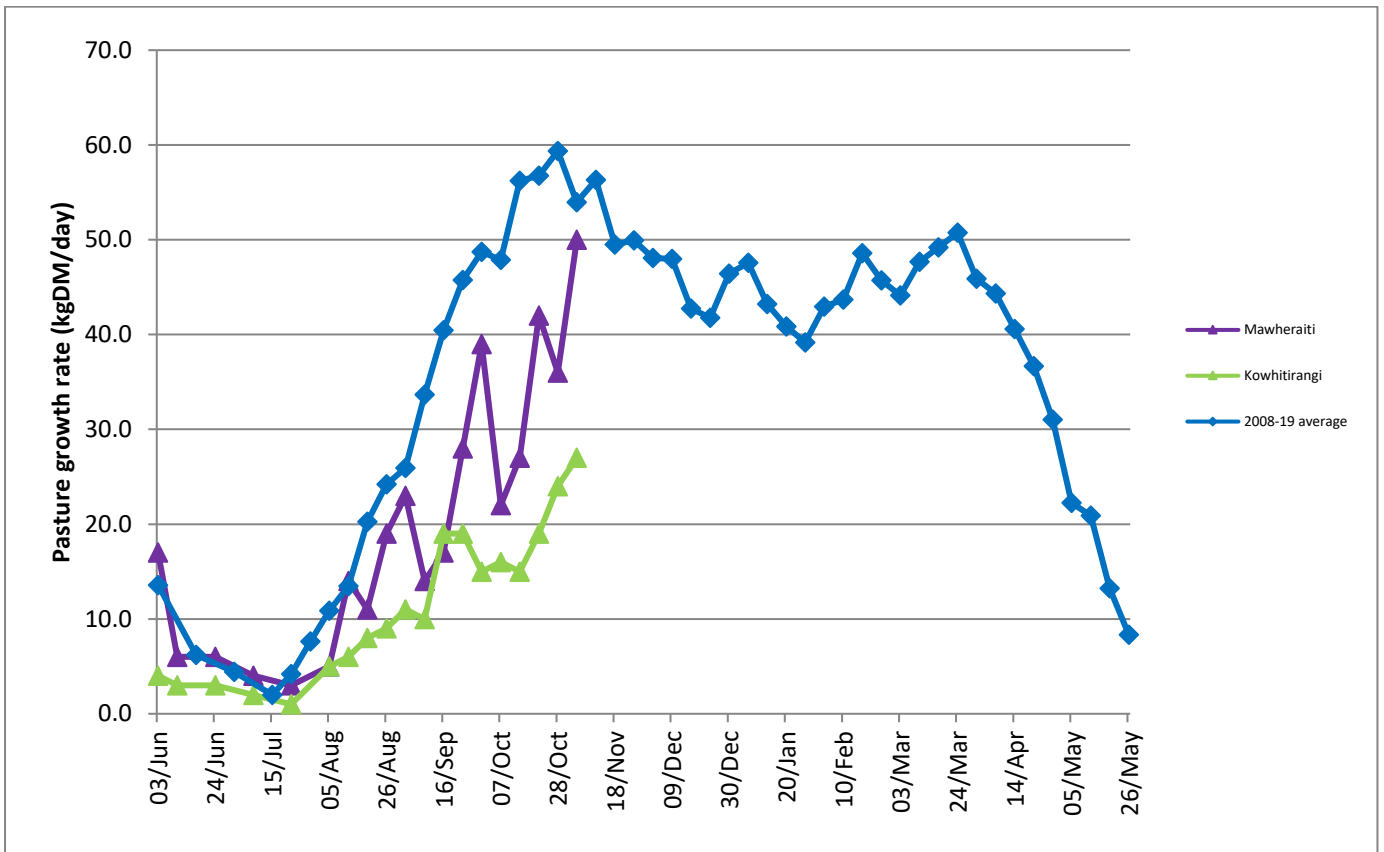
https://nz.patronbase.com/_AgFest/Productions/AF20/Performances

Farm Summary

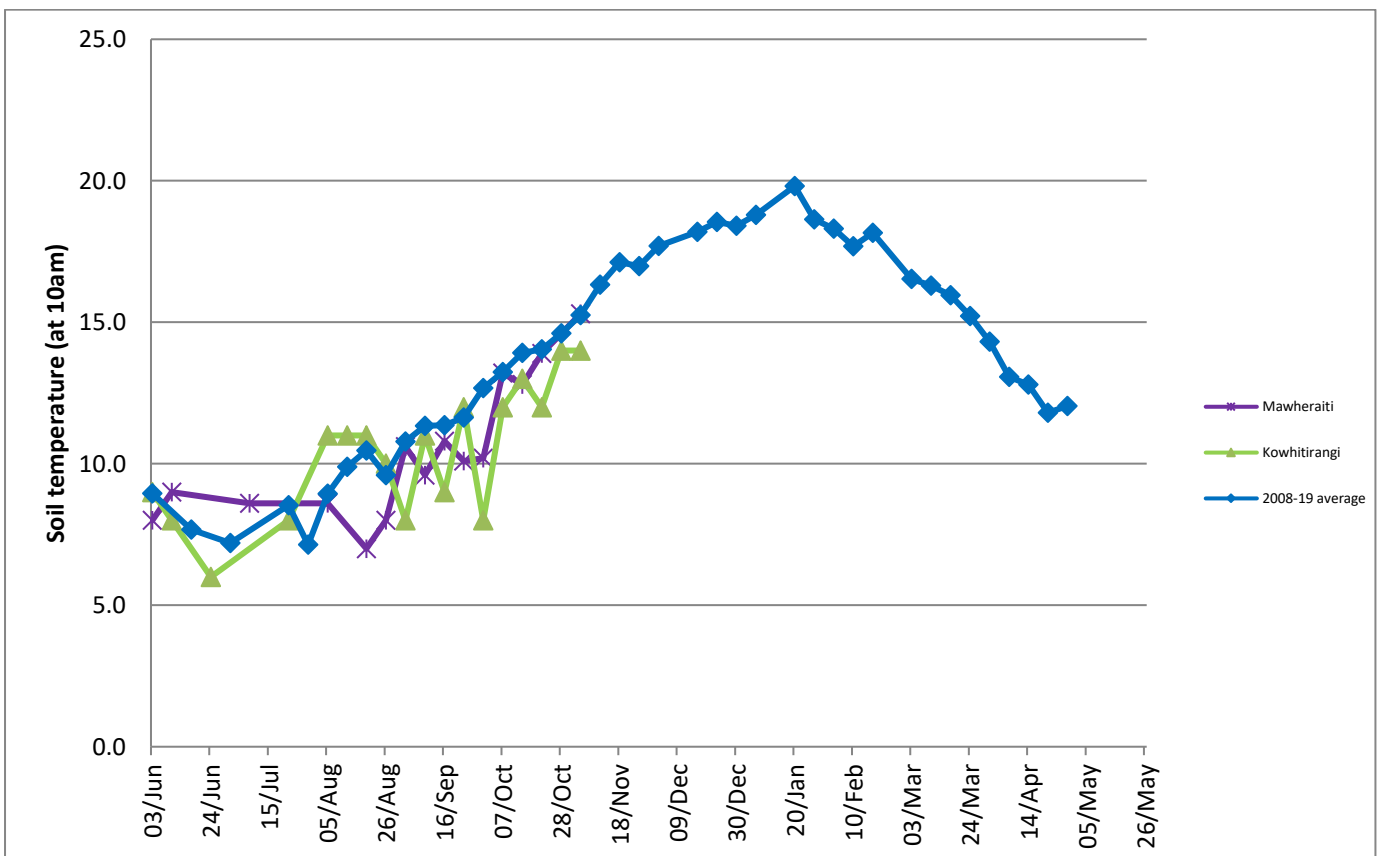
	Mawheraiti	Kowhitirangi
Average cover (kg DM/ha)	2169	2072
APC (28 October)	2069	2020
Rotation length (days)	24	26
Stocking rate	2.3	2.2
Percentage in milk	100%	100%
Milksolids kg/cow	2.19	2.10
Milksolids kg/ha	5.1	4.6
MS/cow (season to date)	124	125
MS/ha (season to date)	314	278
N (kg/ha) year to date	86	70
Current N application rate kg N/ha	22	-
	5 Oct	14 Oct
DM%	14.9	12.9
Pasture ME	11.5	12.1
Pasture NDF	47.0	49.0
Pasture CP	24.7	31.7
Target Intake (kg DM/cow/d)	18	18
Supplement (kg/cow/day)	2.29	2.5
Soil temperature (°C)	15.3	14
Growth Rate (kg DM/day)	50	27
Rainfall	66	170
Conditions for farmwalk	Fine	Pouring rain, warm, farm flooded

NB: pasture quality data are for 1 sample collected from each farm

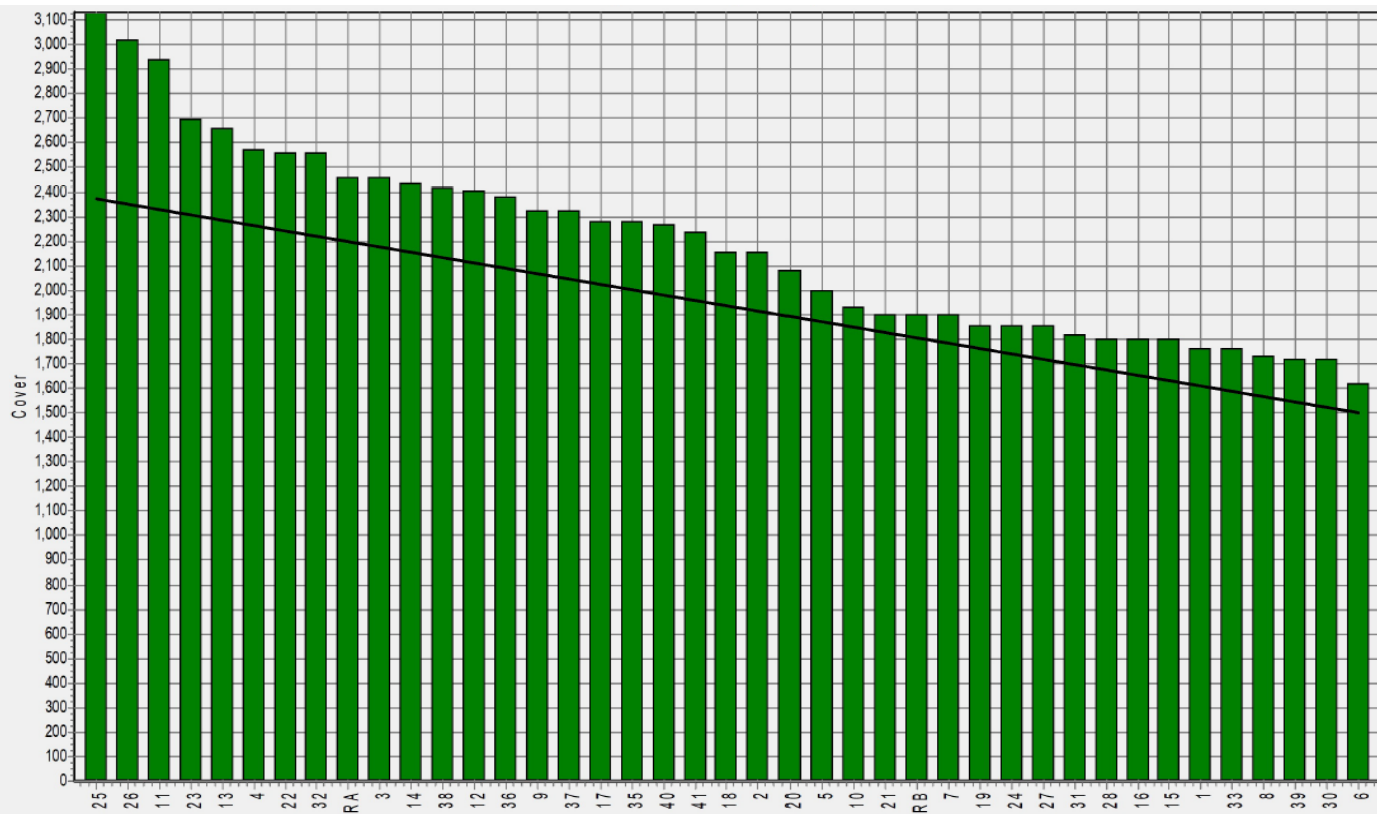
Weekly Pasture Growth Rates



Weekly Soil Temperature



Mawheraiti



Kowhitirangi

