

Westland Monitor Farm Project

Weekly Update as at week ending Wednesday 5th August 2020

CO Comment

The West Coast has had a relatively mild winter and start to calving. With this being said it is still pertinent that we are vigilant with Mastitis detection.

Most cases of environmental mastitis occur within a few weeks of calving, when the cows' natural defence mechanisms are low, and their teats have been in contact with mud and manure during calving.

Exposure of teat ends to environmental bacteria can occur at any time though: before and during calving, at milking time or in paddocks during the lactation or dry periods. During lactation, factors that predispose cows to infection with environmental bacteria include milking udders that are wet or dirty, or administering an intramammary infusion if the teat orifice is not sterile

Remember *Streptococcus uberis* is the most common cause of environmental mastitis in New Zealand. *Streptococcus uberis* usually responds to treatment with bacteriological cure rates of the order of 80% reported.

Severity of clinical signs may vary from slightly abnormal milk to severe swelling of the udder and an elevated temperature. Severity can increase when treatment is delayed.

Strep. uberis infections, if undiagnosed, can contribute significantly to bulk milk contamination.

Reduce exposure to environmental mastitis bacteria by ...

- Calving on clean, dry pasture or a clean, dry calving pad
- Monitor the number of cases of mastitis occurring, especially in recently calved heifers
- Bring cows into the dairy as soon as possible to be checked for mastitis and milked
- Take special care with high risk cows
- Take care with pre-milking preparation of udders

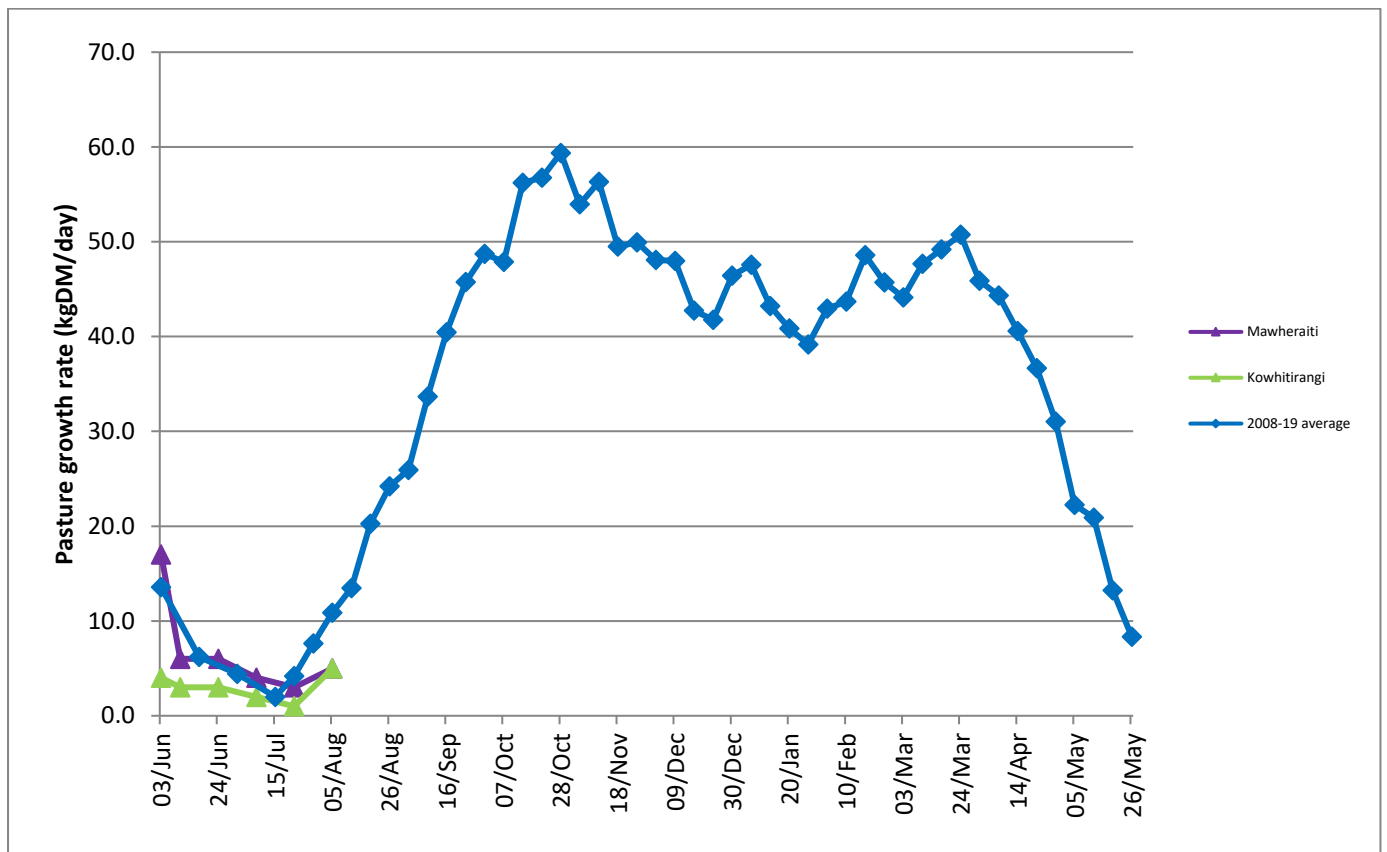
For more info on mastitis management visit <https://www.dairynz.co.nz/animal/cow-health/mastitis/>

Farm Summary

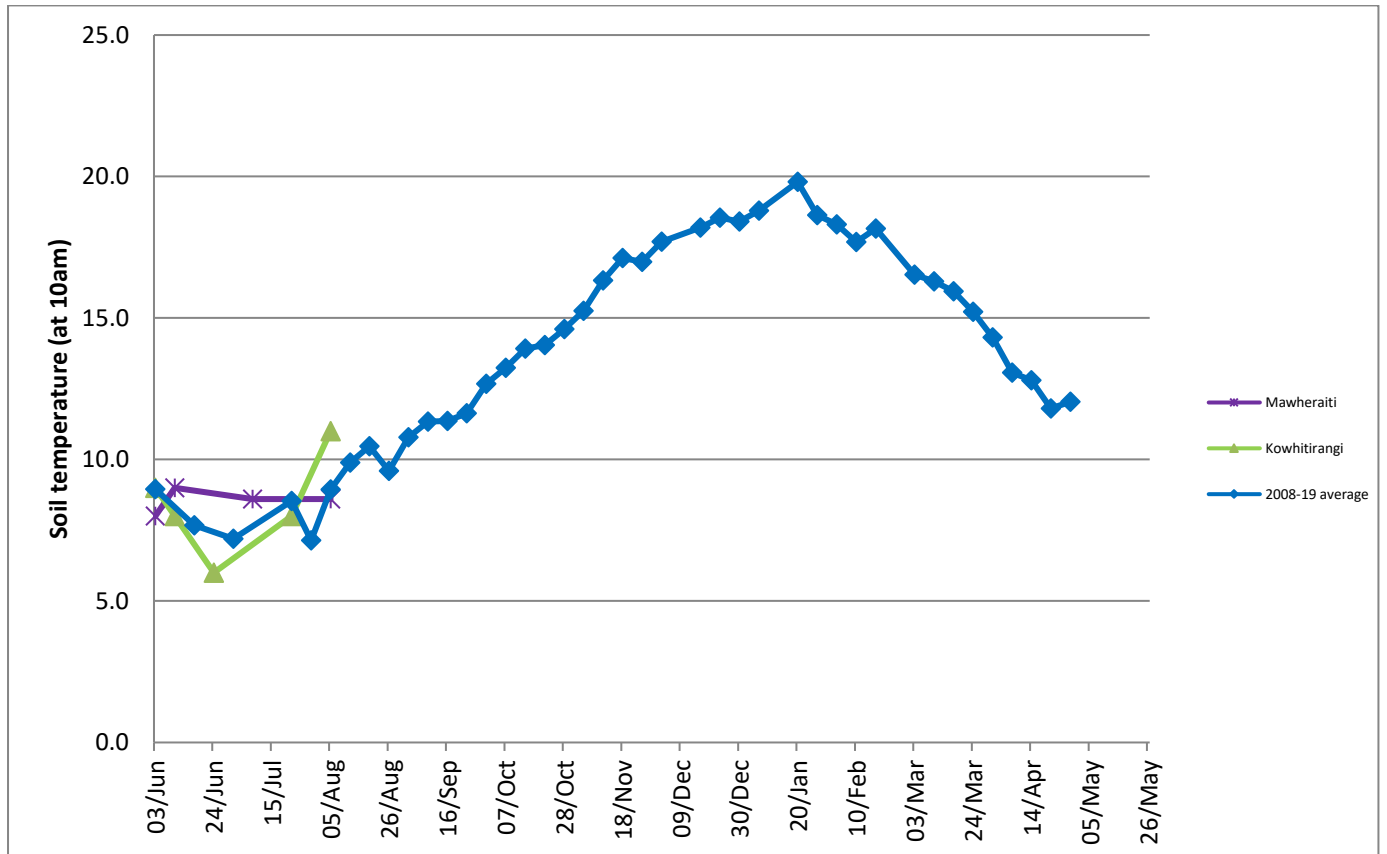
	Mawheraiti	Kowhitirangi
Average cover (kg DM/ha)	2202	1892
APC (22 July)	2157	1856
Rotation length (days)		274
Stocking rate		
Percentage in milk	0	0
Milksolids kg/cow	-	-
Milksolids kg/ha	-	-
MS/cow (season to date)	6	-
MS/ha (season to date)	16	-
N (kg/ha) year to date	25	0
Current N application rate kg N/ha	-	-
	6 Jul	7 Jul
DM%	14.8	11.8
Pasture ME	12.6	12.3
Pasture NDF	37.1	44.6
Pasture CP	24.2	29.4
Target Intake (kg DM/cow/d)	17	
Supplement (kg/cow/day)	12.8	12
Soil temperature (°C)	8.6	11
Growth Rate (kg DM/day)	5	5
Rainfall	10	70
Conditions for farmwalk		Warm, sunny day

NB: pasture quality data are for 1 sample collected from each farm

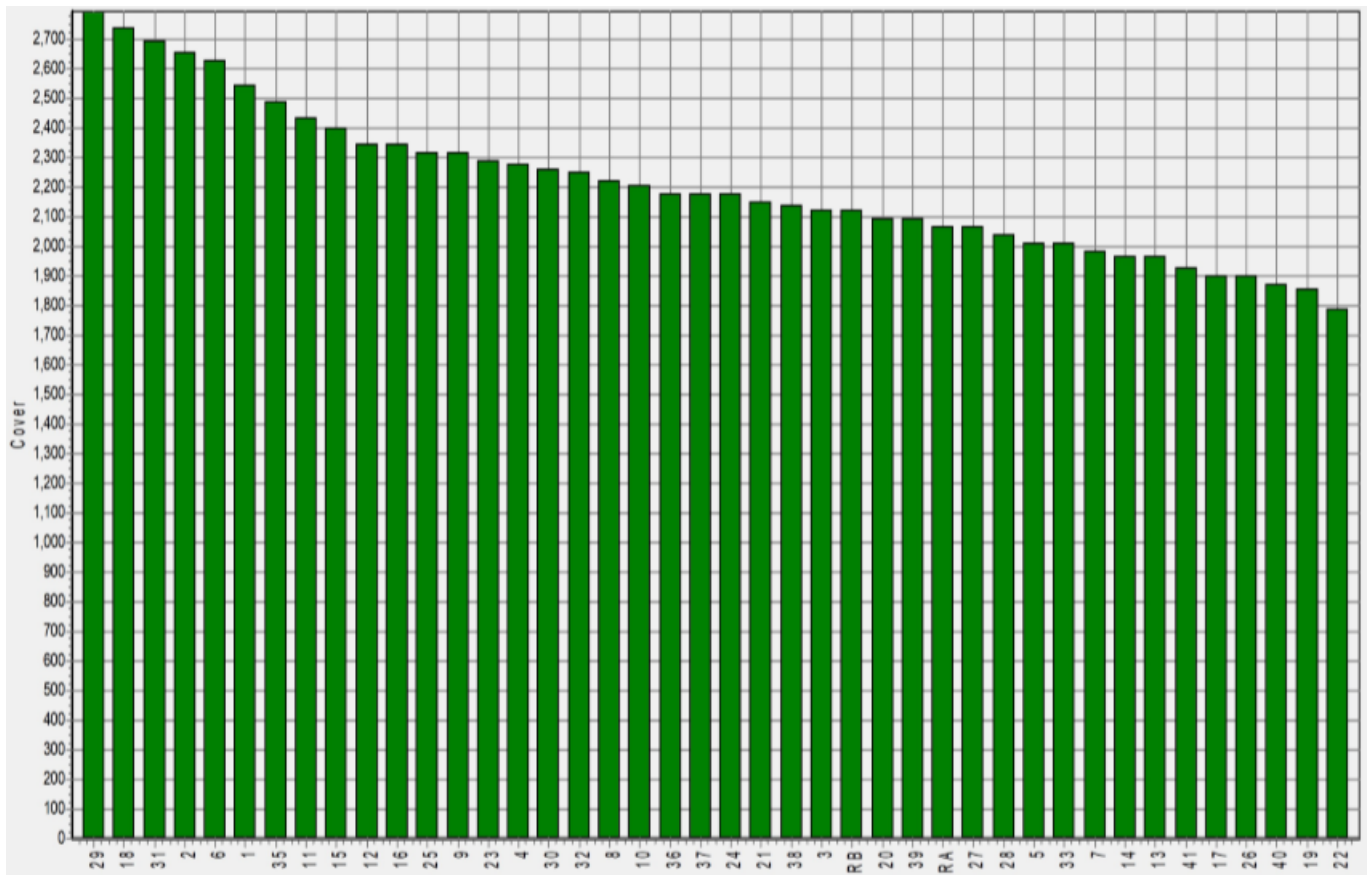
Weekly Pasture Growth Rates



Weekly Soil Temperature



Mawheraiti



Kowhitirangi

