

Westland Monitor Farm Project

Weekly Update as at week ending Wednesday 9 December 2020

CO Comment

With only a few fine, hot days the pastures have accelerated into reproductive mode and keeping control of pasture quality will need to be the prime focus for the coming month. As pasture growth rates increase, the tendency will be for residual grazing height to lift, which will impact on pasture quality in the next grazing round. Maintaining pasture quality by regular pasture monitoring and achieving a consistent and even residual will be critical if current cow production levels are to be maintained. Identify lower performing paddocks, or those that need some other improvement, and consider for renovation now. Dropping them out of the grazing round now will assist in managing the feed surplus.

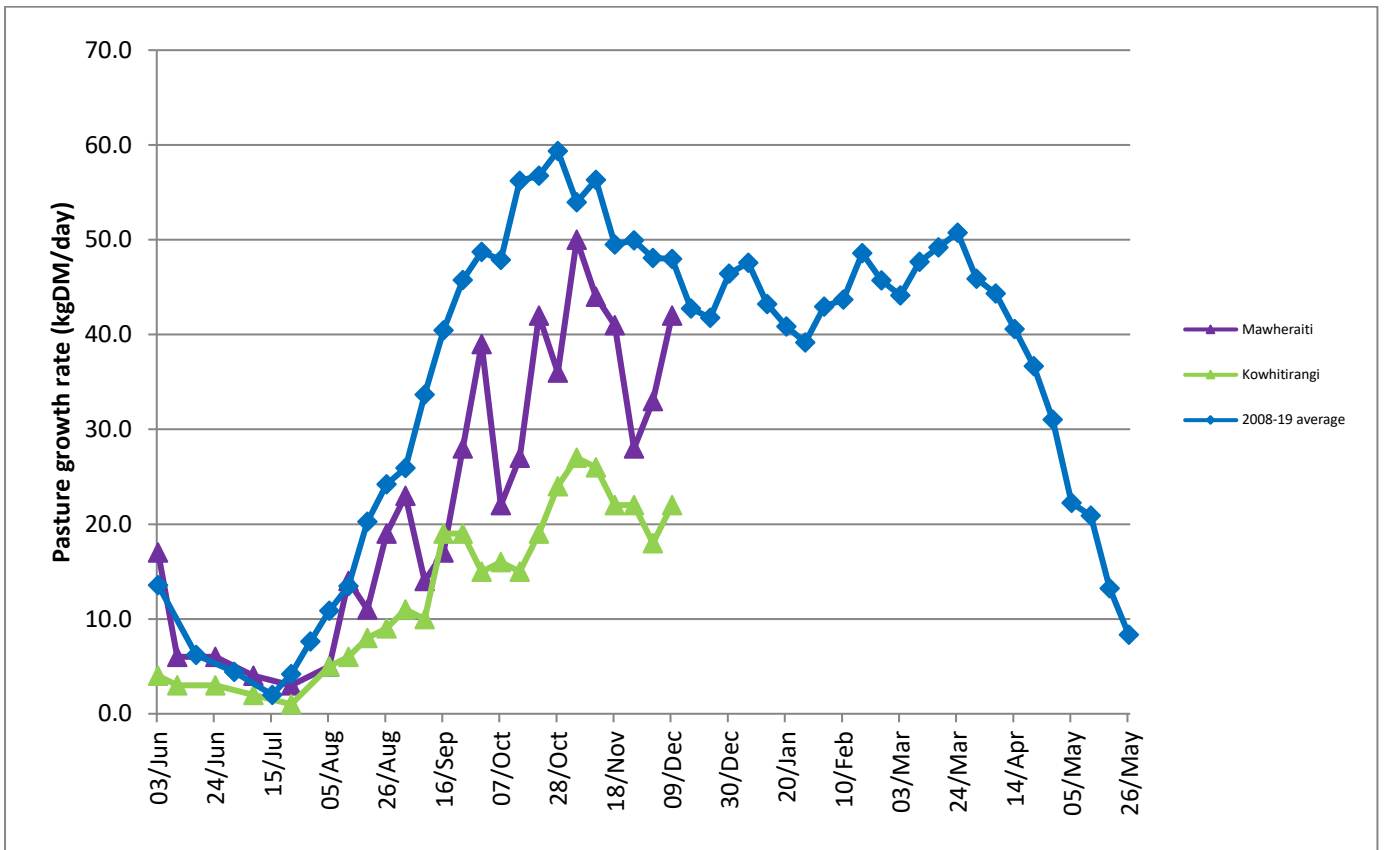
There is not long to go before Christmas. Make sure staff are aware of their rosters and commitments over this period. Now is the time to schedule any last-minute tasks before staff and yourself (hopefully) get a bit of a break. Check on youngstock and make sure they are meeting targets and make sure you have enough supplies on farm to cover the holiday period too. Check on the bulls if they are going to be in the herd over Christmas and it might be a good idea to switch the team on Christmas eve, so it doesn't need to be done when there are fewer people around.

Farm Summary

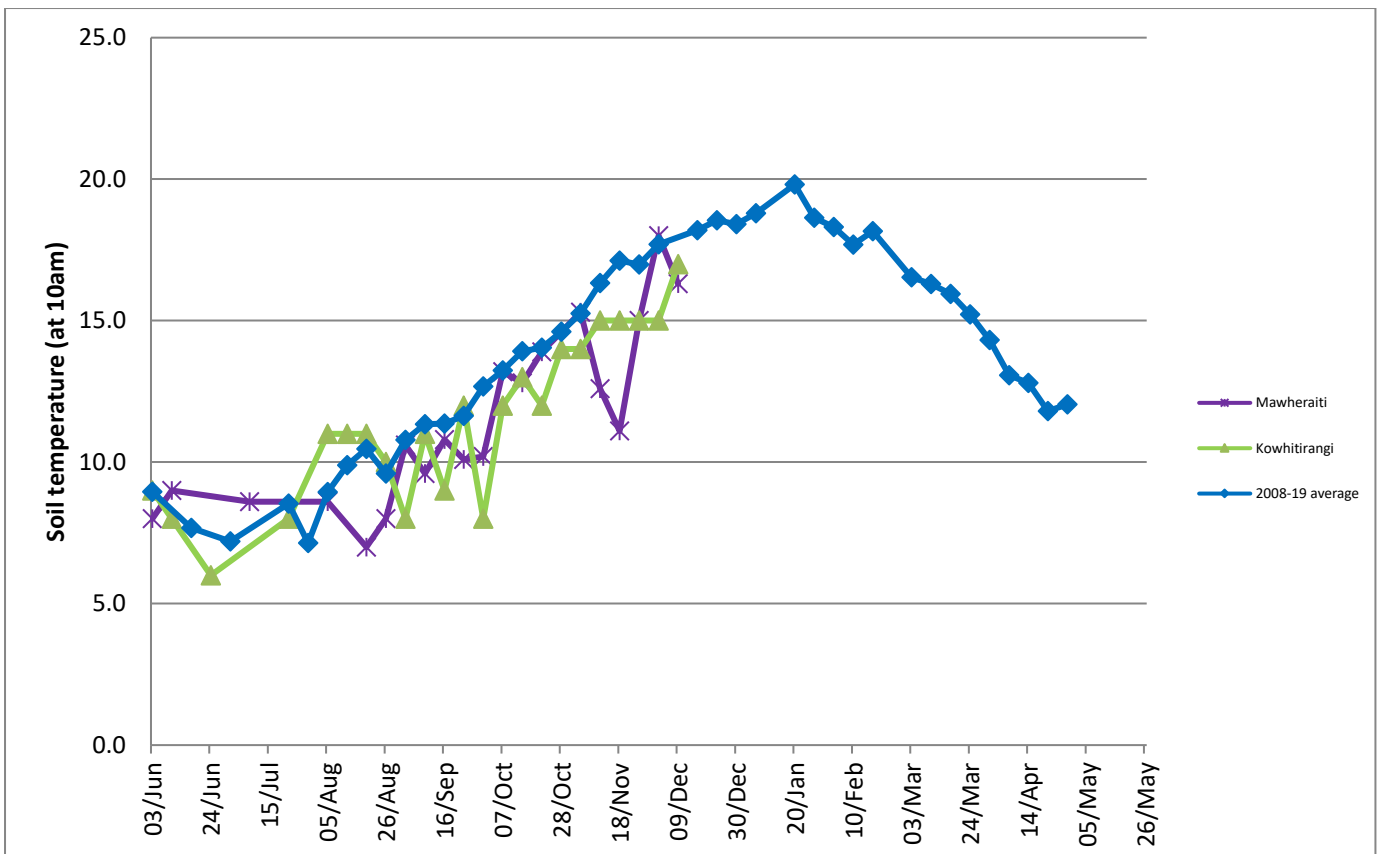
	Mawheraiti	Kowhitirangi
Average cover (kg DM/ha)	2119	1947
APC (2 December)	2006	1943
Rotation length (days)	25	28
Stocking rate	2.3	2.3
Percentage in milk	100%	100%
Milksolids kg/cow	2.00	1.69
Milksolids kg/ha	4.7	3.8
MS/cow (season to date)	189	186
MS/ha (season to date)	479	413
N (kg/ha) year to date	119	130
Current N application rate kg N/ha	22	20
	30 Nov	2 Dec
DM%	16.3	15.4
Pasture ME	11.9	12.0
Pasture NDF	44.5	42.0
Pasture CP	19.3	26.7
Target Intake (kg DM/cow/d)	18	18
Supplement (kg/cow/day)	3.0	2.8
Soil temperature (°C)	16.3	17
Growth Rate (kg DM/day)	42	22
Rainfall	40	92
Conditions for farmwalk	Showers	Fine, warm

NB: pasture quality data are for 1 sample collected from each farm

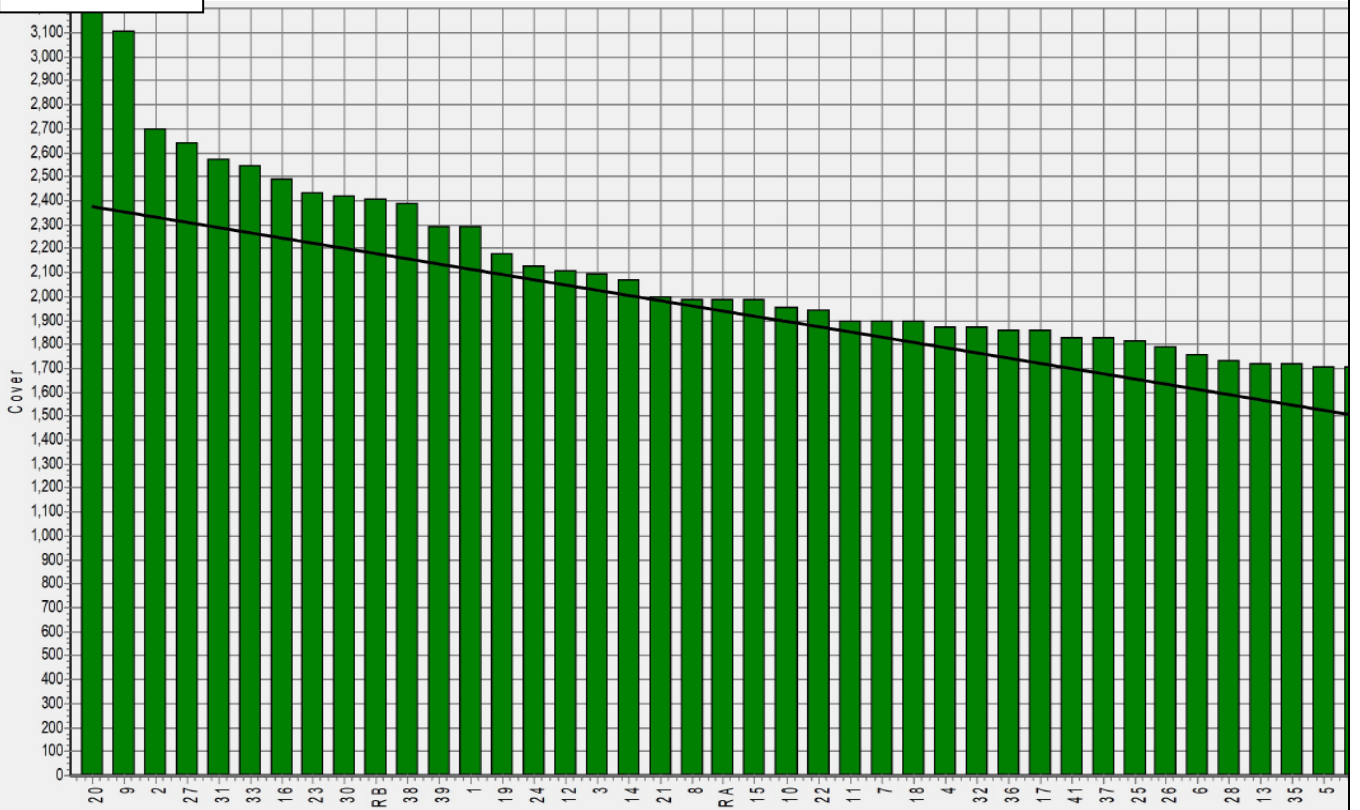
Weekly Pasture Growth Rates



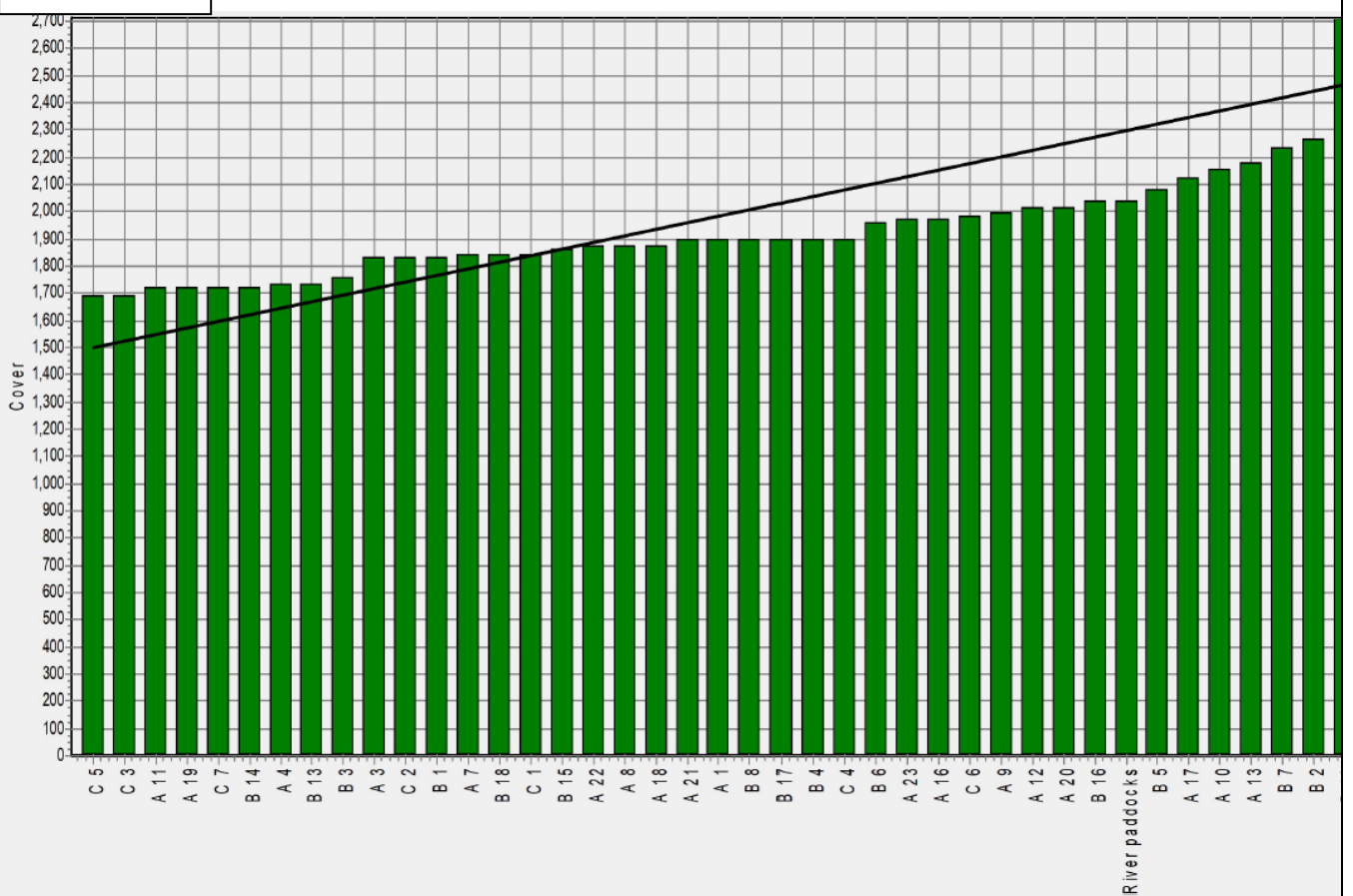
Weekly Soil Temperature



Mawheraiti



Kowhitirangi



Kowhitirangi

Description	Date	RPM	% DM	% Prot	% Lipid	% ADF	% NDF	Sol Sugar	OMD %	MJME /kg
Paddock 17b	10/6/20	10.8	13.6	28.3	3.8	17.4	33.6	14.0	88.3	12.9
Paddock 13b	7/7/20	8.0	11.8	29.4	4.1	21.7	44.6	10.0	84.6	12.3
Paddock 3c	5/8/20	10.2	11.7	30.9	4.3	23.5	45.9	7.1	81.3	11.9
Paddock 4a	2/9/20	11.8	17.3	25.8	4.2	21.5	42.3	12.0	>85	>12.7
Paddock 1	14/10/20	9.7	12.9	31.7	4.0	23.9	49.0	6.8	83.2	12.1
Paddock 19b	4/11/20	11.8	10.9	27.6	3.6	27.4	54.0	3.9	78.3	11.4
Paddock 11a	2/12/20	11.4	15.4	26.7	3.3	24.2	42.0	7.9	82.2	12.0

* Test analytes which have occurred as outliers on the NIRS calibration are indicated by * and should be treated as an approximation only.