

Westland Monitor Farm Project

Weekly Update as at week ending Wednesday 1st September 2021.

CO Comment

Lovely to see some fine weather on the West Coast last week. It has seemed to have perked everything up a bit.

The Mawheraiti monitor farm agreed in their comments that with the fine weather, utilization was much better in their herd. They have started feeding some maize to their milking cows because they do not have enough dry cows left to get through it. Production is sitting at around 1.86 kg/ms/cow.

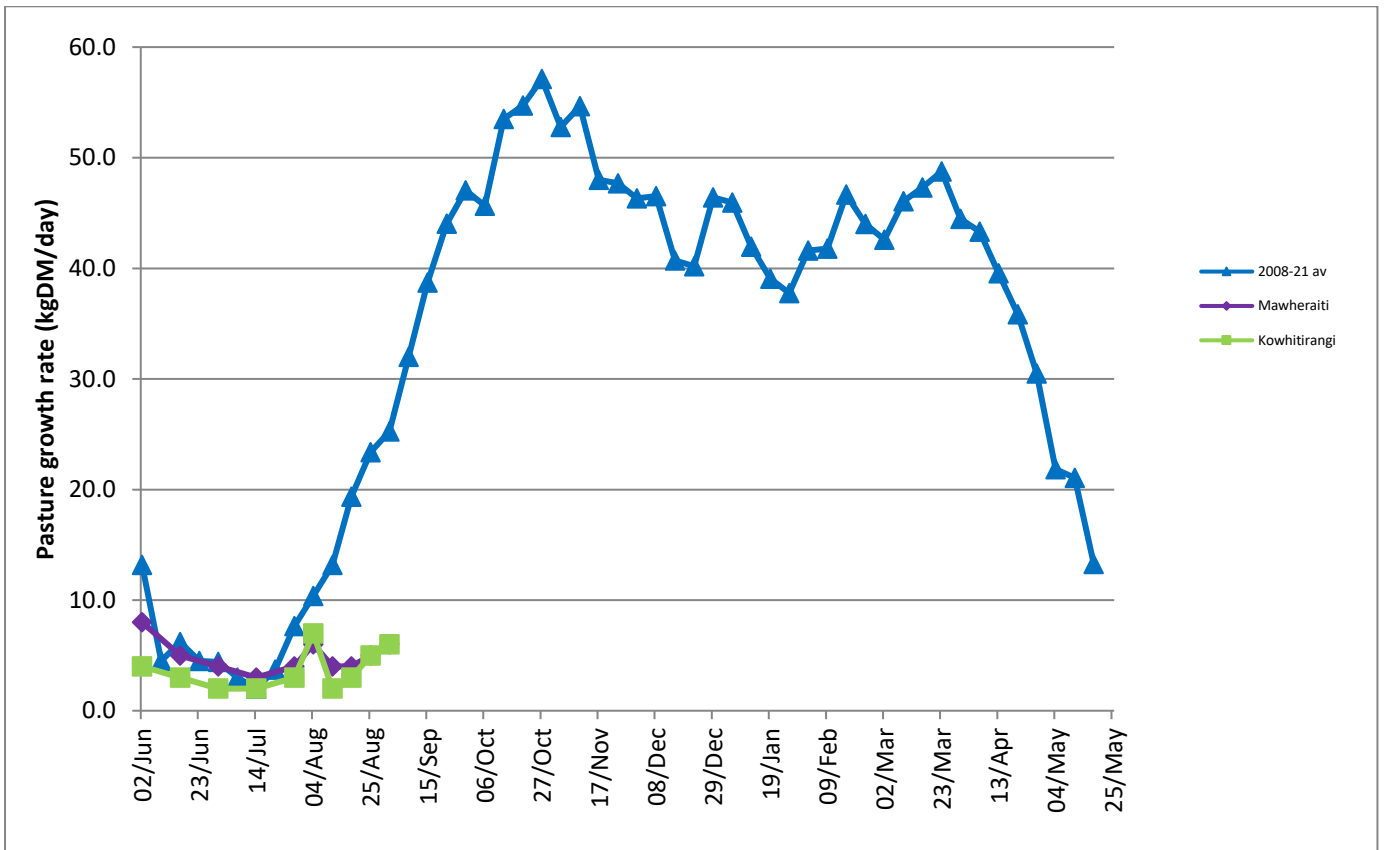
The Kowhitirangi monitor farm finished the last of their crop and silage last week and the cows are now on a diet of grass and PKE. Their springers are getting the same. As most of you know, the Kowhitirangi monitor farm utilizes a 3 and 2 milking system which this season they started on the 27th of August. As at 30 August their cows were doing 1.68kg/ms/cow. They have also capitalized on some fine weather to apply 80kg of Ammo to 100Ha of the farm.

Farm Summary

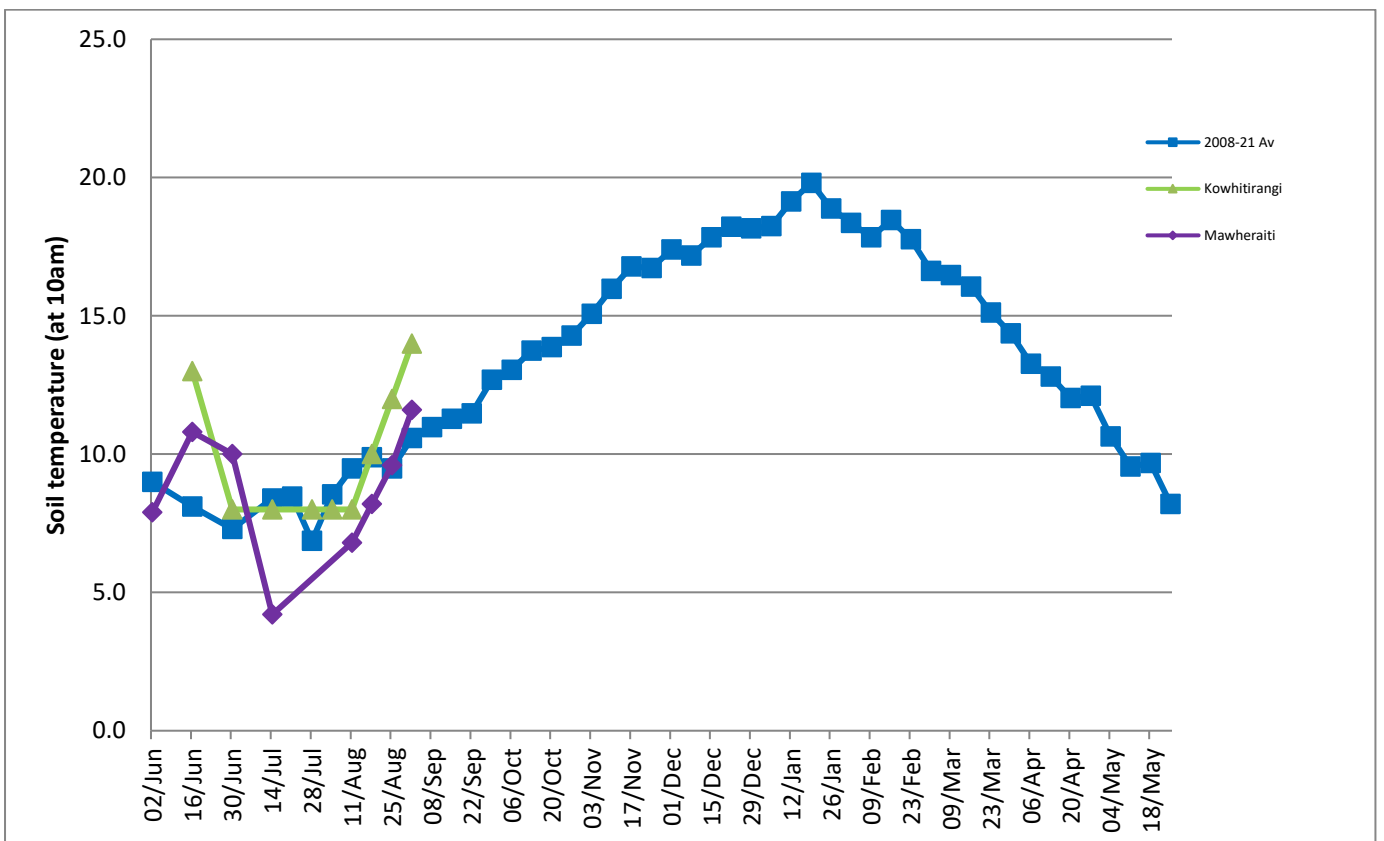
	Mawheraiti	Kowhitirangi
Average cover (kg DM/ha)	1964	1872
APC (25 August)	2090	1907
Rotation length (days)	60	39
Stocking rate		
Percentage in milk	73% calved	65% calved
Milksolids kg/cow	1.86	1.68
Milksolids kg/ha	2.8	2.0
MS/cow (season to date)	16	11
MS/ha (season to date)	39	32
N (kg/ha) year to date		16.8
Current N application rate kg N/ha		24.8
	2 August	4 August
DM%	13.1	15.9
Pasture ME	12.0	12.1
Pasture NDF	44.4	44.8
Pasture CP	25.2	31.6
Target Intake (kg DM/cow/d)	18	18
Supplement (kg/cow/day)	Mob 1 – 6.9	3.5
Soil temperature (°C)	11.6	14.0
Growth Rate (kg DM/day)	6	6
Rainfall	20	70
Conditions for farmwalk	Fine day	Lovely, sunny day
Notes:	<p>1 cow with phosphorus deficiency.</p> <p>Wet start to week, fine end, cows happier in fine, utilisation much better.</p> <p>Started feeding milkers a bit of maize as pit going off due to low dry cow numbers.</p>	<p>Still in lockdown.</p> <p>Went 3 and 2 milking 27th August.</p> <p>Dry cows finished last of crop</p> <p>Have put 80kg Ammo on 100 ha.</p> <p>Not worrying about fixing crop paddocks until it is dry. Too cold to put in before October.</p> <p>Crop all utilised, Silage all used.</p> <p>Calving cows on grass and PKE.</p> <p>Feeding PKE to springers.</p> <p>80 Replacements & 6 bull calves so far.</p> <p>Weather has been amazing and drying out</p>

NB: pasture quality data are for 1 sample collected from each farm.

Weekly Pasture Growth Rates



Weekly Soil Temperature



Mawheraiti



Kowhitirangi

