

Westland Monitor Farm Project

Weekly Update as at week ending Wednesday 13th October 2021.

CO Comment

It has been a prolonged wet period to say the least. Last week we have seen some sunshine which has surely boosted cover for some. Hopefully the weather is on the turn! If you have damaged some paddocks with repeated grazing in wet conditions, some remedial action may be required. If you think regrassing is the way to go with the worst affected paddocks, think about the impacts of taking them out of rotation. Taking too many out could put you on too quick of a rotation through summer whilst they come into production.

Assess the damage and options. For example, direct drilling badly pugged paddocks with an annual ryegrass to provide feed in the short term and look at full pasture renewal in autumn or put into a summer crop and then back into permanent pasture. Severely pugged paddocks may require some drainage work. Make sure culverts and drains are clear so that water can get away if it wants to and if the paddock is still wet some form of subsoiling/ripping may be an option. Waterlogged soils don't tend to produce much grass regardless of the amount of fert you put on.

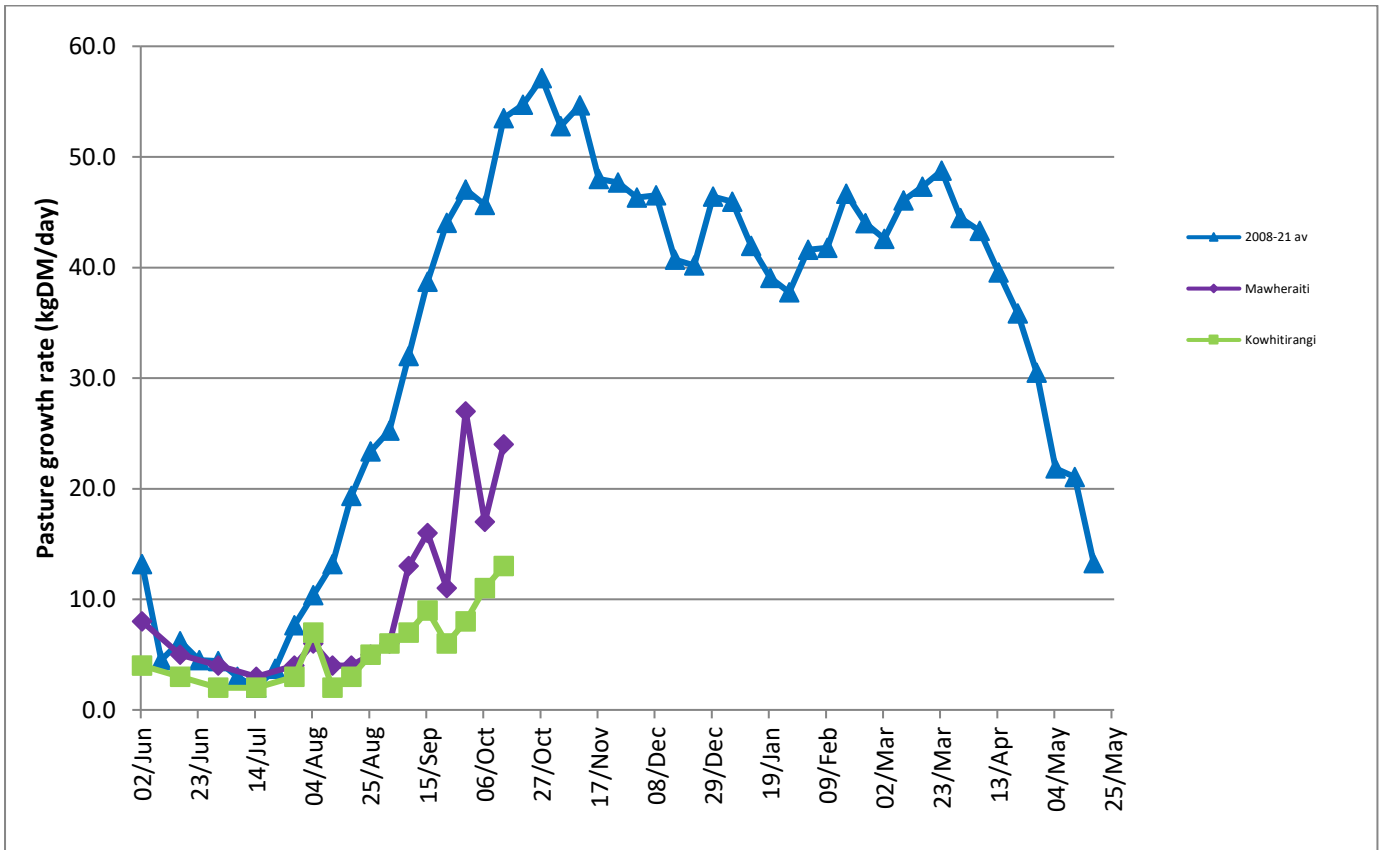
The Mawheraiti monitor farm has noticed that they are having to feed their cows more on the wet days. This will keep the girl's content and reduce walking around the paddock which increases pugging risk. The Kowhitirangi monitor farm is flying fert on to reduce damage to soils from driving the tractor around. There are lots of things we can do to mitigate damage to soils and rectify any problems that have compounded with the wet weather. It's not a bad place when it's raining but when the sun is out, there's no better place to be than the West Coast!

Farm Summary

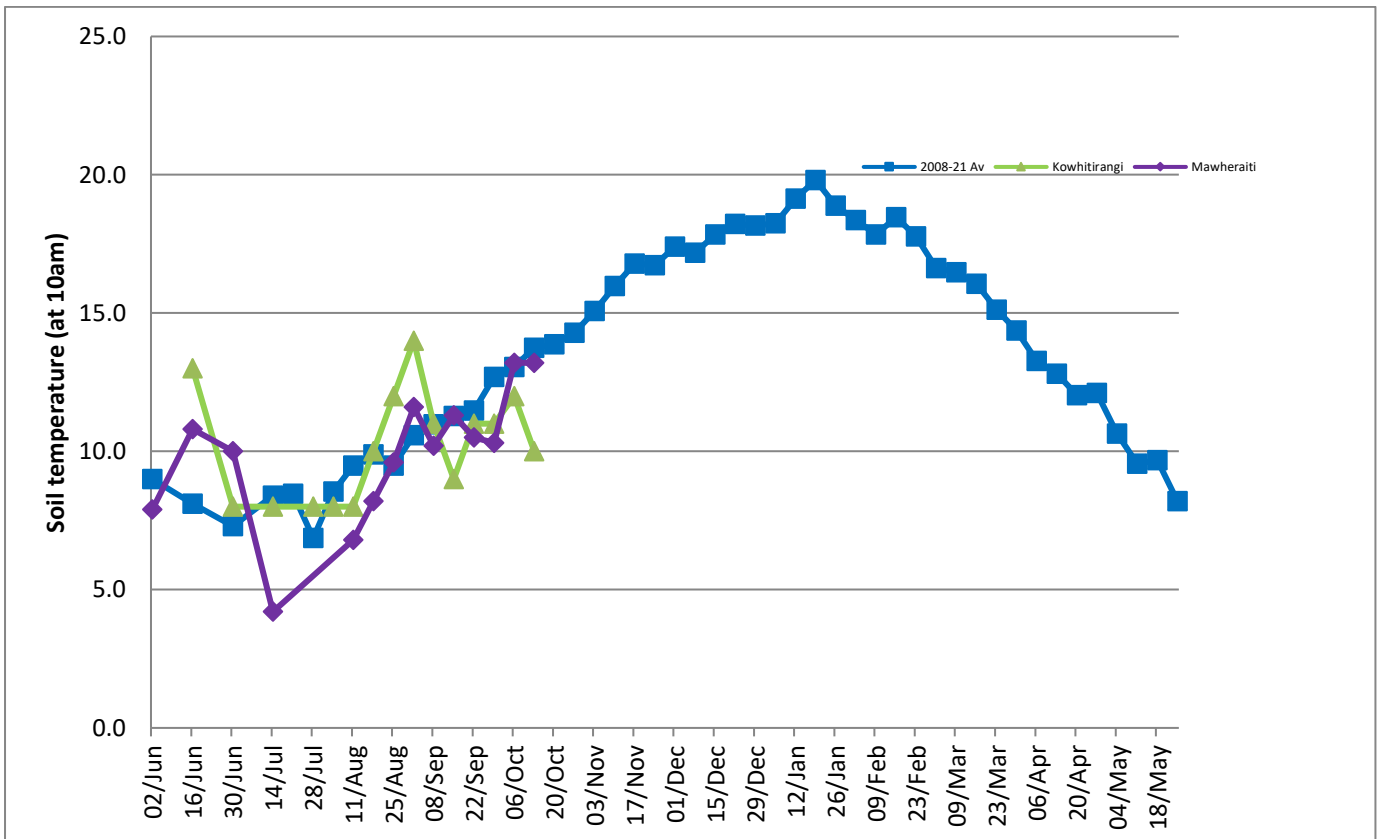
	Mawheraiti	Kowhitirangi
Average cover (kg DM/ha)	1953	1830
APC (6 October)	1940	1807
Rotation length (days)	25	23
Stocking rate	2.5	2.0
Percentage in milk	100%	99% calved
Milksolids kg/cow	2.0	2.0
Milksolids kg/ha	4.9	3.5
MS/cow (season to date)	88	76
MS/ha (season to date)	217	149
N (kg/ha) year to date	16	36
Current N application rate kg N/ha	18	24
	4 October	6 October
DM%	13.2	10.7
Pasture ME	11.2	11.4
Pasture NDF	49.4	51.5
Pasture CP	18.7	22.5
Target Intake (kg DM/cow/d)	18	18
Supplement (kg/cow/day)	1.5	3.5
Soil temperature (°C)	13.2	10.0
Growth Rate (kg DM/day)	24	13
Rainfall	25	170
Conditions for farmwalk	Fine day	Fine day
Notes:	<p>Calving finished. Still needing to feed out a lot more on wet days than fine. Grass looking like coming. Planning to have run-off silage off and maize pdks started this week if weather plays ball.</p>	<p>Still very wet and soil temp has dropped. 4 cows to calve. Changed milking times to 5am, 5pm & 11am. Applying fertiliser with the helicopter this week 100kg/ ha Urea, Ammo,K over 114ha of the wetter part of farm, tractor over the rest Tidying up new farm with digger. Firewood.</p>

NB: pasture quality data are for 1 sample collected from each farm.

Weekly Pasture Growth Rates



Weekly Soil Temperature



Mawheraiti



Kowhitirangi

