

Westland Monitor Farm Project

Weekly Update as at week ending Wednesday 15th September 2021.

CO Comment

Wet weather has seen our monitor farms make some changes and add some work to their to-do lists last week. The changes were mostly to protect their pasture from damage to ensure its performance is not impacted into the season.

The Mawheraiti monitor farm was impacted from the Buller flooding in July and because of the damage to stop banks during that event, it has made them susceptible to subsequent heavy rainfall. As a result, this past week has seen them have water across some paddocks and left them with more fences to clean and re-establish.

The Kowhiterangi monitor farm split their herd into two on the 8th of September to help mitigate pasture damage that would have been caused had they kept the herd in one mob.

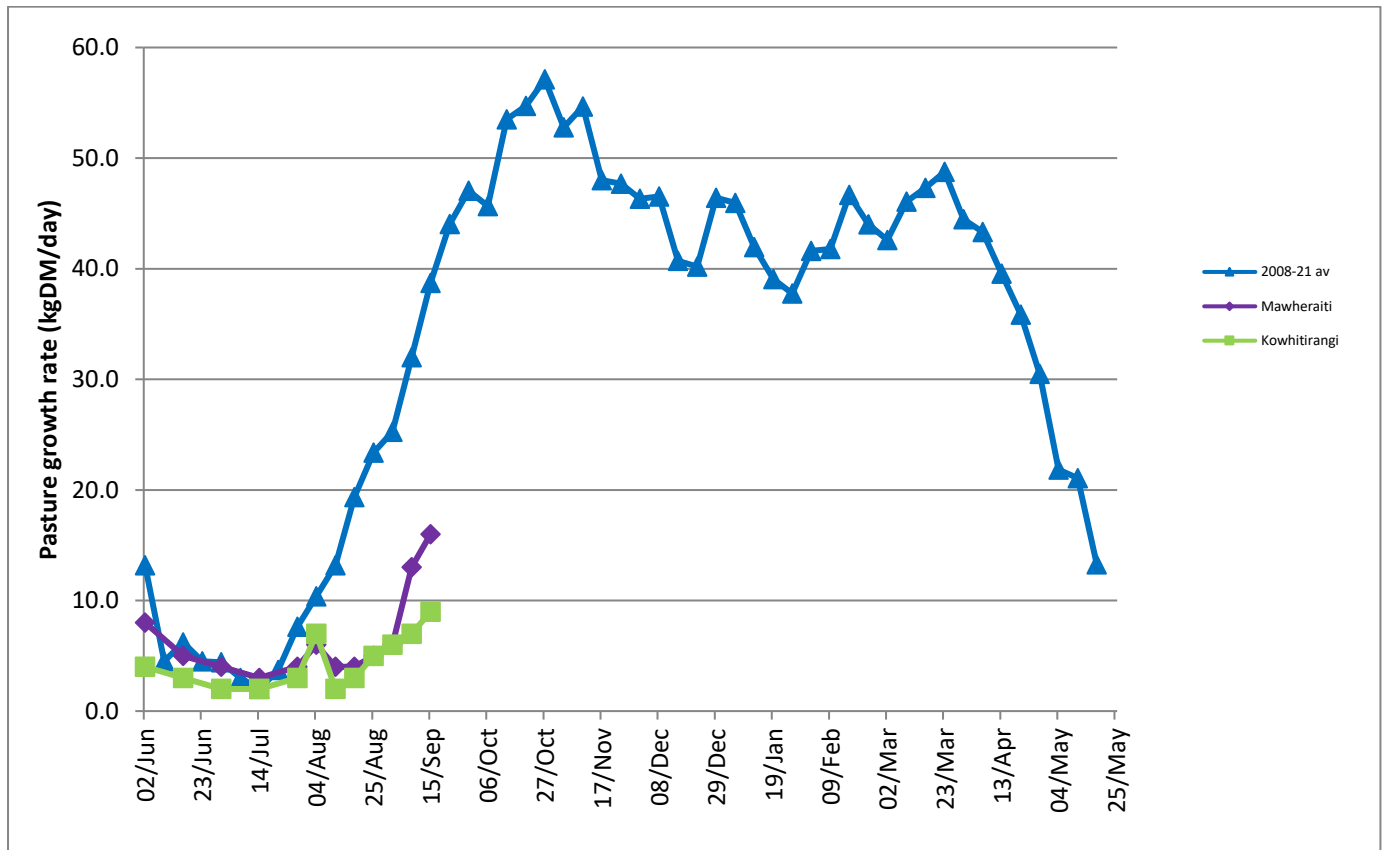
Pugging will lower pasture growth rates for the next 3-4 months at least. Zero pugging is always the target. If very wet, stock will need to be on off grazed (this includes milkers). Milkers can eat their daily allocation in two grazing's of 4 hours each. Walk the herd out of different gates if possible. Where possible start grazing at the back of the paddock and walk stock in and out of paddocks on long grass to prevent damage. A trial in Taranaki demonstrated that on off grazing reduced pasture production by 2% versus the 24-hour grazing which reduced pasture production by 17%. With a bit of luck, the weather will turn to allow farmers more flexibility within their rotation.

Farm Summary

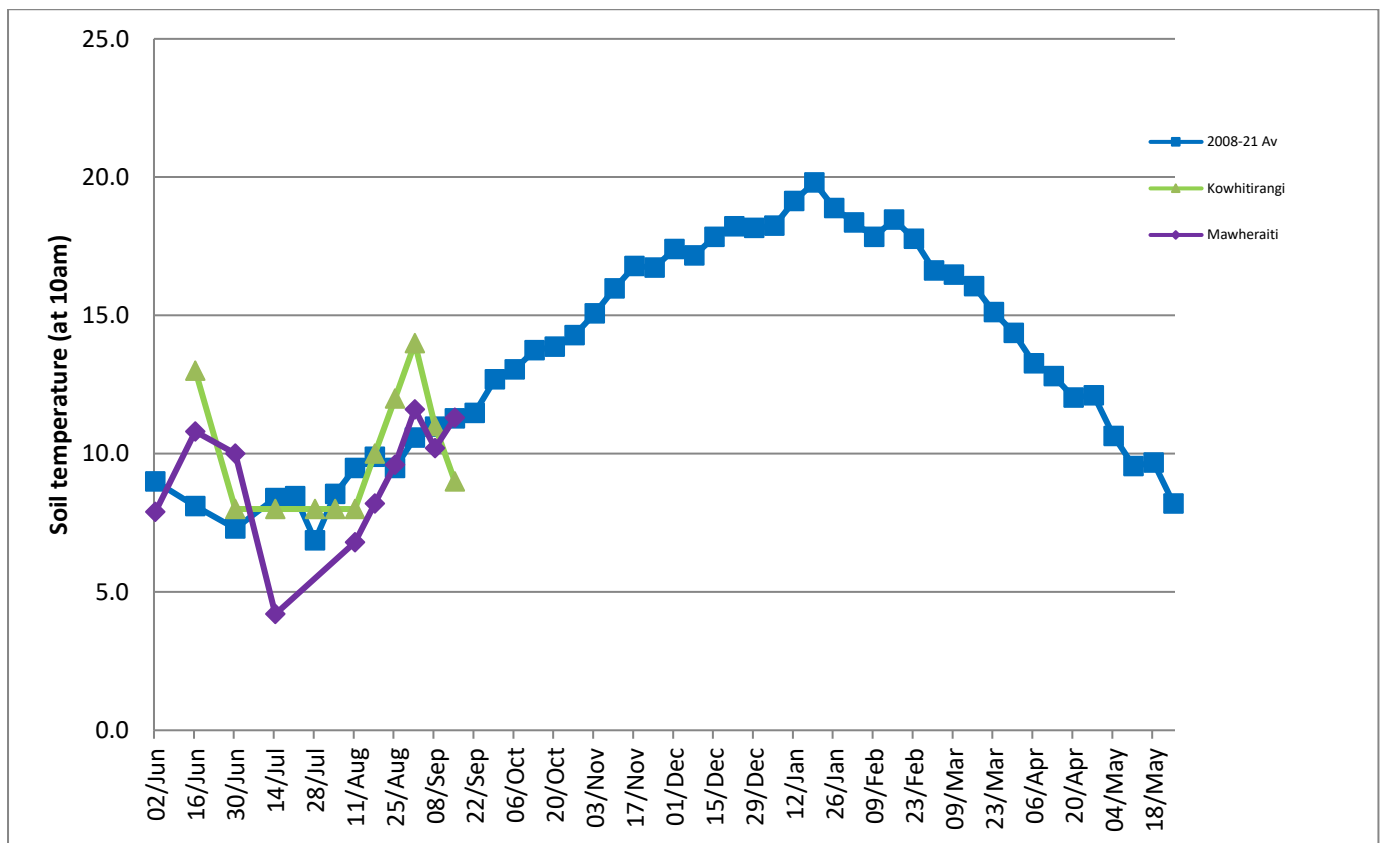
	Mawheraiti	Kowhitirangi
Average cover (kg DM/ha)	1991	1842
APC (8 September)	1981	1842
Rotation length (days)	50	33
Stocking rate	2.5	2.0
Percentage in milk	86% calved	79% calved
Milksolids kg/cow	1.93	1.92
Milksolids kg/ha	3.9	2.7
MS/cow (season to date)	35	29
MS/ha (season to date)	89	58
N (kg/ha) year to date		24.8
Current N application rate kg N/ha		
	2 August	4 August
DM%	13.1	15.9
Pasture ME	12.0	12.1
Pasture NDF	44.4	44.8
Pasture CP	25.2	31.6
Target Intake (kg DM/cow/d)	18	18
Supplement (kg/cow/day)	Mob 1 – 7.3	3.0
Soil temperature (°C)	11.3	9
Growth Rate (kg DM/day)	16	9
Rainfall	186	100
Conditions for farmwalk	Thunderstorms, torrential rain, flooding	Stunning, fine day, cold wind
Notes:	<p>Very wet week, river flooded through farm twice; more rubbish and fences to fix. Loading pad bugged. Joined colo with herd due to flooding cutting off lower terrace 1-6</p>	<p>Went 3 and 2 milking 27th August. Split herd into two herds 8 September 2021, working well and saving on pasture damage. 97 Replacements & 7 bull calves. Weather been wet, last two days fine and drying out slowly. Working on drainage in crop paddocks. Calving cows slowed down and now into SGL.</p>

NB: pasture quality data are for 1 sample collected from each farm.

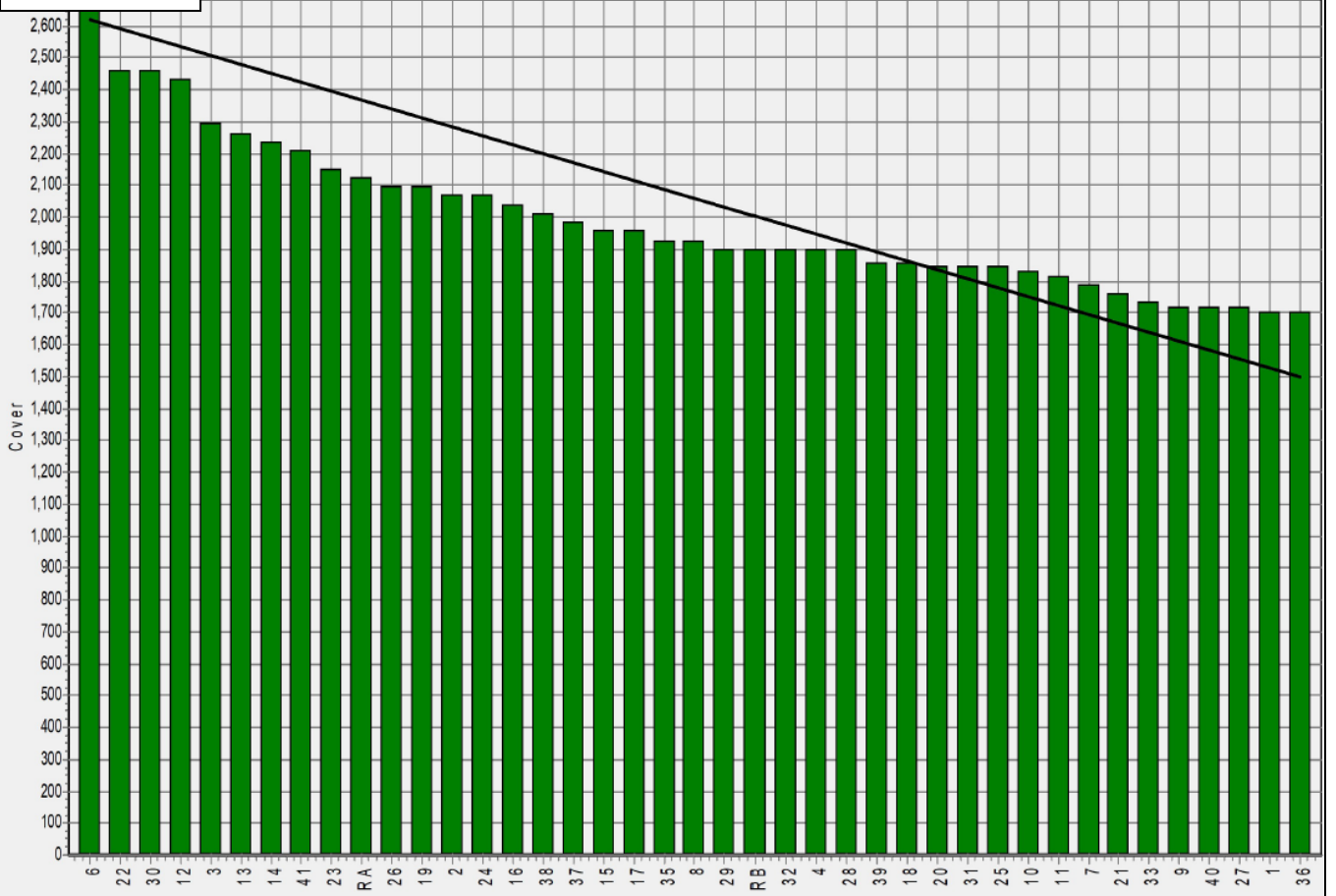
Weekly Pasture Growth Rates



Weekly Soil Temperature



Mawheraiti



Kowhitirangi



