

# Westland Monitor Farm Project

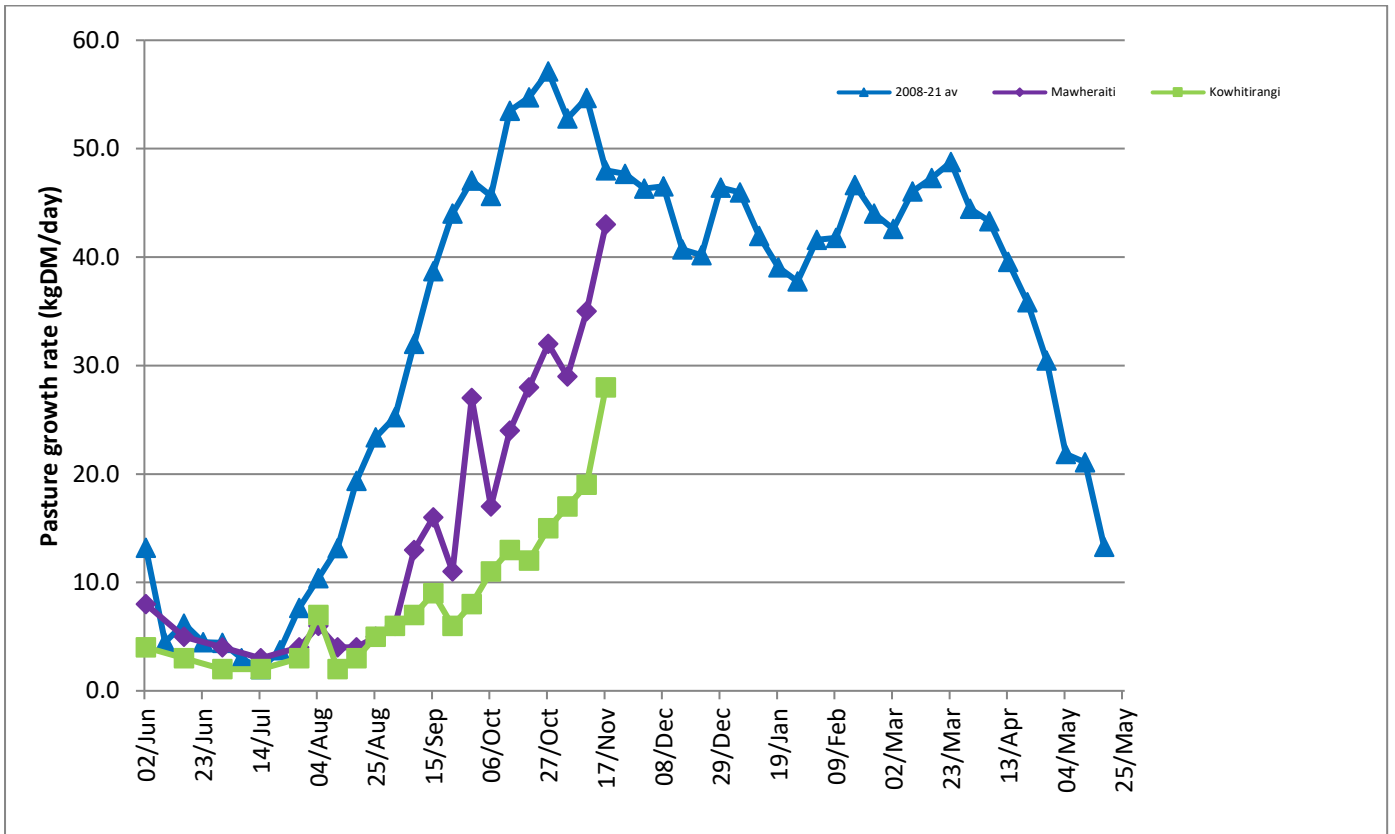
Weekly Update as at week ending Wednesday 17th November 2021.

## Farm Summary

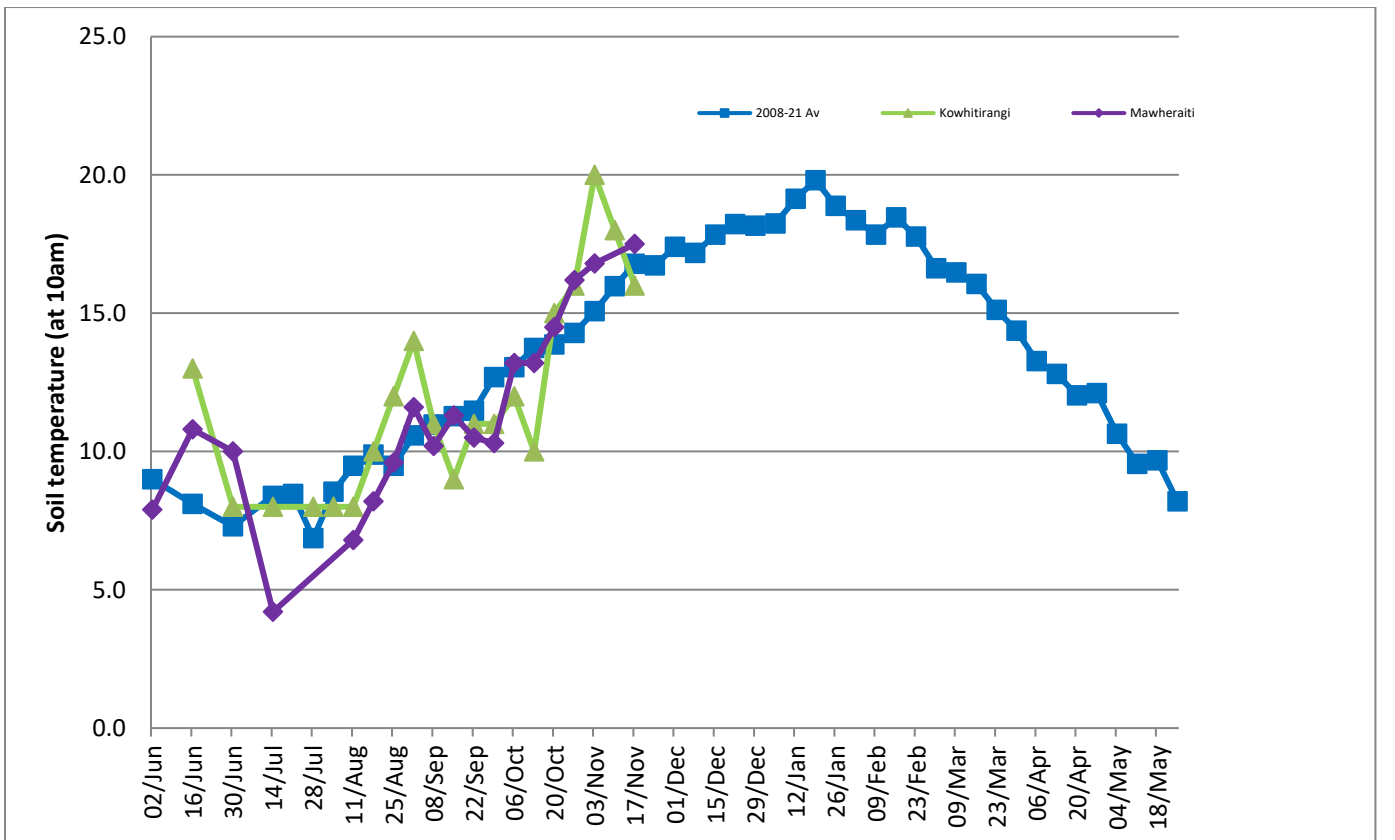
	Mawheraiti	Kowhitirangi
Average cover (kg DM/ha)	2169	1940
APC (10 November)	2087	1928
Rotation length (days)	23	24
Stocking rate	2.5	2.0
Percentage in milk	100%	100%
Milksolids kg/cow	1.85	2.1
Milksolids kg/ha	4.6	3.7
MS/cow (season to date)	155	140
MS/ha (season to date)	381	274
N (kg/ha) year to date	36	54
Current N application rate kg N/ha	18	
	1 November	3 November
DM%	12.5	16.4
Pasture ME	12.3	12.0
Pasture NDF	44.0	44.7
Pasture CP	24.7	23.6
Target Intake (kg DM/cow/d)	18	18
Supplement (kg/cow/day)	0	2.4
Soil temperature (°C)	17.5	16.0
Growth Rate (kg DM/day)	43	28
Rainfall	25	124
Conditions for farmwalk	Fine, warm	Fine, cool
Notes:	<p>Maize in</p> <p>Installed soil moisture probes</p> <p>Very hot and dry, will need rain soon</p> <p>Grass bolting jumped a few paddocks, won't last long without rain or irrigation</p> <p>Farm quad gearbox has issues, off to town, will be hard to shift k-line without it.</p>	<p>Wet week</p> <p>Catching up with odd jobs</p> <p>Drenched &amp; vaccinated calves</p> <p>Firewood</p>

NB: pasture quality data are for 1 sample collected from each farm.

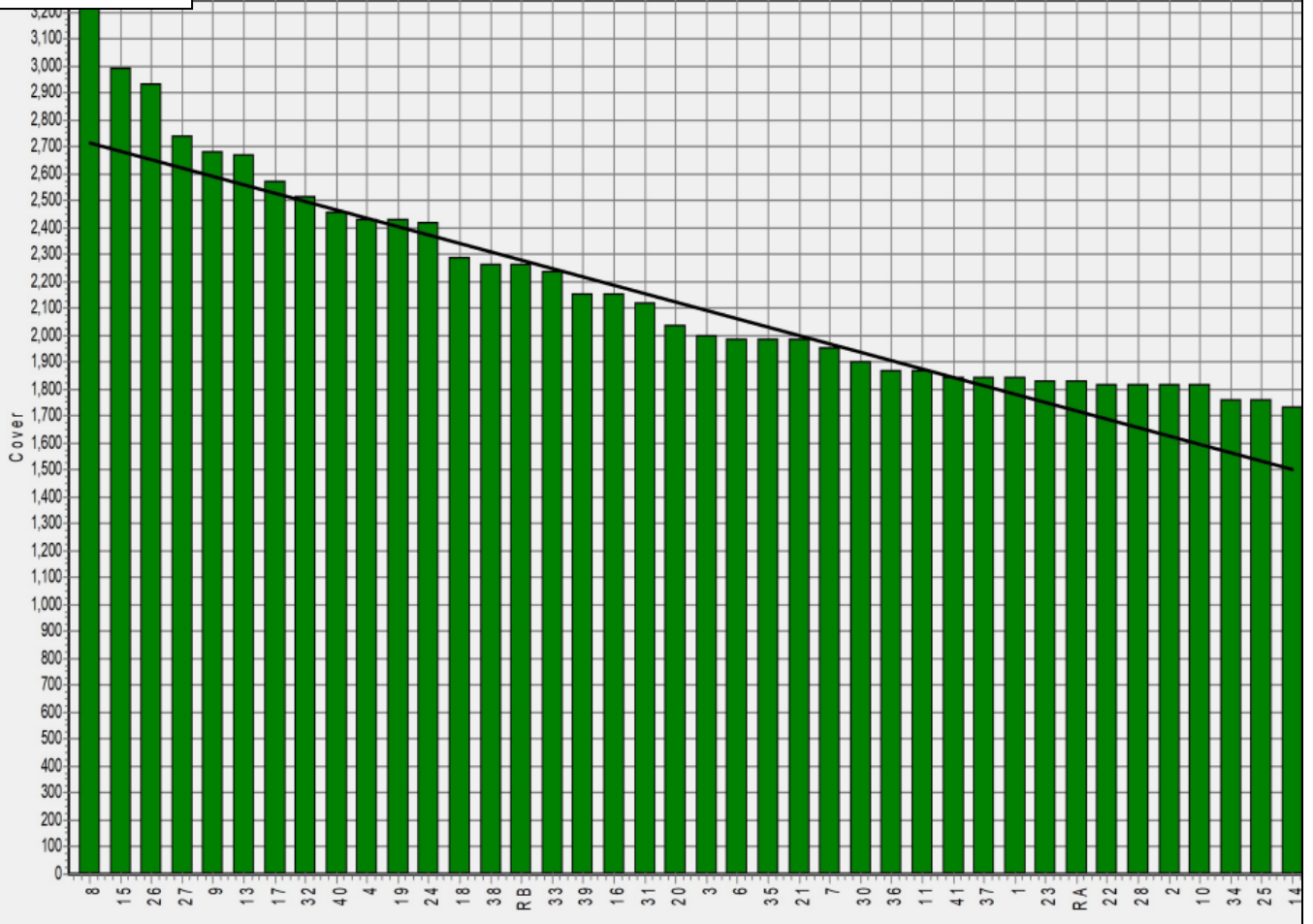
## Weekly Pasture Growth Rates



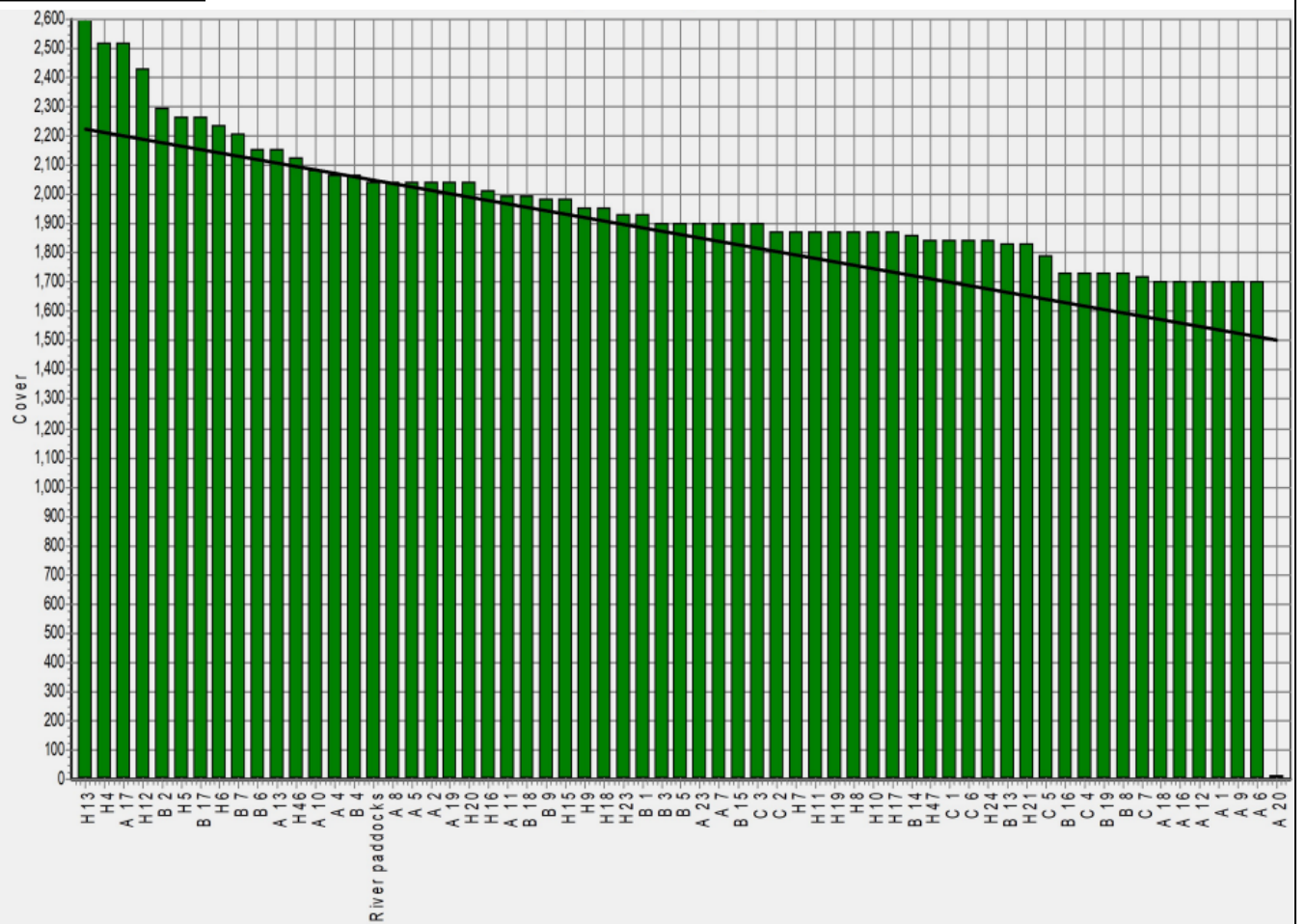
## Weekly Soil Temperature



### Mawheraiti



### Kowhitirangi





Kowhitirangi

Description	Date	RPM	% DM	% Prot	% Lipid	% ADF	% NDF	Sol Sugar	OMD %	MJME /kg
Paddock 1	14/10/20	9.7	12.9	31.7	4.0	23.9	49.0	6.8	83.2	12.1
Paddock 19b	4/11/20	11.8	10.9	27.6	3.6	27.4	54.0	3.9	78.3	11.4
Paddock 11a	2/12/20	11.4	15.4	26.7	3.3	24.2	42.0	7.9	82.2	12.0
Paddock 16a	13/1/21	15.7	16.0	18.8	3.3	28.0	49.2	9.9	76.9	11.2
Paddock 9b	10/2/21	15.7	16.0	20.6	3.4	22.6	40.8	12.7	>85	12.5
Paddock A2	3/3/21	14.6	11.6	29.0	3.9	26.3	51.8	3.0	80.1	11.7
Paddock 10a	7/4/21	12.8	9.8	26.0	3.3	24.0	46.5	6.4	80.7	11.8
Paddock 19 new block	4/8/21	10.0	15.9	31.6	4.2	25.1	44.8	6.5	82.7	12.1
Paddock C2	6/10/21	9.4	10.7	22.5	3.6	28.0	51.5	7.1	78.4	11.4
Paddock 19B	3/11/21	9.6	16.4	23.6	3.5	23.9	44.7	10.8	82.5	12.0

\* Test analytes which have occurred as outliers on the NIRS calibration are indicated by \* and should be treated as an approximation only.