

# Westland Monitor Farm Project

Weekly Update as at week ending Wednesday 20<sup>th</sup> October 2021.

## CO Comment

Some sunshine at last! Long may it continue but it is evident that the spring boost is still lagging for the entire West Coast. The warm sunny days are dotted few and far between by many a day of cloudy or wet weather but rest assured that a flush of grass growth is coming.

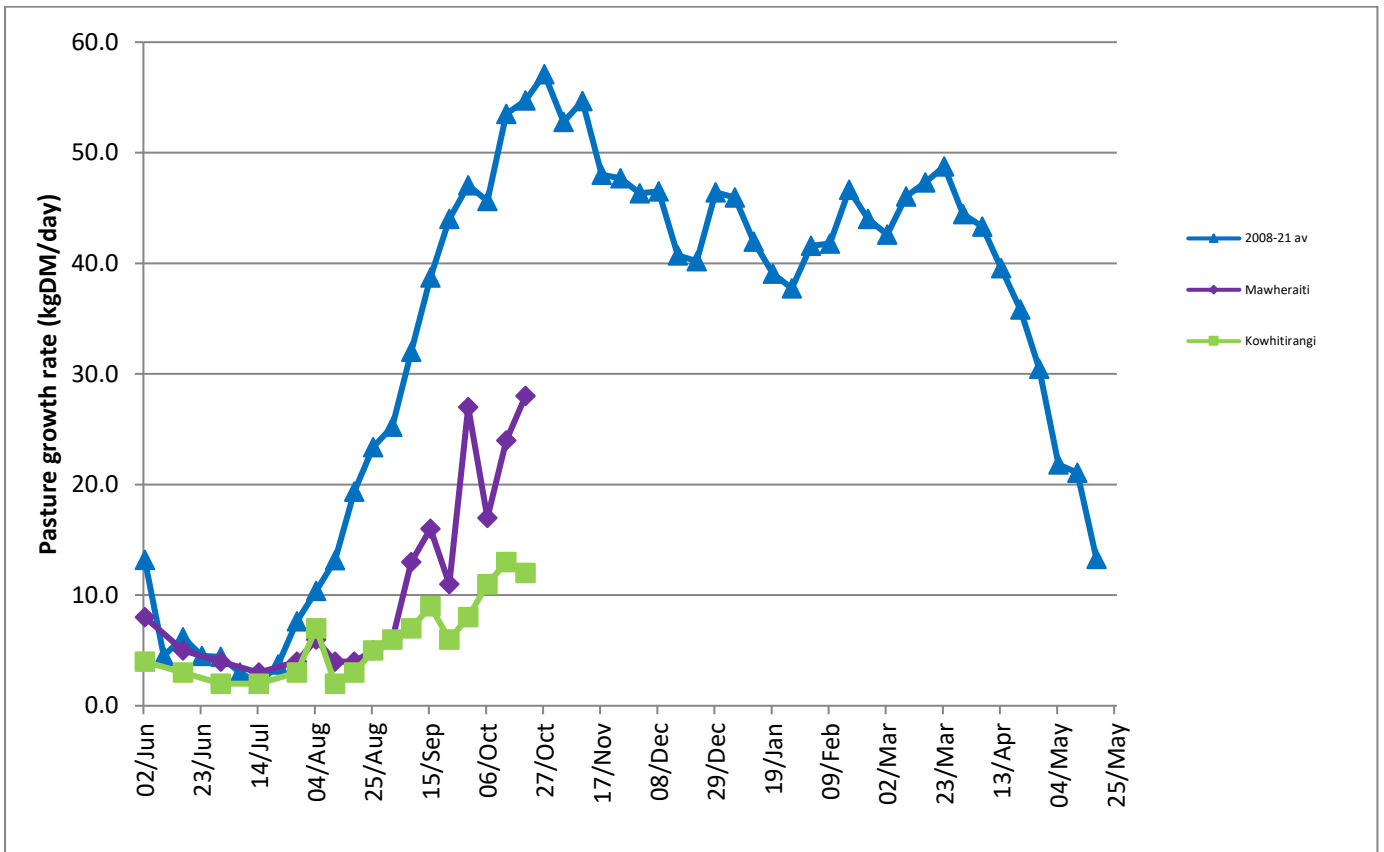
This is my last week as the Extension Partner for DairyNZ on the West Coast. What a whirlwind of a time. I have been with DairyNZ for 5 years as a Consulting Officer and newly named Extension Partner. I have always loved the Coast and even more so now that I have an appreciation for the nuances that each little farming region has. We vary greatly throughout the region but one thing we do all have in common is that unique community spirit that is not necessarily evident in other regions. I have felt welcomed by each area and I will always feel like a part of each little community up and down the Coast. I have done my best to represent the region within DairyNZ, highlighting issues and suggesting regionally specific ideas. Thanks to everyone in the region who has allowed me insight into their farm system and those who have engaged with me during my time at DairyNZ. I have found it very interesting. We have a great community, full of people willing to share their learnings and ideas, please keep doing that. I don't know what the next chapter holds but I will still be about; I'm still a farmer, so you'll probably see me around.

## Farm Summary

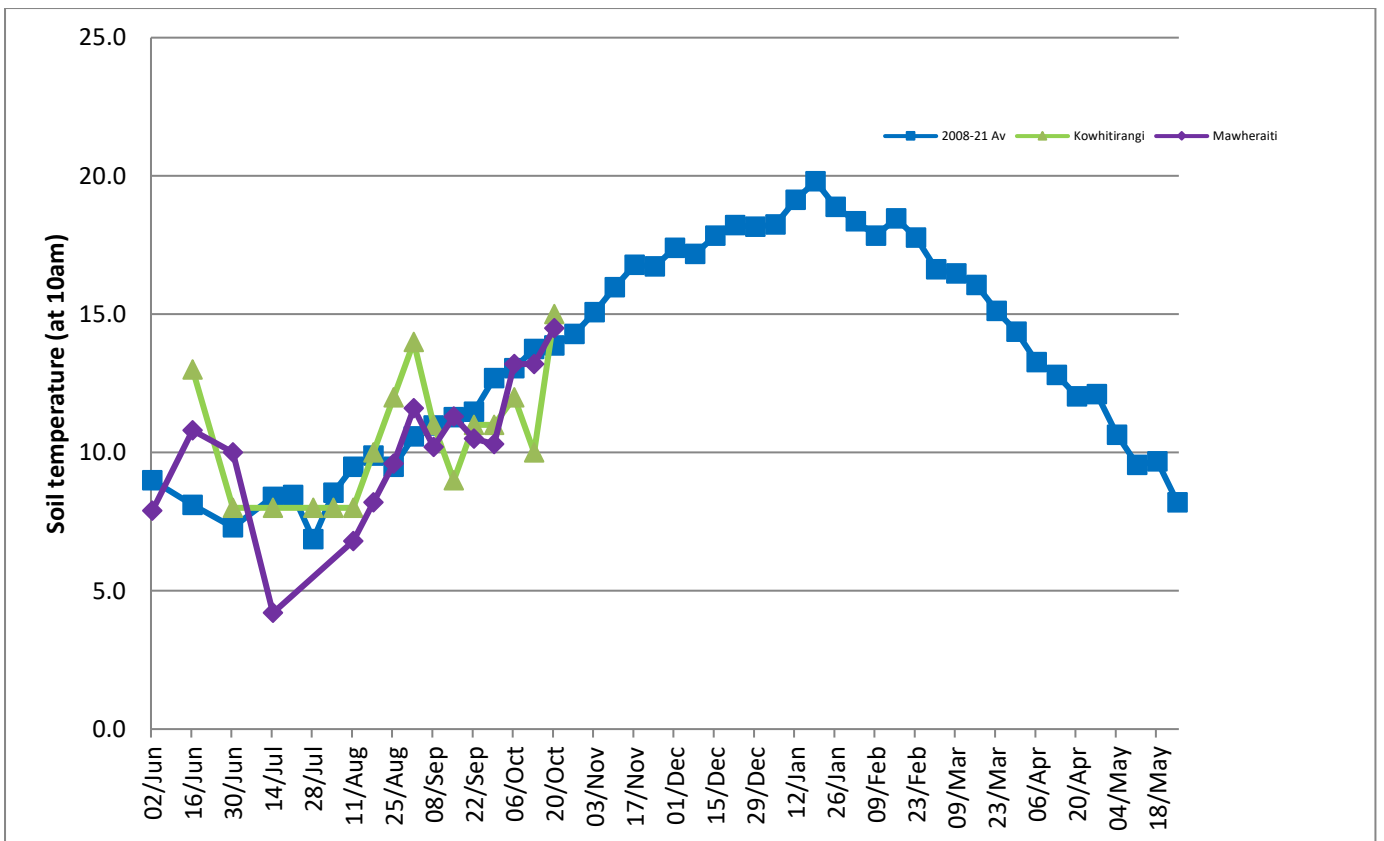
|                                    | Mawheraiti   | Kowhitirangi   |
|------------------------------------|--|--|
| Average cover (kg DM/ha)           | 1994   | 1837   |
| APC (13 October)                   | 1953   | 1830   |
| Rotation length (days)             | 25   | 21   |
| Stocking rate                      | 2.5  | 2.0  |
| Percentage in milk                 | 100%   | 99% calved   |
| Milksolids kg/cow                  | 1.9  | 2.0  |
| Milksolids kg/ha                   | 4.7  | 3.5  |
| MS/cow (season to date)            | 101  | 88   |
| MS/ha (season to date)             | 250  | 172  |
|                                    |  |  |
| N (kg/ha) year to date             | 20   | 54   |
| Current N application rate kg N/ha | 18   | 30   |
|                                    |  |  |
|                                    | 4 October  | 6 October  |
| DM%                                | 13.2   | 10.7   |
| Pasture ME                         | 11.2   | 11.4   |
| Pasture NDF                        | 49.4   | 51.5   |
| Pasture CP                         | 18.7   | 22.5   |
|                                    |  |  |
| Target Intake (kg DM/cow/d)        | 18   | 18   |
| Supplement (kg/cow/day)            | 3.0  | 3.5  |
|                                    |  |  |
| Soil temperature (°C)              | 14.5   | 15.0   |
| Growth Rate (kg DM/day)            | 28   | 12   |
| Rainfall                           | 80   | 80   |
| Conditions for farmwalk            | Pouring down   | Fine day   |
| Notes:                             | <p>Got wallies block silage off approx. 40t<br/> Pdk 12 ploughed, paddock 5, 29 disced ready for maize or grass<br/> Started putting super on with clover seed<br/> Norm borrowed effluent pump<br/> 80 mls rain has made ground very wet again.</p> | <p>Managed to get crop paddocks cultivated 2 cows to calve<br/> Changed milking times to 5am, 5pm &amp; 11am<br/> Applied fertiliser with the helicopter on the 13th October 100kg/ ha Urea, Ammo, K over 114ha of the wetter part of farm, tractor over the rest;<br/> Grass starting to grow with warmer weather<br/> Drench and B12 milkers &amp; R2's.</p> |

NB: pasture quality data are for 1 sample collected from each farm.

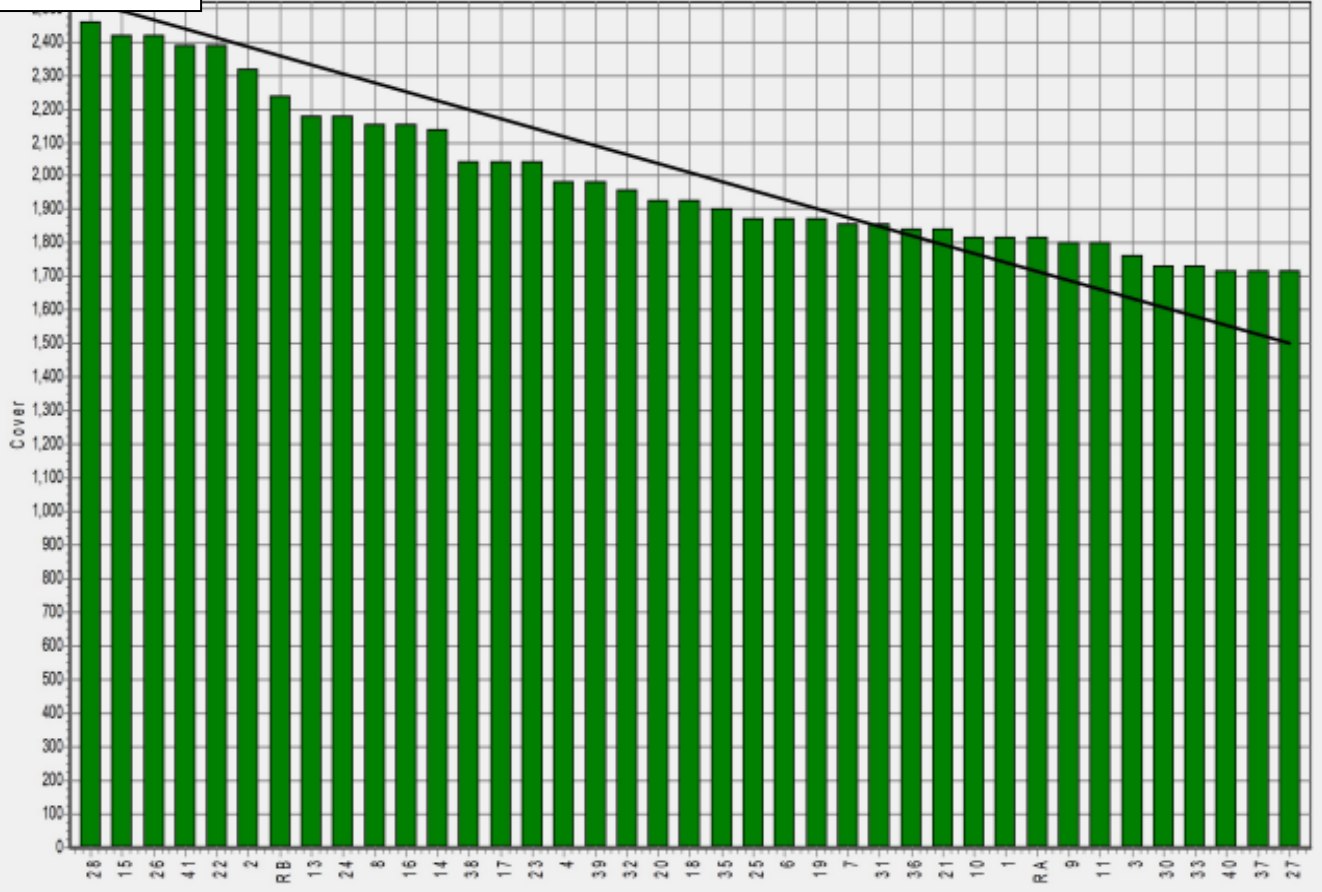
## Weekly Pasture Growth Rates



## Weekly Soil Temperature



### Mawheraiti



### Kowhitirangi

