

Westland Monitor Farm Project

Weekly Update as at week ending Wednesday 22nd September 2021.

CO Comment

More rain this week has seen growth still below levels many are used to by now. Be assured balance date is coming but it may be a bit later than usual. There are a range of balance dates across the Coast due to the geographical spread of the region and differing climates. Supplement in the form of good quality milking baleage is hard to find in any quantity. We need to stay mindful of this as the shortage may be evident for some time and could impact ability to stock up for next year if it is routinely purchased into the system.

In saying that the Mawheraiti monitor farm is organised to cut some silage at the runoff in a couple of weeks and are prepping to get the maize drilled too. The last of their maize has been fed to cows and they are opening them up on pasture to ensure they are fully fed.

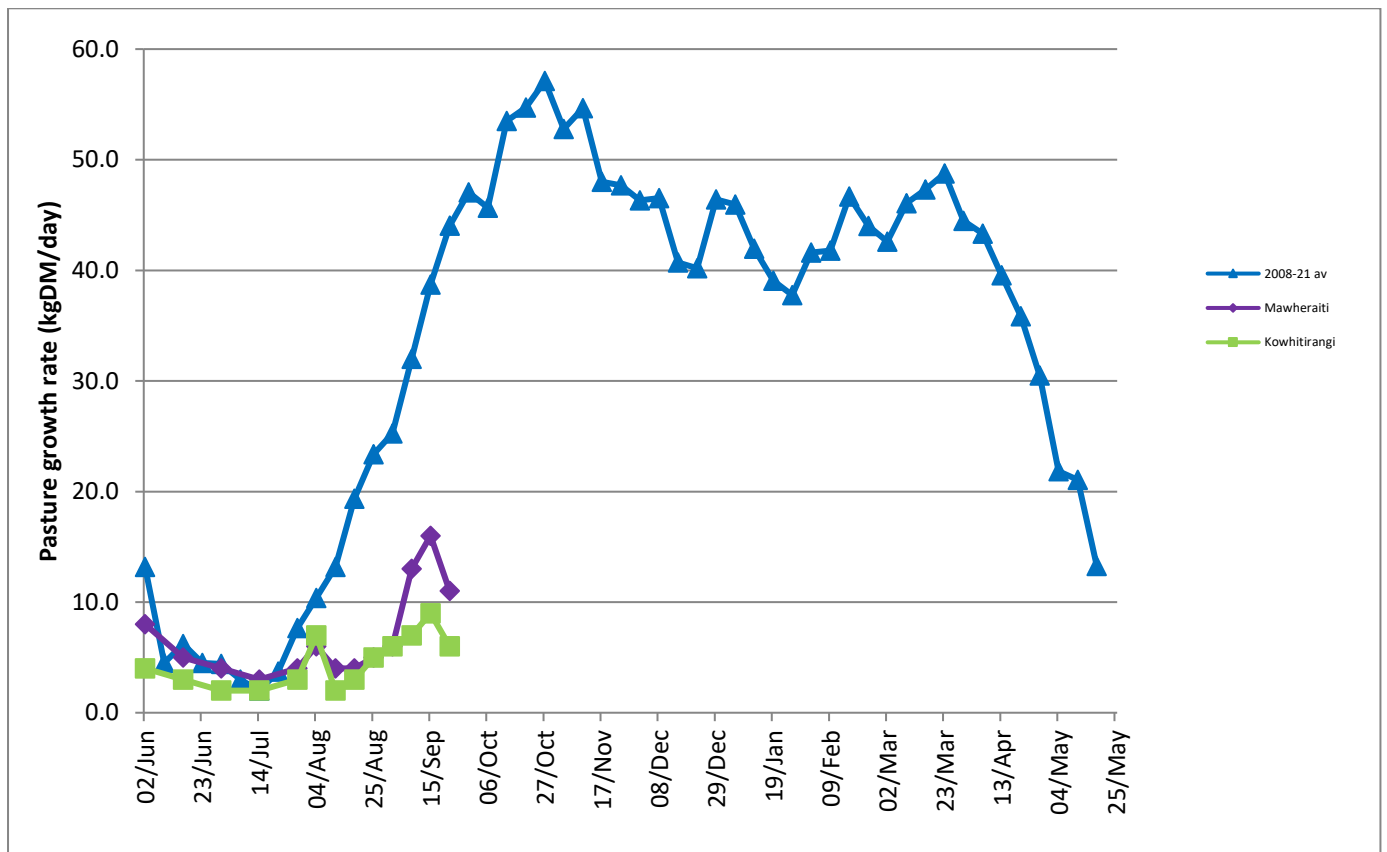
The Kowhiterangi monitor farm has noted that it is still wet underfoot too with growth slower than normal. They have sent some surplus stock to the works in the form of cows that have shown up empty and some cows which are not performing. This will ensure they only have pregnant or productive animals on the property, and they are not feeding any passengers, to make the most of the feed available.

Farm Summary

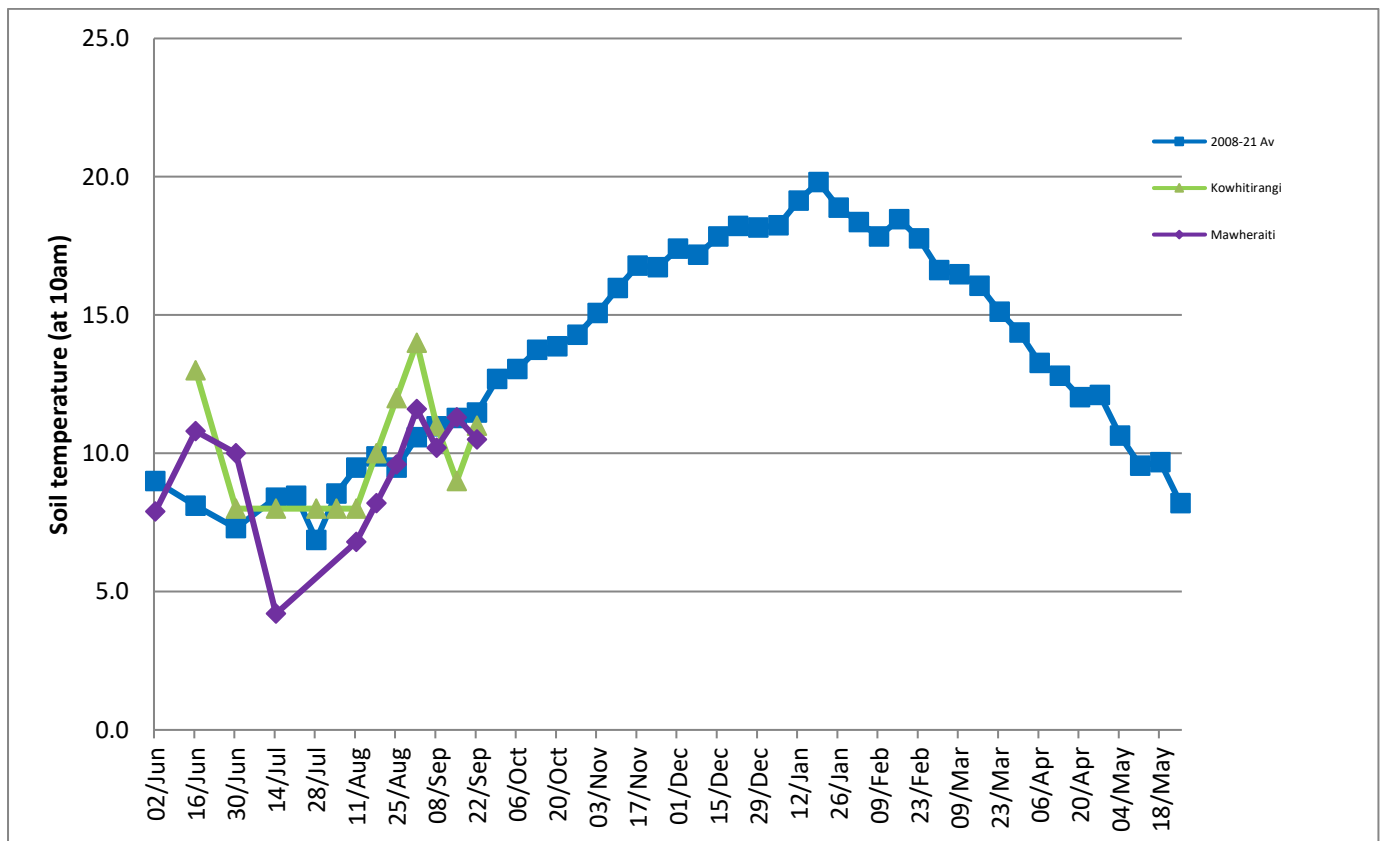
	Mawheraiti	Kowhitirangi
Average cover (kg DM/ha)	1947	1826
APC (15 September)	1991	1842
Rotation length (days)	37	27
Stocking rate	2.5	2.0
Percentage in milk	93% calved	89% calved
Milksolids kg/cow	1.96	1.84
Milksolids kg/ha	4.2	2.9
MS/cow (season to date)	48	38
MS/ha (season to date)	118	75
N (kg/ha) year to date	4	24.8
Current N application rate kg N/ha	18	
	2 August	4 August
DM%	13.1	15.9
Pasture ME	12.0	12.1
Pasture NDF	44.4	44.8
Pasture CP	25.2	31.6
Target Intake (kg DM/cow/d)	18	18
Supplement (kg/cow/day)	Mob 1 – 4.3	3.5
Soil temperature (°C)	10.5	11
Growth Rate (kg DM/day)	11	6
Rainfall	20	117
Conditions for farmwalk	Brilliant day, warm and sunny with occasional cool wind	Fine, after lots of rain. Farm very wet.
Notes:	Nice fine end to week after bloody wet start. 17 cows left to calve. Milkers down to only 2kg maize, Pit will be finished by end of week. Opening cows up on grass. Cows don't like flooded grass too much. Gary booked to chop silage at run-off in a couple of weeks. Also booked for groundwork drilling maize.	3 in 2 milking all season. 110 Calves. Very wet, no growth. 90ha fert applied Ammo 30N 80kg/ha. Calving cows slowed down and now into SGL 41 to calve. 6 MT cows and 2 culls sent to works. Fencing, fixing water lines & cutting firewood in between showers. New electric fence unit for backing and new LED light for shed

NB: pasture quality data are for 1 sample collected from each farm.

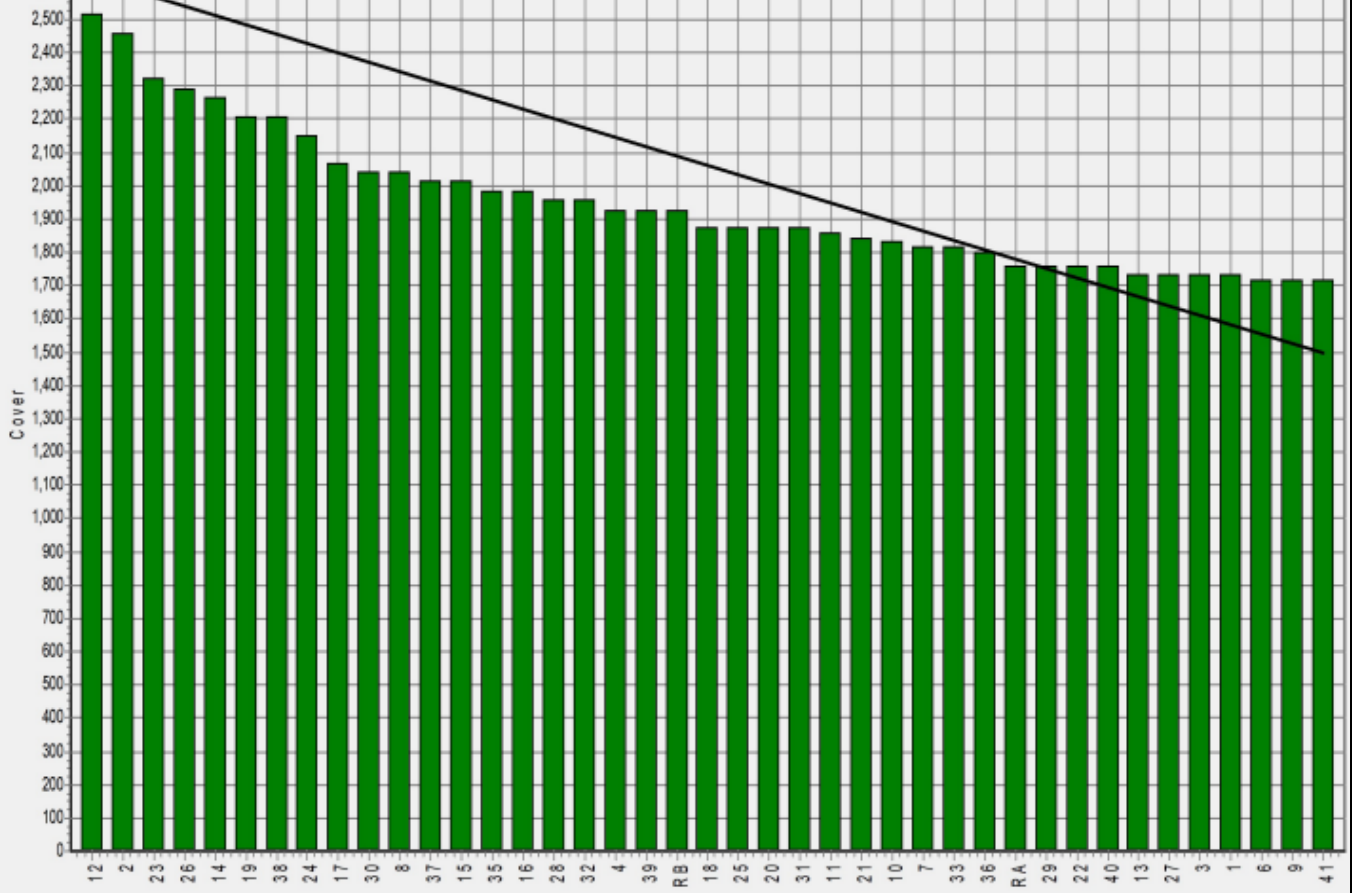
Weekly Pasture Growth Rates



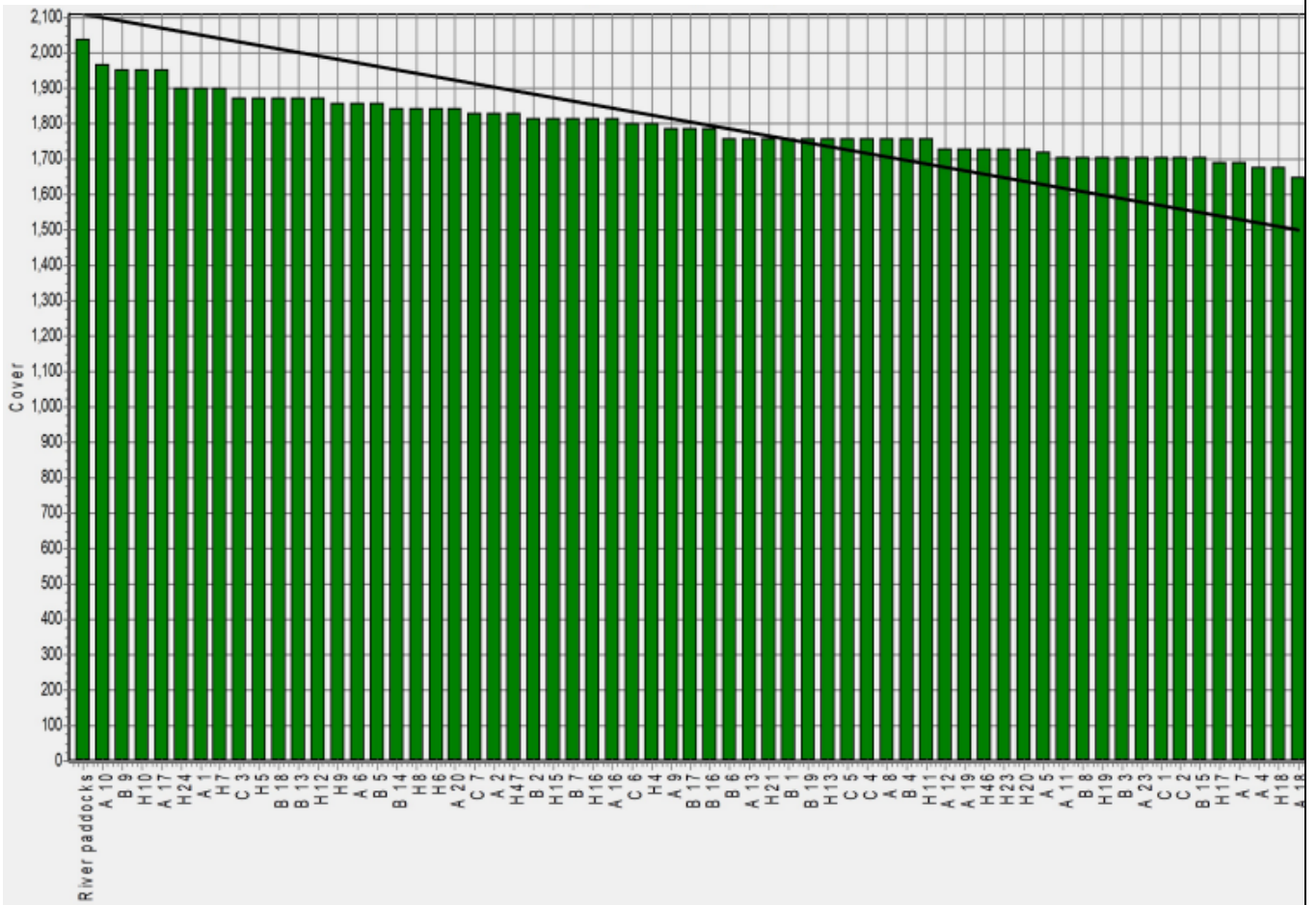
Weekly Soil Temperature



Mawheraiti



Kowhitirangi



Kowhitiranqi

Description	Date	RPM	% DM	% Prot	% Lipid	% ADF	% NDF	Sol Sugar	OMD %	MJME /kg
Paddock 3c	5/8/20	10.2	11.7	30.9	4.3	23.5	45.9	7.1	81.3	11.9
Paddock 4a	2/9/20	11.8	17.3	25.8	4.2	21.5	42.3	12.0	>85	>12.7
Paddock 1	14/10/20	9.7	12.9	31.7	4.0	23.9	49.0	6.8	83.2	12.1
Paddock 19b	4/11/20	11.8	10.9	27.6	3.6	27.4	54.0	3.9	78.3	11.4
Paddock 11a	2/12/20	11.4	15.4	26.7	3.3	24.2	42.0	7.9	82.2	12.0
Paddock 16a	13/1/21	15.7	16.0	18.8	3.3	28.0	49.2	9.9	76.9	11.2
Paddock 9b	10/2/21	15.7	16.0	20.6	3.4	22.6	40.8	12.7	>85	12.5
Paddock A2	3/3/21	14.6	11.6	29.0	3.9	26.3	51.8	3.0	80.1	11.7
Paddock 10a	7/4/21	12.8	9.8	26.0	3.3	24.0	46.5	6.4	80.7	11.8
Paddock 19 new block	4/8/21	10.0	15.9	31.6	4.2	25.1	44.8	6.5	82.7	12.1

* Test analytes which have occurred as outliers on the NIRS calibration are indicated by * and should be treated as an approximation only.