

# Westland Monitor Farm Project

**Weekly Update** as at week ending Wednesday 25<sup>th</sup> August 2021.

## CO Comment

Cows are calving and we have milk in the vat. Most farmers are well into calving by now. The West Coast seems to have kicked off the season with some fairly wet conditions. I know everyone will be doing their best to protect pastures and soils but with multiple mobs at this time of year it is hard to know how to do this sometimes. Back fencing as much as possible where practical can help minimise pugging and soil compaction and reduce volumes of surface runoff.

Be sure to leave critical source areas to be grazed during a period of more favourable weather (if at all). When cows graze a CSA during the wet weather, this is where most pugging damage occurs and often creates a larger CSA to deal with next time.

By protecting our pastures as best we can now, we will ensure that the plant is in a good position to respond and grow for subsequent rounds. It will also prevent areas becoming unproductive and infested with weeds.

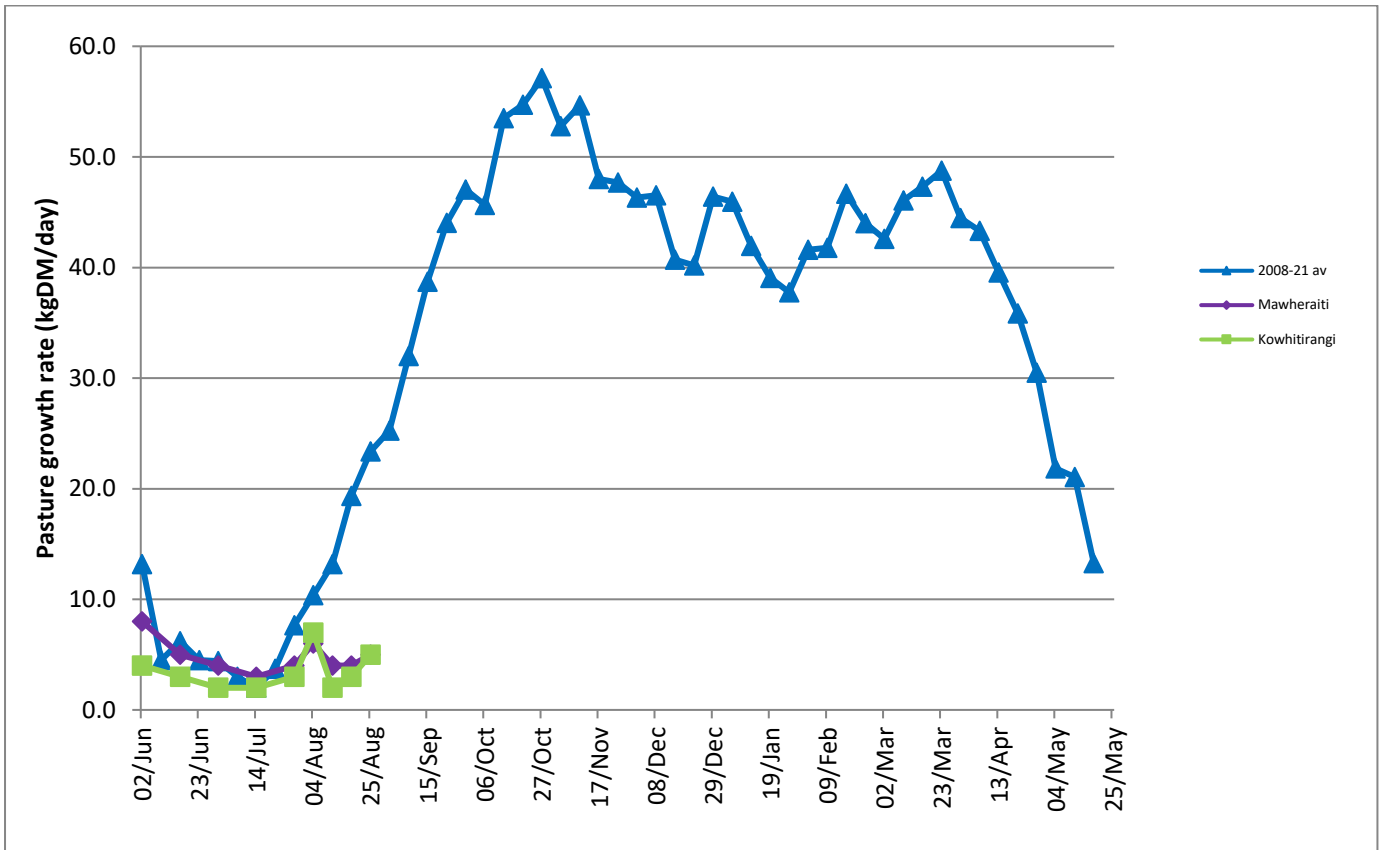
## Farm Summary

	Mawheraiti	Kowhitirangi
Average cover (kg DM/ha)	2090	1907
APC (18 August)	2144	1918
Rotation length (days)	72	
Stocking rate		
Percentage in milk	57% calved	50% calved
Milksolids kg/cow	1.64	1.38
Milksolids kg/ha	2.0	1.0
MS/cow (season to date)	2	1
MS/ha (season to date)	20	12
N (kg/ha) year to date		28.5
Current N application rate kg N/ha		28.5
	2 August	4 August
DM%	13.1	15.9
Pasture ME	12.0	12.1
Pasture NDF	44.4	44.8
Pasture CP	25.2	31.6
Target Intake (kg DM/cow/d)	18	
Supplement (kg/cow/day)	Mob 1 – 8.5	13
Soil temperature (°C)	9.6	12.0
Growth Rate (kg DM/day)	5	5
Rainfall	65	103
Conditions for farmwalk	Showers	Showers
Notes:	Had a few fine days but ground very wet, just trying to feed cows as well as can, utilisation very poor on wet days.	Lockdown, very wet under foot, trying to minimise pasture damage, only stock on grass are milkers and colostrum's. R1 on grass during day and PKE at night in barn. Milkers receiving 3kg meal in shed per day. Have put 80kg Ammo on 125 ha Not worrying about fixing crop paddocks until it is dry. Too cold to put in before October. Dry cows have four more days of crop.

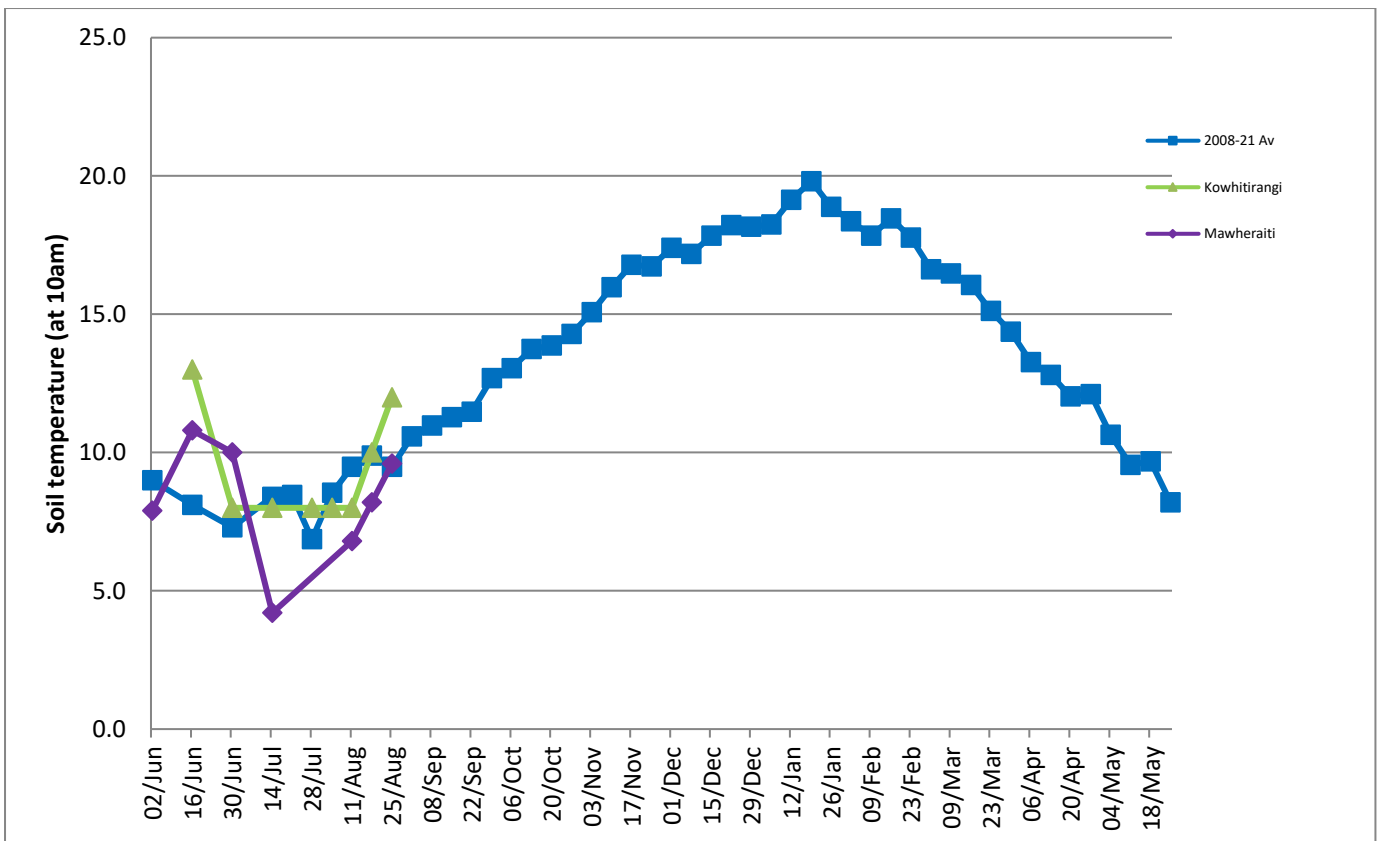
		Calving cows on calving pad with only four more days silage 23 August reached halfway for calving cows Have bought 12T PKE for calving cows and dry's going forward. 60 Replacements & 6 bull calves so far.
--	--	---

NB: pasture quality data are for 1 sample collected from each farm.

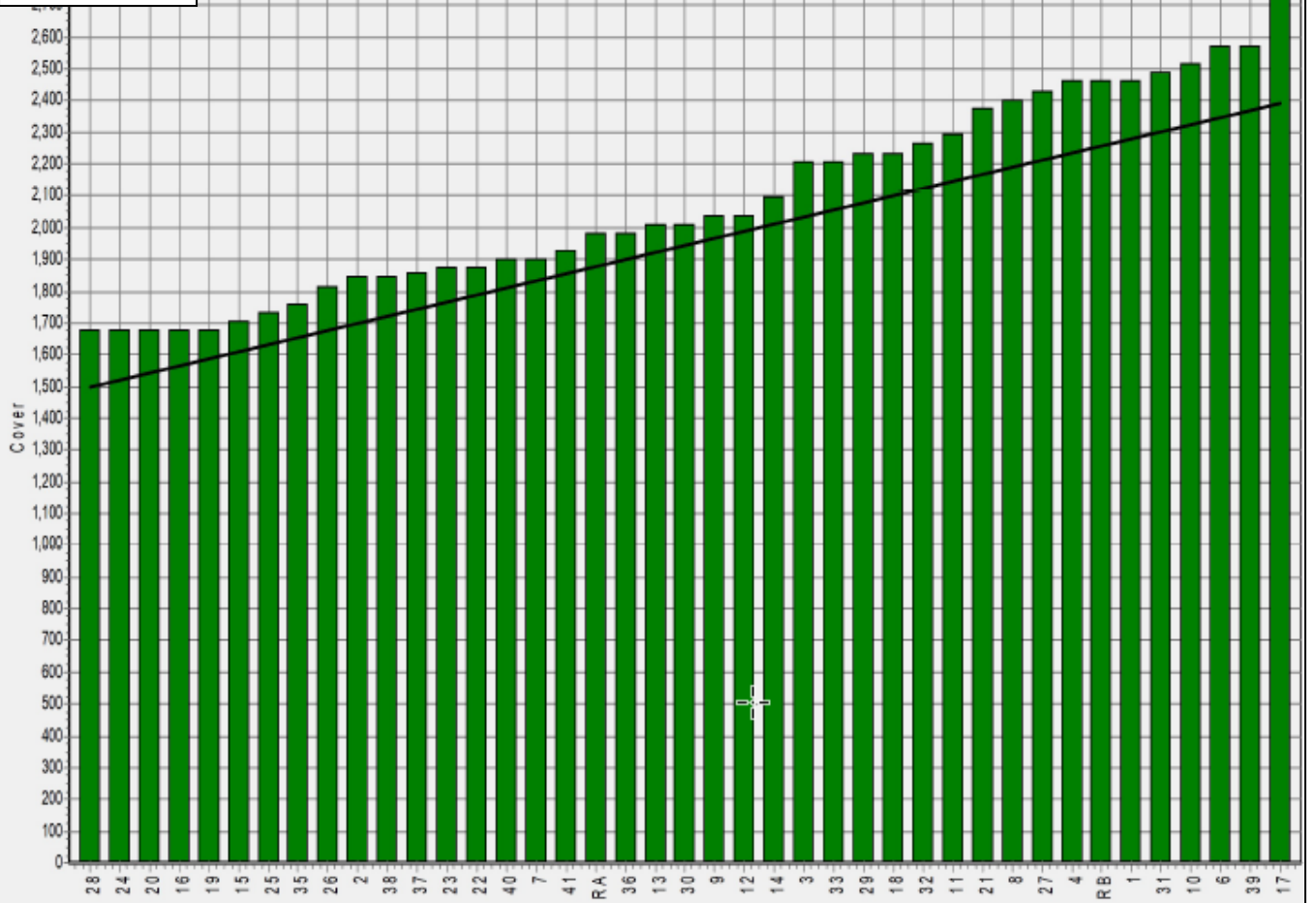
## Weekly Pasture Growth Rates



## Weekly Soil Temperature



### Mawheraiti



### Kowhitirangi

