

Westland Monitor Farm Project

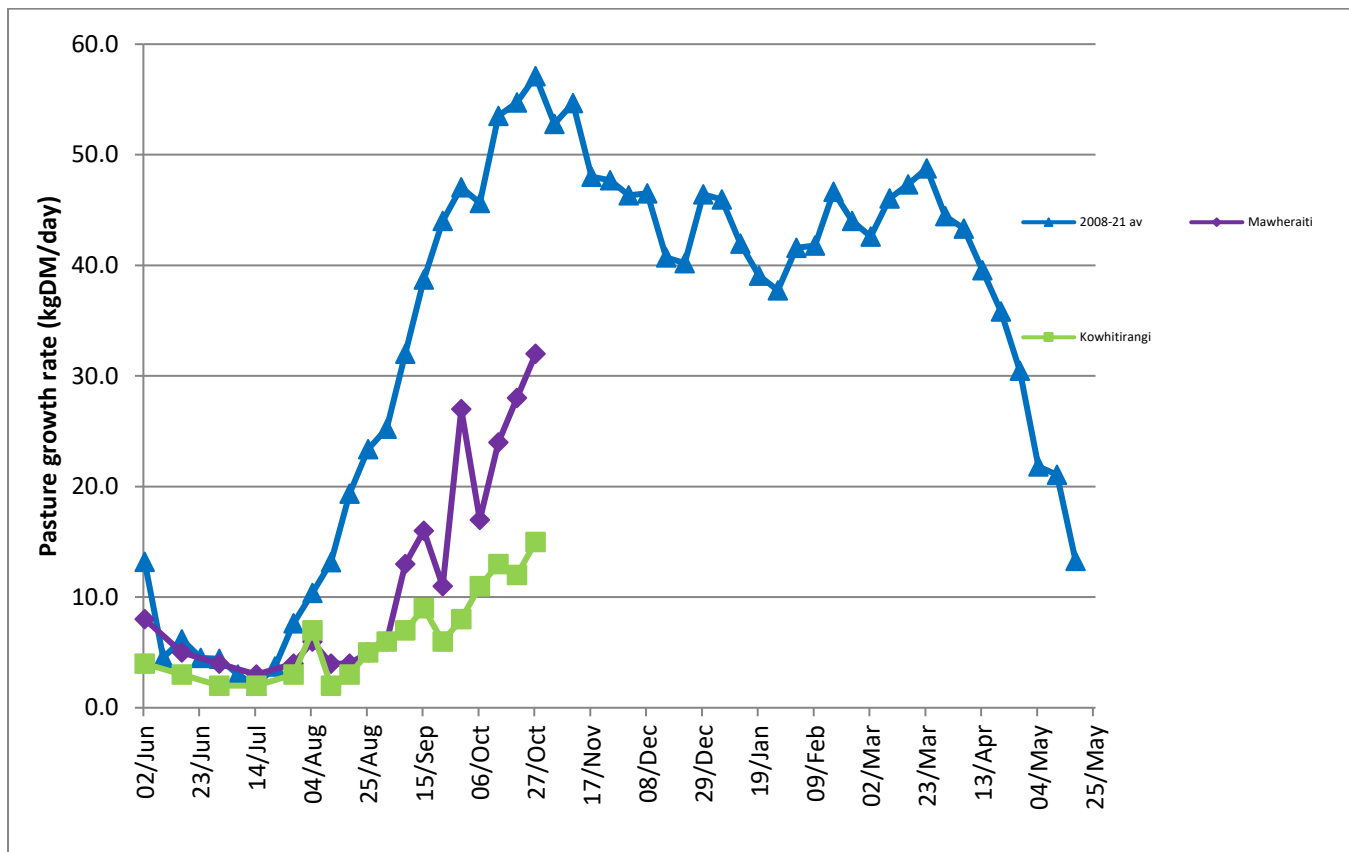
Weekly Update as at week ending Wednesday 20th October 2021.

Farm Summary

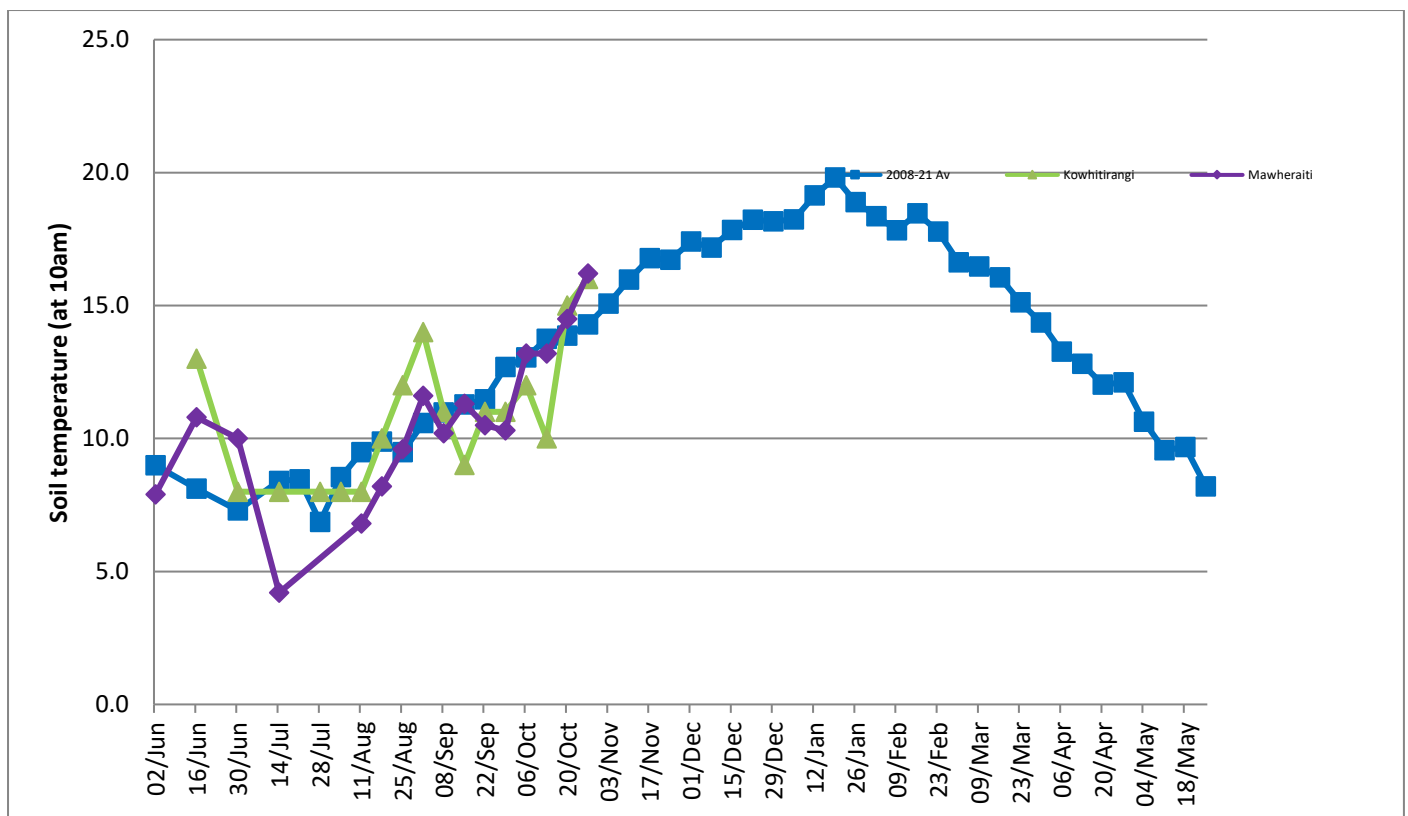
	Mawheraiti	Kowhitirangi
Average cover (kg DM/ha)	2047	1876
APC (20 October)	1994	1837
Rotation length (days)	25	23
Stocking rate	2.5	2.0
Percentage in milk	100%	100%
Milksolids kg/cow	1.95	2.1*
Milksolids kg/ha	4.8	3.8
MS/cow (season to date)	115	101
MS/ha (season to date)	283	198
N (kg/ha) year to date	24	54
Current N application rate kg N/ha	18	
	4 October	6 October
DM%	13.2	10.7
Pasture ME	11.2	11.4
Pasture NDF	49.4	51.5
Pasture CP	18.7	22.5
Target Intake (kg DM/cow/d)	18	18
Supplement (kg/cow/day)	1.5	3.2
Soil temperature (°C)	16.2	16.0
Growth Rate (kg DM/day)	32	15
Rainfall	8	18
Conditions for farmwalk	Warm and sunny	Rain cleared, then sunny and warm
Notes:	<p>Sprayed wallies ready for maize; 2 maize pdks at home ready to drill;</p> <p>Sunny week, stopped feeling silage, grass growing well, probably on the verge of a surplus. Cows very happy to see sun. Mating started on 23rd;</p> <p>Got a water grade after the last lot of rain, after looking at has been put down to diet (low dm grass);</p> <p>First lot of calves weaned off milk.</p>	<p>*Figure provided by farmer.</p> <p>Managed to get crop paddocks cultivated;</p> <p>All cows calved;</p> <p>Changed milking times to 5am, 5pm & 11am;</p> <p>Grass starting to grow with warmer weather;</p> <p>Bulls with heifers 25/10/21</p>

NB: pasture quality data are for 1 sample collected from each farm.

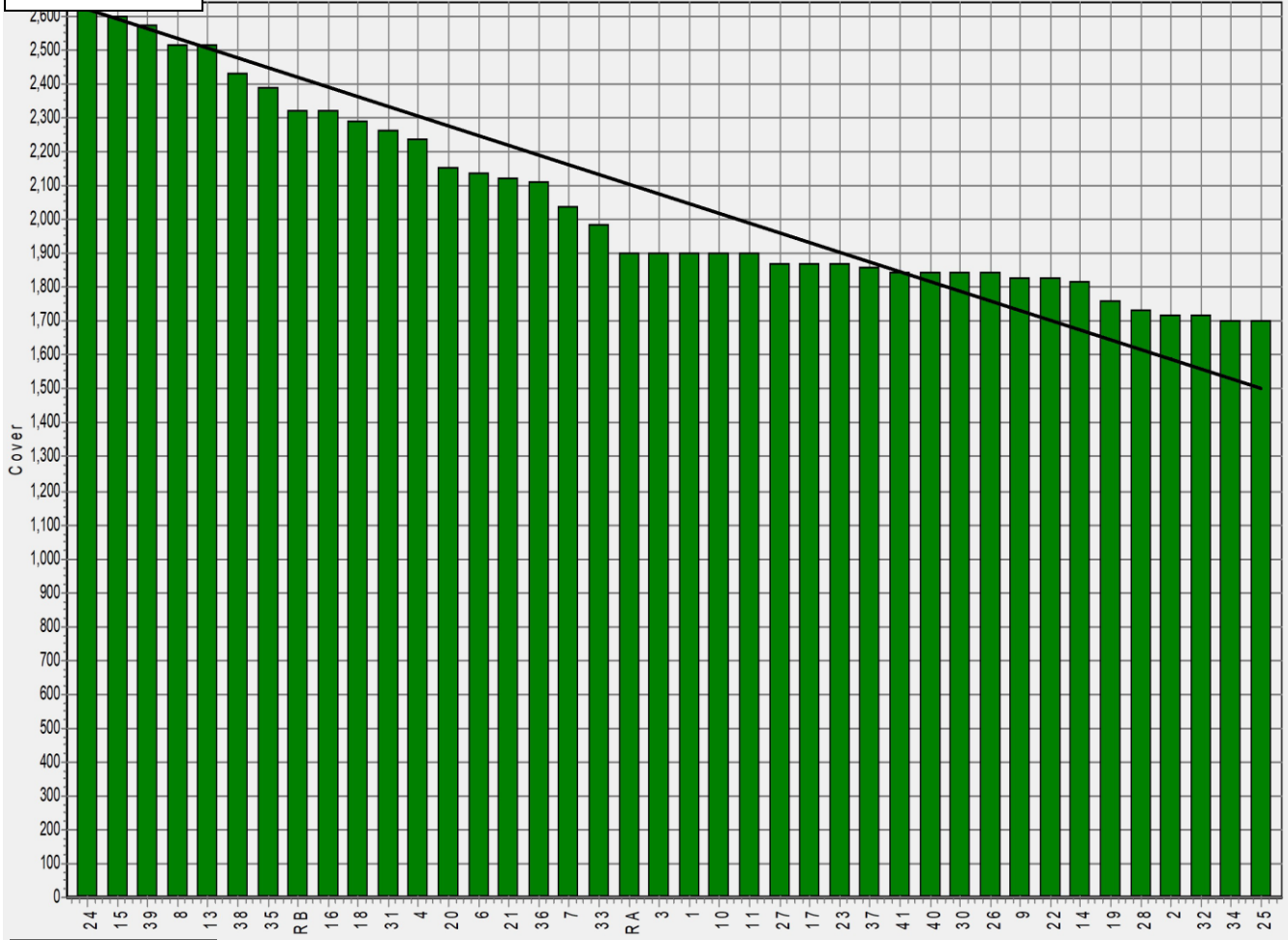
Weekly Pasture Growth Rates



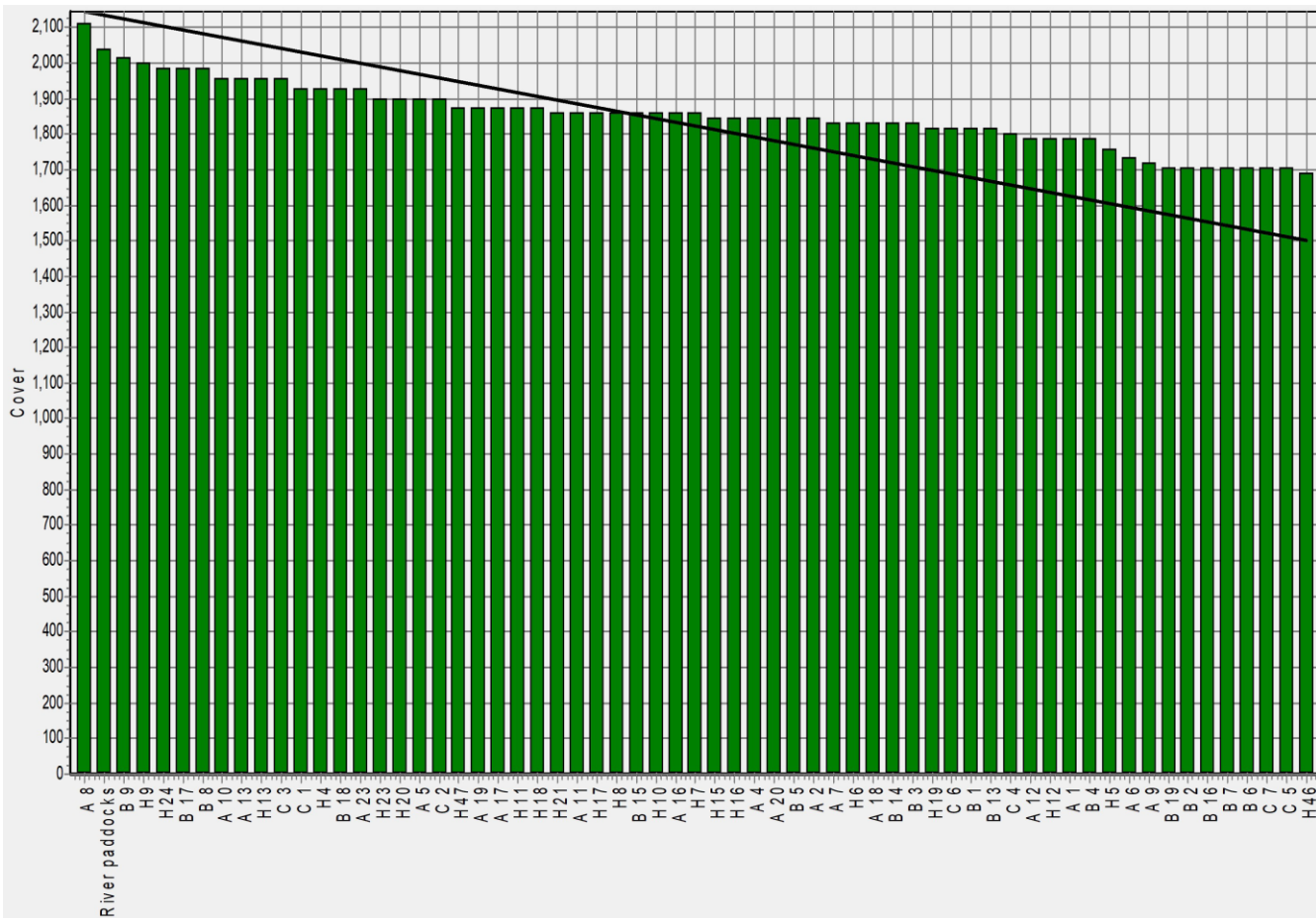
Weekly Soil Temperature



Mawheraiti



Kowhitirangi



Kowhitirangi

Description	Date	RPM	% DM	% Prot	% Lipid	% ADF	% NDF	Sol Sugar	OMD %	MJME /kg
Paddock 1	14/10/20	9.7	12.9	31.7	4.0	23.9	49.0	6.8	83.2	12.1
Paddock 19b	4/11/20	11.8	10.9	27.6	3.6	27.4	54.0	3.9	78.3	11.4
Paddock 11a	2/12/20	11.4	15.4	26.7	3.3	24.2	42.0	7.9	82.2	12.0
Paddock 16a	13/1/21	15.7	16.0	18.8	3.3	28.0	49.2	9.9	76.9	11.2
Paddock 9b	10/2/21	15.7	16.0	20.6	3.4	22.6	40.8	12.7	>85	12.5
Paddock A2	3/3/21	14.6	11.6	29.0	3.9	26.3	51.8	3.0	80.1	11.7
Paddock 10a	7/4/21	12.8	9.8	26.0	3.3	24.0	46.5	6.4	80.7	11.8
Paddock 19 new block	4/8/21	10.0	15.9	31.6	4.2	25.1	44.8	6.5	82.7	12.1
Paddock C2	6/10/21	9.4	10.7	22.5	3.6	28.0	51.5	7.1	78.4	11.4

* Test analytes which have occurred as outliers on the NIRS calibration are indicated by * and should be treated as an approximation only.