

# Westland Monitor Farm Project

**Weekly Update** as at week ending Wednesday 8th September 2021.

## CO Comment

The week leading up to this farm data collection saw the West Coast get a few good fine days which were appreciated by both people and animals on farm.

The monitor farms were able to capitalise on this fine weather by doing some maintenance with the Kowhiterangi monitor farm going gangbusters and getting their crop paddocks aerated, installing 15 new underground cables and carting topcoat for a new lane.

The Mawheraiti farm did the same by getting some new grass into their winter paddock. As of the 6<sup>th</sup> of September, Kowhiterangi monitor farm was doing 1.81 kg/ms/cow. Remember these guys are 3 in 2 milking which will have helped them to have the time to complete the other jobs they got done. That, and their excellent time management skills!

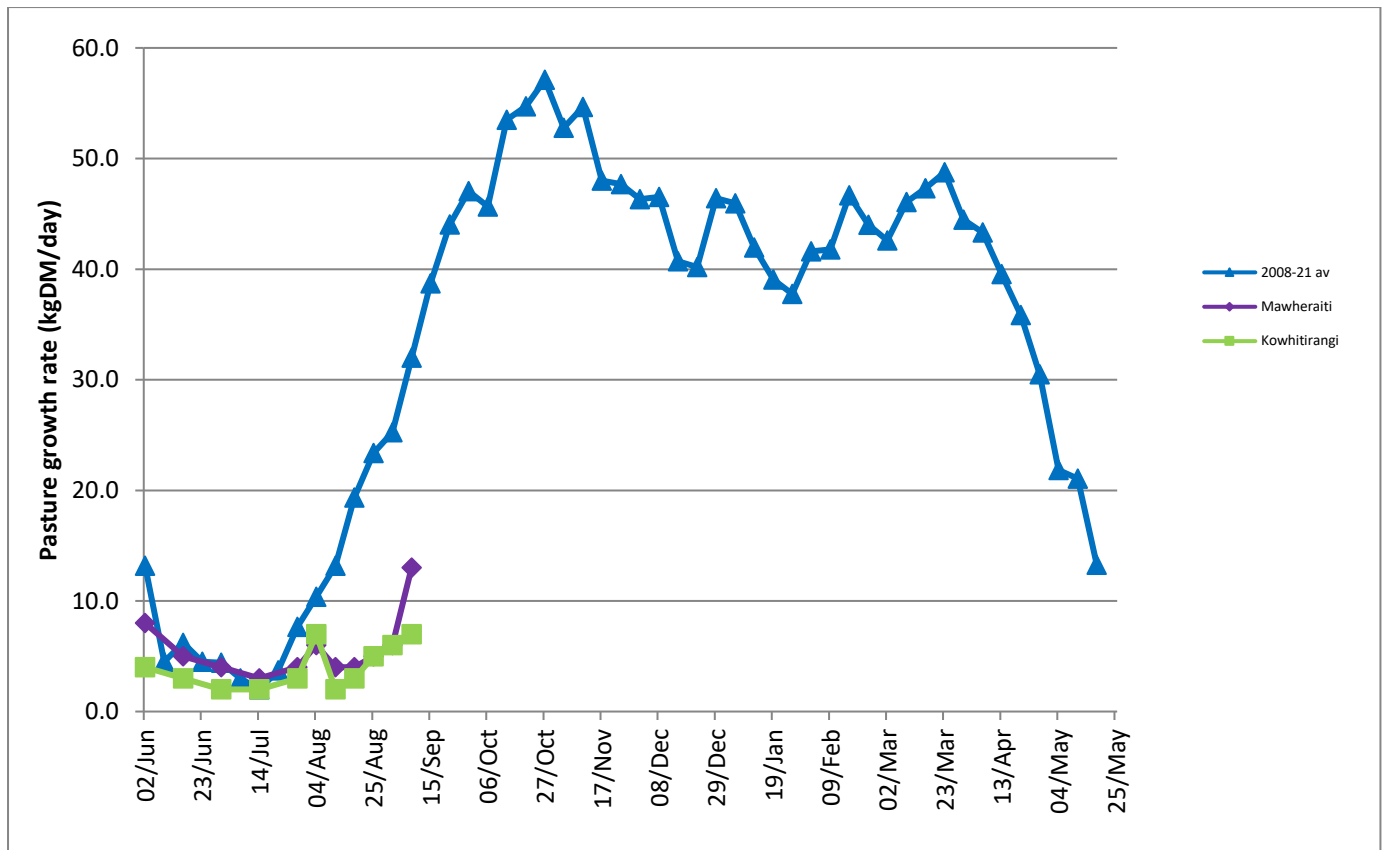
The Mawheraiti monitor farm has highlighted that they are starting to see a bit of Porina around the perimeter of their farm. A timely reminder to have a look around as awareness and early recognition of damage will avoid severe pasture loss and prolong pasture life. Porina are present in most pastures, but not always at damaging levels. Each moth can lay up to 3000 eggs which are scattered over the pasture surface, but most eggs and very young caterpillars do not survive. Caterpillars and the damage they cause are most noticeable from April until September. If you are having a look the caterpillars appear dirty white with grey back and a deep brown head.

## Farm Summary

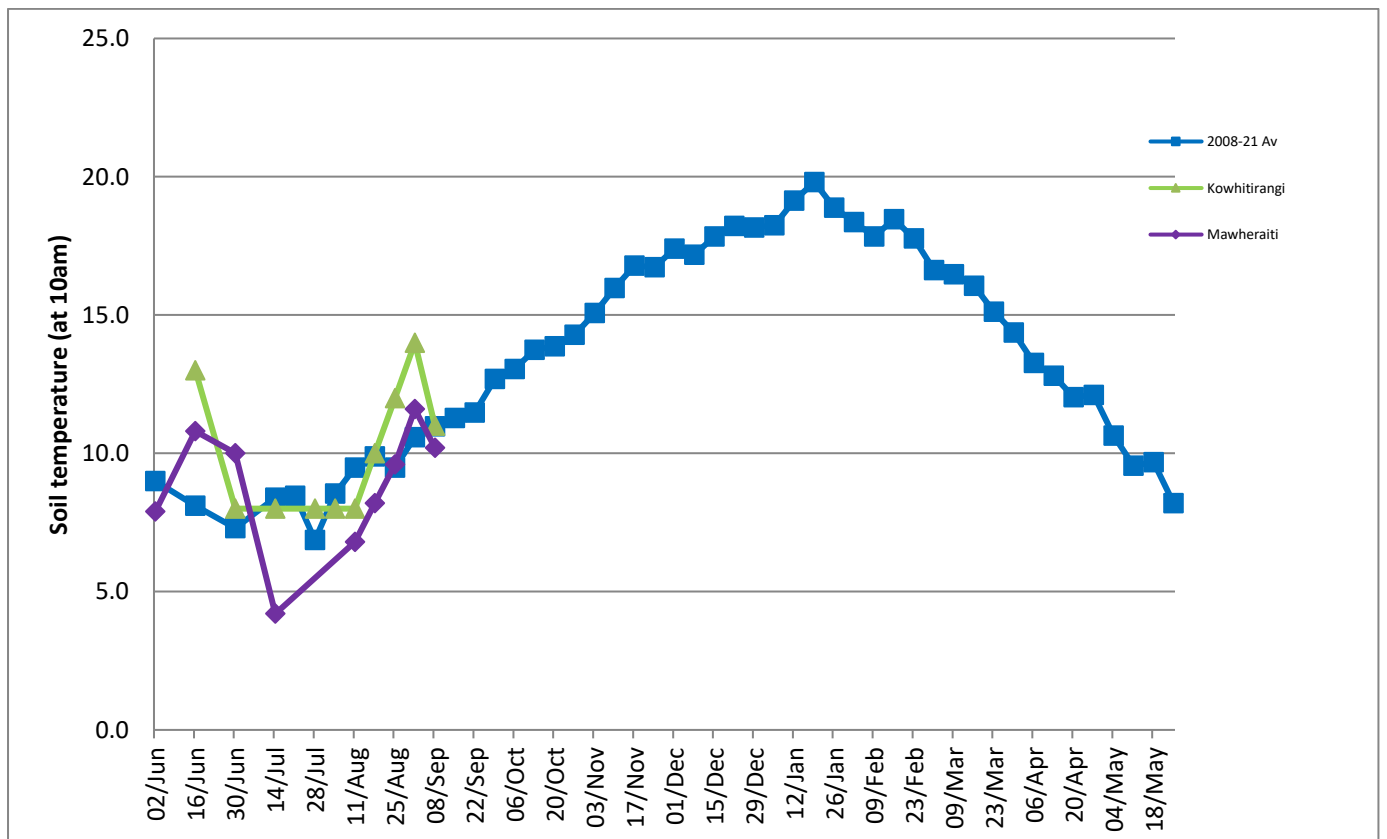
	Mawheraiti	Kowhitirangi
Average cover (kg DM/ha)	1981	1842
APC (1 September)	1964	1872
Rotation length (days)	53	40
Stocking rate		
Percentage in milk	81% calved	74% calved
Milksolids kg/cow	1.9	1.81
Milksolids kg/ha	3.2	2.3
MS/cow (season to date)	25	18
MS/ha (season to date)	62	51
N (kg/ha) year to date		20.6
Current N application rate kg N/ha		24.8
	2 August	4 August
DM%	13.1	15.9
Pasture ME	12.0	12.1
Pasture NDF	44.4	44.8
Pasture CP	25.2	31.6
Target Intake (kg DM/cow/d)	18	18
Supplement (kg/cow/day)	Mob 1 – 6.71	3.5
Soil temperature (°C)	10.2	11.0
Growth Rate (kg DM/day)	13	7
Rainfall	0	98
Conditions for farmwalk	Fine (just) and warm	Fine, but cold (snow low) and strong winds. Been a bit of rain
Notes:	Nice fine week. Quite bad porina around boundaries. Deb started feeding milk powder, extra 15-20 calves this year.	Still in lockdown. Went 3 and 2 milking 27th August. Have put 80kg Ammo on 100 ha. Not worrying about fixing crop paddocks until it is dry. Too cold to put in before October. Crop all utilised, Silage all used. Calving cows on grass and PKE. Feeding PKE to springers. 90 Replacements & 6 bull calves so far. Aerated crop paddocks. 15 underground gate cables done. Carted shingle for new lane. Weather was good and fine.

NB: pasture quality data are for 1 sample collected from each farm.

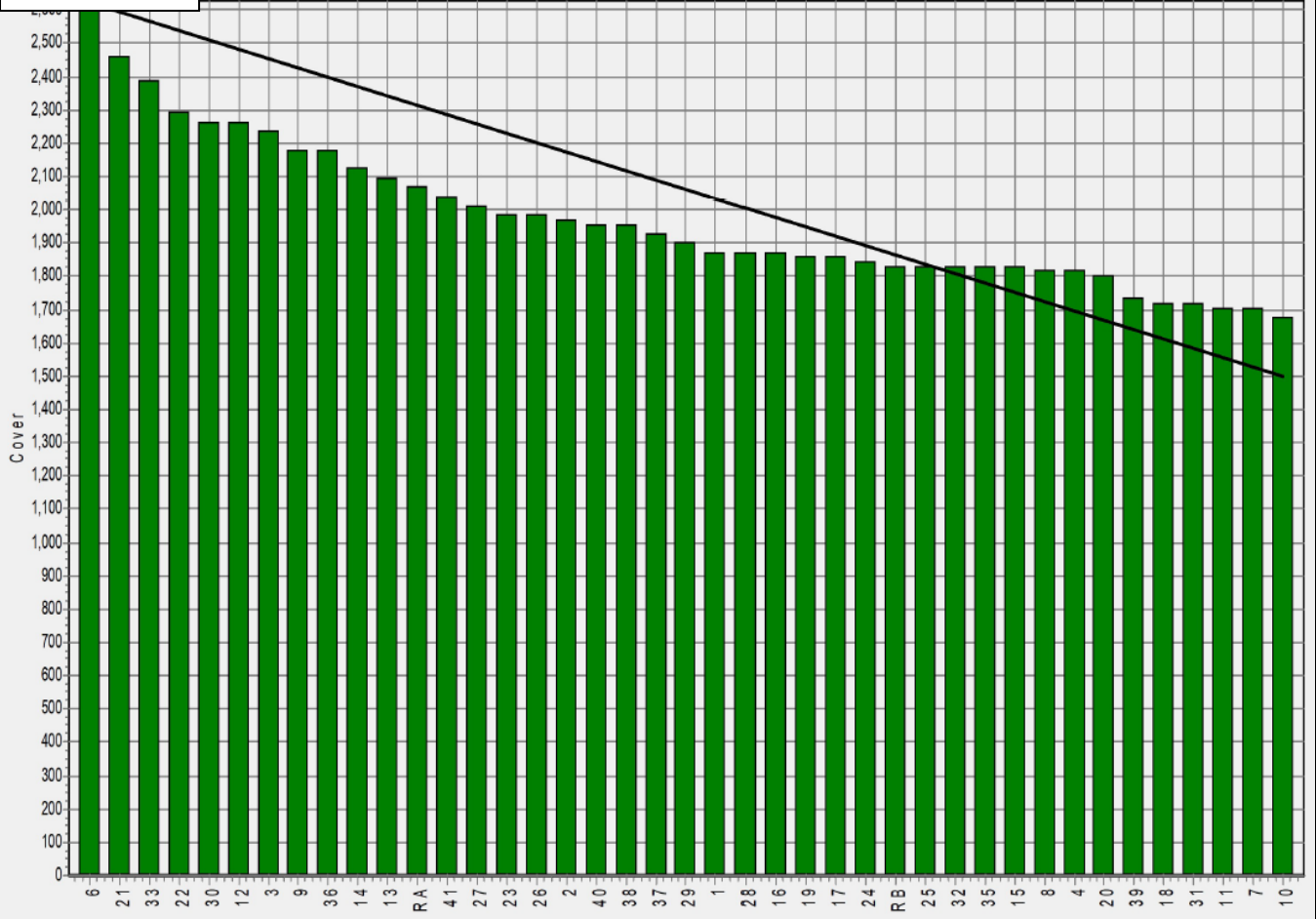
### Weekly Pasture Growth Rates



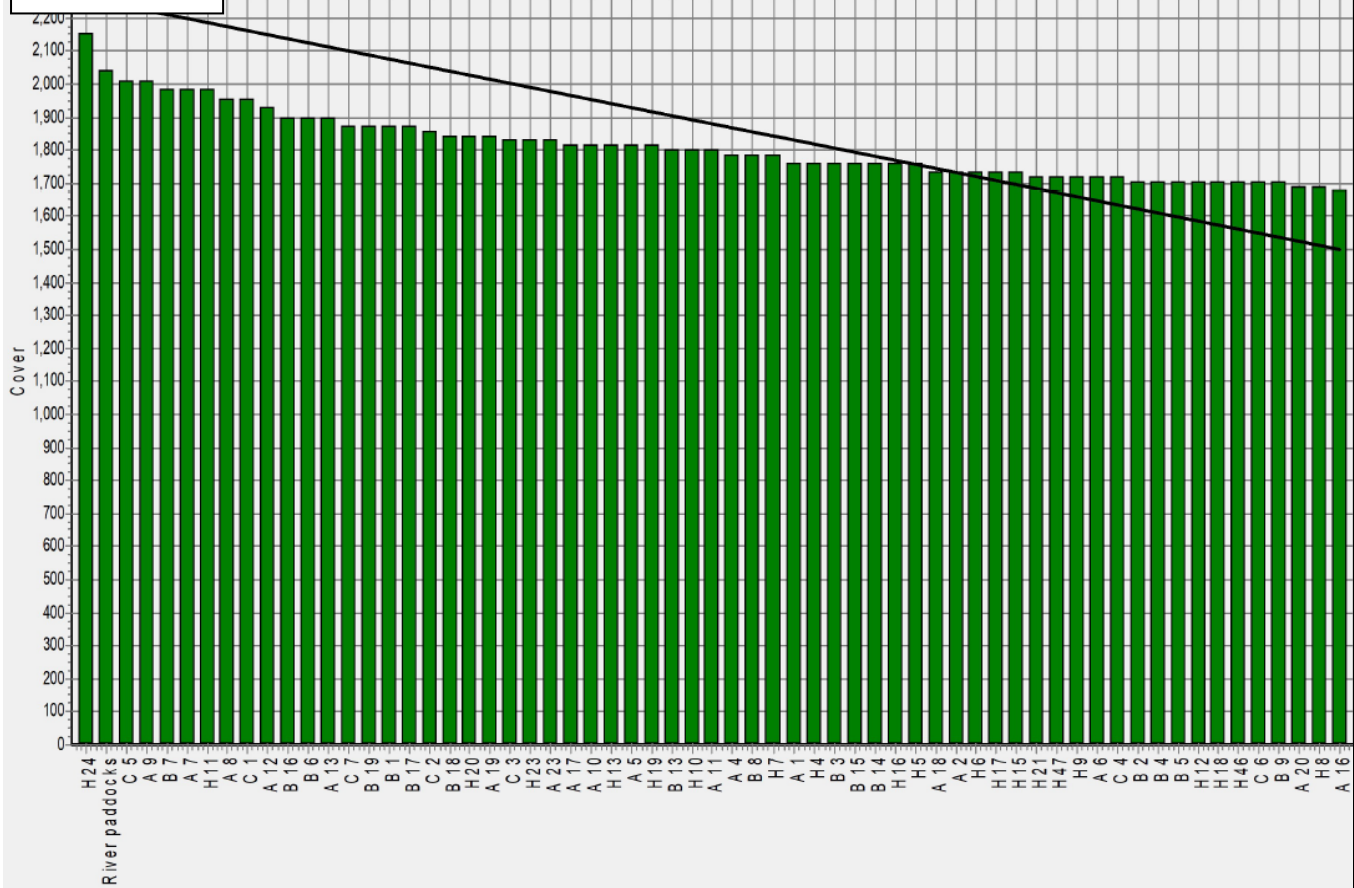
### Weekly Soil Temperature



### Mawheraiti



### Kowhitirangi





# Kowhitirangi

Description	Date	RPM	% DM	% Prot	% Lipid	% ADF	% NDF	Sol Sugar	OMD %	MJME /kg
Paddock 3c	5/8/20	10.2	11.7	30.9	4.3	23.5	45.9	7.1	81.3	11.9
Paddock 4a	2/9/20	11.8	17.3	25.8	4.2	21.5	42.3	12.0	>85	>12.7
Paddock 1	14/10/20	9.7	12.9	31.7	4.0	23.9	49.0	6.8	83.2	12.1
Paddock 19b	4/11/20	11.8	10.9	27.6	3.6	27.4	54.0	3.9	78.3	11.4
Paddock 11a	2/12/20	11.4	15.4	26.7	3.3	24.2	42.0	7.9	82.2	12.0
Paddock 16a	13/1/21	15.7	16.0	18.8	3.3	28.0	49.2	9.9	76.9	11.2
Paddock 9b	10/2/21	15.7	16.0	20.6	3.4	22.6	40.8	12.7	>85	12.5
Paddock A2	3/3/21	14.6	11.6	29.0	3.9	26.3	51.8	3.0	80.1	11.7
Paddock 10a	7/4/21	12.8	9.8	26.0	3.3	24.0	46.5	6.4	80.7	11.8
Paddock 19 new block	4/8/21	10.0	15.9	31.6	4.2	25.1	44.8	6.5	82.7	12.1

\* Test analytes which have occurred as outliers on the NIRS calibration are indicated by \* and should be treated as an approximation only.