

# Westland Monitor Farm Project

**Weekly Update** as at week ending Wednesday 10th January 2018

## CO comment

This past week has seen some significant rain for all areas on the West Coast. It is timely to remind those who have been in a state of drought that even though some rain has fallen, it would be wise to stick to your current plan. Be prepared for the weather to stay drier than normal. We will be in a state of 'catch up' for some time and strict control will be required to achieve on farm targets from now and through winter. Be mindful that if the dry weather does continue through summer and into autumn, the risk of porina damage is likely to be higher than usual. Having porina larvae munching through what's left of the pasture over winter will not be helpful.

For everyone, January is often a time of variable growth rates so ensure pasture cover is monitored regularly. Use a feed wedge to identify any deficits or surpluses and use supplements to fill any genuine feed shortages. Make sure you have reviewed or made a plan for the late lactation period. Being proactive and stopping the feeding of supplements as soon as available pasture meets feed demand will ensure you receive the best return from any added supplement.

Establishing a Body condition score profile for the herd is important. If you do this now you will have the confidence to keep milking better conditioned cows and it gives an idea of how many cows may require an alternative. Having this information updated periodically and on hand can enhance the success of any autumn/winter preparation and targets.

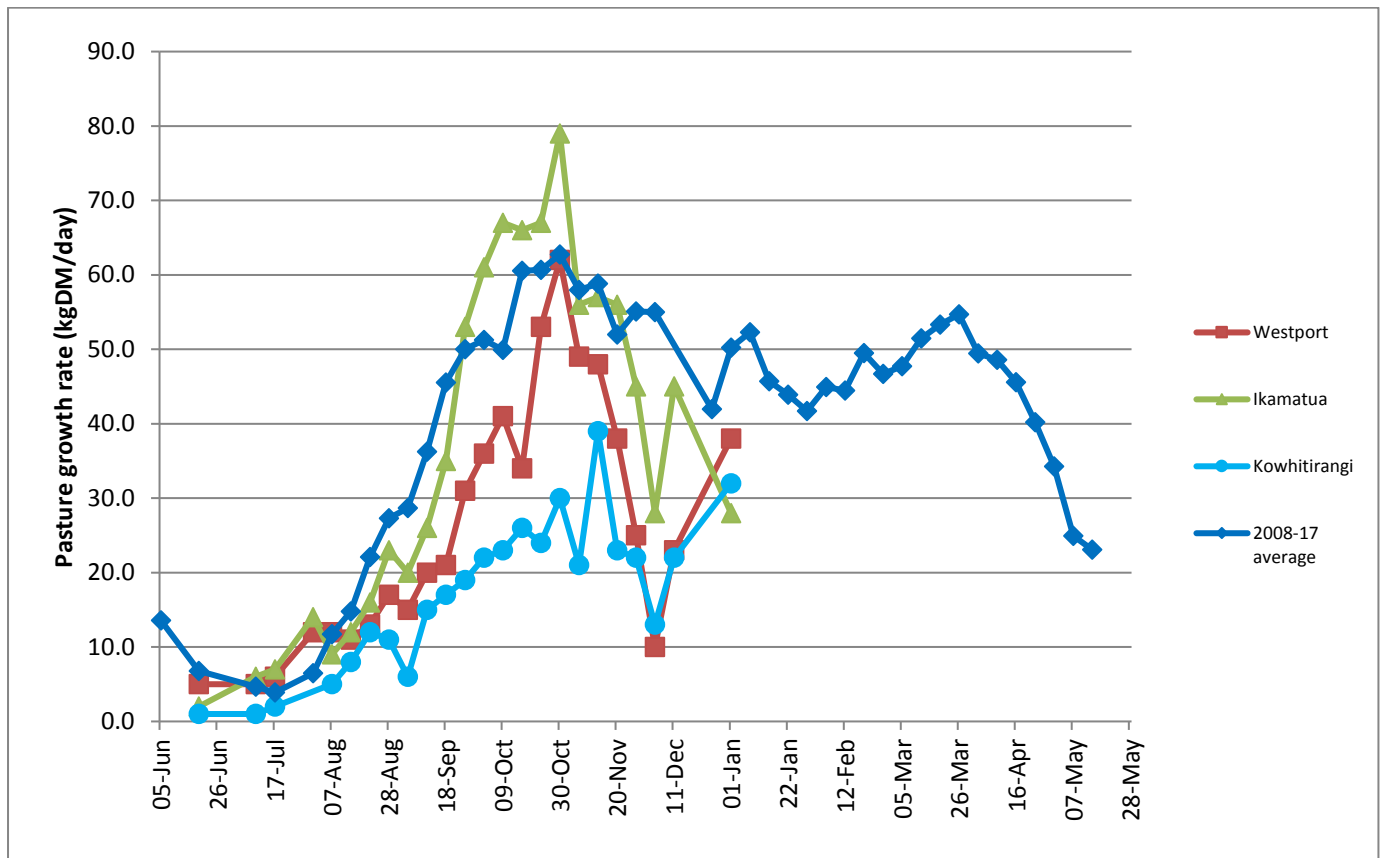
## Farm Summary

	Westport	Ikamatua	Kowhitirangi
Average cover (kg DM/ha)	1905	1943	1946
APC (3 January)	1834	1952	1899
Rotation length (days)	22	20	26
Stocking rate	2.9	2.7	2.4
Percentage in milk	100	100	100
Milksolids kg/cow	1.71	1.91	1.50
Milksolids kg/ha	4.9	5.2	3.3
MS/cow (season to date)	190	271	136
MS/ha (season to date)	556	729	324
N (kg/ha) year to date	93	101	60
Current N application rate kg N/ha	20	20	None
	4 Dec	5 Dec	6 Dec
DM%	21.3	17.7	19.1
Pasture ME	11.6	12.7	12.4
Pasture NDF	57.3	46.7	55.1
Pasture CP		28.8	
Target Intake (kg DM/cow/d)	18	18	18
Supplement (kg/cow/day)	2	8	0
Soil temperature (°C)	20	19.1	18

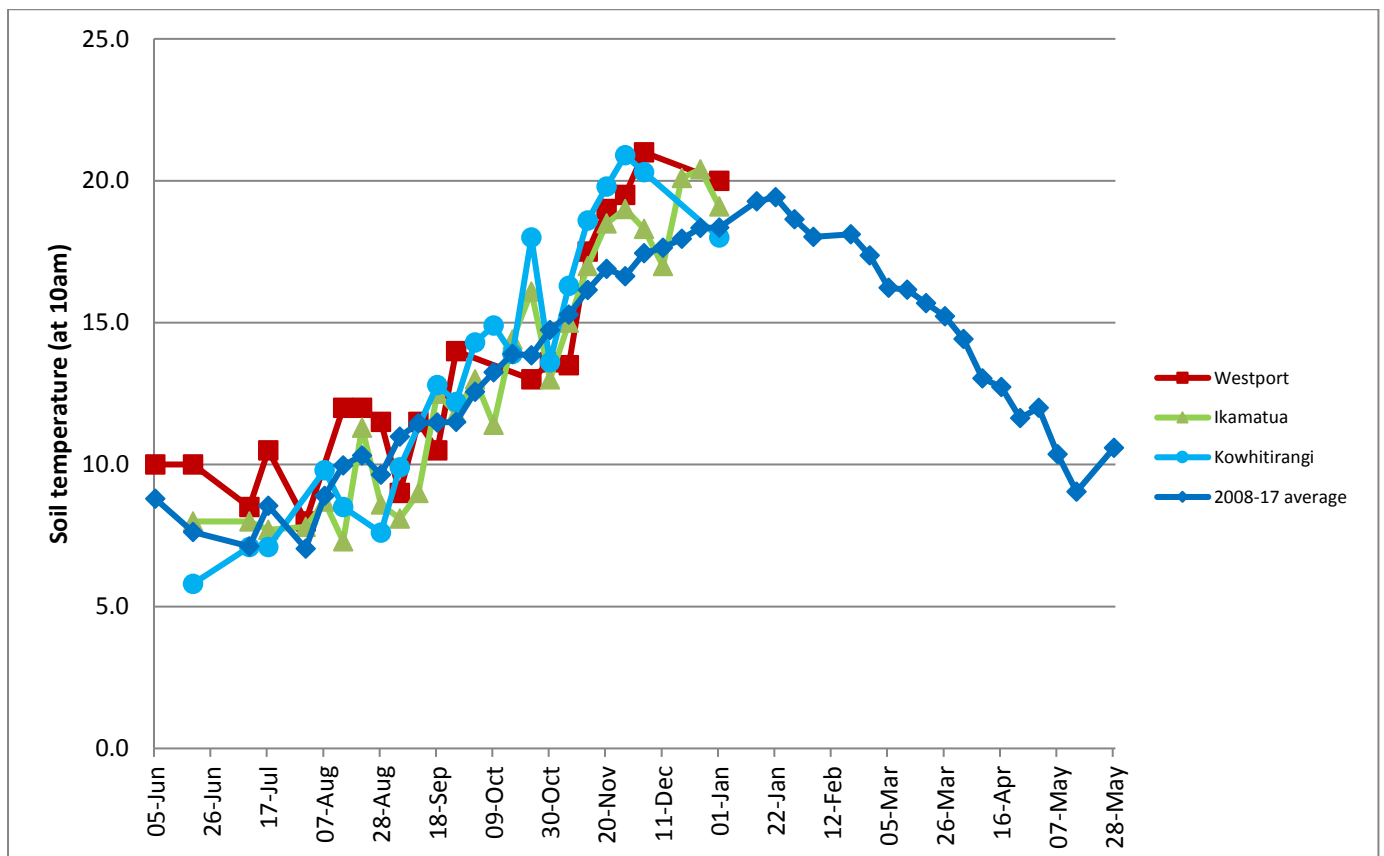
Growth Rate (kg DM/day)	38	28	32
Rainfall	8	12	58
Conditions for farmwalk	Hot and fine; no sign of rain	Few spots of rain; overcast and warm	Heavy rain
Comments			

NB: pasture quality data are for 1 sample collected from each farm

## Weekly Pasture Growth Rates

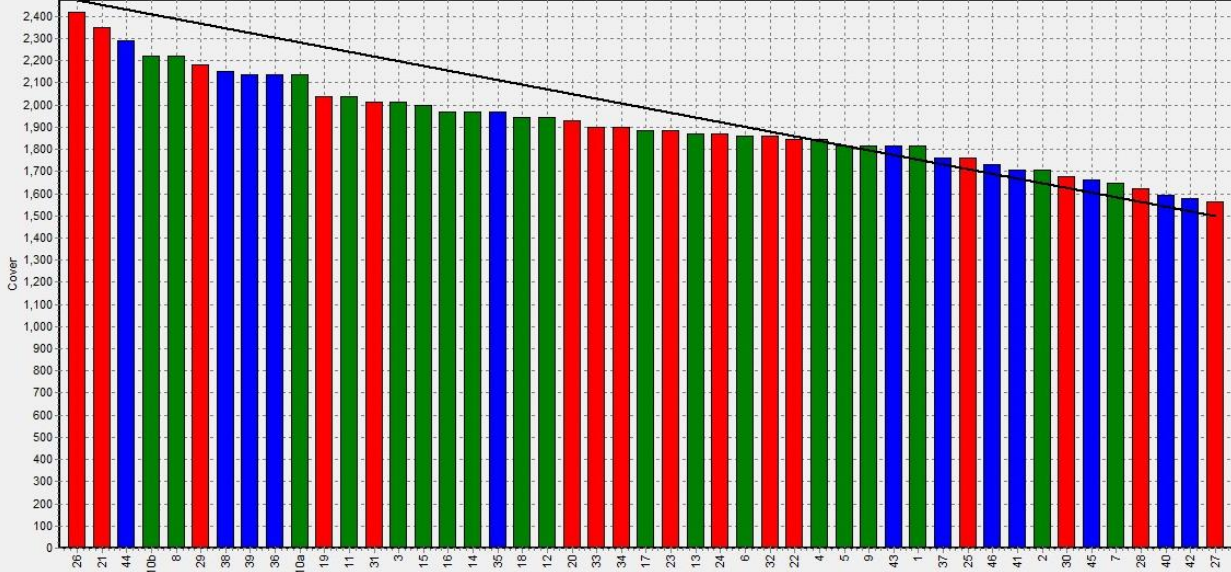


## Weekly Soil Temperature



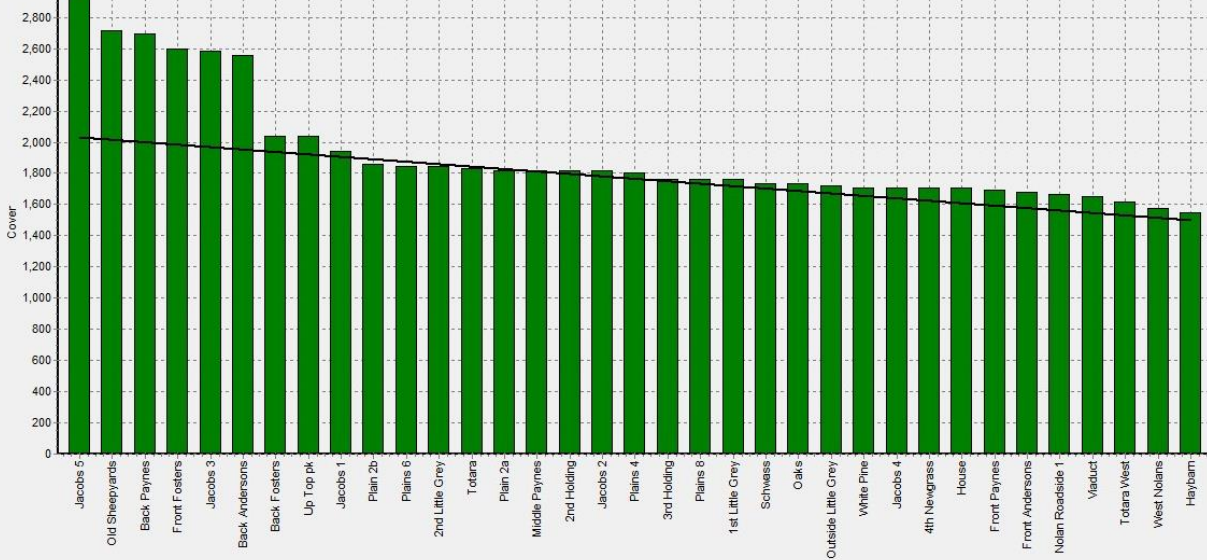
### Westport

Farm Name:- ADRIAN & CHERYL GALLAGHER  
 Date Read :- 8/01/2018  
 Average Cover :- 1905 Kg DM/Ha  
 Average Growth :- 38 Kg DM/Ha/Day



### Ikamatua

Farm Name:- ANDREW\_NIKI\_MIRFIN  
 Date Read :- 9/01/2018  
 Average Cover :- 1943 Kg DM/Ha  
 Average Growth :- 28 Kg DM/Ha/Day



### Kowhitirangi

Farm Name:- TANE & RACHEL LITTLE  
 Date Read :- 10/01/2018  
 Average Cover :- 1946 Kg DM/Ha  
 Average Growth :- 32 Kg DM/Ha/Day

