

Westland Monitor Farm Project

Weekly Update as at week ending Wednesday 17th January 2018

CO comment

Mycoplasma bovis is a bacterial disease and is commonly found in cattle all over the world, including in Australia, but this is the first detection of it in New Zealand. It does not infect humans and presents no food safety risk. Although it does lead to serious conditions in cattle and therefore constitutes an animal welfare and productivity issue. It spreads from animal to animal through close contact. Between farms it spreads through the movement of animals that are infected but not showing symptoms. It is also potentially spread on contaminated equipment and the feeding of untreated milk to calves. It is not windborne.

While some of the conditions can be treated, affected cattle will always be carriers of the disease. The disease does not affect sheep or cause illness in goats although it is thought goats could carry and transmit it. It can present itself as untreatable mastitis in dairy and beef cows; severe pneumonia in up to 30% of infected calves, starting as a hacking cough; ear infections in calves; abortions and/or swollen joints and lameness (severe arthritis/synovitis) in all ages of cattle. If stock show unusual levels of mastitis, abortions or present with arthritis or pneumonia, contact your vet.

There are some simple steps you can take on farm to protect your animals from contracting *M. bovis*.

- Check your boundary fences are secure
- Put in double fencing at least two metres apart to stop nose to nose contact between you and your neighbour's stock.
- Always complete your NAIT records and make sure if you have had movement over the last month they are correctly recorded. Knowing where your cows have been is crucial to understanding and preventing the spread of disease.

For more information on the disease and steps you can take to protect your farm visit <https://www.dairynz.co.nz/animal/cow-health/mycoplasma-bovis/>

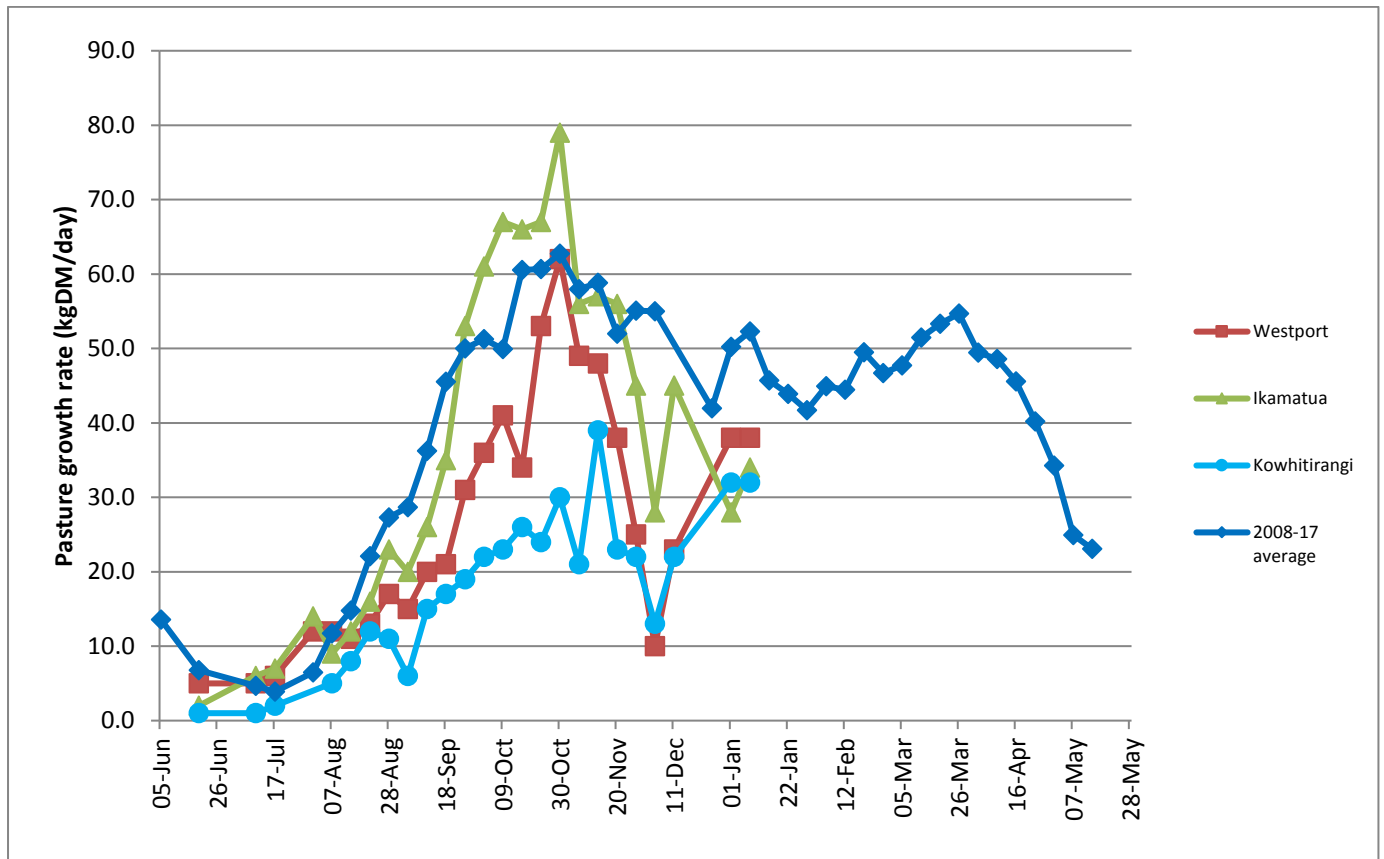
Farm Summary

	Westport	Ikamatua	Kowhitirangi
Average cover (kg DM/ha)	1994	1952	1977
APC	1905	1943	1946
Rotation length (days)	22	20	
Stocking rate	2.9	2.7	2.4
Percentage in milk	100	100	100
Milksolids kg/cow	1.67	1.88	
Milksolids kg/ha	4.8	5.1	
MS/cow (season to date)	200	284	
MS/ha (season to date)	585	764	
N (kg/ha) year to date	98	101	
Current N application rate kg N/ha	20	None	
DM%			
Pasture ME			
Pasture NDF			
Pasture CP			
Target Intake (kg DM/cow/d)	18	18	
Supplement (kg/cow/day)	2.5	8	

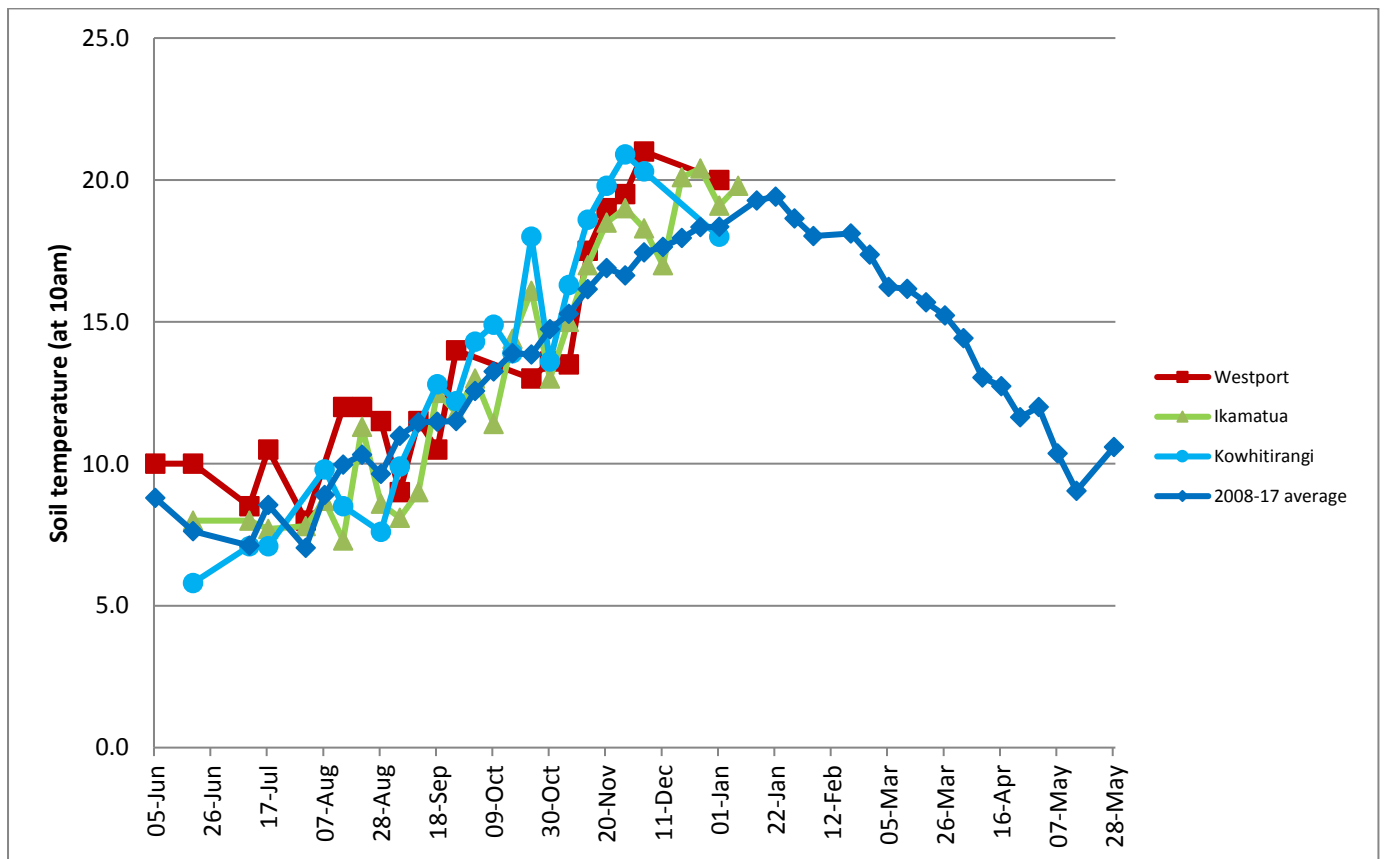
Soil temperature (°C)		19.8	
Growth Rate (kg DM/day)	38	34	32
Rainfall	112	111	
Conditions for farmwalk			
Comments			

NB: pasture quality data are for 1 sample collected from each farm

Weekly Pasture Growth Rates



Weekly Soil Temperature



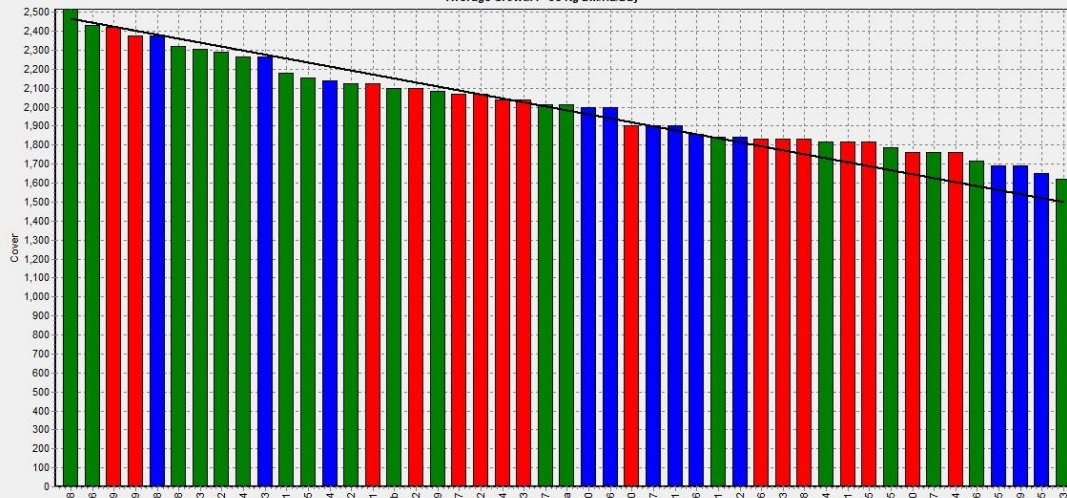
Westport

Farm Name:- ADRIAN & CHERYL GALLAGHER

Date Read :- 15/01/2018

Average Cover :- 1994 Kg DM/Ha

Average Growth :- 38 Kg DM/Ha/Day



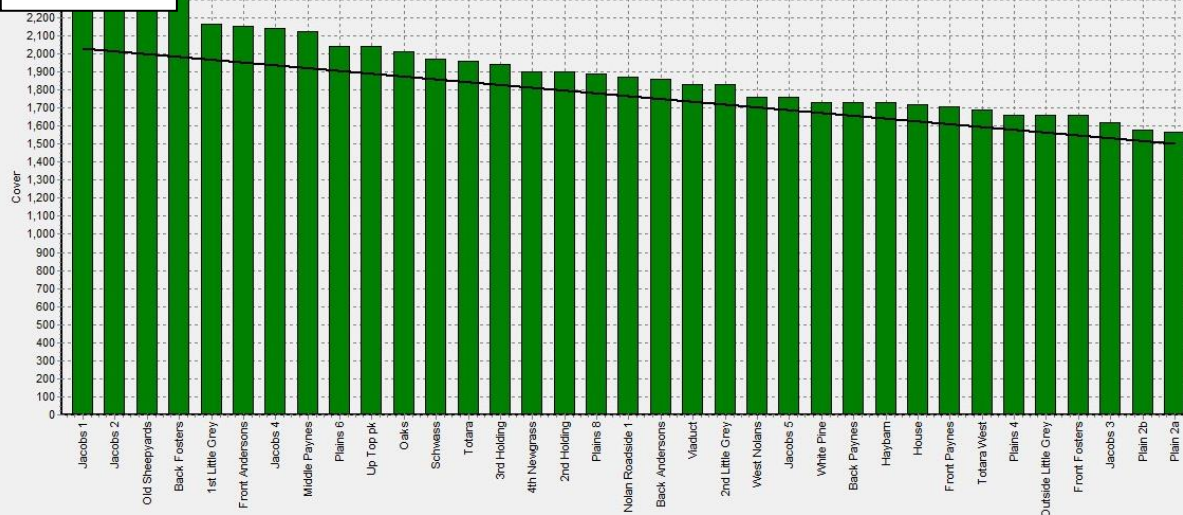
Ikamatua

Farm Name:- ANDREW_NIKI_MIRFIN

Date Read :- 16/01/2018

Average Cover :- 1952 Kg DM/Ha

Average Growth :- 34 Kg DM/Ha/Day



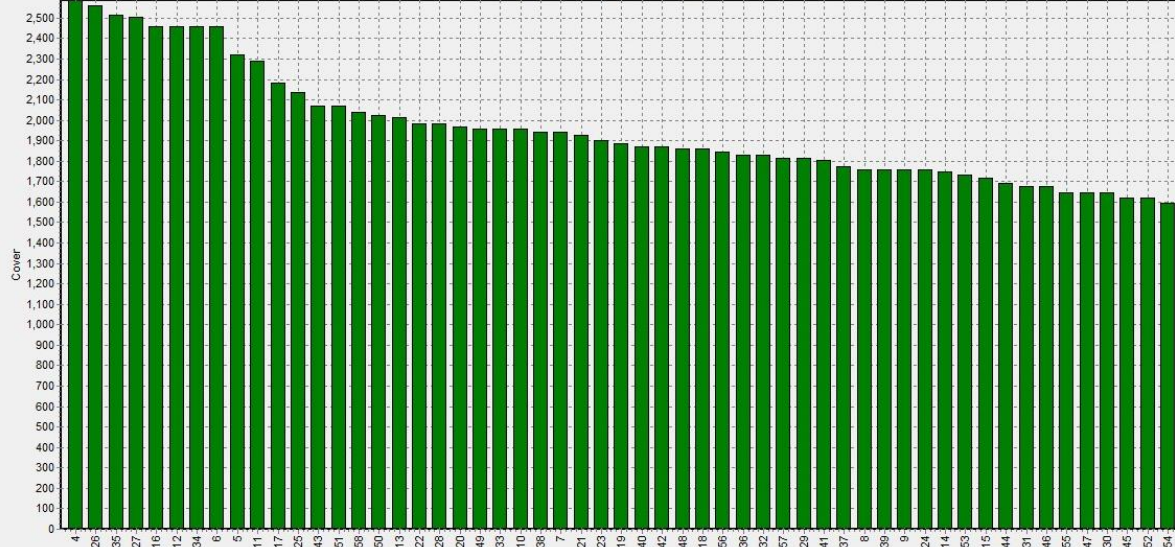
Kowhitirangi

Farm Name:- TANE & RACHEL LITTLE

Date Read :- 17/01/2018

Average Cover :- 1977 Kg DM/Ha

Average Growth :- 32 Kg DM/Ha/Day



Pasture Quality

NOTE: We sample the paddocks immediately in front of the milkers, to height of 3.5cm (7 clicks on the rising plate meter). The RPM data in the table is the pre-grazing clicks recorded on the day of sampling.

Westport

Description	Date	RPM	% DM	% Prot	% Lipid	% ADF	% NDF	Sol Sugar	OMD %	MJME /kg
42	5/6/2017	10.0	16.7	37.8	5.4	20.4	43.6	5.1	>85	>12.7
44	3/8/2017	14.8	20.0	27.3	5.2	22.9	46.4	8.0	84.6	12.4
4	4/9/2017	10.3	15.4	31.9	5.3	22.4	42.2	5.9	88.5	12.9
26	3/10/2017	13.8	11.8	30.1	3.8	23.7	49.8	5.5	91.2	>12.7
40	30/10/2017	11.4	13.5	26.9	10.9	40.0	6.4			11.8
3	4/12/2017	11.7	21.3	17.9	3.4	30.0	57.3.	11.7	79.5	11.6

Ikamatua

Description	Date	RPM	% DM	% Prot	% Lipid	% ADF	% NDF	Sol Sugar	OMD %	MJME/kg
Haybarn	6/6/2017	14.8	16.3	29	5.4	19.6	37.4	12.7	>85	12.7
Totara east	3/8/2017	10.3	15.7	26.9	5.1	20.2	35.8	16.7	>85	>12.7
Totara west	3/8/2017	10.9	17.4	24.4	5.1	20.8	37.2	19.9	>85	>12.7
Plain 5	3/8/2017	12.2	17.3	24.5	4.7	20.5	41.4	16.7	>85	>12.7
Viaduct	3/8/2017	13.6	16.4	22.8	4.6	21.8	37.9	21.3	>85	>12.7
Mid-Payne	3/8/2017	15.8	16.7	22.2	4.7	23.7	41	16.1	80.8	11.8
Jacobs 2	3/8/2017	10.3	16.7	27	5.5	21.1	38	13.6	>85	12.5
Front Payne	5/9/2017	8.8	15.7	25.0	5.0	26.4	41.0	8.6	81.1	11.8
Schwass	4/10/2017	16.4	13.0	29.0	5.0	21.4	44.5	10.2	90.3	>12.7
Jacobs 2	31/10/2017	16.6	16.2	26.8	10.0	39.7	10.6			12.6
Back Foster	5/12/2017	15.9	17.7	28.8	4.8	22.9	46.7	11.6	87.1	12.7

