

# Westland Monitor Farm Project

Weekly Update as at week ending Wednesday 3rd January 2018

## CO comment

Hopefully everyone has managed to take a little break over the Christmas, New Year period. The West Coast is looking like a game of two halves at present, with the drought somewhat broken in the South and those further North still feeling the heat, literally.

Cow condition will be a factor to be considered by all though. We must preserve this as we have another 8-10 weeks of this year available before body condition score thresholds will start becoming important for next seasons production. Vulnerable cows (young, old etc) will be the first to show signs of BCS loss. Consider a change in milking frequency for this group of animals. If this is not an option, make sure that passengers in the herd aren't eating feed that could be prioritised for these animals. Identify and remove culls to preserve feed for the 'core' milking herd. If considering moving your pregnancy testing forward to identify empty cows it is important to discuss this with the vets first.

Planning for winter is paramount. With other regions suffering from dry weather, demand for supplements has gone up. Many currently have less winter supplements on hand at present and will need to have a plan in place as to how a potential winter feed shortage can be mitigated. Keep in touch with suppliers to ensure the availability of winter feed, if needed.

Taking a bit of time to reassess the plan (or make one) for the coming months is time well spent.

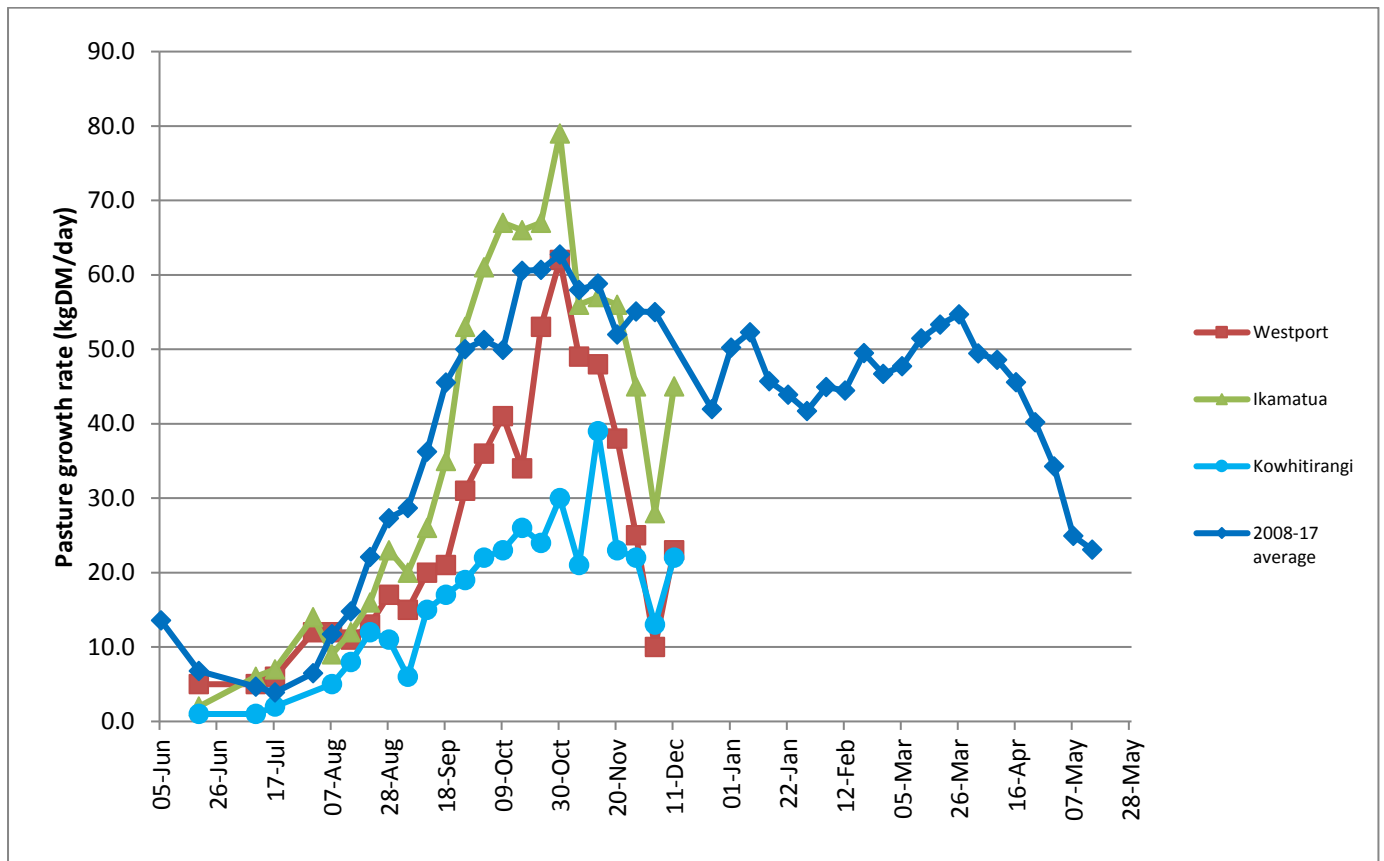
## Farm Summary

	Westport	Ikamatua	Kowhitirangi
Average cover (kg DM/ha)	1834	1952	1899
APC			
Rotation length (days)	22	30	26
Stocking rate	2.9	2.7	2.4
Percentage in milk	100	100	100
Milksolids kg/cow	1.75	1.94	1.58
Milksolids kg/ha	5.0	5.3	3.5
MS/cow (season to date)	180	257	126
MS/ha (season to date)	527	692	
N (kg/ha) year to date	87	95	60
Current N application rate kg N/ha	None	None	None
	4 Dec	5 Dec	6 Dec
DM%	21.3	17.7	19.1
Pasture ME	11.6	12.7	12.4
Pasture NDF	57.3	46.7	55.1
Pasture CP		28.8	
Target Intake (kg DM/cow/d)	18	18	18
Supplement (kg/cow/day)	2.7	11	0
Soil temperature (°C)	21	20.4	19.6
Growth Rate (kg DM/day)	-	-	-
Rainfall	3	33	40

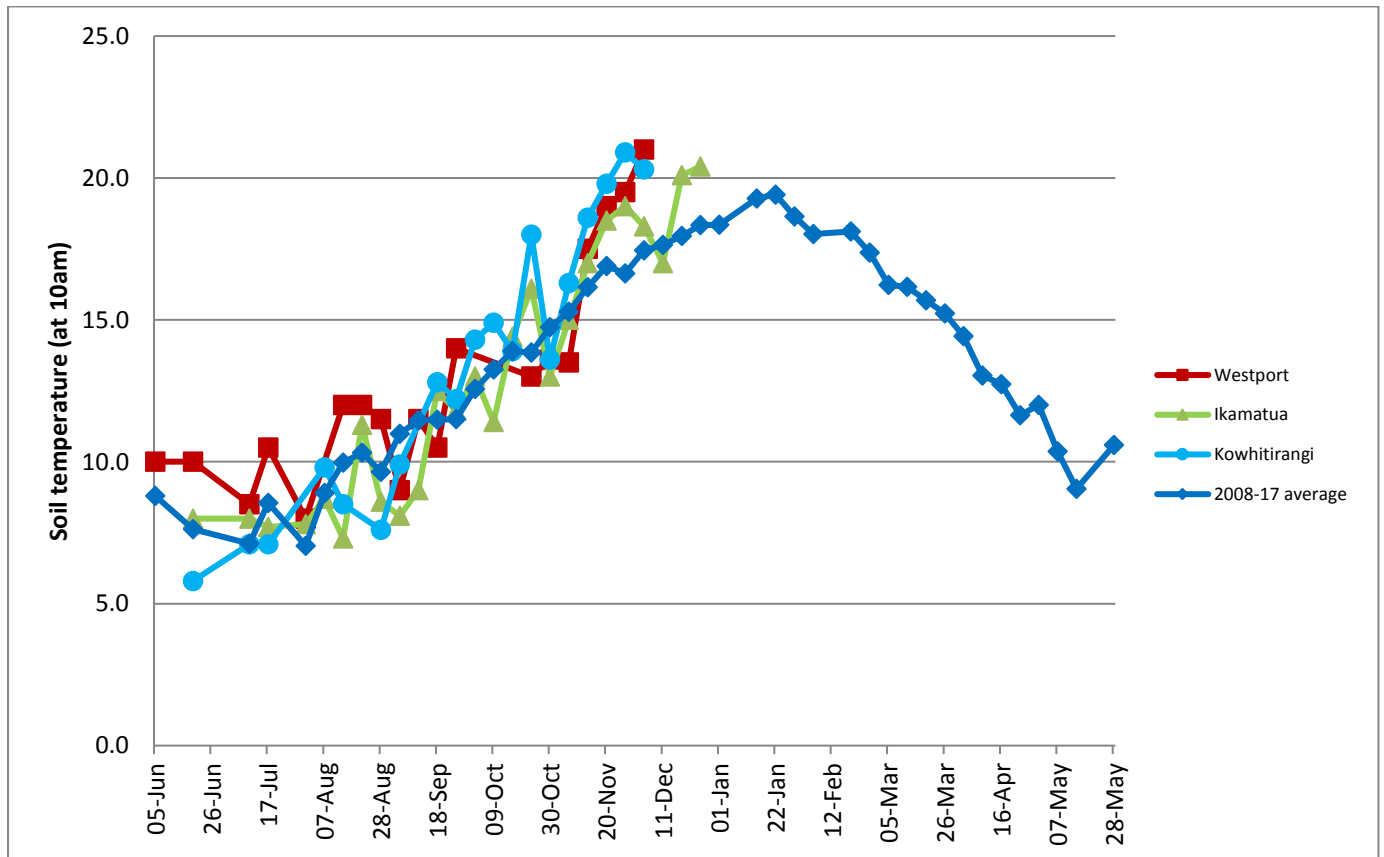
Conditions for farmwalk	Hot and fine; been a little rain, topping all paddocks	Hot and fine, irrigation saving farm	Very hot, but farm green with just enough rain
Comments			

NB: pasture quality data are for 1 sample collected from each farm

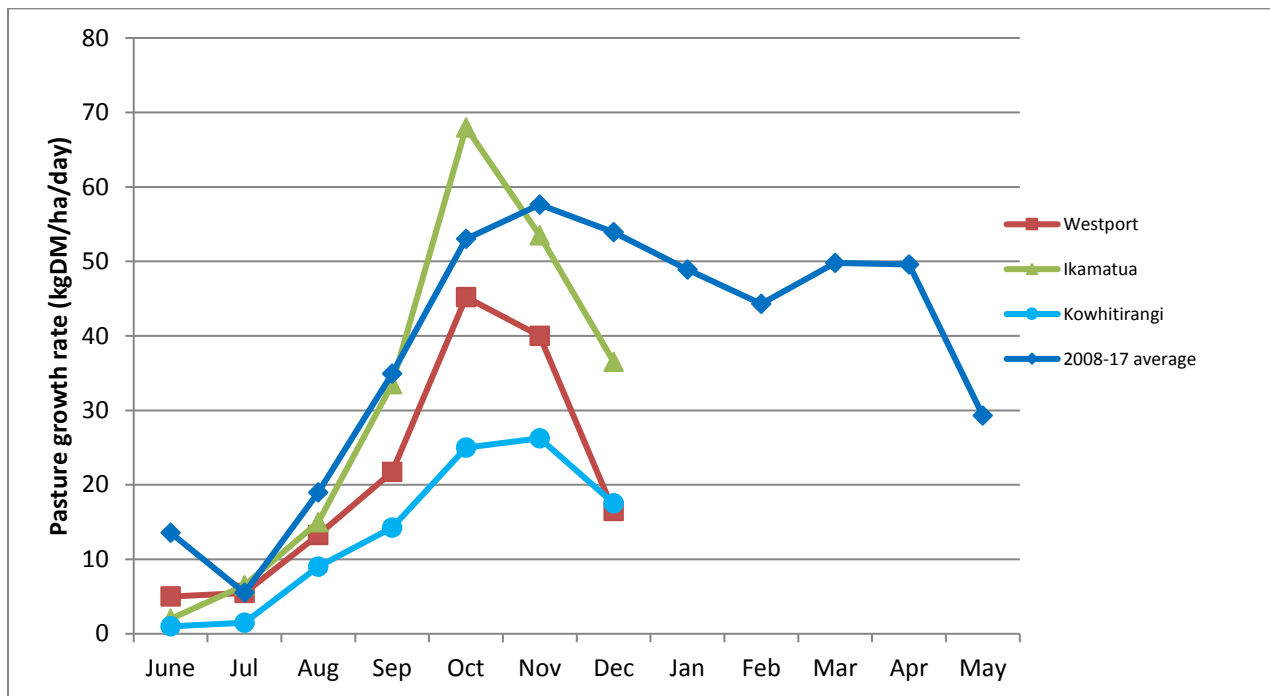
## Weekly Pasture Growth Rates



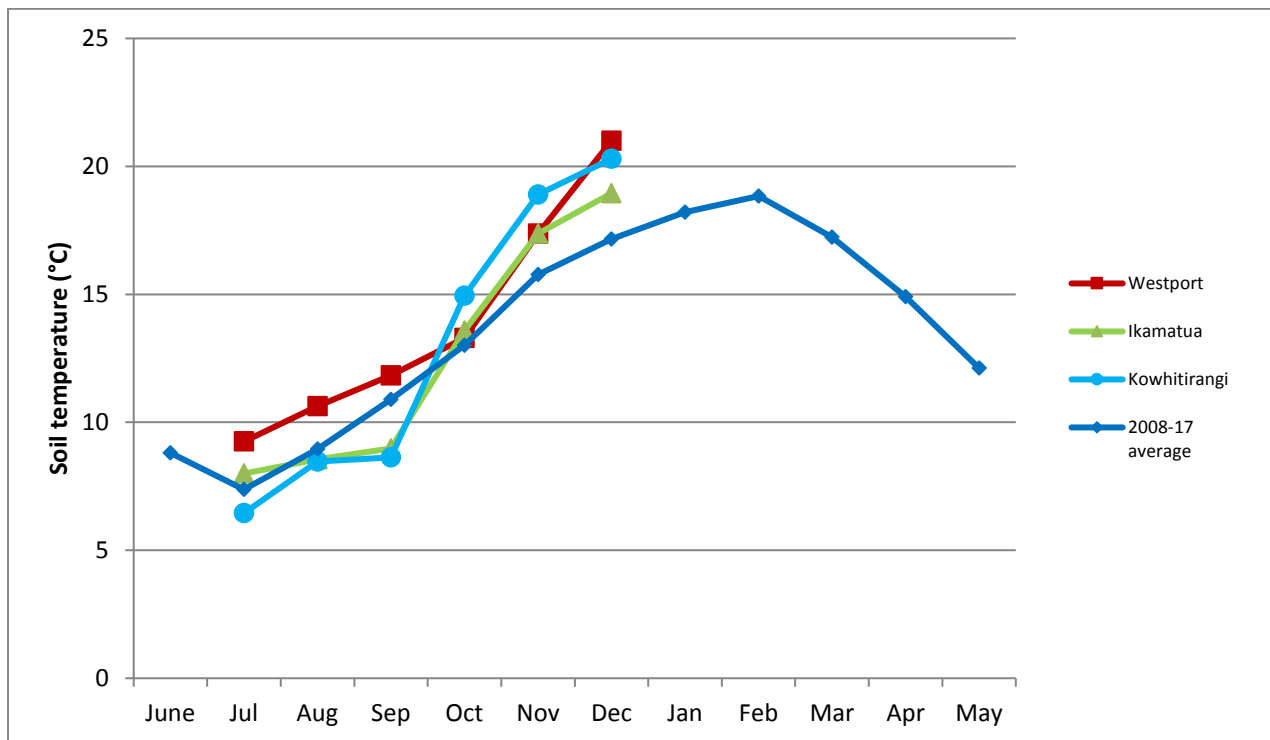
## Weekly Soil Temperature



## Monthly Pasture Growth Rates

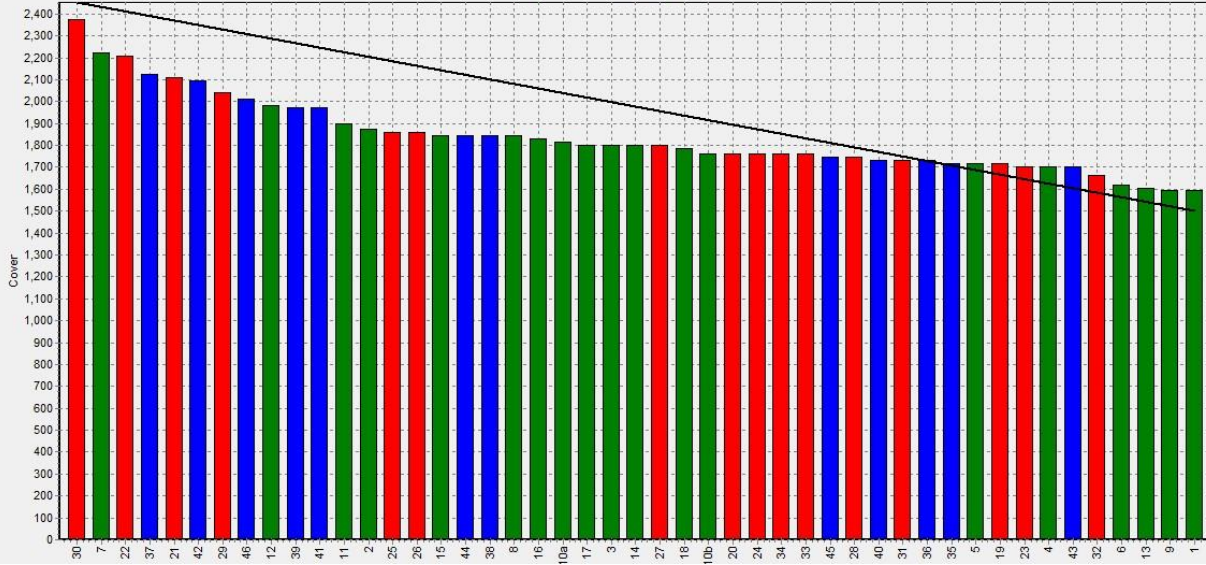


## Monthly Soil Temperature



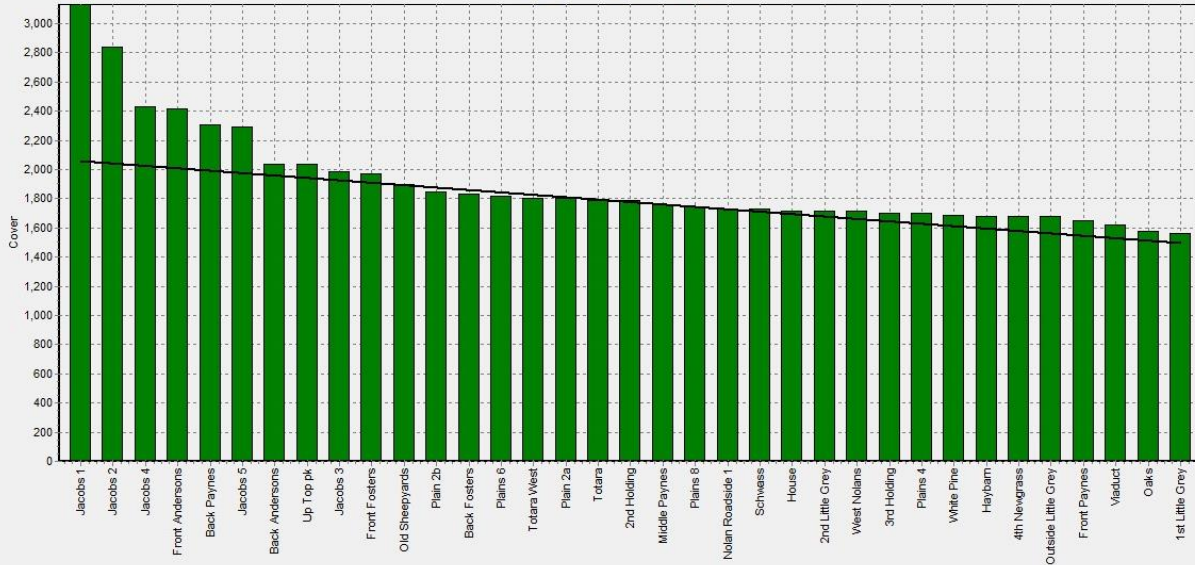
## Westport

Farm Name:- ADRIAN & CHERYL GALLAGHER  
 Date Read :- 1/01/2018  
 Average Cover :- 1834 Kg DM/Ha  
 Average Growth :- 0 Kg DM/Ha/Day



## Ikamatua

Farm Name:- ANDREW\_NIKI\_MIRFIN  
 Date Read :- 2/01/2018  
 Average Cover :- 1952 Kg DM/Ha  
 Average Growth :- 0 Kg DM/Ha/Day



## Kowhitirangi

Farm Name:- TANE & RACHEL LITTLE  
 Date Read :- 3/01/2018  
 Average Cover :- 1899 Kg DM/Ha  
 Average Growth :- 0 Kg DM/Ha/Day

