

Westland Monitor Farm Project

Weekly Update 1 September 2016

CO comment

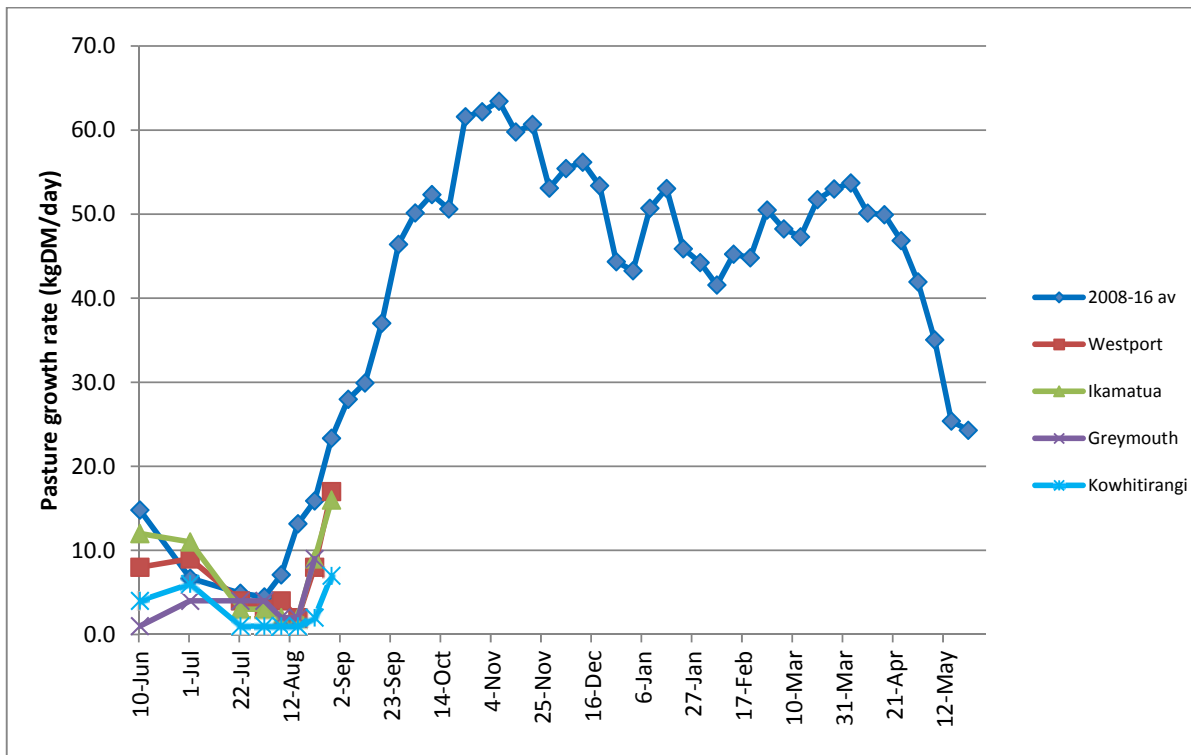
This spring has been nothing if not inconsistent and challenging. For many, the majority of heifer calves to be retained as replacements have been born and are now in the rearing facilities. It's timely to remind ourselves what's important if we want these calves to get off to the best possible start. Calves must receive 2 – 3 litres of colostrum within 6 hours of birth. This has to be seen as a given. Once they've had this colostrum there is little to be gained from leaving the calf with the cow beyond 24 hours. Warm, dry, draught-free shelter is the next key, with fresh water and good quality hay made available within the first few days after birth. Feeding twice daily initially is important for the first few weeks, then they can be moved on to once daily feeds with a specialty calf meal available. It will be tempting to cut this cost in lower payout years, but it is important to balance this decision with the fact that these heifers are the future of your herd and cutting corners now could mean lower weaning and mating weights later on. The key is to make sure the crude protein of the supplement is around 20%. A combination of milk and meal is the best option as calves fed on larger quantities of milk will have slower rumen development. For further information have a look at <http://www.dairynz.co.nz/animal/calves/calf-care/>.

Farm Summary

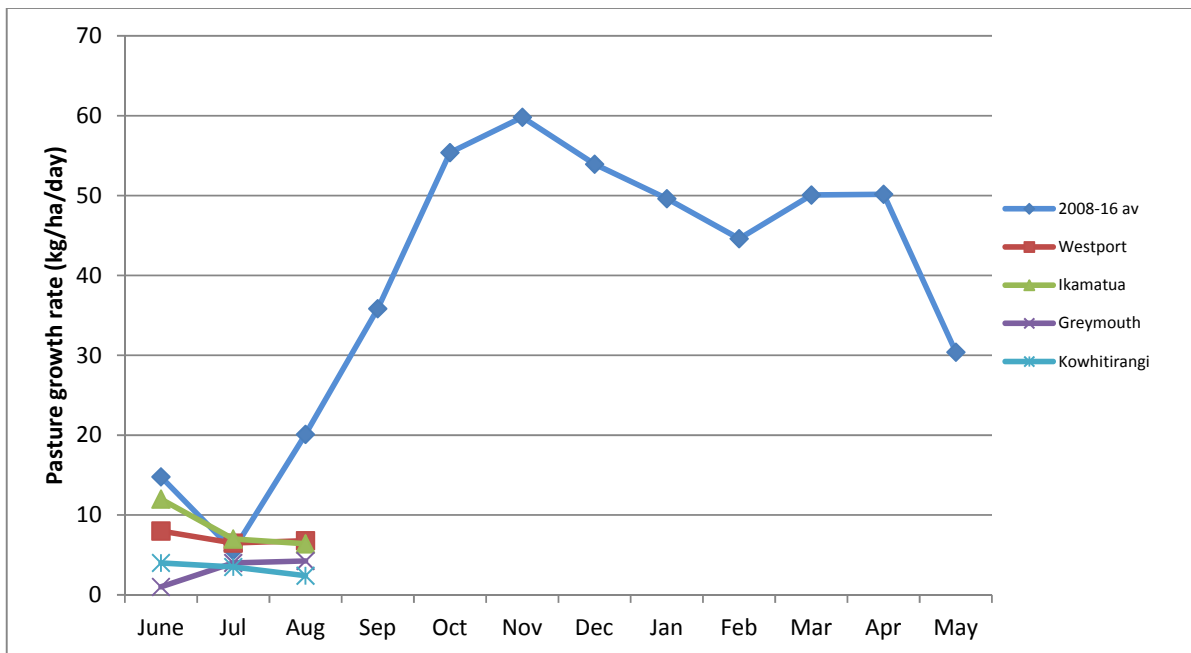
	Westport	Ikamatua	Greymouth	Kowhitirangi
Average cover (kg DM/ha)	1874	2080		1798
APC (26 August)	1888	2083	1891	1833
Rotation length (days)	45	40		55
Stocking rate				
Percentage in milk	64	63	68	69
Milksolids kg/cow	1.47	1.73		1.4
Milksolids kg/ha	2.2	2.7		2.4
MS/cow (season to date)	11	10	8*	8
MS/ha (season to date)	32	27	18*	17
N (kg/ha) year to date	15	8		
Current N application rate kg N/ha	20	30		None
	8 Aug	9 Aug		10 Aug
DM%	19.1	17.8		21.1
Pasture ME	12.1	12.7		12.7
Pasture NDF	46.2	35.7		37.3
Pasture CP	23.3	18.3		17.6
Target Intake (kg DM/cow/d)	15	18		16
Supplement (kg/cow/day)				
Soil temperature (°C)	11.0	9.0		8.5
Growth Rate (kg DM/day)	17	16		7
Rainfall	26	30		44
Conditions for farmwalk	Rain	Fine cool wind		Fine warm
Comments			*missing data	

NB: pasture quality data are for 1 sample collected from each farm

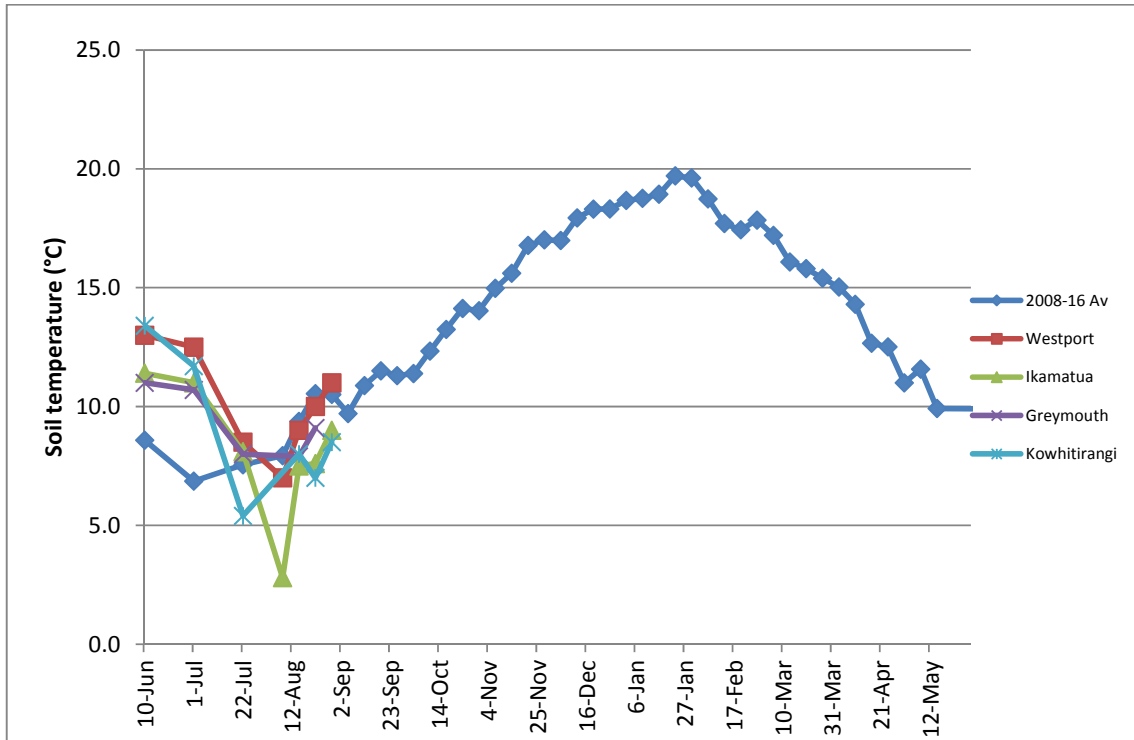
Weekly Pasture Growth Rates



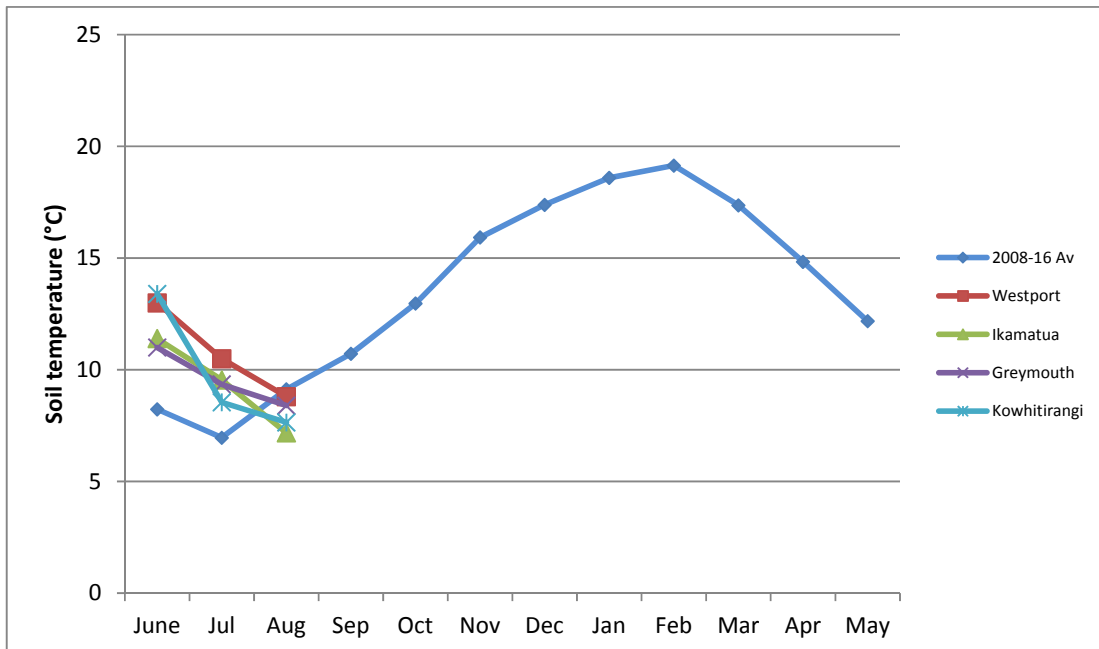
Monthly Pasture Growth Rates



Weekly Soil Temperature

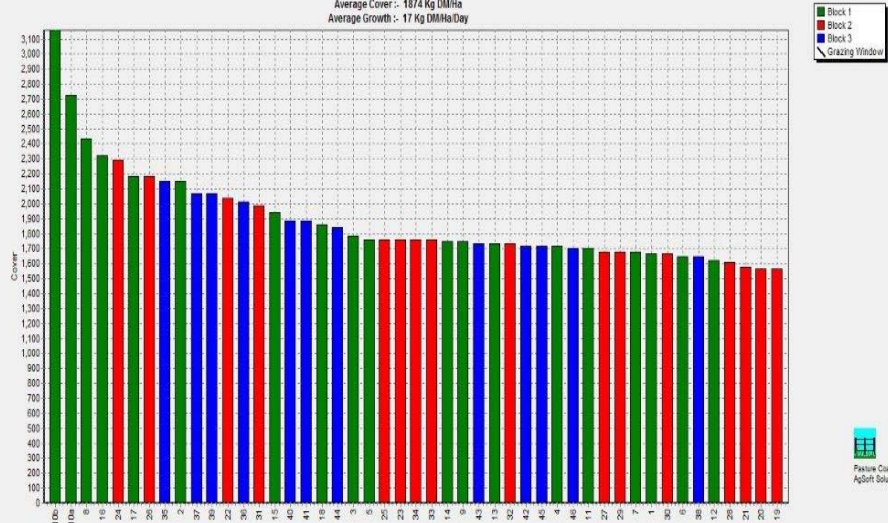


Monthly Soil Temperature



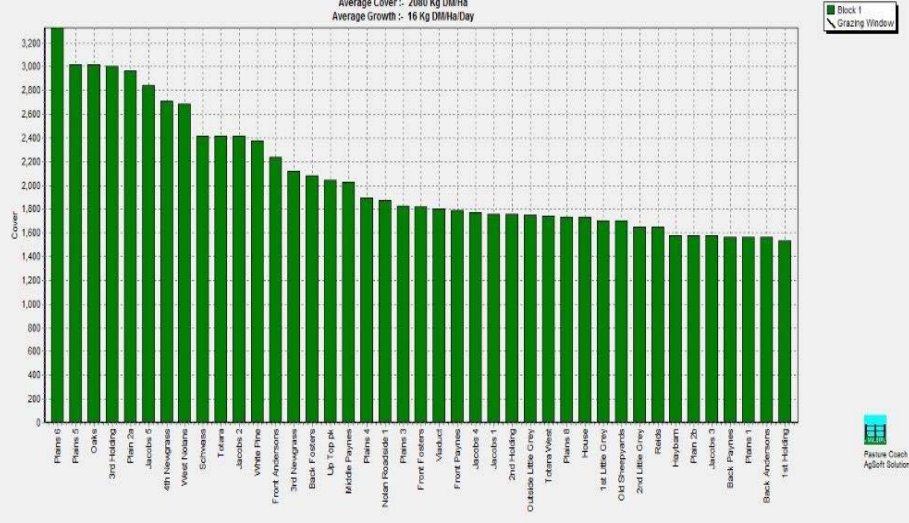
Westport

Farm Name: ADRIAN & CHERYL GALLAGHER
 Date Read: 8/29/2016
 Average Cover: 1874 Kg DM/ha
 Average Growth: 17 Kg DM/ha/Day



Ikamatua

Farm Name: ANDREW & NIKI MIRFIN
 Date Read: 8/30/2016
 Average Cover: 2080 Kg DM/ha
 Average Growth: 16 Kg DM/ha/Day



Greymouth

Kowhitirangi

Farm Name: TANE & RACHEL LITTLE
 Date Read: 8/31/2016
 Average Cover: 1798 Kg DM/ha
 Average Growth: 7 Kg DM/ha/Day

