

Westland Monitor Farm Project

Weekly Update 10 February 2017

CO comment

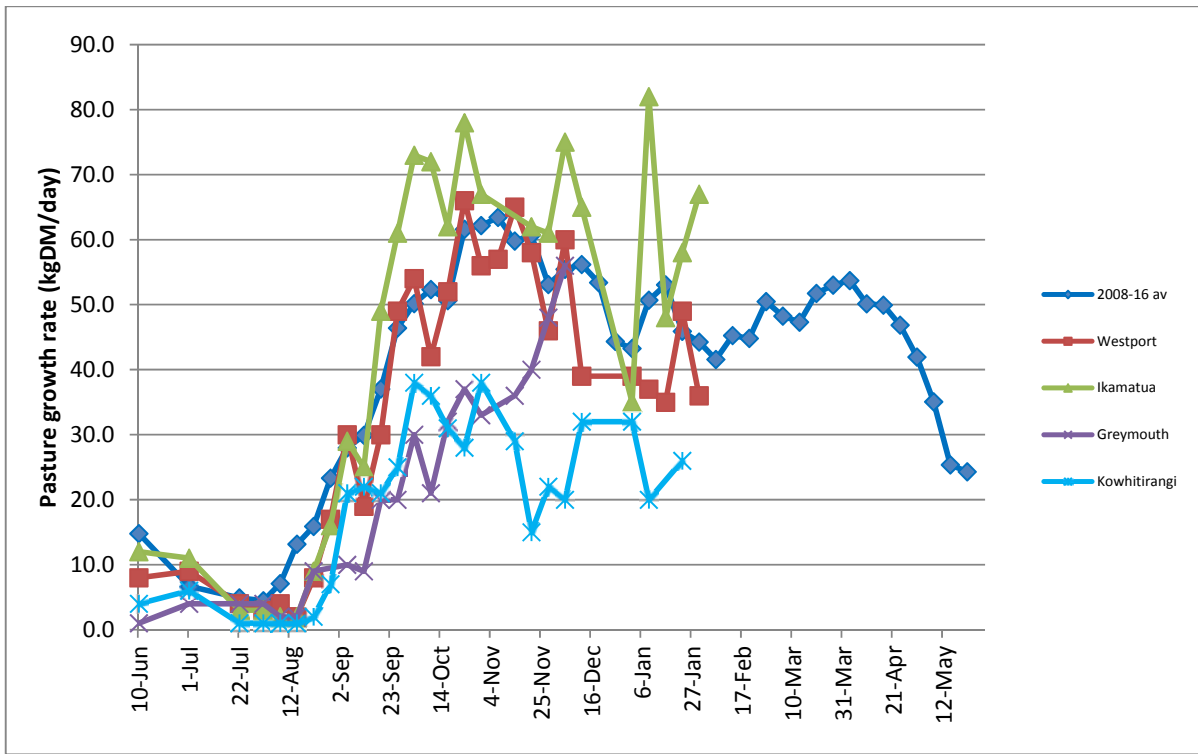
With the season about two thirds completed, now would be a good time to sit down with staff to plan the rest of the season and start the discussion about next season. Take the time to carry out performance appraisals with your staff and update any training plans. This would be a good opportunity to find out if their roles are challenging enough and also to discuss opportunities for further personal development. If staff are leaving it is always useful to ensure that you have a good transition process and carry out an exit interview. If recruiting, develop a clear process to deal with the applications and sort out potential interviewees. For more information, there is a vast resource available on DairyNZ's HR site (<http://www.peoplesmart.co.nz/>).

Farm Summary

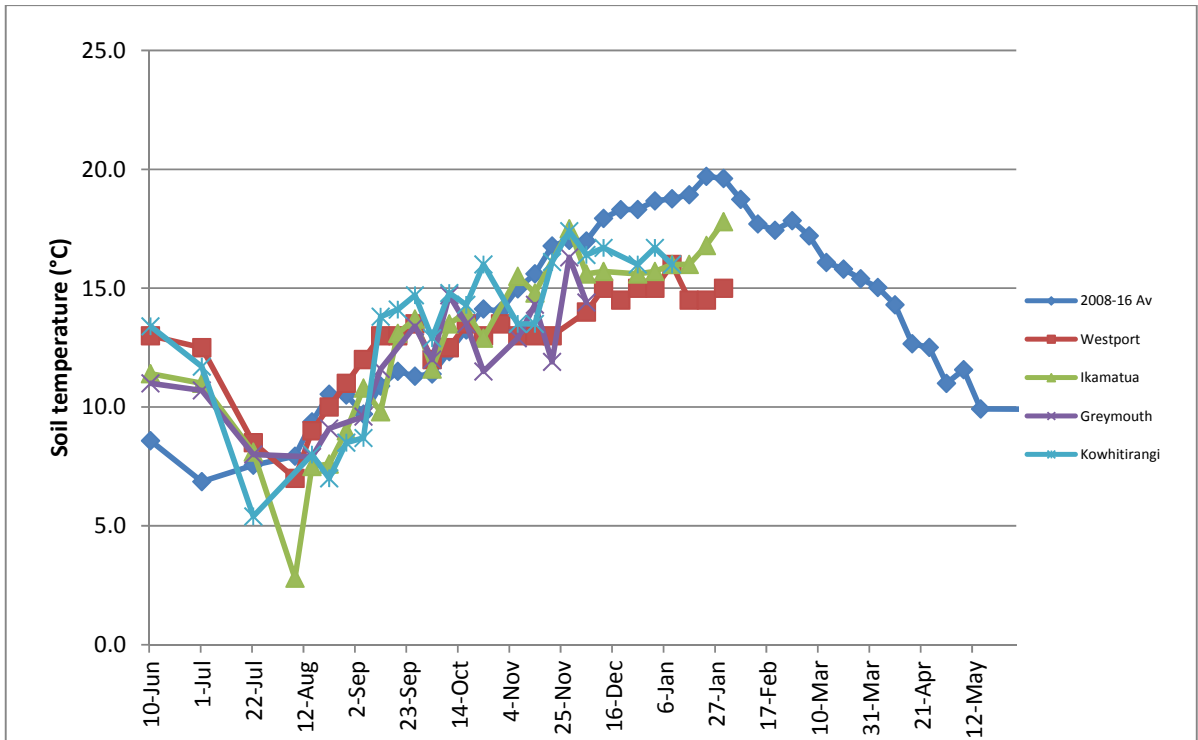
	Westport	Ikamatua	Greymouth	Kowhitirangi
Average cover (kg DM/ha)	2044	2119		
APC (26 January)	2027	2077		
Rotation length (days)	19	24		
Stocking rate	2.8	2.6		
Percentage in milk	95	97		
Milksolids kg/cow	1.64	1.76		
Milksolids kg/ha	4.6	4.5		
MS/cow (season to date)	269	271		
MS/ha (season to date)	788	721		
N (kg/ha) year to date	114	152		
Current N application rate kg N/ha	20	20		
	16 Jan	17 Jan		
DM%	14.6	14.3		
Pasture ME	12.2	>12.7		
Pasture NDF	54.8	42.9		
Pasture CP	20.1	31.5		
Target Intake (kg DM/cow/d)	18	20		
Supplement (kg/cow/day)	1.5	2.0		
Soil temperature (°C)	15	17.8		
Growth Rate (kg DM/day)	36	67		
Rainfall	46			
Conditions for farmwalk				
Comments				

NB: pasture quality data are for 1 sample collected from each farm

Weekly Pasture Growth Rates

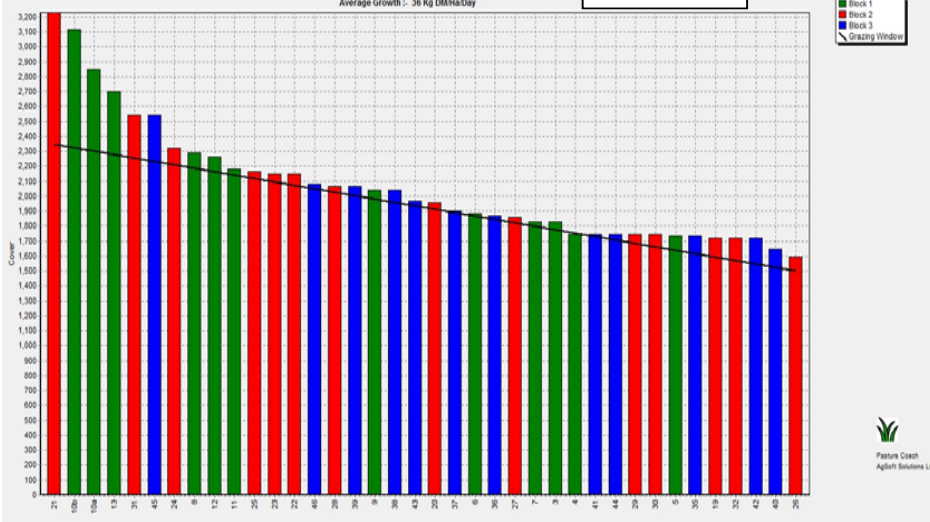


Weekly Soil Temperature



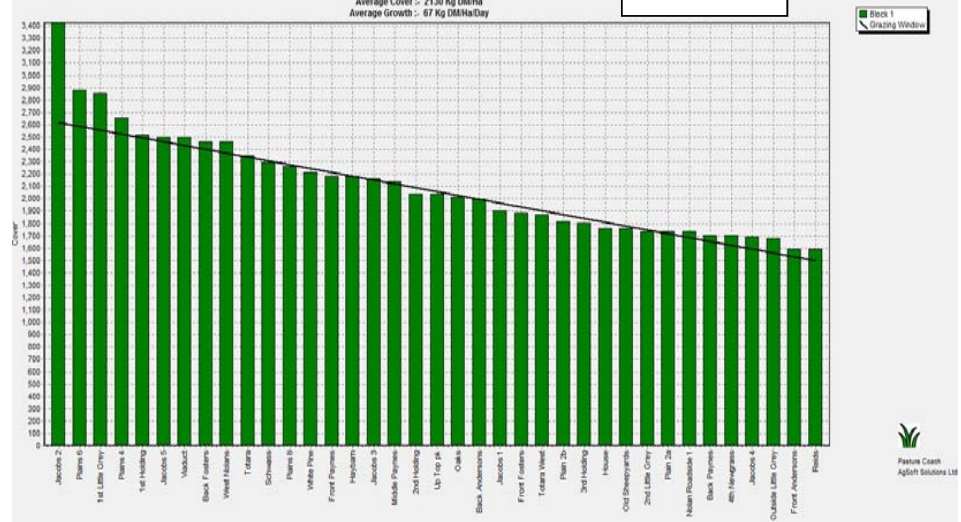
Westport

Farm Name: ADRIAN & CHERYL GALLAGHER
 Date Read : 6/02/2017
 Average Cover : 2015 Kg DM/ha
 Average Growth : 36 Kg DM/ha/Day



Ikamatua

Farm Name: ANDREW_NIKI_MIRFIN
 Date Read : 7/02/2017
 Average Cover : 2130 Kg DM/ha
 Average Growth : 67 Kg DM/ha/Day



Greymouth

Kowhitirangi

