

Westland Monitor Farm Project

Weekly Update 10 November 2016

CO comment

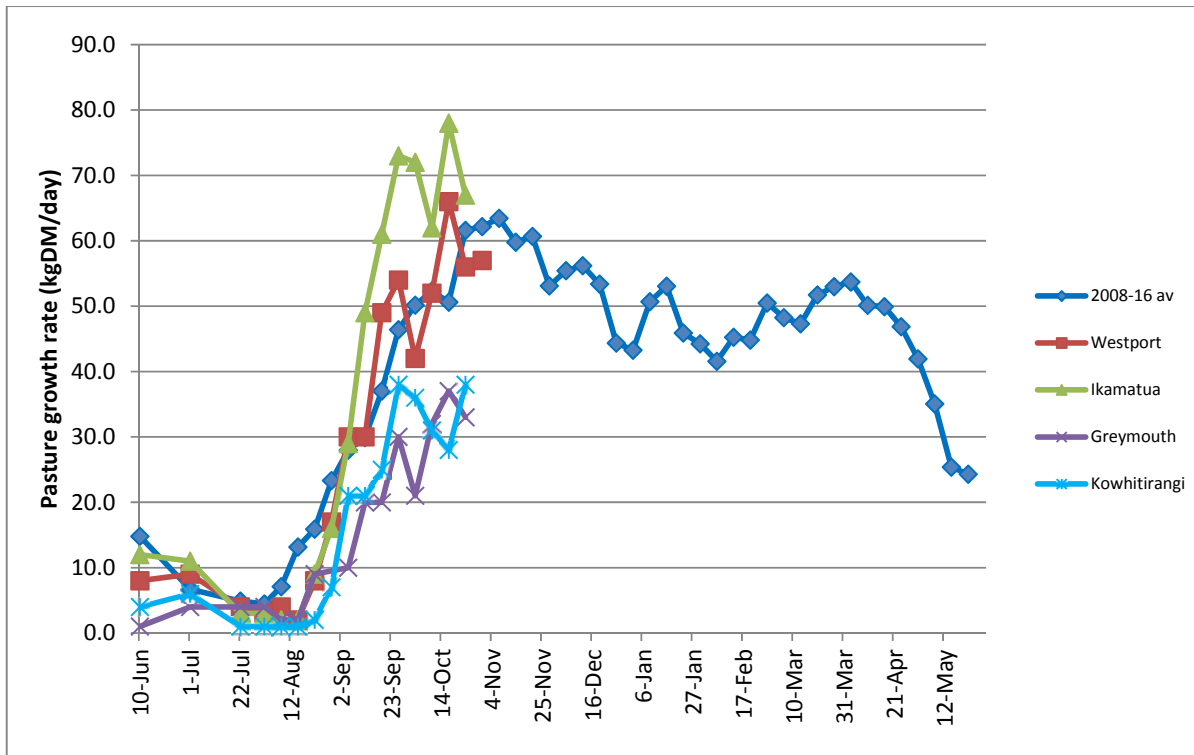
For some of the earlier calving herds, it's now getting close to having completed the first three weeks of mating and it's a good time to check how things are tracking. The target three-week submission rate is 90%. Keep everyone focussed on heat detection – re-paint the cows that have cycled and been mated, touch up any paint that might be lifting as coats moult and keep on with the regular paddock checks for cycling cows – it will make a difference to your mating results. It's also time to start monitoring seed head emergence – this is more important in paddocks sown in early heading cultivars. Maintaining consistent and even residuals around 15-1600 kg DM/ha will ensure that the cows eat the seed head at an immature stage. Once the seed head has emerged, pasture quality and palatability will decline. Check out Farm Facts 1-37 and 1-38 for assistance in identifying and managing surplus pasture.

Farm Summary

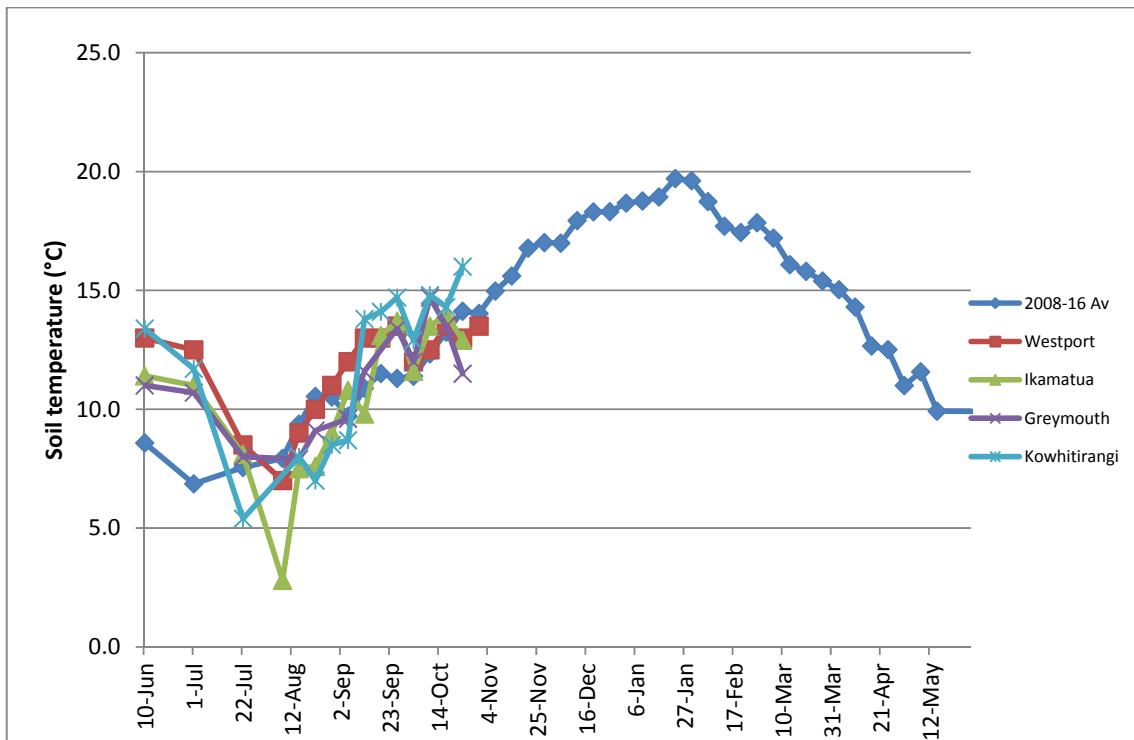
	Westport	Ikamatua	Greymouth	Kowhitirangi
Average cover (kg DM/ha)	2089			
APC (3 Nov)	2143	2059	1890	1916
Rotation length (days)	19.5	22	20	23
Stocking rate	2.8	2.6	2.5	2.3
Percentage in milk	100	100	100	100
Milksolids kg/cow	2.17	2.15	2.02	1.79
Milksolids kg/ha	6.1	5.3	5.2	4.2
MS/cow (season to date)	130	107	154	101
MS/ha (season to date)	373	303	341	242
N (kg/ha) year to date	59	73	82	
Current N application rate kg N/ha	15	28	25	
	10 Oct	11 Oct		12 Oct
DM%	16.9	12.9		12.8
Pasture ME	12.7	12.7		12.7
Pasture NDF	46.2	42.2		42.3
Pasture CP	32.7	27.3		25.5
Target Intake (kg DM/cow/d)	18	20	21	18
Supplement (kg/cow/day)	1.0	2.0	2.5	1.5
Soil temperature (°C)	13.5	14.6	14.2	
Growth Rate (kg DM/day)	57			
Rainfall	40.0		42.0	125.0
Conditions for farmwalk	Fine, overcast, cold wind. Farm very wet	Fine	Heavy rain, thunder, lightning, gale winds	Heavy rain, thunder, lightning, gale winds
Comments				

NB: pasture quality data are for 1 sample collected from each farm

Weekly Pasture Growth Rates

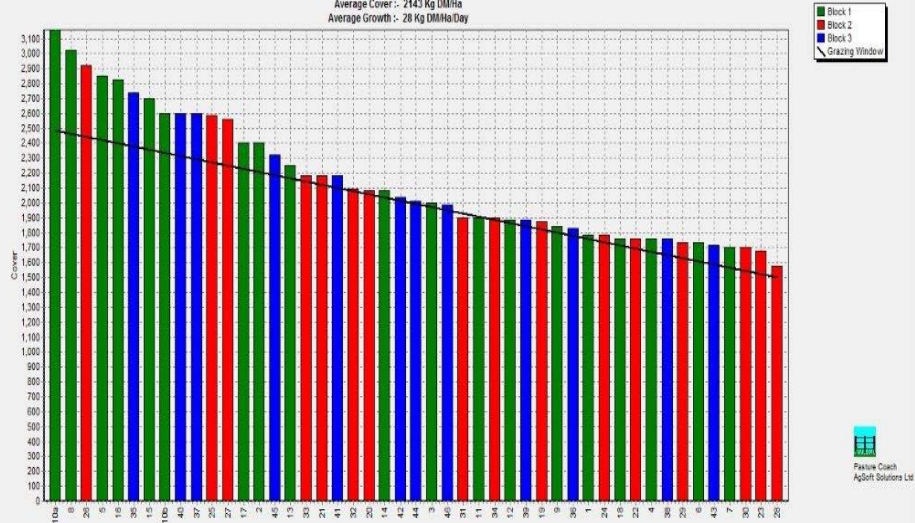


Weekly Soil Temperature



Westport

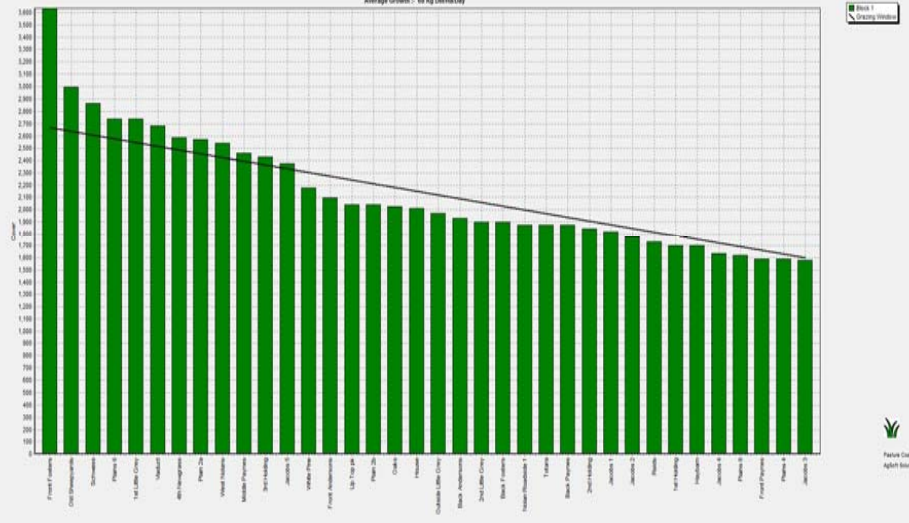
Farm Name: ADRIAN & CHERYL GALLAGHER
 Date Read : 11/7/2016
 Average Cover : 2143 Kg DM/ha
 Average Growth : 28 Kg DM/ha/Day



Pasture Coach
AgSoft Solutions Ltd

Ikamatua

Farm Name: ANDREW BROWN
 Date Read : 06/11/2016
 Average Cover : 2121 Kg DM/ha
 Average Growth : 68 Kg DM/ha/Day



Pasture Coach
AgSoft Solutions Ltd

Greymouth

Kowhitirangi

