

Westland Monitor Farm Project

Weekly Update 11 January 2017

CO comment

Summer! What summer! It's been a real battle managing the inconsistent weather patterns we've experienced this season. However, despite the constantly changeable weather patterns, pasture growth has still been exceeding stock requirements and feed surpluses exist on many farms. Use regular farm walks to monitor the movement in average pasture cover and identify paddocks that are surplus to requirements and if of sufficient size, either harvest them as supplement or consider using the surplus area to renovate some pastures. Seed head production should have slowed, so pasture quality at the higher pasture covers won't have dropped off quite as much.

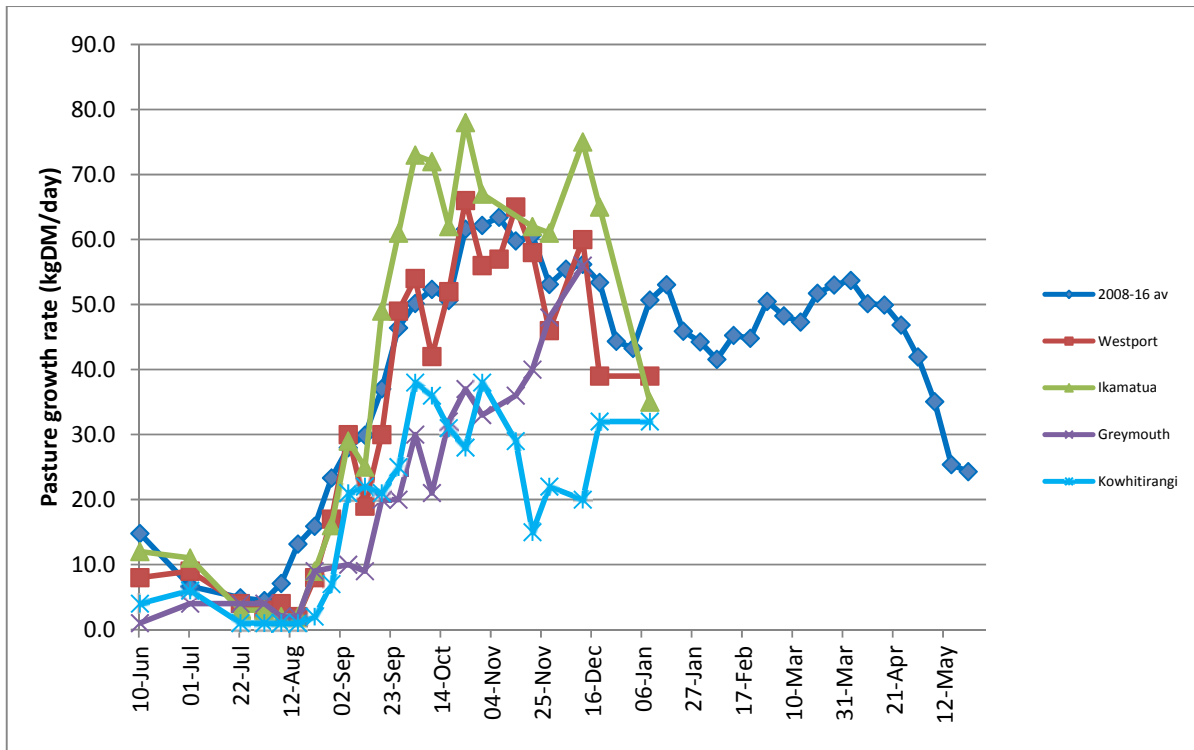
It's also a good time to have a closer look at how the young stock are progressing – are they on target? Schedule regular checks on them to assess the need for any intervention – be that animal health treatments or a change in the feed regime if they have fallen behind target. Historical LIC data via MINDA Weights shows that many mobs drift away from target over the summer months and it can become difficult to remedy this as the need to build up feed through autumn increases. If you are interested in viewing the full summary of monitoring results, follow this link [West Coast Monitor Farm Full Summary](#)

Farm Summary

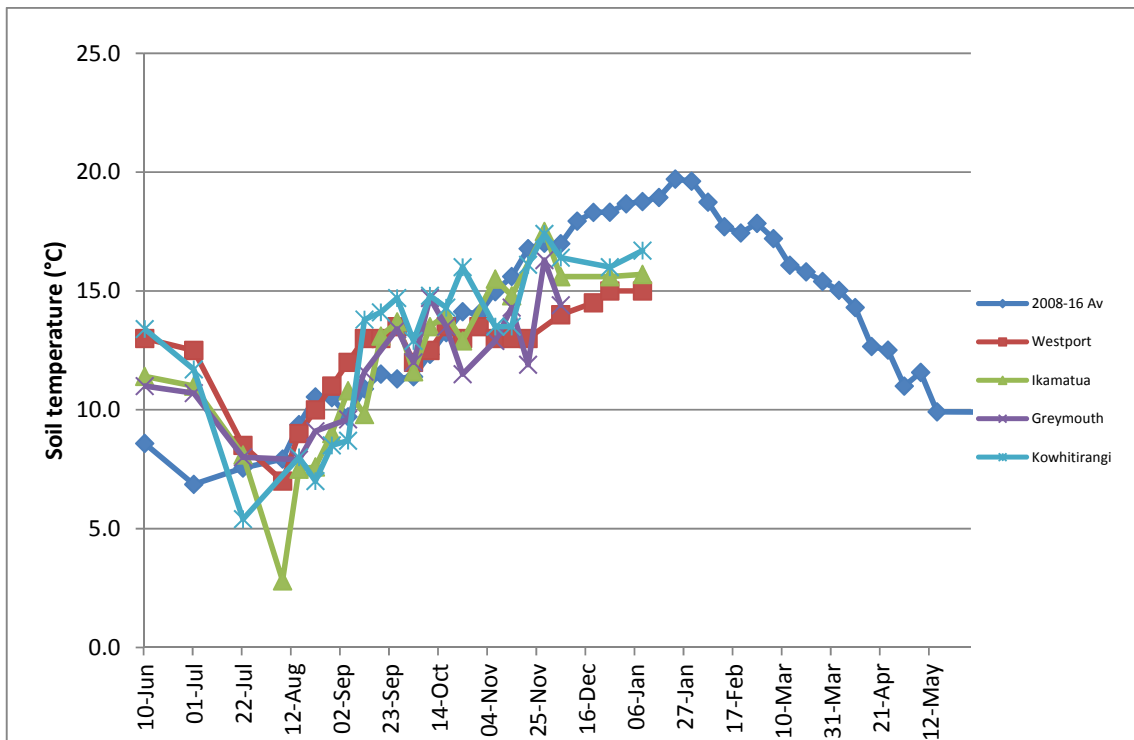
	Westport	Ikamatua	Greymouth	Kowhitirangi
Average cover (kg DM/ha)	1930	2208		1794
APC (4 January 2017)	1886	2225		1794
Rotation length (days)	18	23		23
Stocking rate	2.8	2.6		2.3
Percentage in milk	96	99		
Milksolids kg/cow	1.77	1.86		1.39
Milksolids kg/ha	4.8	4.9		3.2
MS/cow (season to date)	230	234		209
MS/ha (season to date)	658	625		498
N (kg/ha) year to date	103	126	133	50
Current N application rate kg N/ha	15	25	20	-
	5 Dec	6 Dec	30 Nov	7 Dec
DM%	17.7	16.8	15.3, 18.2	12.9
Pasture ME	>12.6	>12.7	>12.7, 12.2	12.6
Pasture NDF	43.8	43.7	43.2, 46.8	41.0
Pasture CP	29.4	23.6	29.4, 21.8	29.0
Target Intake (kg DM/cow/d)	18	20		18
Supplement (kg/cow/day)	1.5	2.5		1.5
Soil temperature (°C)	15.0	16.7		16.0
Growth Rate (kg DM/day)	38	59		26
Rainfall	49	35		50
Conditions for farmwalk				Very wet
Comments				

NB: pasture quality data are for 1 sample collected from each farm

Weekly Pasture Growth Rates

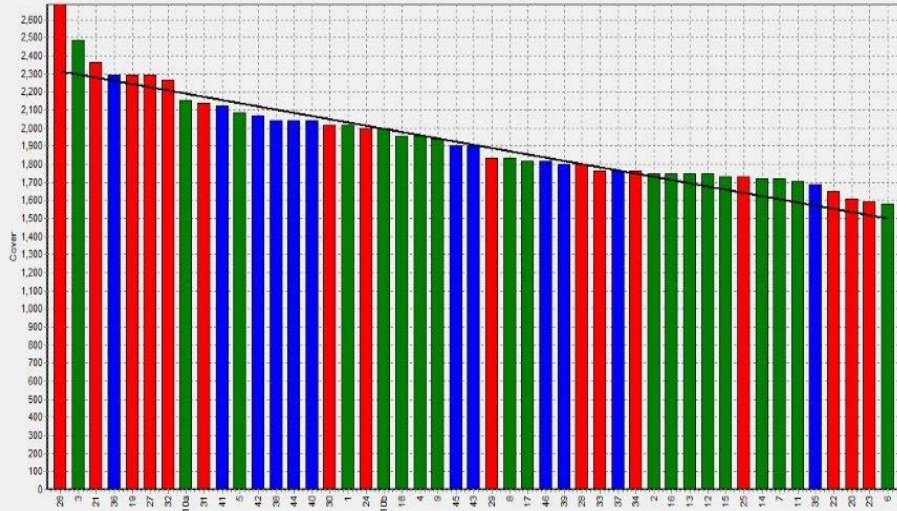


Weekly Soil Temperature



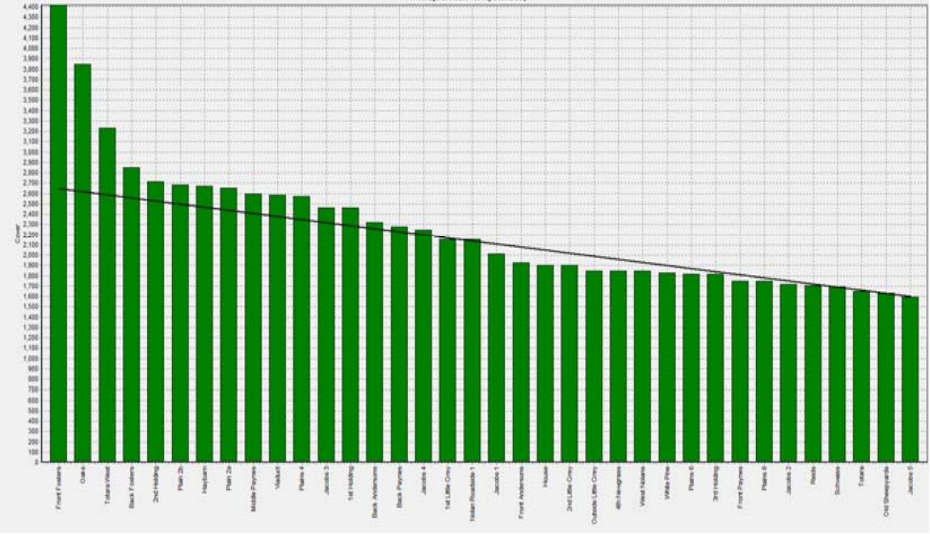
Westport

Farm Name:- ADRIAN & CHERYL GALLAGHER
 Date Read :- 19/2017
 Average Cover :- 1930 Kg DM/ha
 Average Growth :- 38 Kg DM/ha/Day



Ikamatua

Farm Name:- ANDREW, BIL, BRYAN
 Date Read :- 19/01/2017
 Average Cover :- 2200 Kg DM/ha
 Average Growth :- 58 Kg DM/ha/Day



Greymouth

Kowhitirangi

Farm Name:- YANE & RACHEL LITTLE
 Date Read :- 19/01/2017
 Average Cover :- 1704 Kg DM/ha
 Average Growth :- 28 Kg DM/ha/Day

