

Westland Monitor Farm Project

Weekly Update 12/8/16

CO comment

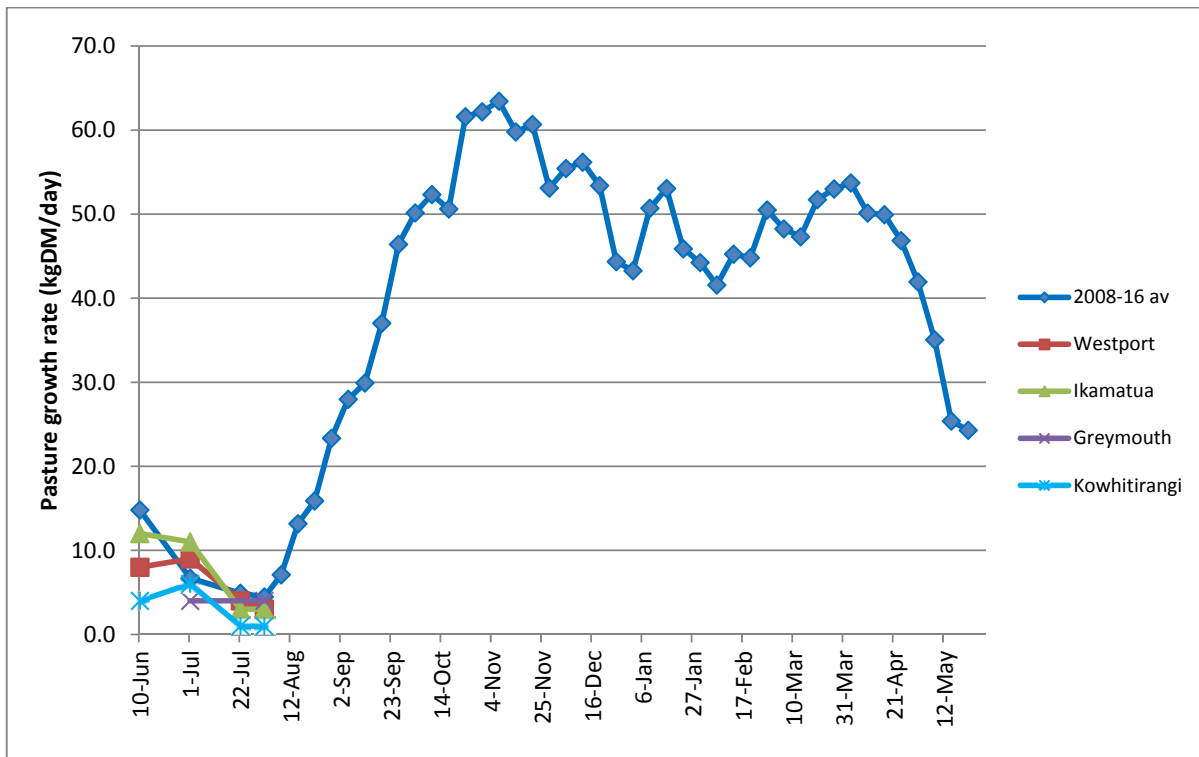
The recent run of frosts have been a welcome change from the persistent wet conditions. Hopefully the frosts won't unduly compromise pasture regrowth rates, but will have aided pasture utilisation. Keep monitoring your rotation progress against your Spring Rotation Plan – are you within the hectares grazed to date? Keeping track of this is a critical aspect of ensuring that you reach balance date with sufficient average pasture cover to allow you to meet the herds pasture requirement. If you are ahead of the hectares grazed to date you will need to cut down the areas being to grazed each day to bring things back into line. Use extra supplements if they are available to allow a reduction in the areas grazed each day. The earlier you start making the adjustments, the less the adjustments will need to be on a daily basis. Think about holding the later calving cows a bit tighter for a bit longer, or even get them off the platform if that's an option. Remember that making sure you have enough good quality pasture on-farm at balance date will help peak milk production and reproductive performance over the mating period.

Farm Summary

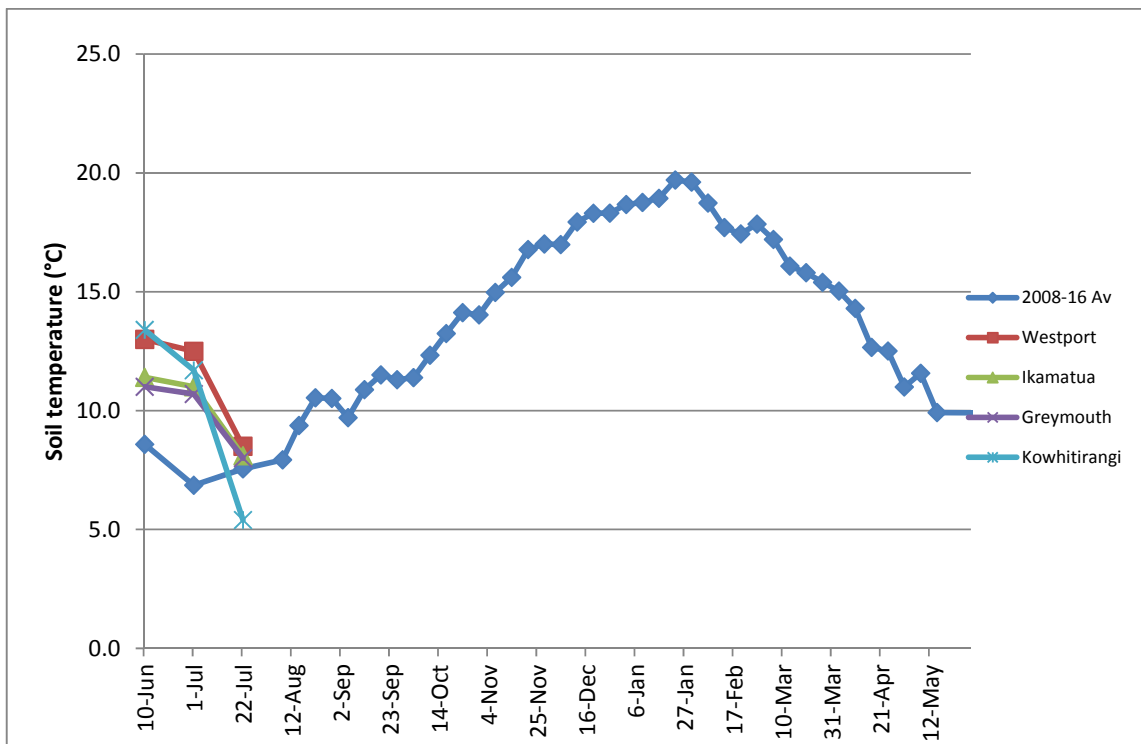
| | Westport | Ikamatua | Greymouth | Kowhitirangi |
|------------------------------------|--------------------|--------------------|-----------|--------------------|
| Average cover (kg DM/ha) | 1996 | 2316 | | 1874 |
| APC (t) | | | | |
| Rotation length (days) | | 80 | | |
| Stocking rate | | | | |
| Percentage in milk | 76 | | | |
| Milksolids kg/cow | | | | |
| Milksolids kg/ha | | | | |
| MS/cow (season to date) | | | | |
| MS/ha (season to date) | | | | |
| | | | | |
| N (kg/ha) year to date | | | | |
| Current N application rate kg N/ha | | | | |
| | | | | |
| | | | | |
| DM% | | | | |
| Pasture ME | | | | |
| Pasture NDF | | | | |
| Pasture CP | | | | |
| | | | | |
| Target Intake (kg DM/cow/d) | | 18 | | |
| Supplement (kg/cow/day) | 2.8 | 3 | | |
| | | | | |
| Soil temperature (°C) | 7.0 | 3 | | |
| Growth Rate (kg DM/day) | 3 | 3 | 4 | 1 |
| Rainfall | 59 | 25 | | |
| Conditions for farmwalk | Fine but very cold | Big frost nice day | | Big frost nice day |
| Comments | | | | |

NB: pasture quality data are for 1 sample collected from each farm

Weekly Pasture Growth Rates

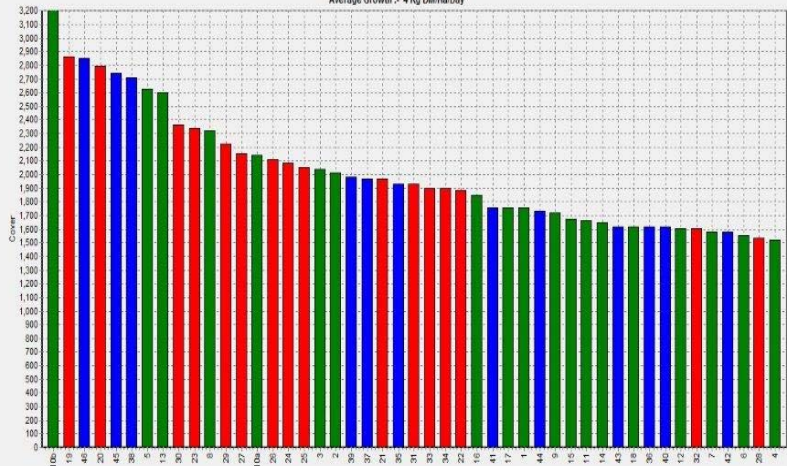


Weekly Soil Temperature



Westport

Farm Name: ADRIAN & CHERYL GALLAGHER
 Date Read : 8/8/2016
 Average Cover : 1996 Kg DM/Ha
 Average Growth : 4 Kg DM/Ha/Day



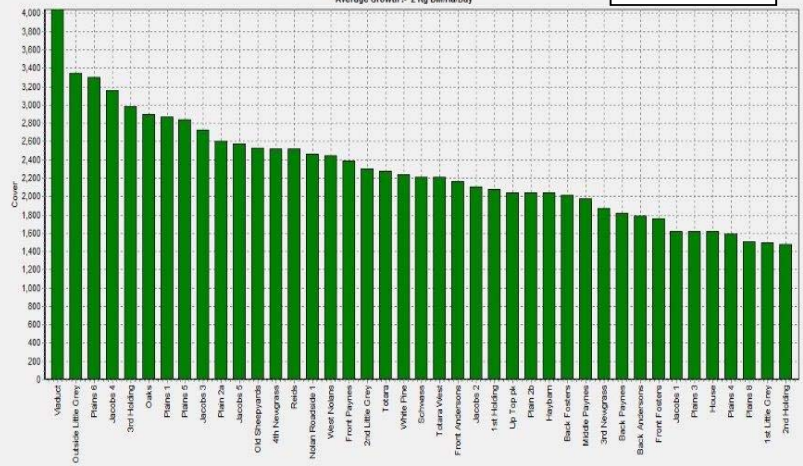
Stock 1
 Stock 2
 Stock 3
 Grazing Window



Residual 0 Pre-grazing Save Print Sort Order Tools Rotation Calc Zoom In Zoom Out Zoom 100%

Ikamatua

Farm Name: ANDREW & NIKI MIRFIN
 Date Read : 8/8/2016
 Average Cover : 2316 Kg DM/Ha
 Average Growth : 2 Kg DM/Ha/Day



Stock 1
 Grazing Window

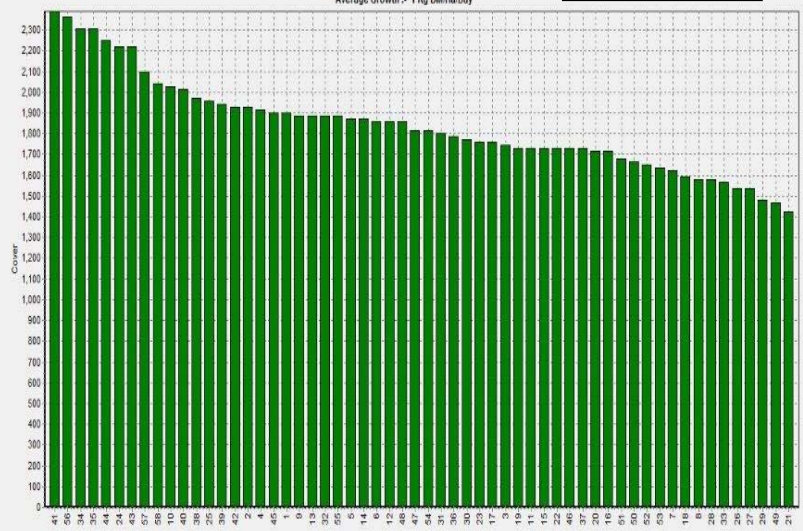


Residual 0 Pre-grazing Save Print Sort Order Tools Rotation Calc Zoom In Zoom Out Zoom 100%

Greymouth

Kowhitirangi

Farm Name: TANE & RACHEL LITTLE
 Date Read : 8/10/2016
 Average Cover : 1874 Kg DM/Ha
 Average Growth : 1 Kg DM/Ha/Day



Stock 1
 Grazing Window



Residual 0 Pre-grazing Save Print Sort Order Tools Rotation Calc Zoom In Zoom Out Zoom 100%

