

Westland Monitor Farm Project

Weekly Update

CO comment

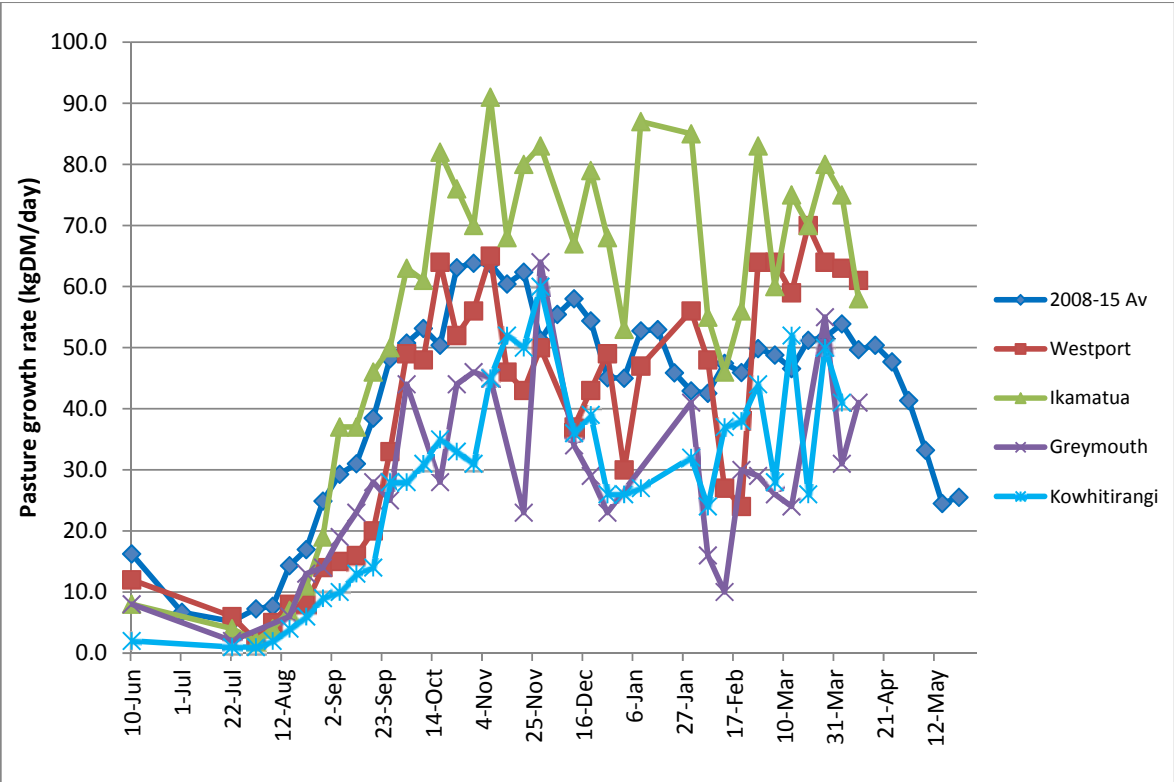
Buoyant growing conditions over the past month has resulted in some later harvests of supplement and delayed sowing dates of new pastures, but the utopia will end sometime - maybe with a crunch! The important factors remain – cows need to be close to target calving body condition by drying off (BCS 5 for mixed aged cows and 5.5 for rising 2 and 3 year olds) and average pasture cover (APC) sufficient to achieve pasture cover requirements at calving. There is no magic number as the amount required will be dependent on your wintering system. If wintering off the milking platform, on a support block or crop, APC at dry off can be lower as growth during June and July will contribute 350-450 kg DM/ha based on previous winter growth rate monitoring. If you are wintering on the milking platform, APC at dry off needs to be close to that required at calving. Think about these factors, assess the current situation on your farm and develop a plan for the next 8 weeks, including a feed budget, to ensure your body condition and pasture targets are achieved. Management changes put in place now will be far more subtle and easier to implement than those that might be required this time next month

Farm Summary

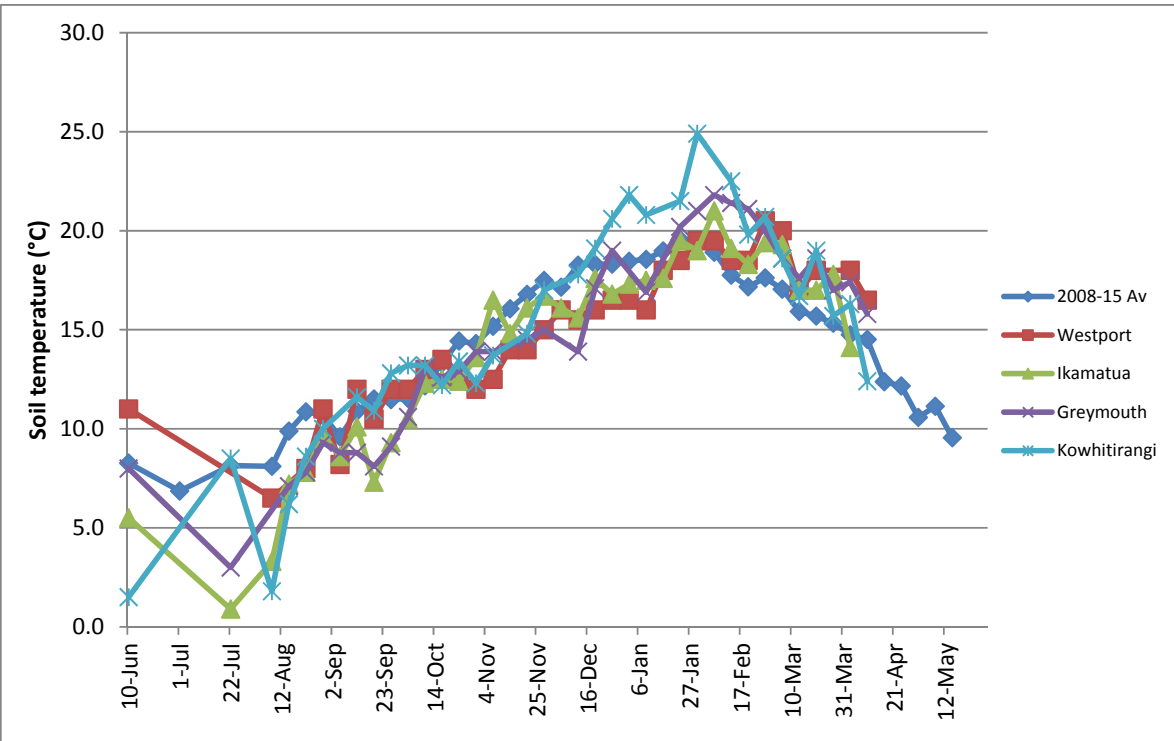
	Westport	Ikamatua	Greymouth	Kowhitirangi
Average cover (kg DM/ha)	2276	2301	2217	2184
APC (7 April)	2285	2420	2217	2104
Rotation length (days)	24	25	23	33.3
Stocking rate	2.4	2.6	2.1	2.3
Percentage in milk	83	96	82	97
Milksolids kg/cow	1.43	1.36	1.26	1.19
Milksolids kg/ha	3.4	3.4	2.5	2.8
MS/cow (season to date)				
MS/ha (season to date)	1065	881	907	648
N (kg/ha) year to date	203	300	310	119
Current N application rate kg N/ha	15-20	30	20	None
	18/3	18/3		18/3
DM%	13.6	11.8		13.3
Pasture ME	12.5	11.8		12.1
Pasture NDF	47.1	47.4		46.3
Pasture CP	29.4	33.3		34.4
Target Intake (kg DM/cow/d)	18	18	18	18
Supplement (kg/cow/day)	1.0	1.2		
Soil temperature (°C)	16.5		15.8	12.4
Growth Rate (kg DM/day)	61	58	41	43
Rainfall	15		19	133.5
Conditions for farmwalk	Fine warm	Showers		Fine warm cold start
Comments				

NB: pasture quality data are for 1 sample collected from each farm

Weekly Pasture Growth Rates

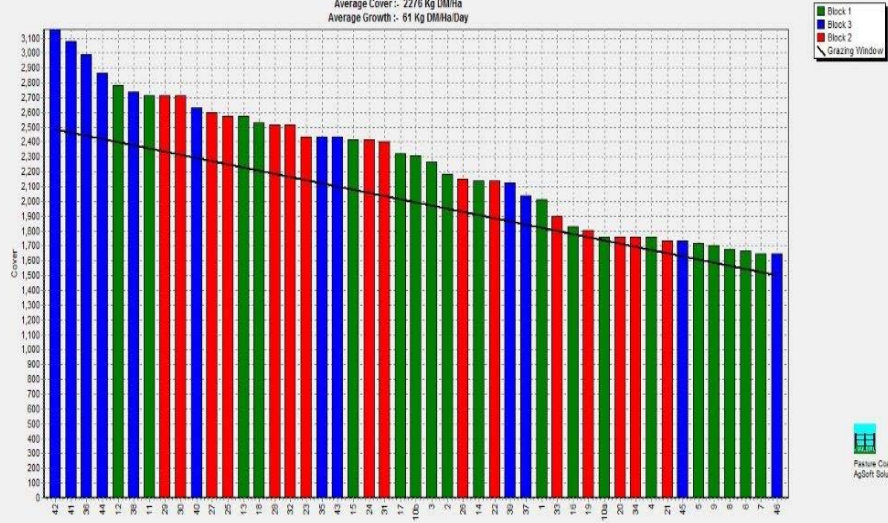


Weekly Soil Temperature



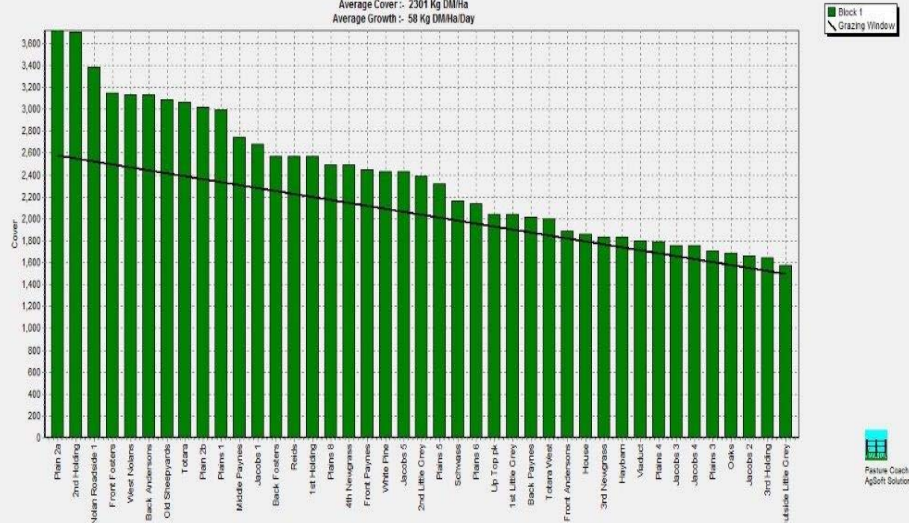
Westport

Farm Name: ADRIAN & CHERYL GALLAGHER
 Date Read: 4/12/2016
 Average Cover: 2276 Kg DM/Ha
 Average Growth: 81 Kg DM/Ha/Day



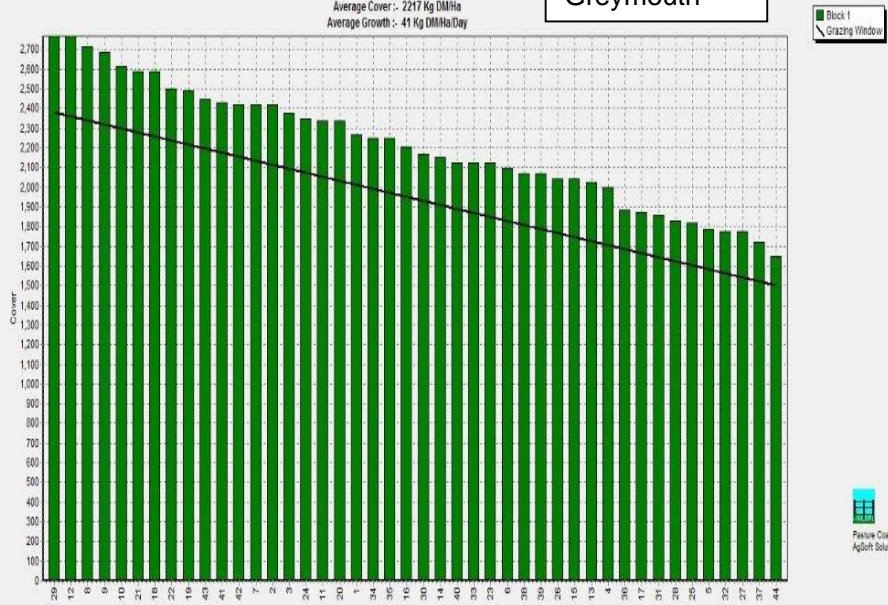
Ikamatua

Farm Name: ANDREW & NIKI MURFIN
 Date Read: 4/12/2016
 Average Cover: 2304 Kg DM/Ha
 Average Growth: 58 Kg DM/Ha/Day



Greymouth

Farm Name: ANDREW ROBB
 Date Read: 4/12/2016
 Average Cover: 2217 Kg DM/Ha
 Average Growth: 41 Kg DM/Ha/Day



Kowhitirangi

Farm Name: TANE & RACHEL LITTLE
 Date Read: 4/12/2016
 Average Cover: 2184 Kg DM/Ha
 Average Growth: 43 Kg DM/Ha/Day

