

# Westland Monitor Farm Project

Weekly Update 14 October 2016

## CO comment

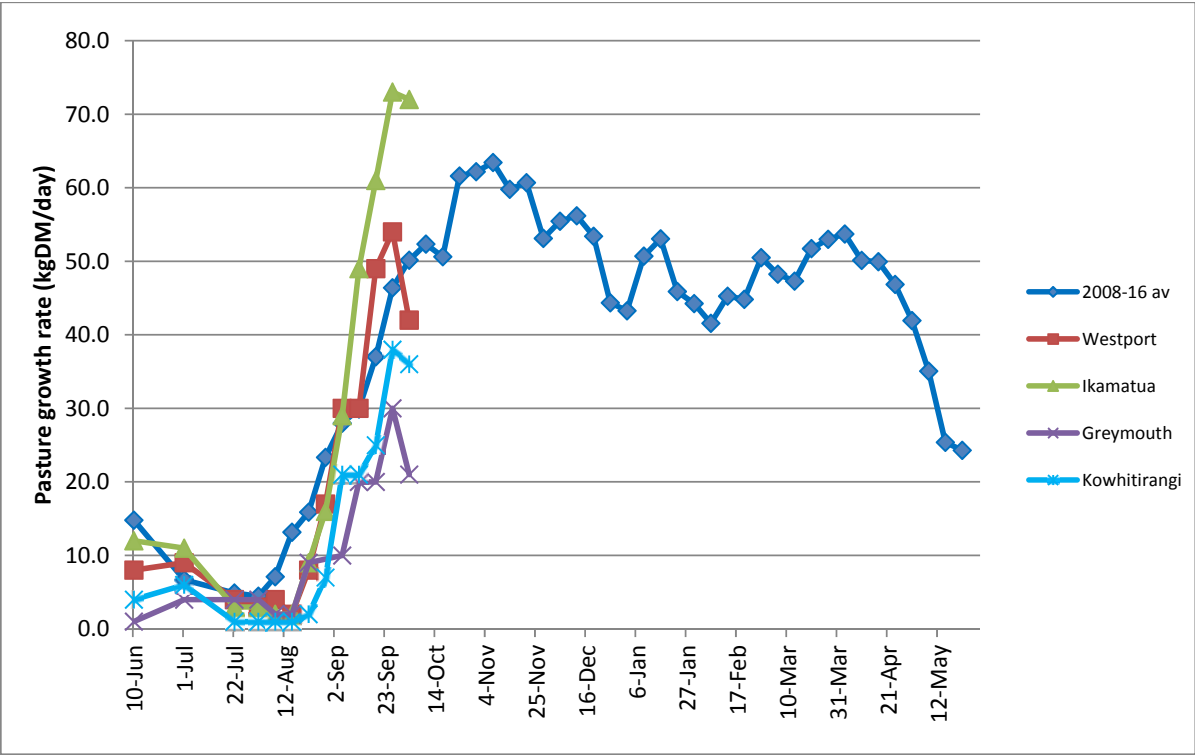
Mating is just around the corner and the focus needs to be on ensuring a compact calving is retained for next season. The two key drivers of the 6-week in-calf rate are submission rate and conception rate. Submission rate (SR) is influenced by heat detection and putting the right cows up for mating, while conception rate (CR) is about achieving successful pregnancies to the first insemination. The submission rate has the biggest impact on 6-week in-calf rate and is probably the factor that is more under your control. A 3 week SR of at least 90% is the industry target. Make sure you use the pre-mating period to critically assess your heat detection practices and systems to improve your chances of a successful mating. Factors to consider include tail paint management; when, where and how often you will do observations to identify cycling cows and the reliability of your drafting facilities. Train/refresh staff in heat detection and have procedures in place to ensure mating calendars and recording books are correctly filled in. For more information on heat detection have a look at <http://www.dairynz.co.nz/animal/reproduction/heat-detection/>

## Farm Summary

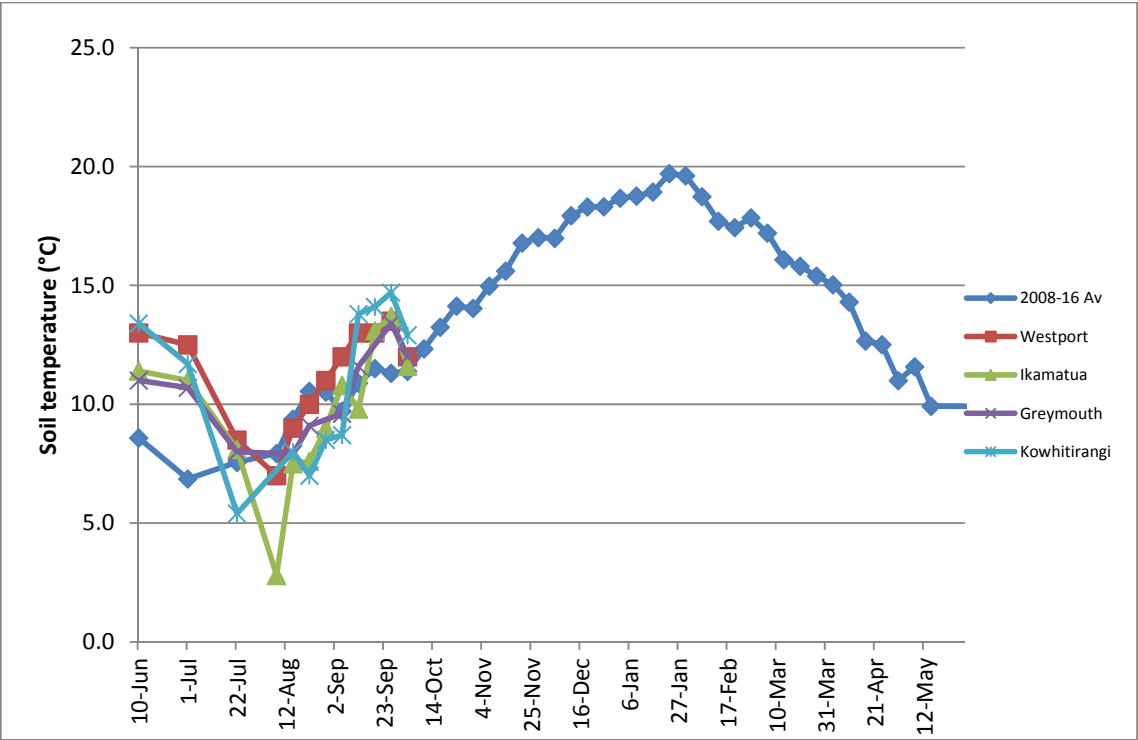
	Westport	Ikamatua	Greymouth	Kowhitirangi
Average cover (kg DM/ha)	2050	2201	1826	1925
APC (6 October 2016)	2060	2274	1855	1940
Rotation length (days)	18.5	22	23	
Stocking rate	3.0	2.3	2.6	
Percentage in milk	98	97	96	
Milksolids kg/cow	2.16	2.07	2.04	
Milksolids kg/ha	5.9	4.8	5.0	
MS/cow (season to date)	78	57	88	63
MS/ha (season to date)	224	208	196	127
N (kg/ha) year to date	40	47	70	
Current N application rate kg N/ha	20	28	None	
DM%				
Pasture ME				
Pasture NDF				
Pasture CP				
Target Intake (kg DM/cow/d)	18	20	20	
Supplement (kg/cow/day)	2.0	3.0	5.3	
Soil temperature (°C)	12.0	11.6	12.0	12.9
Growth Rate (kg DM/day)	42	72	21	36
Rainfall	43	30	59.5	
Conditions for farmwalk	Cold, fine	Fine warm, big frost yesterday		Heavy rain, very cold
Comments				

NB: pasture quality data are for 1 sample collected from each farm

Weekly Pasture Growth Rates

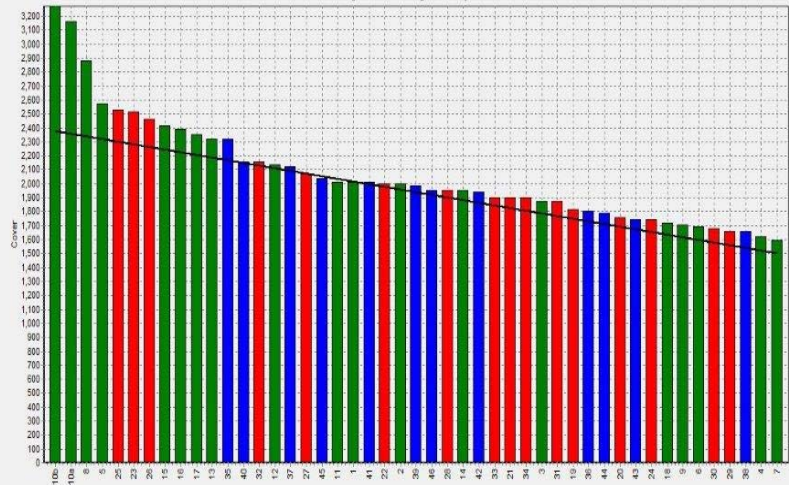


Weekly Soil Temperature



### Westport

Farm Name: ADRIAN & CHERYL GALLAGHER  
 Date Read : 10/10/2016  
 Average Cover : 2050 Kg DM/ha  
 Average Growth : 42 Kg DM/ha/Day

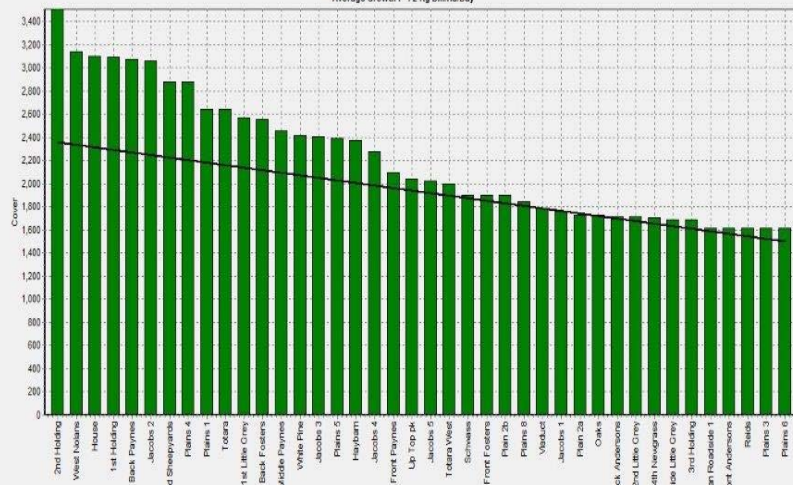


Block 1  
 Block 2  
 Block 3  
 Grazing Window



### Ikamatua

Farm Name: ANDREW & NIKI MIRFIN  
 Date Read : 10/11/2016  
 Average Cover : 2201 Kg DM/ha  
 Average Growth : 72 Kg DM/ha/Day



Block 1  
 Grazing Window



### Greymouth

Farm Name: ANDREW ROBB  
 Date Read : 10/12/2016  
 Average Cover : 1826 Kg DM/ha  
 Average Growth : 21 Kg DM/ha/Day



Block 1  
 Grazing Window



### Kowhitirangi

Farm Name: TANE & RACHEL LITTLE  
 Date Read : 10/12/2016  
 Average Cover : 1925 Kg DM/ha  
 Average Growth : 36 Kg DM/ha/Day



Block 1  
 Grazing Window











