

# Westland Monitor Farm Project

## Weekly Update 15 September 2016

### CO comment

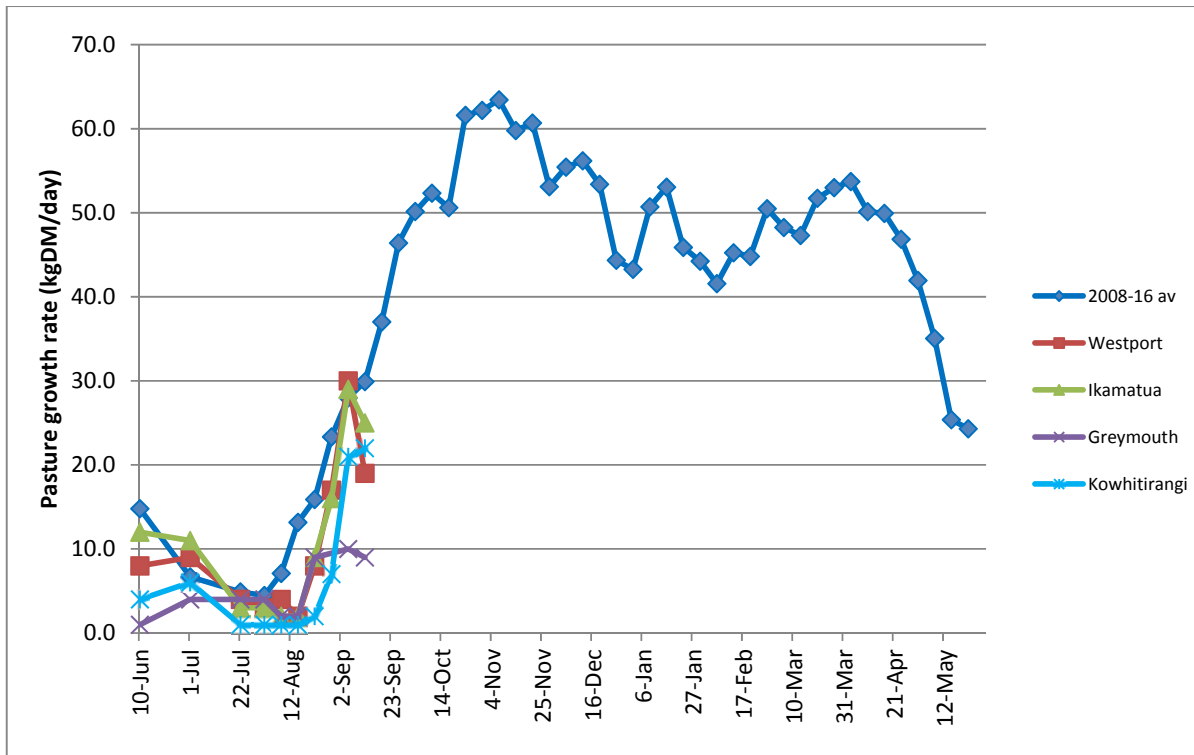
For some, the term balance date might be new. This is when daily pasture growth matches or exceeds daily stock demand. Variation in farm stocking rate makes this date specific to each farm. To calculate balance date for your farm you will need to consider both animal intake and stocking rate. For example, a farm stocked at 2.2 cows/ha and looking to feed the milking cows 18kgDM/cow/day, will reach balance date when pasture growth rate exceeds 40kg DM/ha/day (2.2 x 18). Maintain regular pasture walks and modify the round length (or daily area allocation) and supplementary feed offered to ensure you meet your predicted average pasture cover targets from your feed budget. Updating your feed wedge will assist in identifying any feed surpluses and help with planning your paddock allocation. When conditions allow aim to achieve residuals of 7 – 8 clicks or 1500 - 1700kgDM/ha. Have a look at <http://www.dairynz.co.nz/publications/farmfacts/farm-management/farmfact-1-84/> to calculate the pasture growth rate and Average Pasture Cover required at balance date.

### Farm Summary

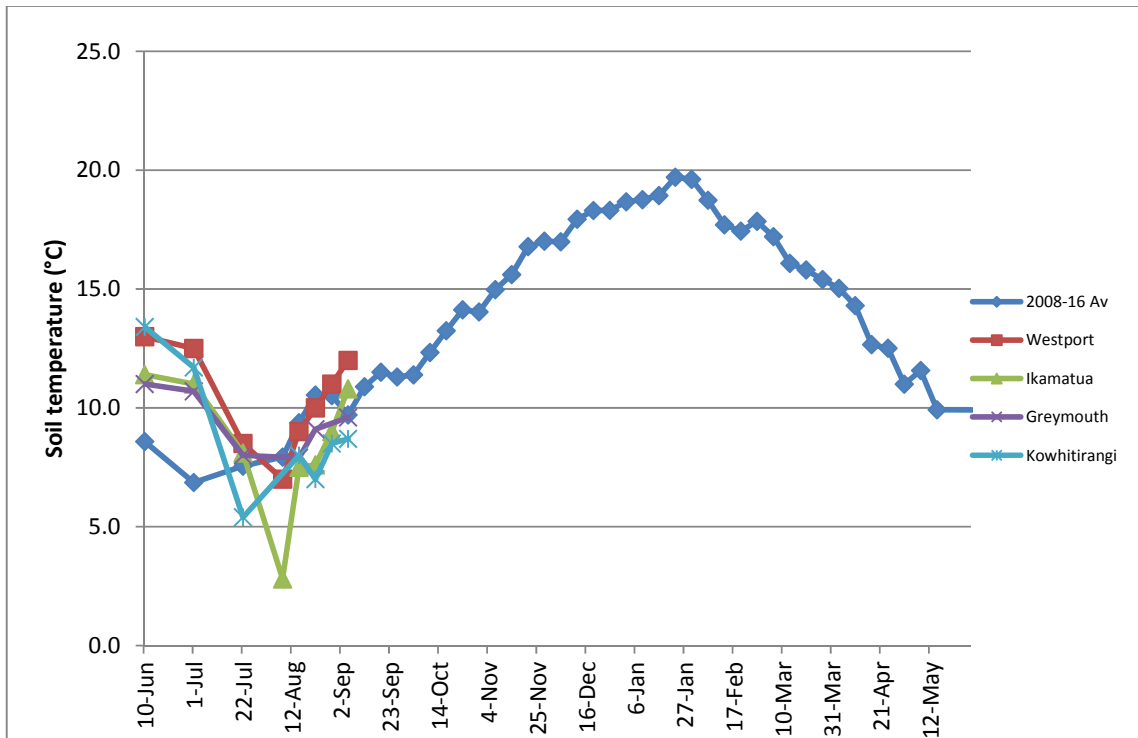
	Westport	Ikamatua	Greymouth	Kowhitirangi
Average cover (kg DM/ha)	1890	1998	1832	1818
APC	1942	1998	1898	1822
Rotation length (days)	23	30	23	31
Stocking rate	2.5	3.0	2.2	2.2
Percentage in milk	85	82	83	90
Milksolids kg/cow	1.9	1.95	2.02	1.52
Milksolids kg/ha	4.0	5.8	3.8	2.8
MS/cow (season to date)	28	29	31	26
MS/ha (season to date)	82	87	69	53
N (kg/ha) year to date	22	17	54	0
Current N application rate kg N/ha	20	30	25	None
	8 Aug	9 Aug		10 Aug
DM%	19.1	17.8		21.1
Pasture ME	12.1	12.7		12.7
Pasture NDF	46.2	35.7		37.3
Pasture CP	23.3	18.3		17.6
Target Intake (kg DM/cow/d)	15	18	19	16
Supplement (kg/cow/day)	2.0	4.0	5.5	4.5
Soil temperature (°C)	11	9.4	9.2	12.3
Growth Rate (kg DM/day)	19	25	9	22
Rainfall	31	10	20	19
Conditions for farmwalk	Nice, warm fine day	Beautiful day		Fine
Comments	been cold wet week			

NB: pasture quality data are for 1 sample collected from each farm

## Weekly Pasture Growth Rates

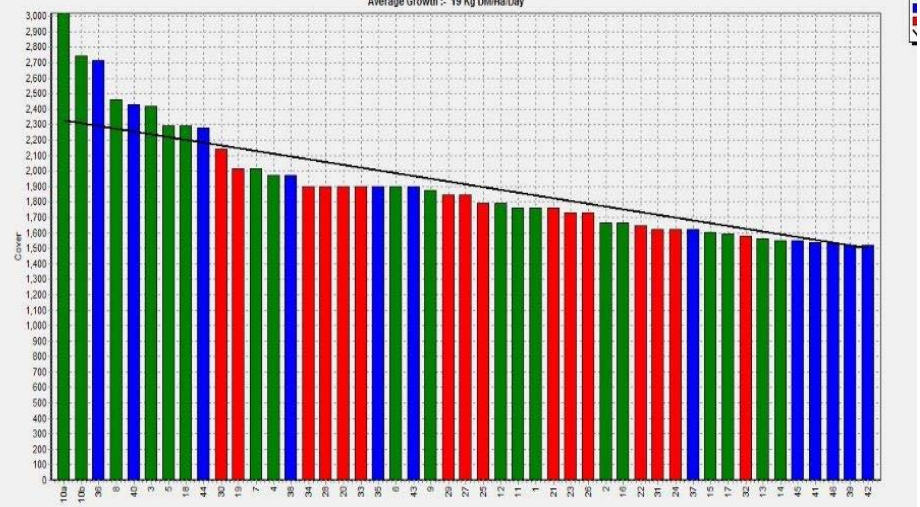


## Weekly Soil Temperature



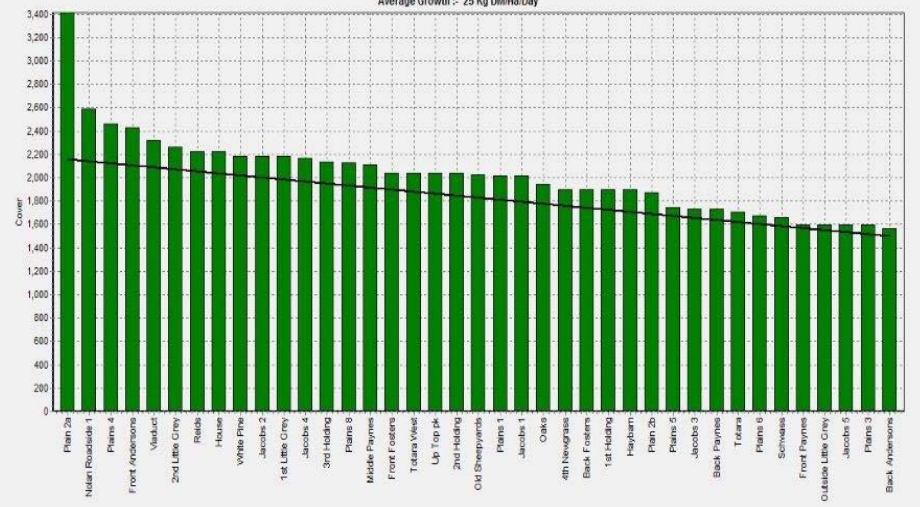
### Westport

Farm Name:- ADRIAN & CHERYL GALLAGHER  
 Date Read :- 9/12/2016  
 Average Cover :- 1890 Kg DM/Ha  
 Average Growth :- 19 Kg DM/Ha/Day



### Ikamatua

Farm Name:- ANDREW & NIKI MIRFIN  
 Date Read :- 9/12/2016  
 Average Cover :- 1993 Kg DM/Ha  
 Average Growth :- 25 Kg DM/Ha/Day



### Greymouth

Farm Name:- ANDREW ROBB  
 Date Read :- 9/14/2016  
 Average Cover :- 1832 Kg DM/Ha  
 Average Growth :- 9 Kg DM/Ha/Day



### Kowhitirangi

Farm Name:- TANE & RACHEL LITTLE  
 Date Read :- 9/14/2016  
 Average Cover :- 1819 Kg DM/Ha  
 Average Growth :- 22 Kg DM/Ha/Day

