

Westland Monitor Farm Project

Weekly Update 16 December 2016

CO comment

A new addition to the Monitor farm programme this season has been the assessment of Body Condition Scores at several critical times during the season. The first assessment has recently been carried out and the herd averages and ranges are as follows: Kowhitirangi 4.0 (3.5-4.5); Greymouth 4.2 (3.5-5.0); Ikamatua 4.1 (3.5-5.5); Westport 4.2 (3.5-5.0). The climatic challenges all farmers have had this season would have undoubtedly affected BCS this season, but typically a mature mixed age cows, calving at a target BCS of 5.0 should have a BCS of around 4.3 at this stage of the season. Managing body condition score is all about managing your herd's nutrition and lactation programme. Condition scoring your cows at critical times throughout the year lets you know if you need to consider changing herd nutrition or shortening the lactation of some cows. It's common to find a lot of variation in the condition score of cows within the herd. Rising 3-year olds and early calving cows tend to calve in poorer condition than the rest of the herd. These groups need extra protection during late lactation and in the dry period if they are to achieve target condition score at calving. The purpose of calculating (and graphing) your herd's average condition score is to ensure herd condition score is following a critical path towards achieving targets. The range of condition score within your herd is used to assess what percentage of the herd you need to do something about. For example, what percentage of cows should get preferential feeding, or how many cows should you be thinking about drying off.

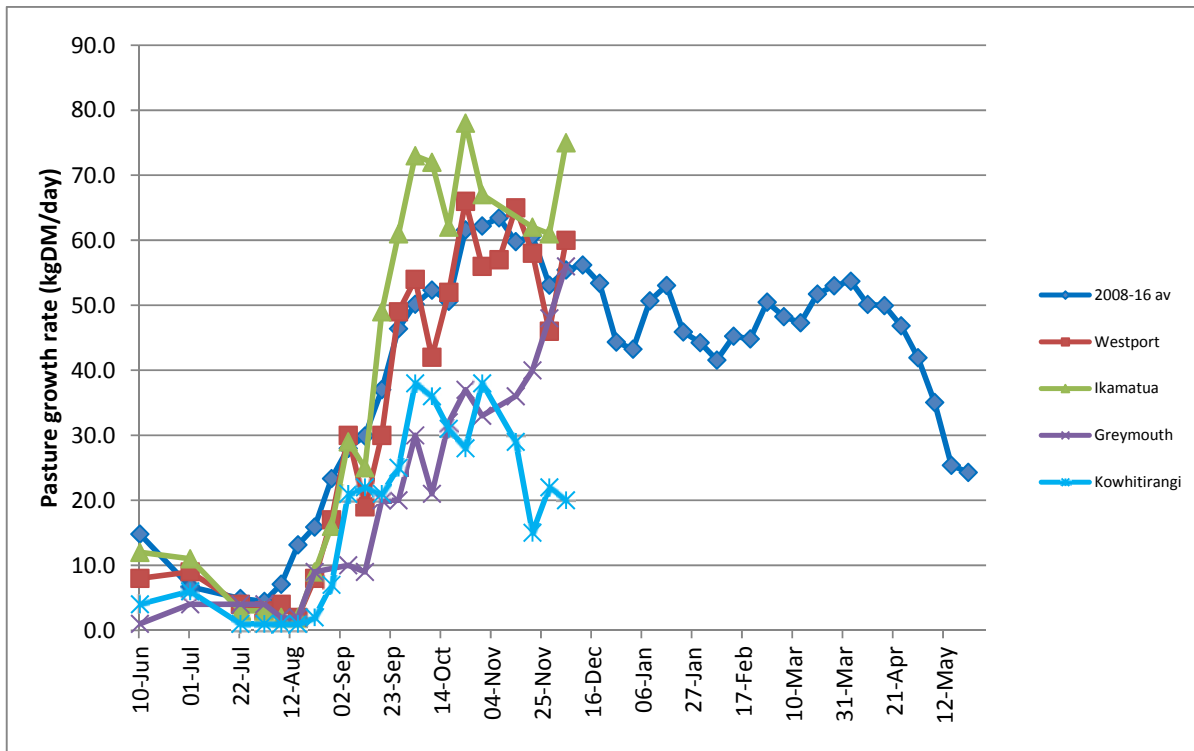
If you are interested in viewing the full summary of monitoring results, follow this link [West Coast Monitor Farm Full Summary](#)

Farm Summary

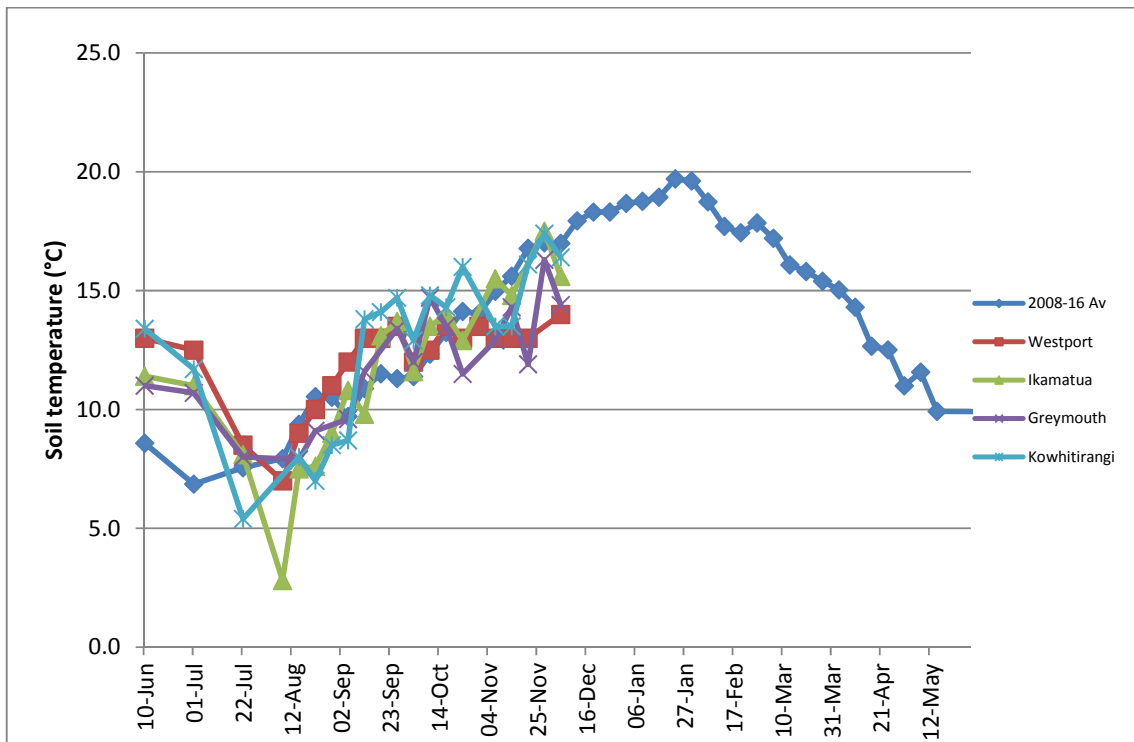
	Westport	Ikamatua	Greymouth	Kowhitirangi
Average cover (kg DM/ha)	2034	2135	1967	1807
APC (8 December)	2022	2070	1968	1771
Rotation length (days)	17	22	20	
Stocking rate	2.8		2.5	
Percentage in milk	100	100	100	100
Milksolids kg/cow	1.83		1.75	
Milksolids kg/ha	5.1		4.4	
MS/cow (season to date)	186		230	
MS/ha (season to date)	532		510	
N (kg/ha) year to date	83		133	
Current N application rate kg N/ha	20		20	
	5 Dec	6 Dec	30 Nov	7 Dec
DM%	17.7	16.8	15.3, 18.2	12.9
Pasture ME	>12.6	>12.7	>12.7, 12.2	12.6
Pasture NDF	43.8	43.7	43.2, 46.8	41.0
Pasture CP	29.4	23.6	29.4, 21.8	29.0
Target Intake (kg DM/cow/d)	18	20	20	
Supplement (kg/cow/day)	1.0	2.5	3.1	
Soil temperature (°C)	14.0	15.6	14.4	16.4
Growth Rate (kg DM/day)	60	75	56	20
Rainfall	89	60	50.5	
Conditions for farmwalk	Fine, cold, wet underfoot	Fine		Very wet
Comments				

NB: pasture quality data are for 1 sample collected from each farm

Weekly Pasture Growth Rates

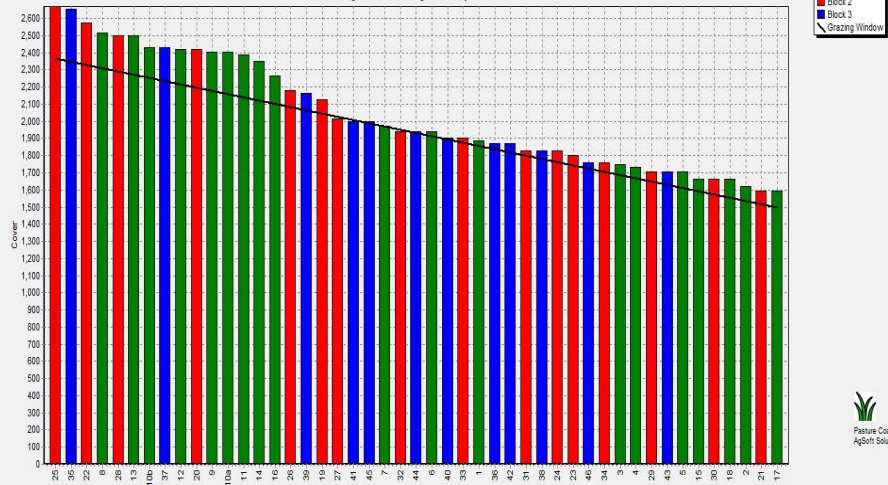


Weekly Soil Temperature



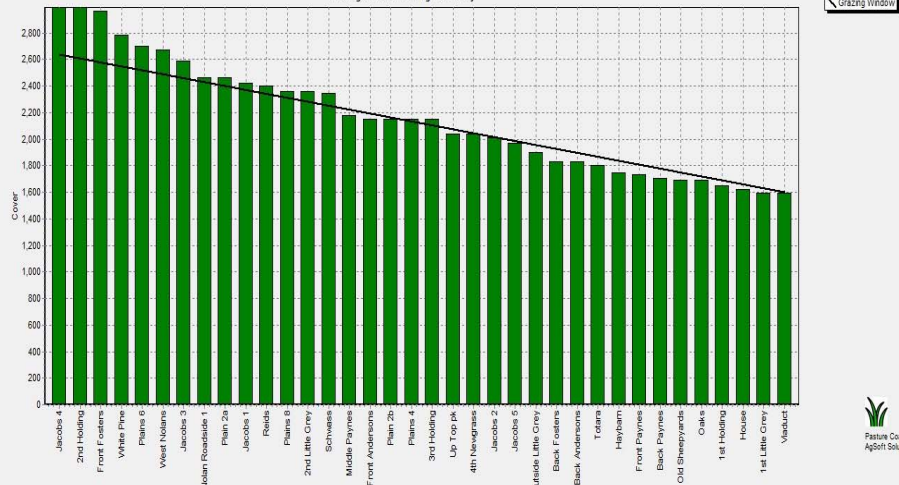
Westport

Farm Name:- ADRIAN & CHERYL GALLAGHER
 Date Read :- 12/12/2016
 Average Cover :- 2034 Kg DM/Ha
 Average Growth :- 60 Kg DM/Ha/Day



Ikamatua

Farm Name:- ANDREW MURFIN
 Date Read :- 13/12/2016
 Average Cover :- 2135 Kg DM/Ha
 Average Growth :- 75 Kg DM/Ha/Day



Greymouth

Farm Name:- ANDREW ROBB
 Date Read :- 12/14/2016
 Average Cover :- 1967 Kg DM/Ha
 Average Growth :- 56 Kg DM/Ha/Day



Kowhitirangi

Farm Name:- TANE & RACHEL LITTLE
 Date Read :- 12/14/2016
 Average Cover :- 1807 Kg DM/Ha
 Average Growth :- 20 Kg DM/Ha/Day



