

Westland Monitor Farm Project

Weekly Update 17 November 2016

CO comment

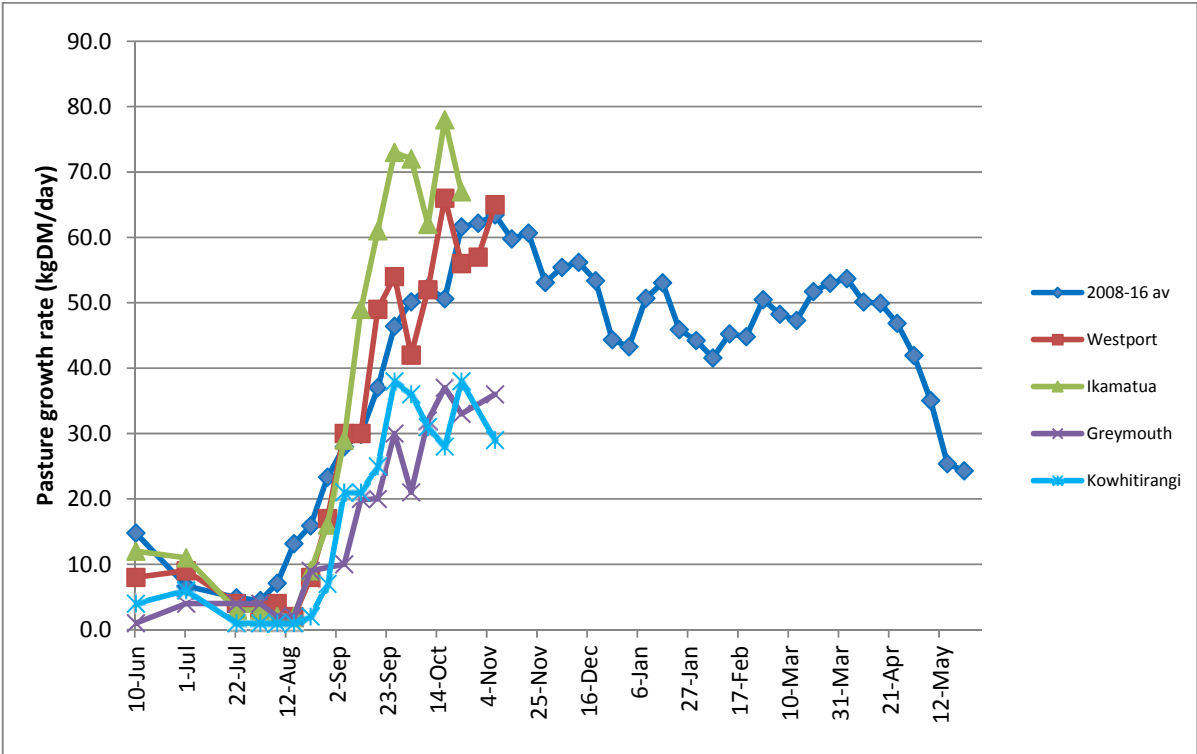
In a spring like the one we are currently experiencing, with seemingly constant wet ground conditions, where the focus is on maximising milk production and reproductive performance of cows, it can be easy to overlook the replacement heifer calves. Achieving target weaning liveweight's is critical if their performance targets are to be met further down the track. Basing decisions on a measured liveweight is going to be far more effective than weaning decisions based on age or guesswork. With a large proportion of Kiwi Cross cows in many herds, having your calves on MINDA Weights will make it a lot easier to establish and monitor liveweight gain against a specific and accurate target for your farm. Once weaned onto pasture, keep providing access to meal, or other suitable protein rich feedstuffs, at up to 2kg/head/day, gradually reducing this over the next few months. Check the liveweight progress by regular weighing's and animals not putting on weight should be pulled out for preferential feeding. For further information, check out <http://www.dairynz.co.nz/page/pageid/2145861361/Weaning> and <http://www.dairynz.co.nz/publications/farmfacts/animal-health-welfare-and-young-stock/farmfact-3-22/>

Farm Summary

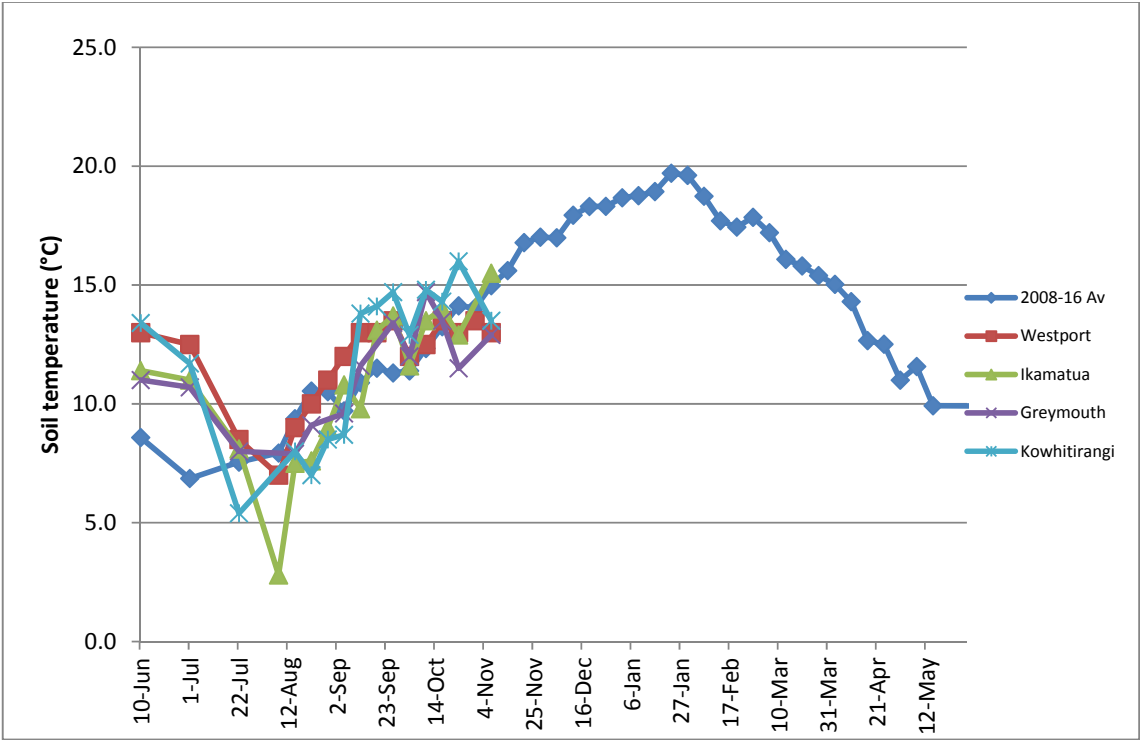
	Westport	Ikamatua	Greymouth	Kowhitirangi
Average cover (kg DM/ha)	2157		1947	1883
APC (10 November)	2089			
Rotation length (days)	19	22	20	
Stocking rate	2.8	2.6	2.5	2.3
Percentage in milk	100	100	100	100
Milksolids kg/cow	2.16	2.06	2.00	
Milksolids kg/ha	4.6	5.3	5.1	
MS/cow (season to date)	143	120	170	
MS/ha (season to date)	409	340	377	
N (kg/ha) year to date	65	80	91	
Current N application rate kg N/ha	15	30	20	
	10 Oct	11 Oct		12 Oct
DM%	16.9	12.9		12.8
Pasture ME	12.7	12.7		12.7
Pasture NDF	46.2	42.2		42.3
Pasture CP	32.7	27.3		25.5
Target Intake (kg DM/cow/d)	18	20	21	
Supplement (kg/cow/day)	1.5	2.0	6.0	
Soil temperature (°C)	13.0	15.5	12.9	13.5
Growth Rate (kg DM/day)	65		36	29
Rainfall	67	70	115	
Conditions for farmwalk	Showers	Fine		Heavy rain. Farm so wet. No more rain please
Comments				

NB: pasture quality data are for 1 sample collected from each farm

Weekly Pasture Growth Rates

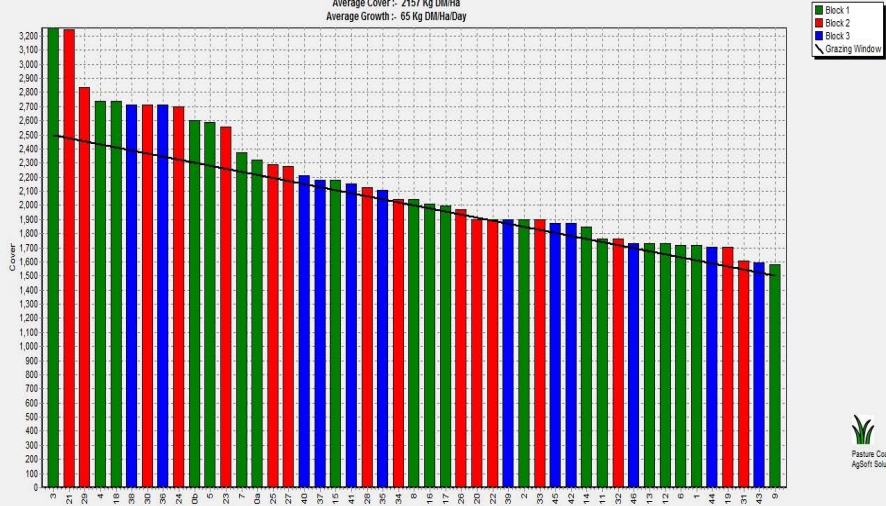


Weekly Soil Temperature



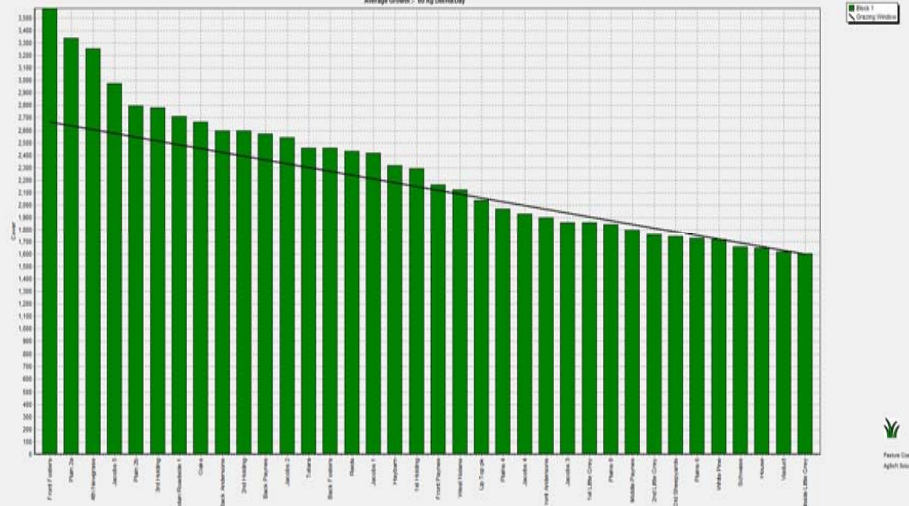
Westport

Farm Name: CHERYL GALLAGHER
 Date Read : 14/11/2016
 Average Cover : 2157 Kg DM/Ha
 Average Growth : - 65 Kg DM/Ha/Day



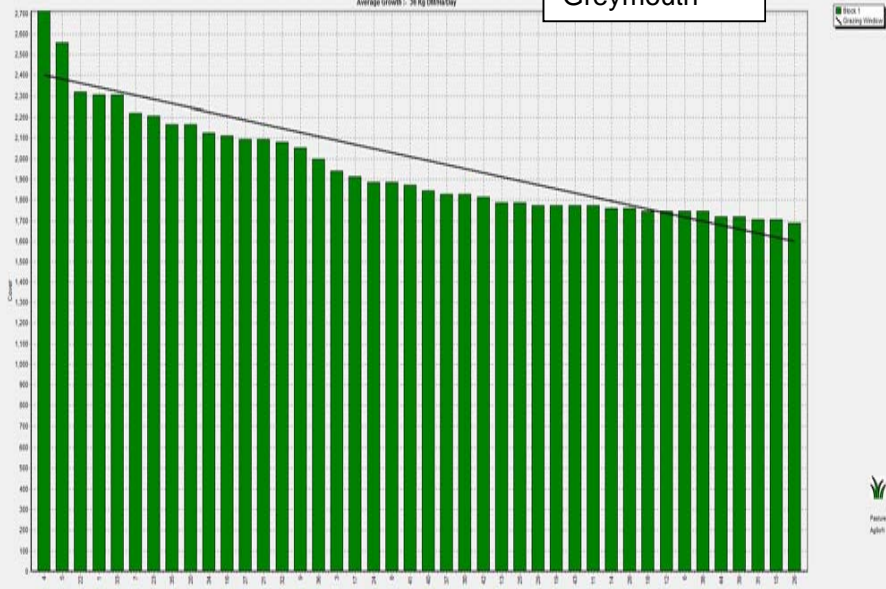
Ikamatua

Farm Name: ANDREW BROWN
 Date Read : 15/11/2016
 Average Cover : 2208 Kg DM/Ha
 Average Growth : - 89 Kg DM/Ha/Day



Greymouth

Farm Name: ANDREW BROWN
 Date Read : 16/11/2016
 Average Cover : 1947 Kg DM/Ha
 Average Growth : - 36 Kg DM/Ha/Day



Kowhitirangi

Farm Name: TANE & RACHEL LITTLE
 Date Read : 16/11/2016
 Average Cover : 1923 Kg DM/Ha
 Average Growth : - 29 Kg DM/Ha/Day

