

Westland Monitor Farm Project

Weekly Update 18 February 2016

CO comment

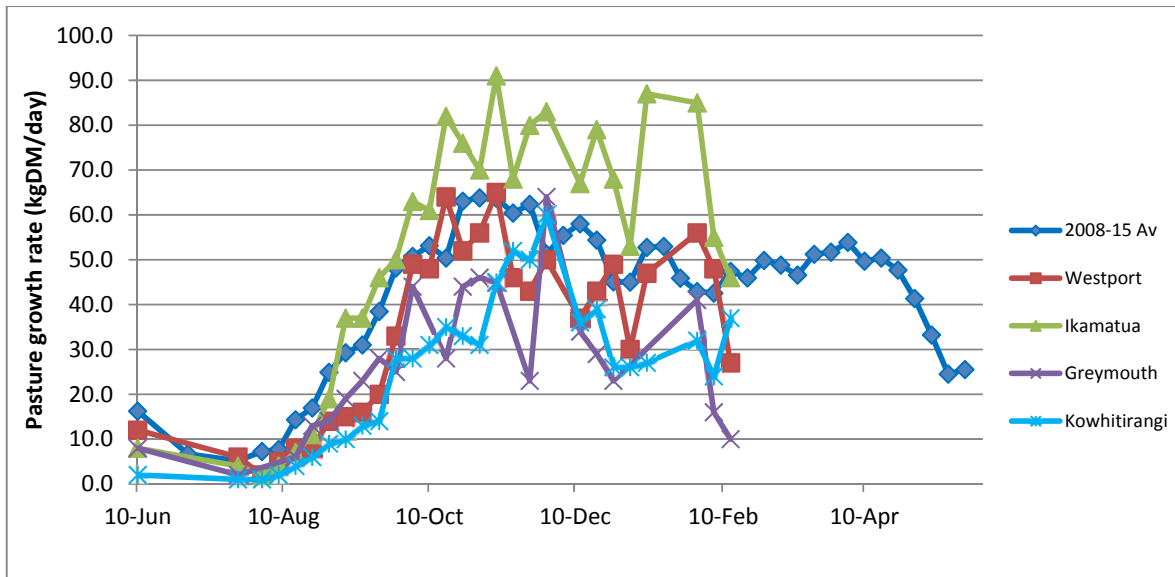
With the season about two thirds completed, now would be a good time to sit down with staff to plan the rest of the season and start the discussion about next season. Take the time to carry out performance appraisals with your staff and update any training plans. This would be a good opportunity to find out if their roles are challenging enough and also to discuss opportunities for further personal development. If staff are leaving it is always useful to ensure that you have a good transition process and carry out an exit interview. If recruiting, develop a clear process to deal with the applications and sort out potential interviewees. For more information, there is a vast resource available on DairyNZ's HR site (<http://www.peoplesmart.co.nz/>).

Farm Summary

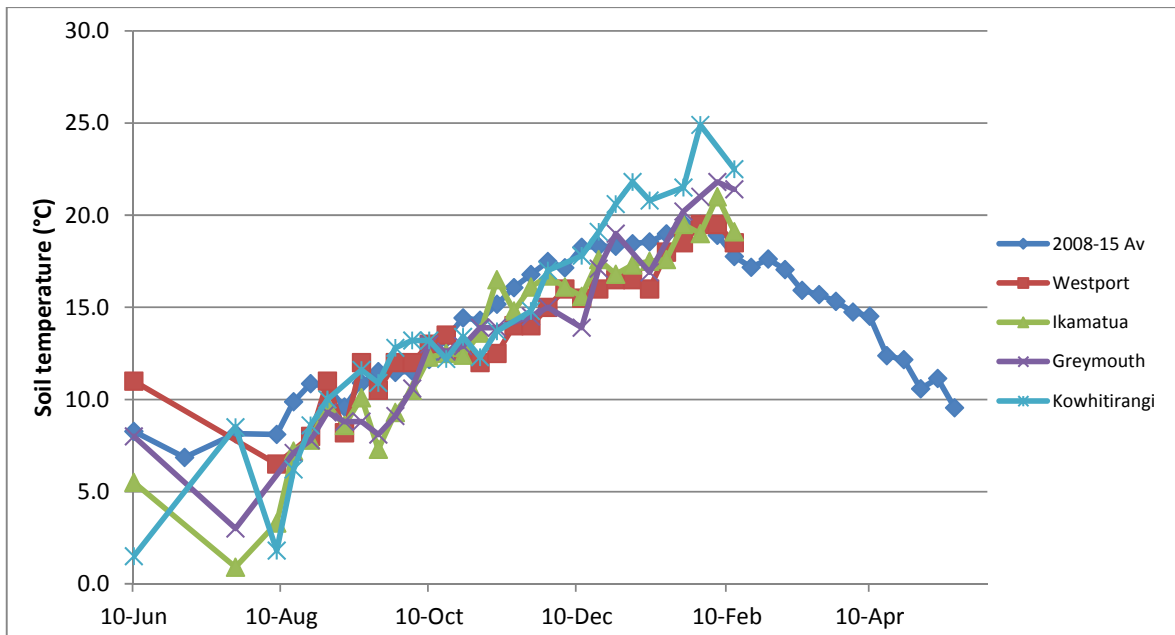
	Westport	Ikamatua	Greymouth	Kowhitirangi
Average cover (kg DM/ha)	2012	2108	2055	1998
APC (11 February)	2123	2332	2180	1911
Rotation length (days)	21	28	21	28
Stocking rate	2.8	2.6	2.5	2.3
Percentage in milk	100	100	100	100
Milksolids kg/cow	1.75	1.51	1.48	
Milksolids kg/ha	4.8	3.8	3.7	
MS/cow (season to date)	326.3	292.4	313.4	
MS/ha (season to date)	835	681	727	
N (kg/ha) year to date	143	238	253	60
Current N application rate kg N/ha	15	30	25	None
	29/1/16	29/1/16	29/1/16	29/1/16
DM%	11.9	13.4		13.4
Pasture ME	12.4	12.7		12.0
Pasture NDF	55.5	51.4		53.9
Pasture CP	26.0	26.8		23.4
Target Intake (kg DM/cow/d)	18	20	18	18
Supplement (kg/cow/day)	1.0	2.5	2.0	1.0
Soil temperature (°C)	18.5	19.1	21.4	22.5
Growth Rate (kg DM/day)	27	46	10	37
Rainfall				1
Conditions for farmwalk	Hot farm getting very dry	Growth only under pivot very dry		Farm was not so dry as others Very heavy rain on day of walk
Comments				

NB: pasture quality data are for 1 sample collected from each farm

Weekly Pasture Growth Rates

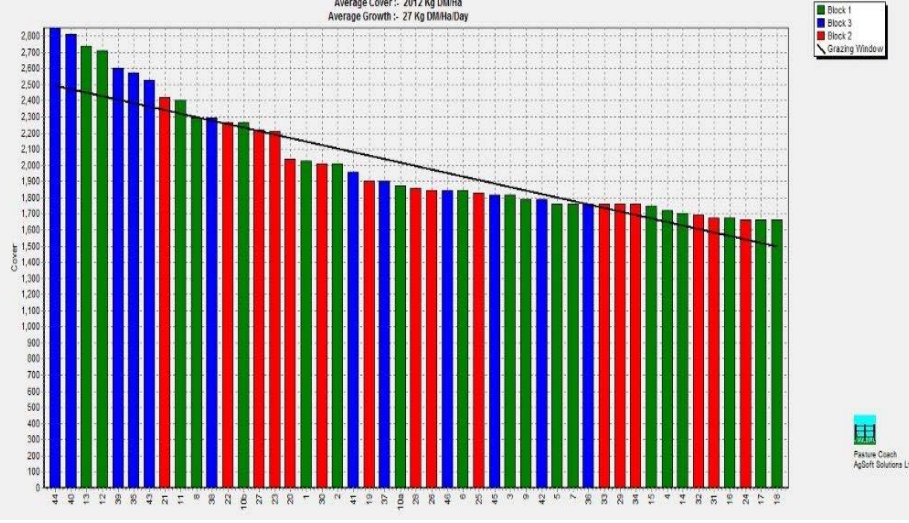


Weekly Soil Temperature



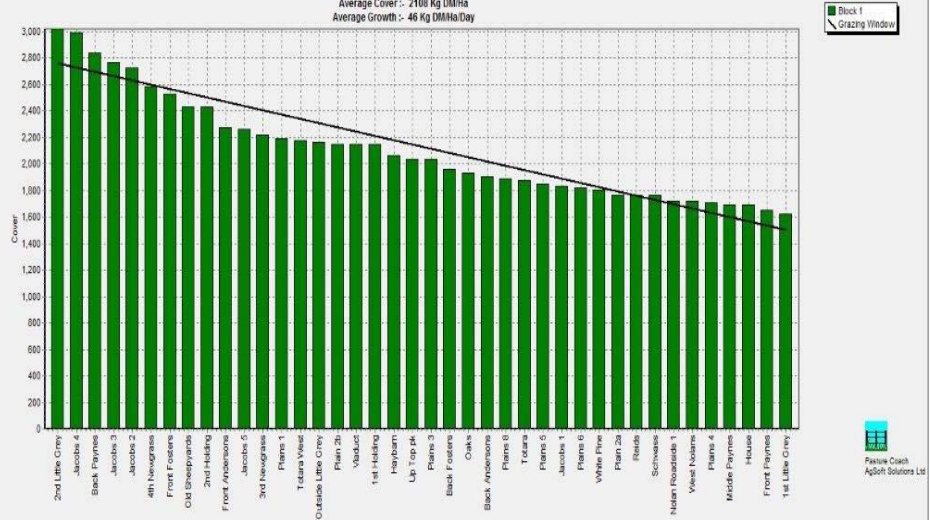
Westport

Farm Name: ANDRIAN & CHERYL GALLAGHER
 Date Read: 2/15/2016
 Average Cover: 2012 Kg DM/Ha
 Average Growth: 27 Kg DM/Ha/Day



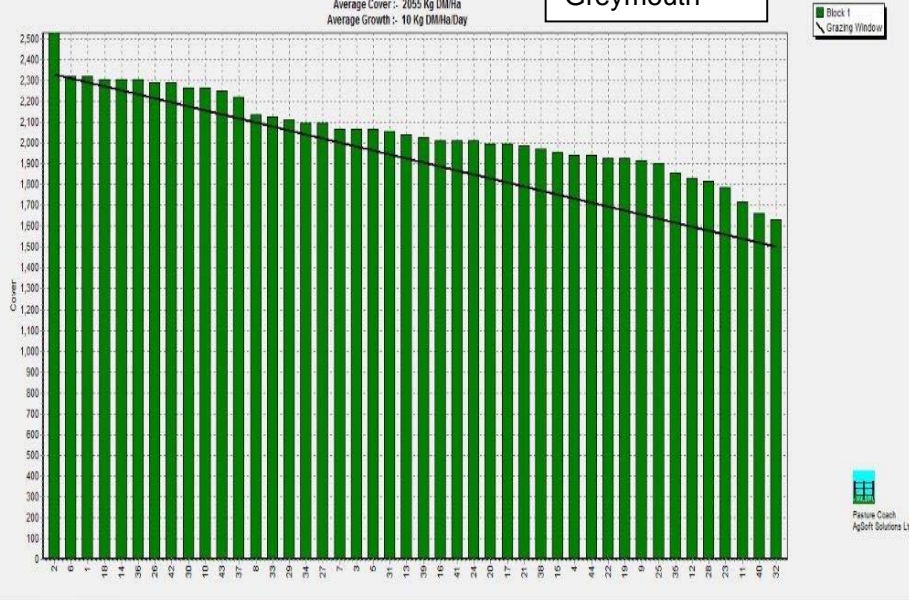
Ikamatua

Farm Name: ANDREW & NIKI MIRFIN
 Date Read: 2/16/2016
 Average Cover: 2400 Kg DM/Ha
 Average Growth: 46 Kg DM/Ha/Day



Greymouth

Farm Name: ANDREW ROBB
 Date Read: 2/16/2016
 Average Cover: 2055 Kg DM/Ha
 Average Growth: 10 Kg DM/Ha/Day



Kowhitirangi

Farm Name: TANE & RACHEL LITTLE
 Date Read: 2/17/2016
 Average Cover: 1990 Kg DM/Ha
 Average Growth: 37 Kg DM/Ha/Day

