

# Westland Monitor Farm Project

Weekly Update 18 March 2016

## CO comment

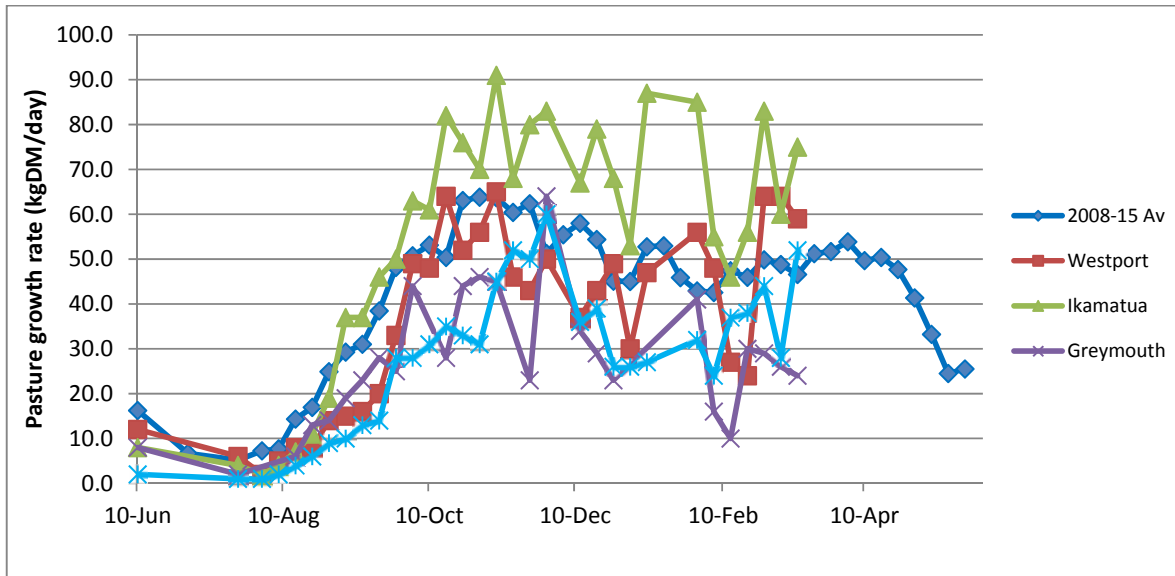
Now is the time to start scoping out next season financially and looking at the likely financial result under the scenarios available to you. Your financier is likely to be asking you for your financial plan for next season, so that they too can start planning for possible payout outcomes. You will place yourself in a far stronger position if you are the one asking them the questions than them asking you – chances are that with prior planning you will already have anticipated a lot of the questions they will have and have had time to work through different scenarios. Planning now will help put you in the best cash position possible for the season. Make sure you have the best information possible to keep your budget accurate. Talk to as many people as possible to get as wide a view on the outlook as you can get. This will help you with your decision making through the late lactation period when drying off and culling decisions will need to be made. There have been some valuable learnings gained over the past two seasons, when expenditure has had to be tightly controlled to maintain as much profitability as possible. Farming systems have been modified to suit the current financial conditions and there have been surprises as to what can actually be achieved without the additional spending.

## Farm Summary

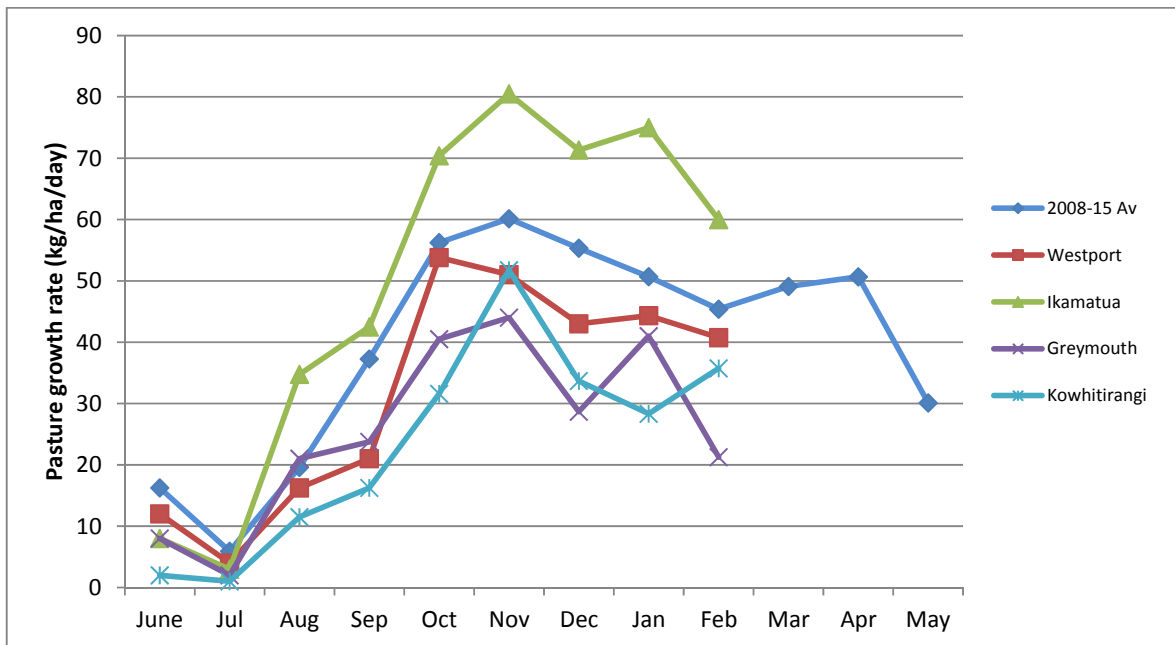
	Westport	Ikamatua	Greymouth	Kowhitirangi
Average cover (kg DM/ha)	2225	2215	2162	1921
APC (10 March)	2196	2284	2167	2119
Rotation length (days)	22	25	21	28
Stocking rate	2.7	2.6	2.1	2.3
Percentage in milk	91		85	97
Milksolids kg/cow	1.67	1.53	1.38	1.30
Milksolids kg/ha	4.4	3.8	2.9	3.0
MS/cow (season to date)	350.1	314.1	332.9	257.1
MS/ha (season to date)	963	789	819	569
N (kg/ha) year to date	175	276	284	None
Current N application rate kg N/ha	20	30	20	60
	26/2/16	26/2/16	26/2/16	26/2/16
DM%	15	13.1		13.8
Pasture ME	12.1	12.0		11.5
Pasture NDF	46.9	46.6		51.4
Pasture CP	27.3	28.2		24.3
Target Intake (kg DM/cow/d)	18	18	18	18
Supplement (kg/cow/day)	1.9	4.0	1.0	1.0
Soil temperature (°C)	17.0	17.0	17.6	16.7
Growth Rate (kg DM/day)	59	75	24	52
Rainfall	51	5	120.5	94.5
Conditions for farmwalk	Hot fine	Fine warm		Rain cold
Comments				

NB: pasture quality data are for 1 sample collected from each farm

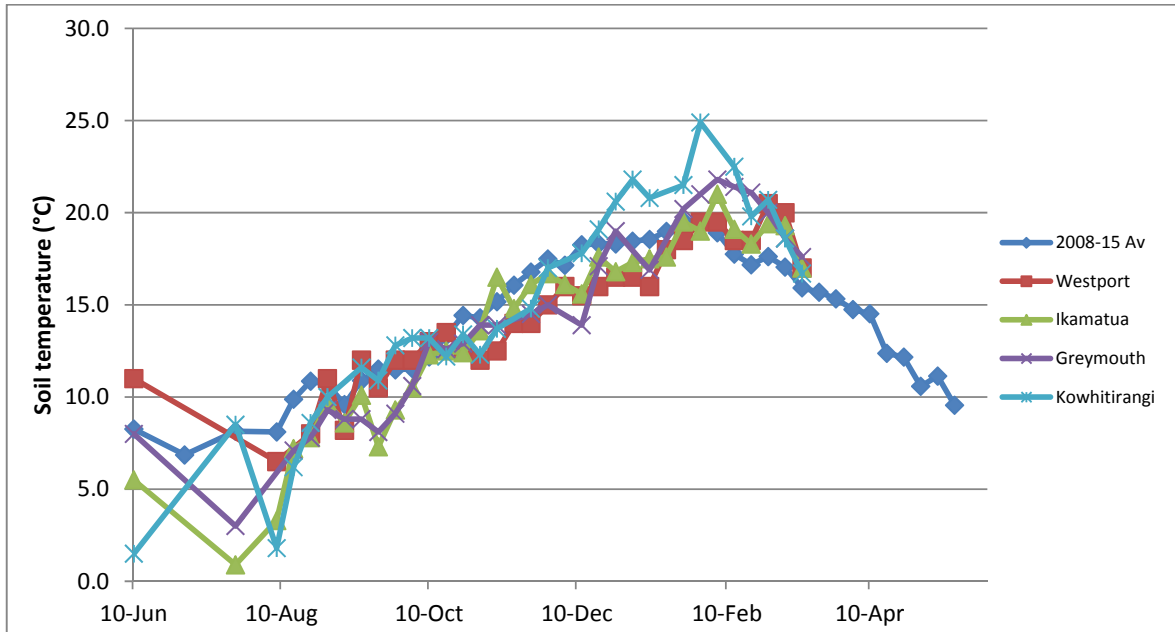
### Weekly Pasture Growth Rates



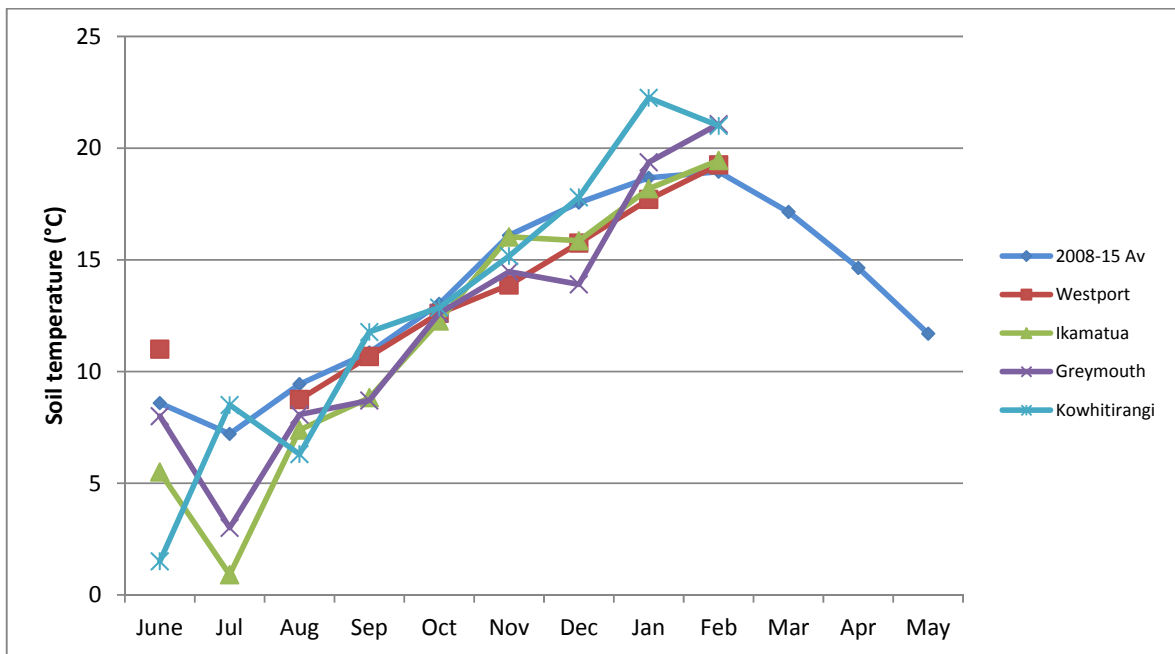
### Average monthly growth rate for each region compared with the 6 year average



Weekly Soil Temperature

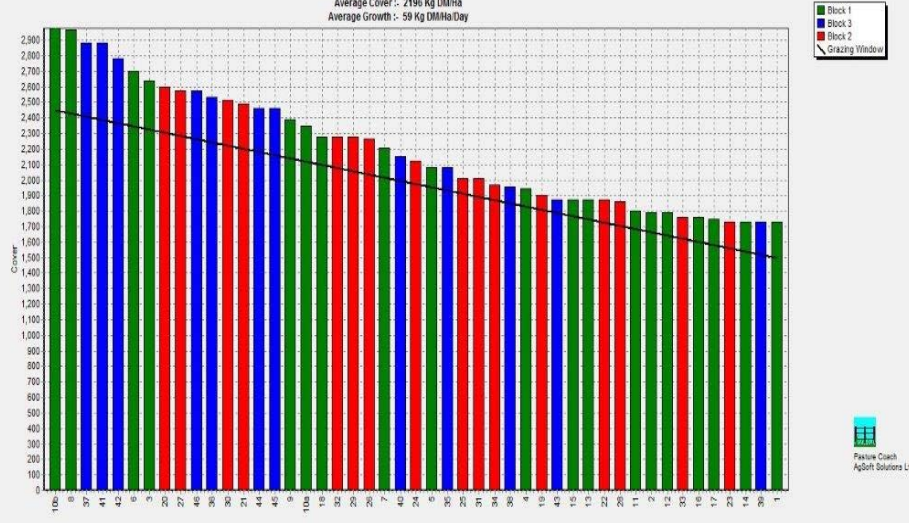


Average monthly soil temperature for each region compared with the 6 year average



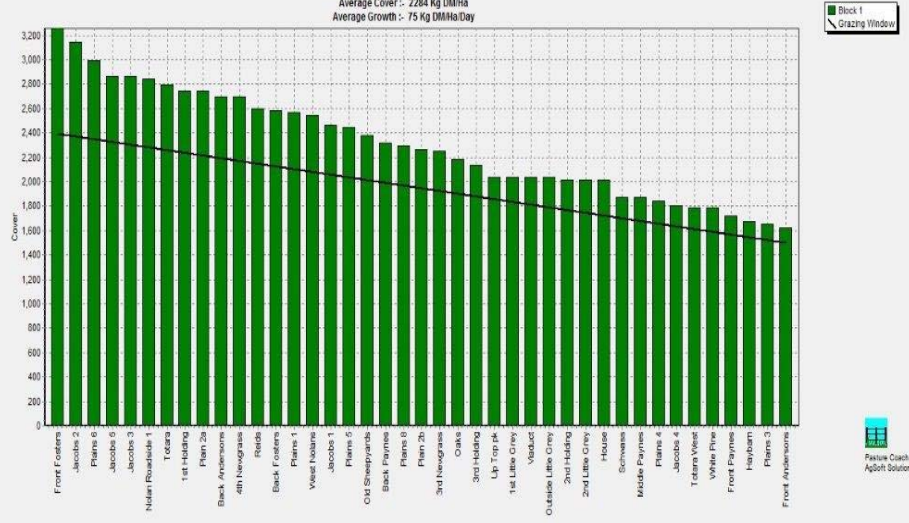
### Westport

Farm Name: ADRIAN & CHERYL GALLAGHER  
 Date Read: 31/4/2016  
 Average Cover: 2196 Kg DM/ha  
 Average Growth: 59 Kg DM/ha/Day



### Ikamatua

Farm Name: ANDREW & NIKI MURFIN  
 Date Read: 31/5/2016  
 Average Cover: 2284 Kg DM/ha  
 Average Growth: 75 Kg DM/ha/Day



### Greymouth

Farm Name: ANDREW ROBB  
 Date Read: 31/5/2016  
 Average Cover: 2167 Kg DM/ha  
 Average Growth: 24 Kg DM/ha/Day



### Kowhitirangi

Farm Name: TANE & RACHEL LITTLE  
 Date Read: 31/6/2016  
 Average Cover: 2119 Kg DM/ha  
 Average Growth: 52 Kg DM/ha/Day

