

Westland Monitor Farm Project

Weekly Update 19/8/16

CO comment

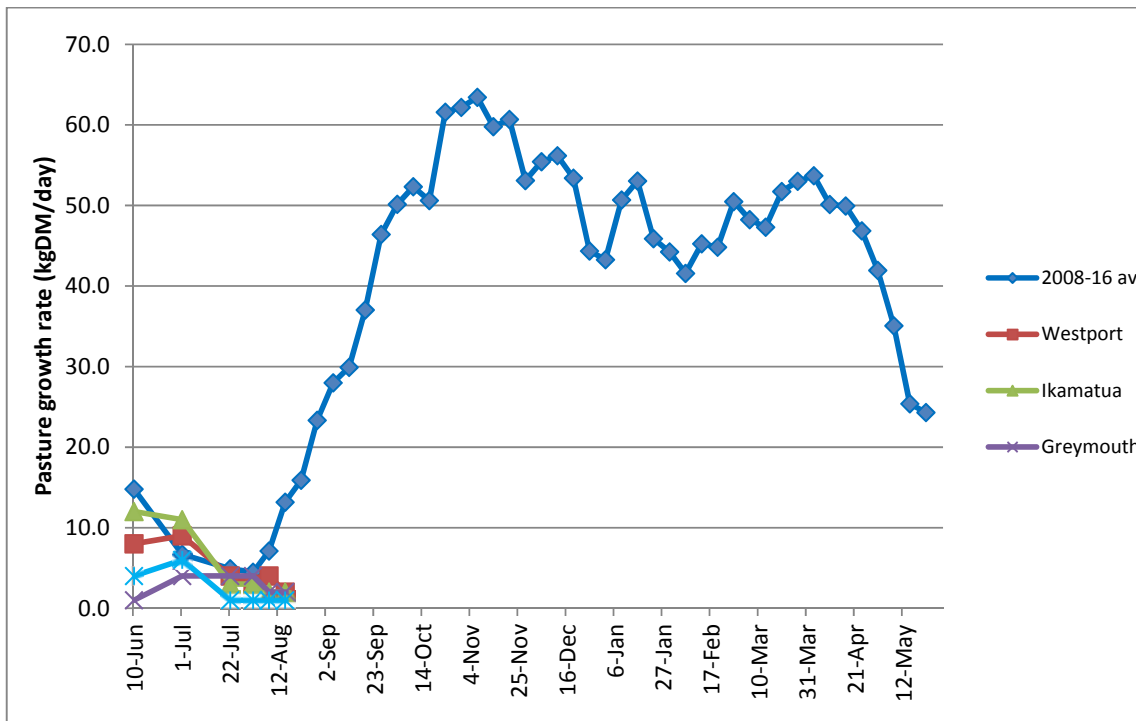
Make sure magnesium supplementation keeps being made available to all cows – both dry and calved. As we move through the spring, more of the pasture the cows will be offered will be spring grown and nitrogen boosted and naturally lower in magnesium. Try to make sure it is made available in two forms – on the supplement or pasture as well as in the trough water. Cows will vary both in the amount of pasture and water they will consume, so it makes good practical sense to cover both bases. It's also that time of the year that stock may need to be destroyed and animal welfare issues need to be acknowledged. The legal requirements have changed, so to make sure you and your staff have got it right, visit DairyNZ's website and check out <http://www.dairynz.co.nz/animal/welfare/humane-slaughter/> to make sure you are treating your stock humanely and with respect. The guideline can be downloaded and is a valuable resource to have on hand for everyone to refer to to make sure the requirements are being met.

Farm Summary

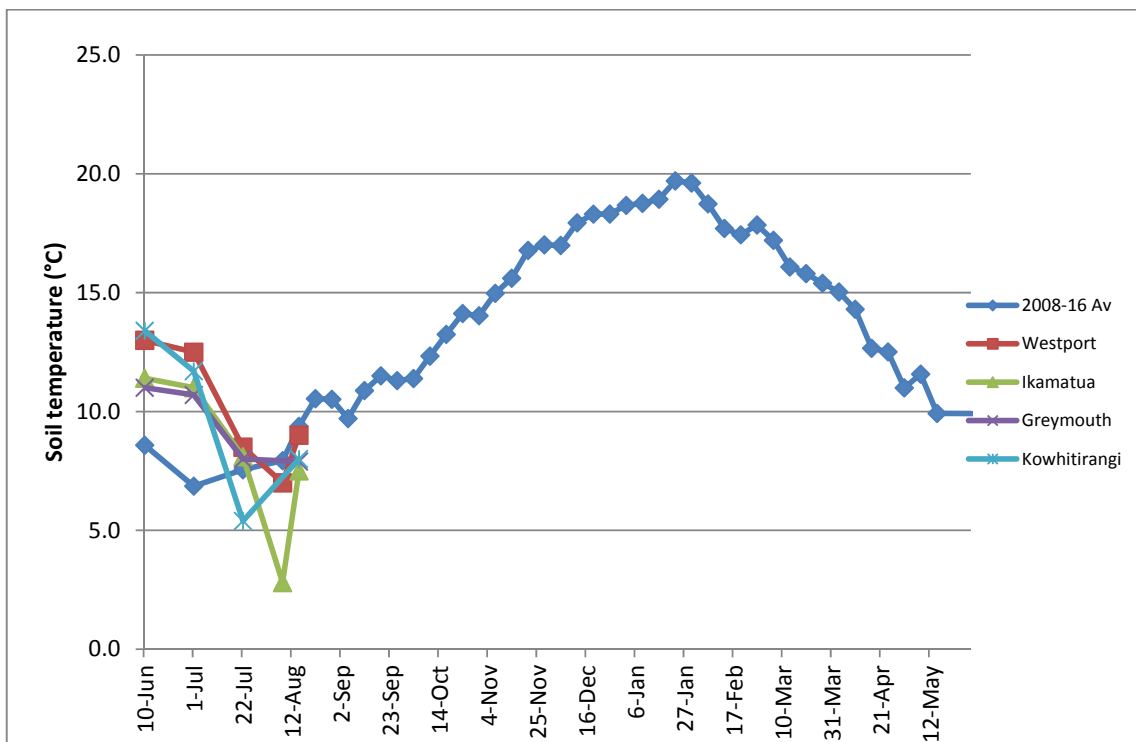
	Westport	Ikamatua	Greymouth	Kowhitirangi
Average cover (kg DM/ha)	1990	2213	1924	1847
APC (12 August)	1996	2316		1874
Rotation length (days)		70	45	
Stocking rate				
Percentage in milk	46	42	55	-
Milksolids kg/cow	1.44	-	1.72	-
Milksolids kg/ha	0.6	-	1.4	-
MS/cow (season to date)	2		5	
MS/ha (season to date)				
N (kg/ha) year to date	9		30	
Current N application rate kg N/ha	20		30	
	8 Aug	9 Aug		10 Aug
DM%	19.1	17.8		21.1
Pasture ME	12.1	12.7		12.7
Pasture NDF	46.2	35.7		37.3
Pasture CP	23.3	18.3		17.6
Target Intake (kg DM/cow/d)		18	16	
Supplement (kg/cow/day)	Ad lib PKE	3	4	
Soil temperature (°C)	9	7.5	7.9	6
Growth Rate (kg DM/day)	2	2	2	1
Rainfall	31	-	16	-
Conditions for farmwalk	Rain, week of frosts	Stunning, fine warm day		
Comments				

NB: pasture quality data are for 1 sample collected from each farm

Weekly Pasture Growth Rates

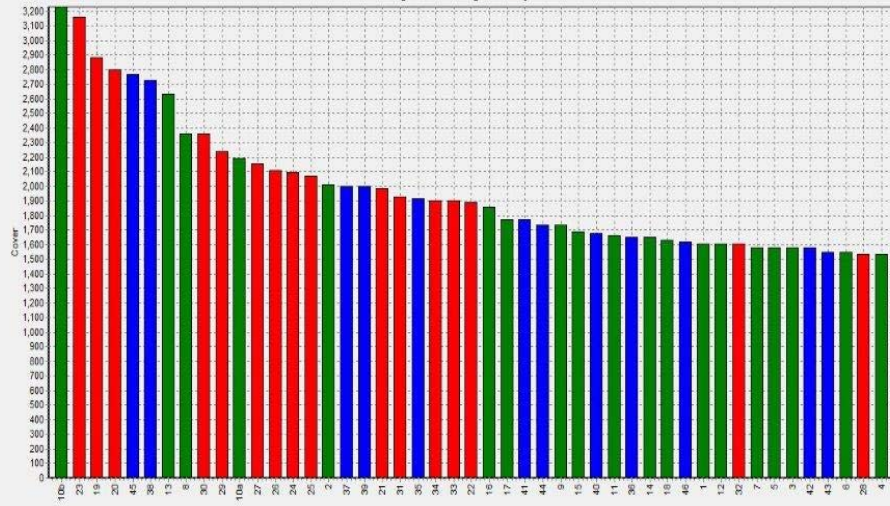


Weekly Soil Temperature



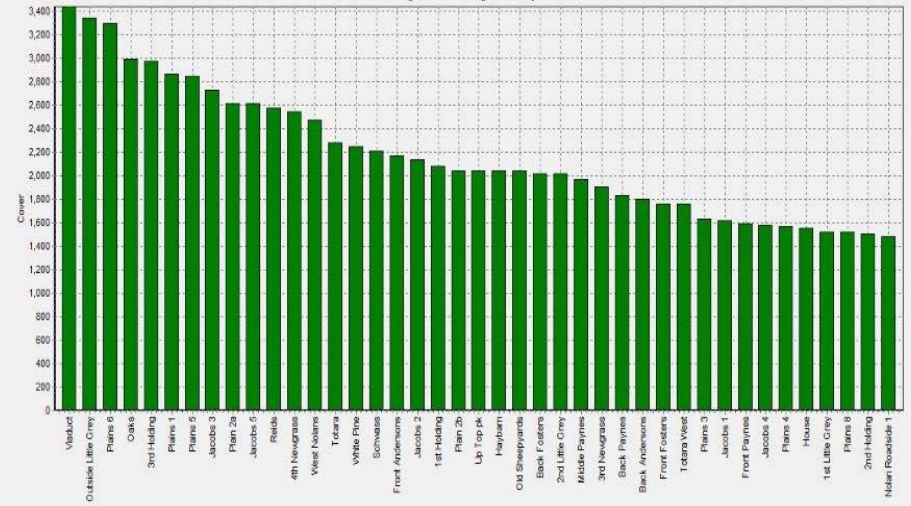
Westport

Farm Name:- ADRIAN & CHERYL GALLAGHER
 Date Read :- 8/15/2016
 Average Cover :- 1969 Kg DM/Ha
 Average Growth :- 2 Kg DM/Ha/Day



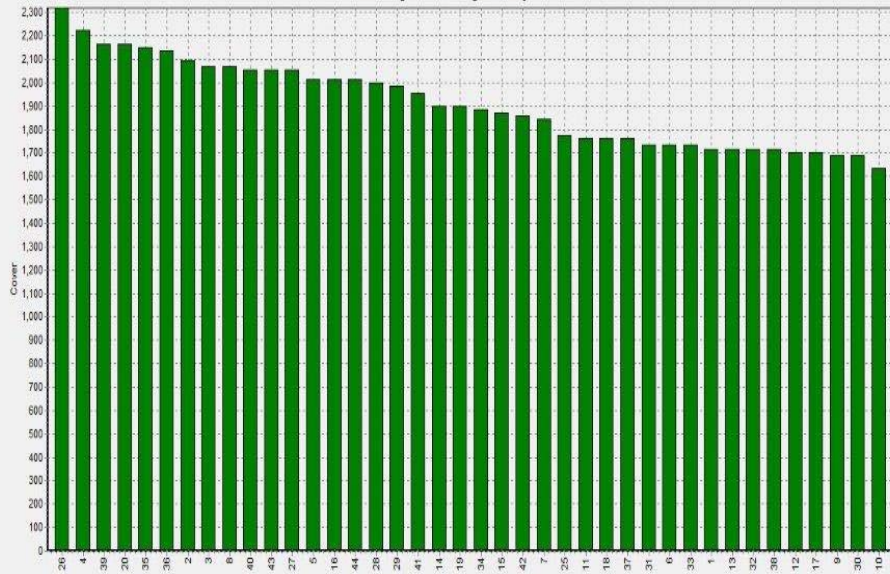
Ikamatua

Farm Name:- ANDREW & NIKI MIRFIN
 Date Read :- 8/16/2016
 Average Cover :- 2213 Kg DM/Ha
 Average Growth :- 2 Kg DM/Ha/Day



Greymouth

Farm Name:- ANDREW ROBB
 Date Read :- 8/17/2016
 Average Cover :- 1924 Kg DM/Ha
 Average Growth :- 2 Kg DM/Ha/Day



Kowhitirangi

Farm Name:- TANE & RACHEL LITTLE
 Date Read :- 8/17/2016
 Average Cover :- 1847 Kg DM/Ha
 Average Growth :- 1 Kg DM/Ha/Day

