

Westland Monitor Farm Project

Weekly Update 2 February 2017

CO comment

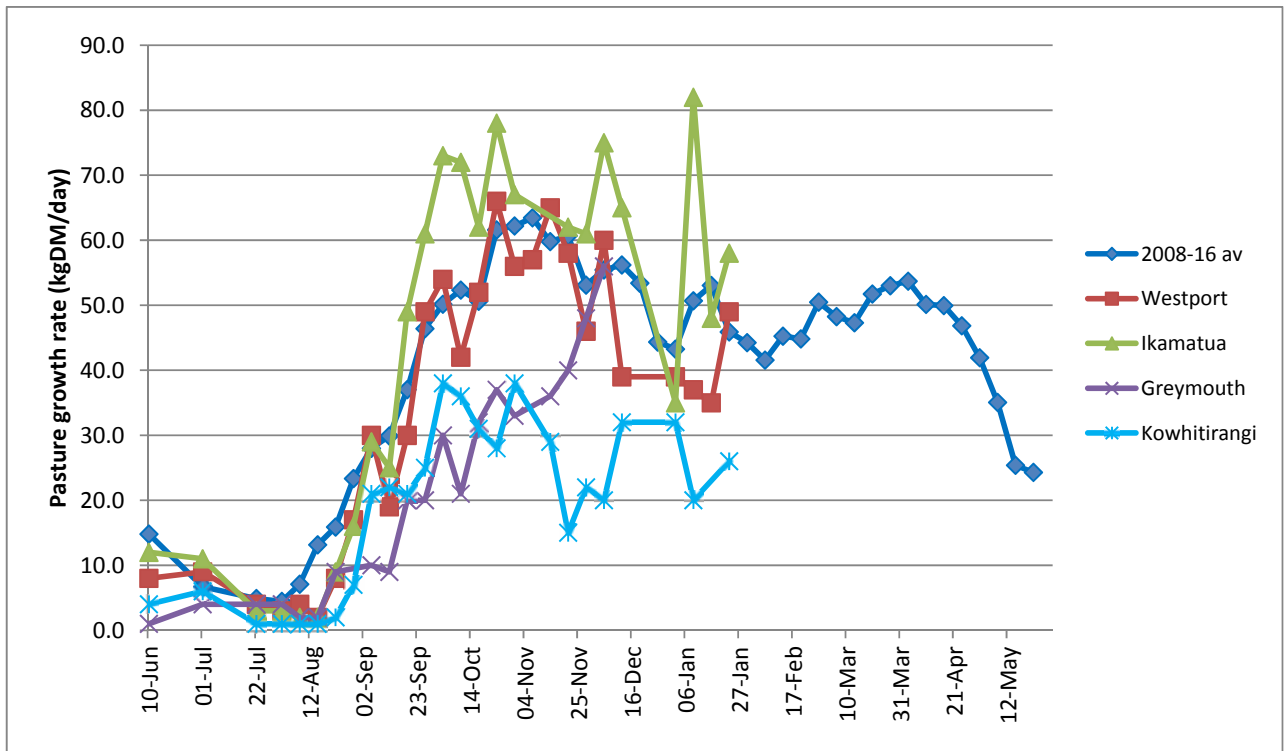
Review, re-forecast and restraint will continue to be needed from now on to ensure that the best cash position possible is generated for the current season. Results from the recent GDT auctions have indicated that the outlook is improving, but experience has shown us that we need to be wary of predicting too quick a recovery and prudence will continue to be needed with any forecasting. Make sure you have the best information possible to keep your budget accurate. Talk to as many people as possible to get as wide a view on the outlook as you can get. This will help you with your decision making through the late lactation period when drying off and culling decisions will need to be made. There have been some valuable learnings gained over the past three seasons, when expenditure has had to be tightly controlled to maintain as much profitability as possible. Farming systems have been modified to suit the current financial conditions and there have been surprises and good learnings gained as to what can actually be achieved without the additional spending. The upcoming Monitor Farm fielddays will discuss the impact that the downturn has had on the Monitor Farms and what effect that has had on the profitability of the Monitor Farms. If you are interested in viewing the full summary of monitoring results, follow this link [West Coast Monitor Farm Full Summary](#)

Farm Summary

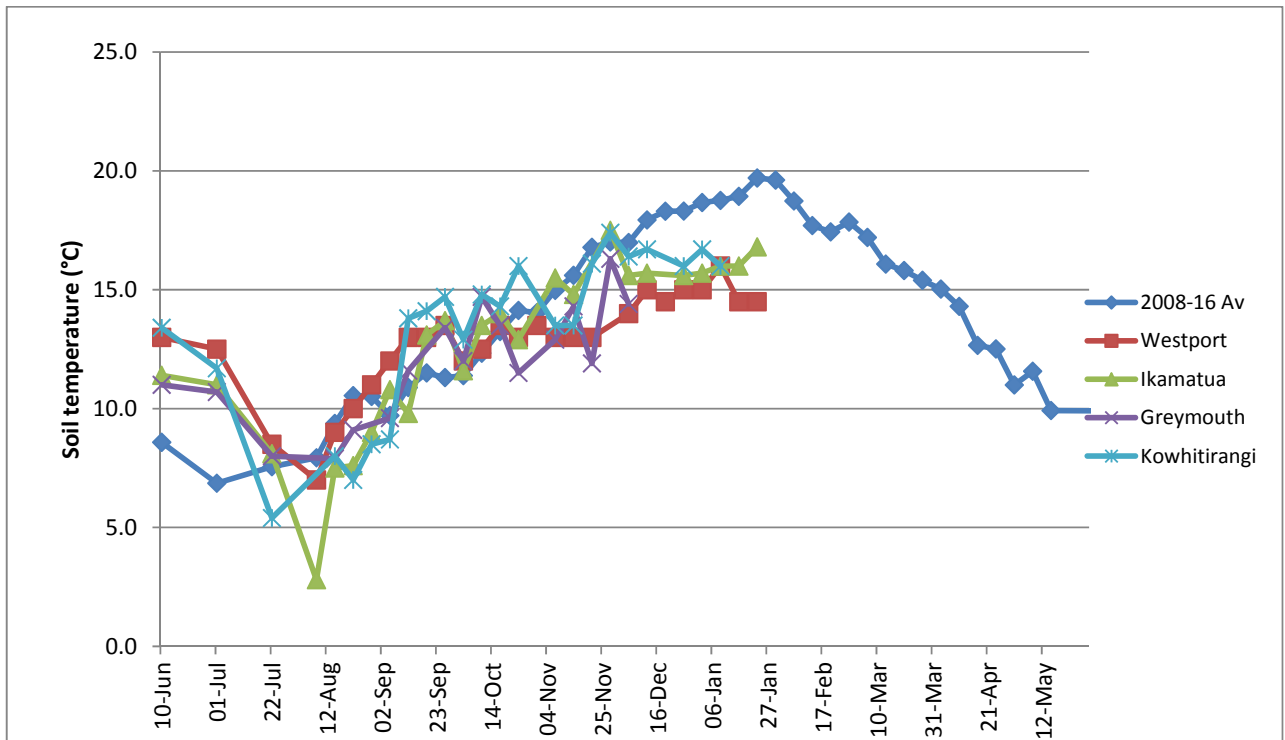
	Westport	Ikamatua	Greymouth	Kowhitirangi
Average cover (kg DM/ha)	2027	2077		1872
APC (26 January)	1946	2194		1831
Rotation length (days)	18	22		22
Stocking rate	2.7	2.6		2.3
Percentage in milk	100	100	100	100
Milksolids kg/cow	1.66	1.77		1.33
Milksolids kg/ha	4.5	4.6		3.1
MS/cow (season to date)	260	259		227
MS/ha (season to date)	743	690		520
N (kg/ha) year to date	112	146		50
Current N application rate kg N/ha	20	20		None
	16 Jan	17 Jan		
DM%	14.6	14.3		
Pasture ME	12.2	>12.7		
Pasture NDF	54.8	42.9		
Pasture CP	20.1	31.5		
Target Intake (kg DM/cow/d)	18	20		18
Supplement (kg/cow/day)	1.5	2.0		4.0
Soil temperature (°C)	14.5	16.8		
Growth Rate (kg DM/day)	49	58		26
Rainfall	82	24		126
Conditions for farmwalk	Fine but very wet under foot still	Fine cold wind		Heavy heavy rain wind thunder lightning flooding
Comments				

NB: pasture quality data are for 1 sample collected from each farm

Weekly Pasture Growth Rates

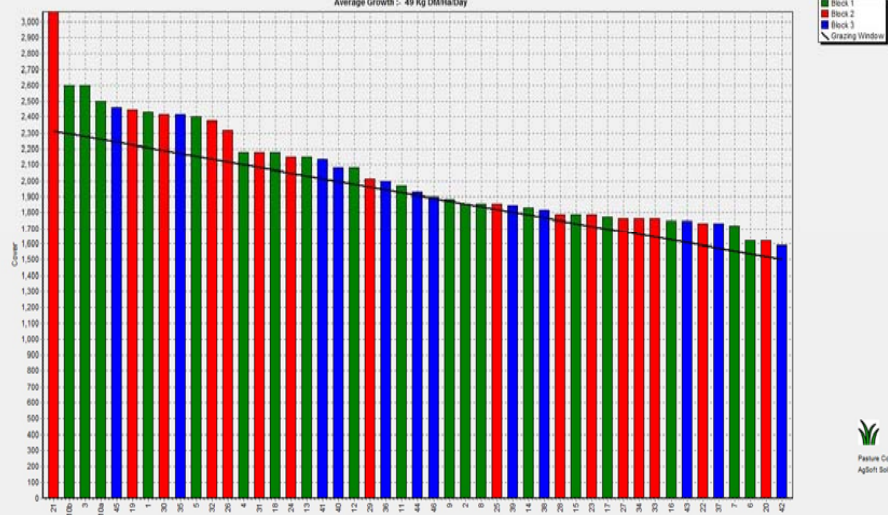


Weekly Soil Temperature



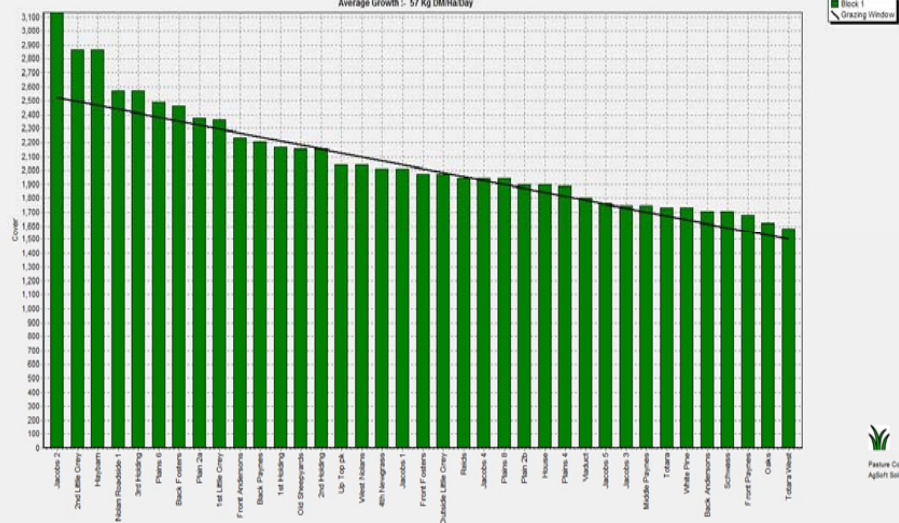
Westport

Farm Name: ADDIAN & CHERYL GALLAGHER
 Date Read : 30/01/2017
 Average Cover : 2027 Kg DM/ha
 Average Growth : 49 Kg DM/ha/Day



Ikamatua

Farm Name: ANDREW, MIO, MURFIN
 Date Read : 31/01/2017
 Average Cover : 2065 Kg DM/ha
 Average Growth : 57 Kg DM/ha/Day



Greymouth

Kowhitirangi

Farm Name: TANE & RACHEL LITTLE
 Date Read : 1/02/2017
 Average Cover : 1872 Kg DM/ha
 Average Growth : 26 Kg DM/ha/Day



