

Westland Monitor Farm Project

Weekly Update 20 April 2017

CO comment

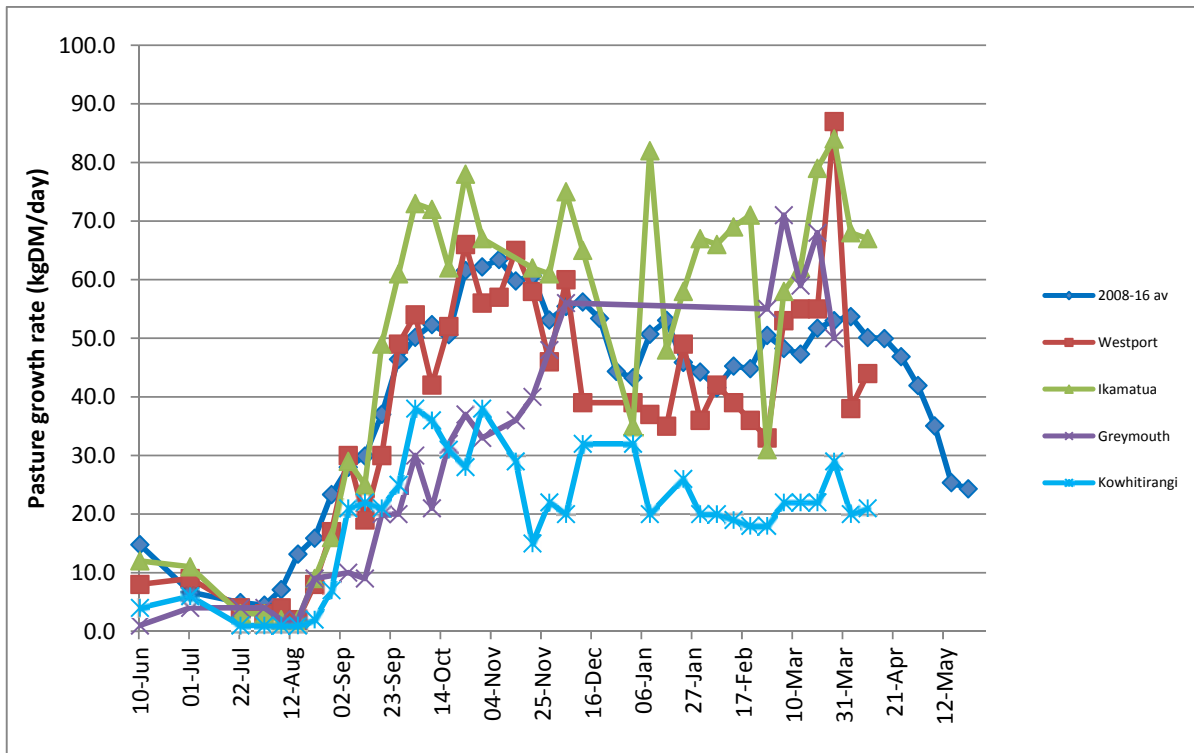
The progression into autumn has been marked by cooler growing conditions, increasing the need to focus firmly on the end of this lactation and getting some solid plans in place for the start of the next lactation. In many cases, the on-farm pasture position is looking good, but don't be deceived by the surge in average pasture cover. Pasture growth rates will be likely to decline through the rest of April and May. Capitalise on the current above average pasture growth rates and longer grazing rotations to push pasture forward for feeding in early winter. If wintering cows on the milking platform, the rotation length needs to be well in excess of 30 days now (and heading towards 40 days by the end of April) and all culls should be off the farm to reduce the stocking rate and daily feed demand. Continue to update your feed budget regularly as pasture covers change. All early calving cows (and more particularly second calvers) less than BCS 4 should have been dried off by now. These early calving cows have the less time to increase body condition prior to calving. Remember cows will not put on body condition in the last in the first 10 days after drying off and in the 4 weeks before calving. If you are interested in viewing the Expanded Weekly Summary of the monitoring results, follow this link [West Coast Monitor Farm Full Summary](#)

Farm Summary

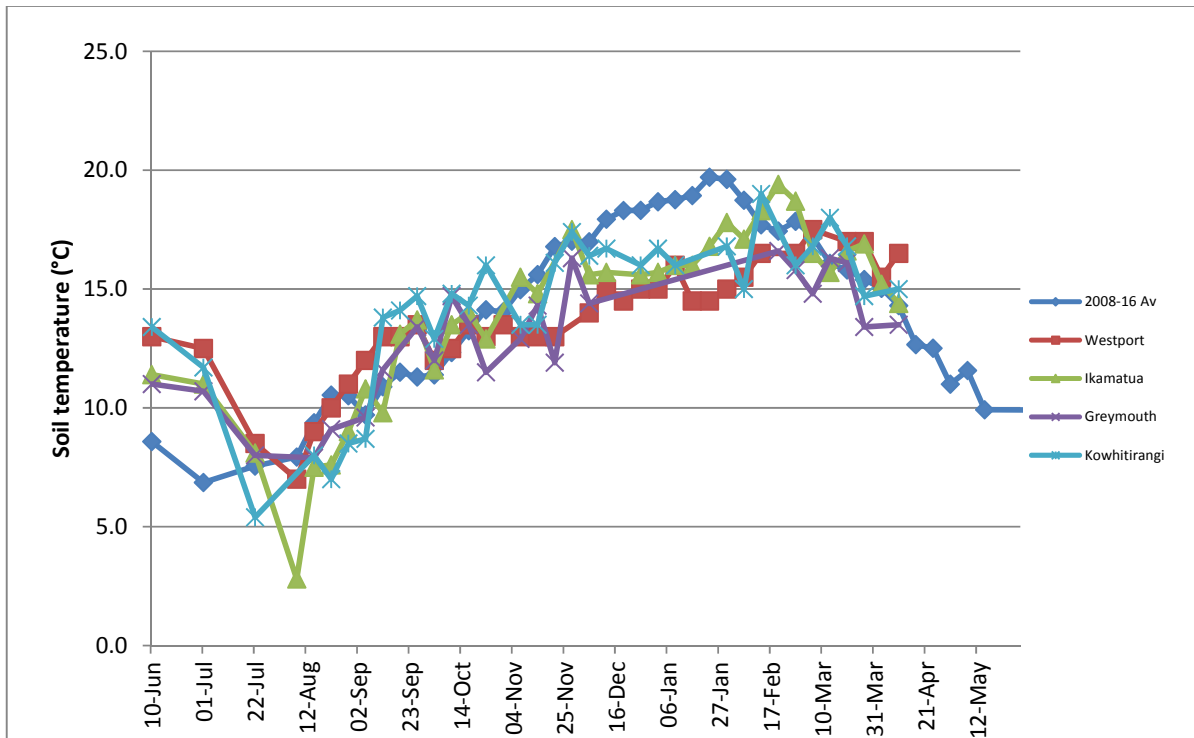
	Westport	Ikamatua	Greymouth	Kowhitirangi
Average cover (kg DM/ha)	2072	2148	2290	1964
APC (13 April)	2161	2219		1992
Rotation length (days)	23	25	23	43
Stocking rate	2.5	2.5	2.3	2.0
Percentage in milk	88	94	92	85
Milksolids kg/cow	1.43	1.52	1.20	1.13
Milksolids kg/ha	3.7	3.8	2.8	2.3
MS/cow (season to date)	396	383		317
MS/ha (season to date)	1161	1021		758
N (kg/ha) year to date	161	221	195	50
Current N application rate kg N/ha	15	25	25	None
	3 April	4 April		5 April
DM%	15.1	11.7		15.1
Pasture ME	12.1	>12.7		12.1
Pasture NDF	52.2	48.1		52.2
Pasture CP	27.6	33.9		27.6
Target Intake (kg DM/cow/d)	18	18	18	16
Supplement (kg/cow/day)	1.5	1.5	1.8	1.0
Soil temperature (°C)	16.5	14.4	13.5	15.0
Growth Rate (kg DM/day)	44	67		21
Rainfall	172	90	113	88
Conditions for farmwalk	Fine and warm	Fine and warm		Fine and warm. Tane doing drains, ditches etc
Comments				

NB: pasture quality data are for 1 sample collected from each farm

Weekly Pasture Growth Rates

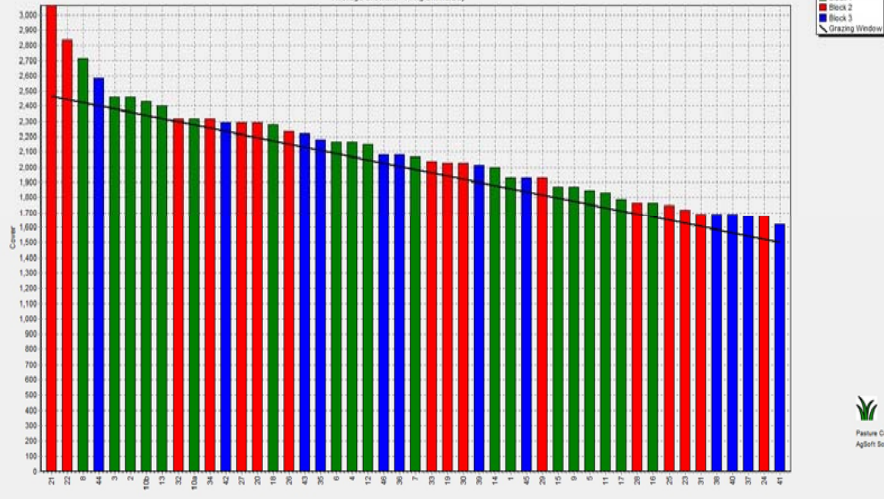


Weekly Soil Temperature



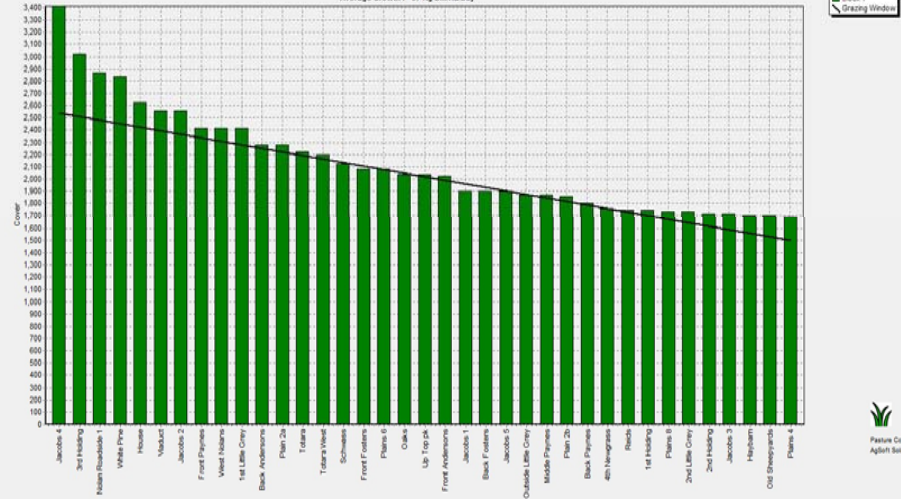
Westport

Farm Name: ADRIAN & CHERYL GALLAGHER
 Date Read : 17/04/2017
 Average Cover : 2072 Kg DM/Ha
 Average Growth : 44 Kg DM/Ha/Day



Ikamatua

Farm Name: ANDREW, ANJ, MARYN
 Date Read : 18/04/2017
 Average Cover : 2122 Kg DM/Ha
 Average Growth : 67 Kg DM/Ha/Day



Greymouth

Farm Name: ANDREW ROBB
 Date Read : 19/04/2017
 Average Cover : 2280 Kg DM/Ha
 Average Growth : 0 Kg DM/Ha/Day



Kowhitirangi

Farm Name: TANE & RACHEL LITTLE
 Date Read : 19/04/2017
 Average Cover : 1964 Kg DM/Ha
 Average Growth : 21 Kg DM/Ha/Day



