

Westland Monitor Farm Project

Weekly Update 20 January 2017

CO comment

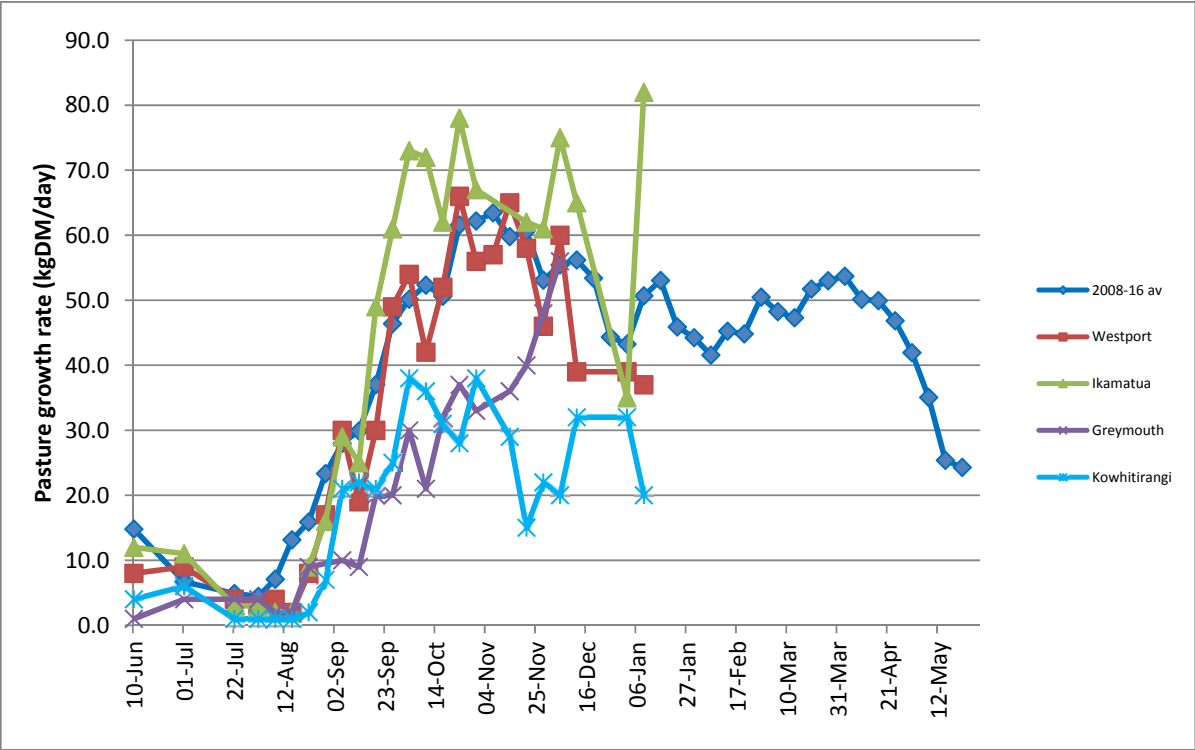
Early aged pregnancy diagnosis (EAPD) is a good tool to be using shortly to provide you with a lot of valuable information. Getting pregnancies aged means you will know exact conception dates. This will illustrate how your cows got in calf over time. Once you have the results, click on the MINDA Reproduction Pregnancy tab. Click on the blue line on your report to see how many cows were already in calf by a certain date and how many cows were still empty at that point. EAPD will provide you with more accurate expected calving dates. You can use the reports on MINDA Reproduction's Pre-Calving tab to develop a more accurate indication of feed demand through the calving period and estimate how many calves will be filling your sheds. With accurate expected calving dates, you can better identify the late calvers for potential culling, make dry-off decisions based on body condition score and expected calving date, and know when any cows wintered off farm need to be off the wintering blocks. EAPD produces in-calf and conception rate information through the mating period, which means you are better able to identify who the problem cows were, when the problem period was and help modify the mating plan to achieve the desired results. If you are interested in viewing the full summary of monitoring results, follow this link [West Coast Monitor Farm Full Summary](#)

Farm Summary

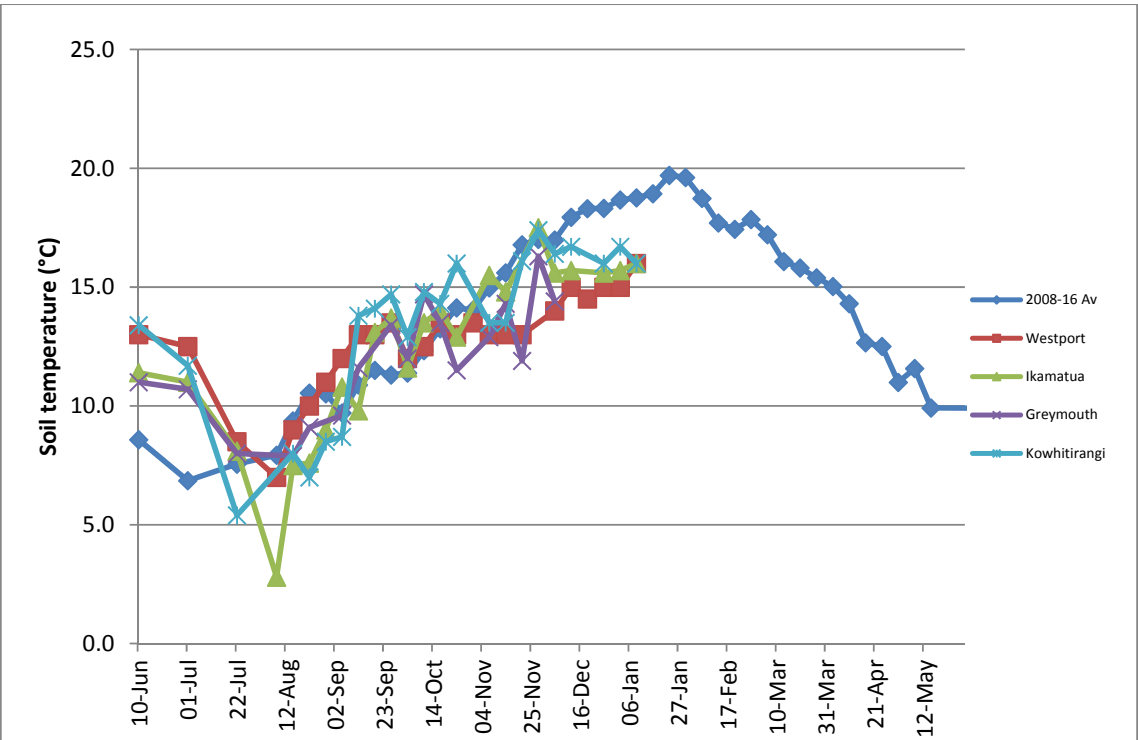
	Westport	Ikamatua	Greymouth	Kowhitirangi
Average cover (kg DM/ha)	1932	2248		1825
APC (12 Jan)	1930	2208		1794
Rotation length (days)	18	23		23
Stocking rate	2.8	2.6		2.3
Percentage in milk	100	100	100	100
Milksolids kg/cow	1.8	1.77		1.37
Milksolids kg/ha	4.9	4.6		3.1
MS/cow (season to date)	240	247	244	218
MS/ha (season to date)	687	657	541	520
N (kg/ha) year to date	106	133	133	50
Current N application rate kg N/ha	15	25		None
	5 Dec	6 Dec	30 Nov	7 Dec
DM%	17.7	16.8	15.3, 18.2	12.9
Pasture ME	>12.6	>12.7	>12.7, 12.2	12.6
Pasture NDF	43.8	43.7	43.2, 46.8	41.0
Pasture CP	29.4	23.6	29.4, 21.8	29.0
Target Intake (kg DM/cow/d)	18	20		18
Supplement (kg/cow/day)	1.5	2.0		1.5
Soil temperature (°C)	16.0	16.0		16.0
Growth Rate (kg DM/day)	37	82		20
Rainfall	129	50		200
Conditions for farmwalk	Fine but still water logged	Heavy rain		Flooded, going on OAD
Comments				

NB: pasture quality data are for 1 sample collected from each farm

Weekly Pasture Growth Rates

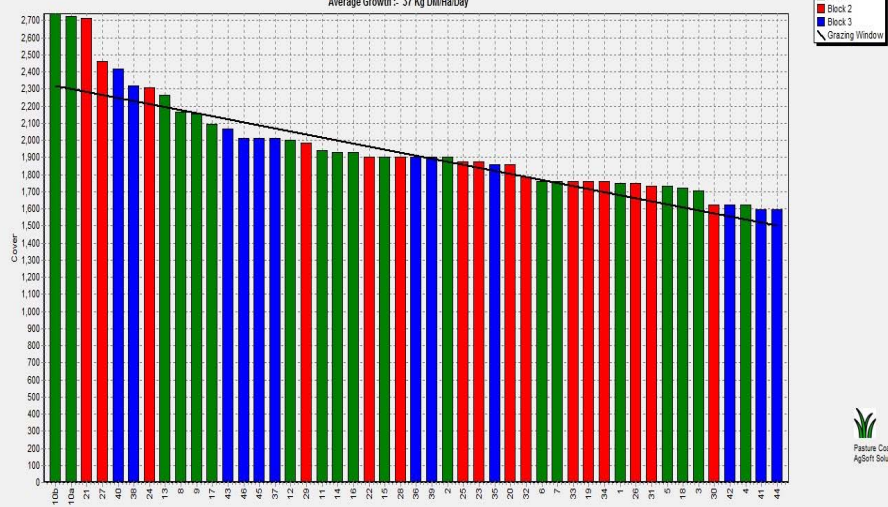


Weekly Soil Temperature



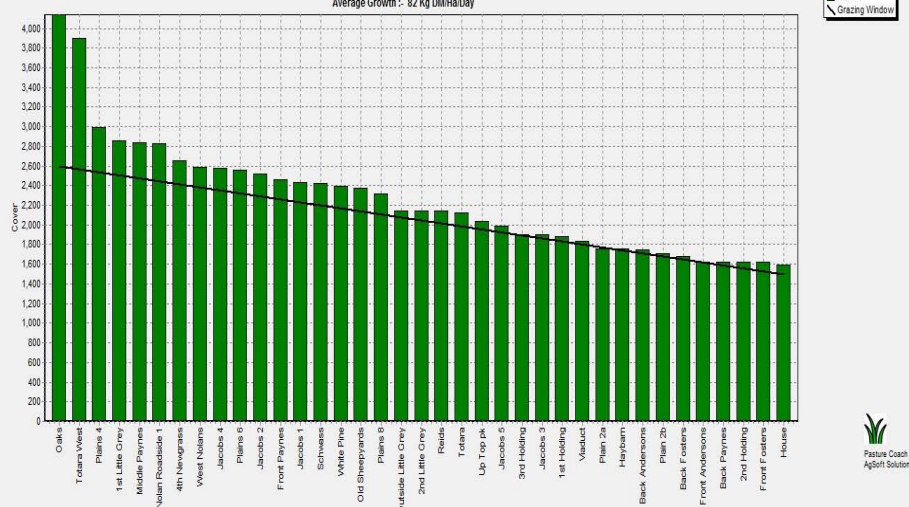
Westport

Farm Name: ADRIAN & CHERYL GALLAGHER
 Date Read: 16/01/2017
 Average Cover: 1932 Kg DM/ha
 Average Growth: 37 Kg DM/ha/Day



Ikamatua

Farm Name: ANDREW_NIKI_MIRFIN
 Date Read: 17/01/2017
 Average Cover: 2248 Kg DM/ha
 Average Growth: 82 Kg DM/ha/Day



Greymouth

Kowhitirangi

Farm Name: TAMI & RACHEL LITTLE
 Date Read: 16/01/2017
 Average Cover: 1835 Kg DM/ha
 Average Growth: 20 Kg DM/ha/Day

