

# Westland Monitor Farm Project

## Weekly Update 21 April 2016

### CO comment

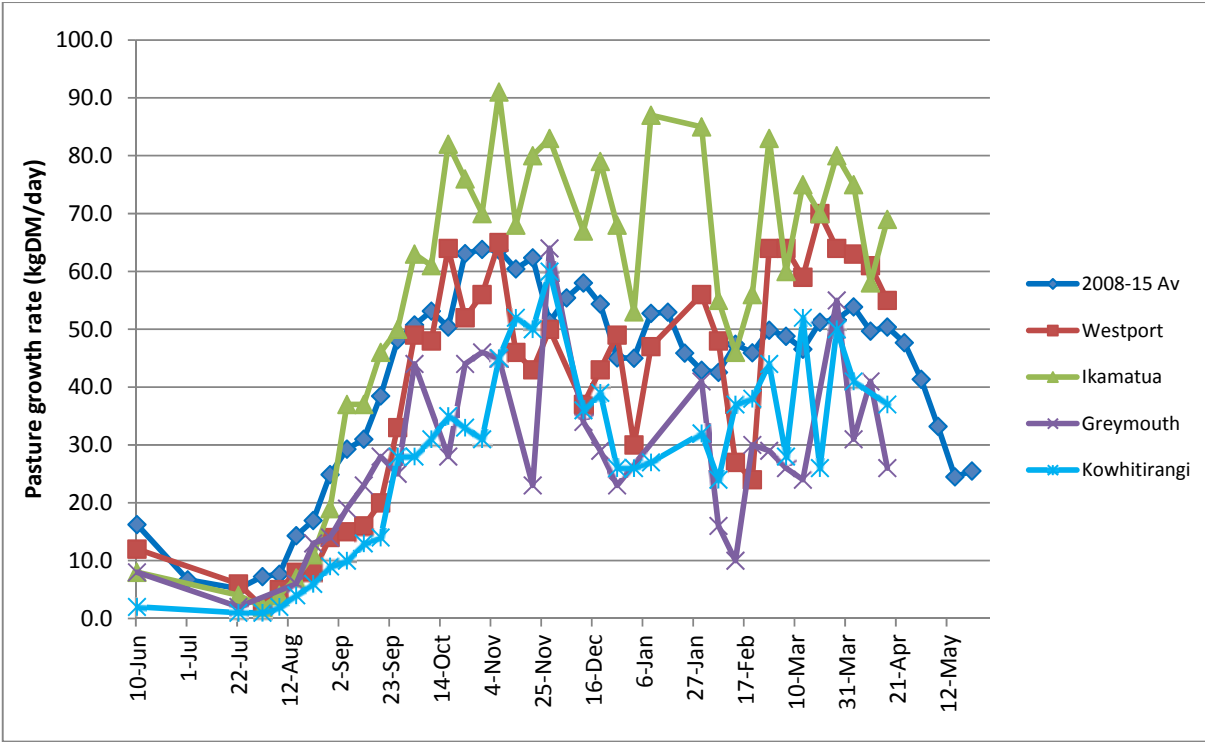
The end of the season isn't that far away now and a lot of the focus has been going on the milking cows and what's important for them at this stage of the season, but what about the replacement heifers? How are they tracking? Regular weighing of the replacement heifers goes a long way to ensuring that they hit their targets. But weighing by itself doesn't make them any heavier. You need to be using an interpretive tool such as MINDA weights to provide feedback against what the animals could potentially weigh. Once you've determined the weights of the animals in the mob, you need to identify any that are below target and put in place a strategy to make sure they are able to meet the target mating weights. Use all the information you can to formulate your strategy – your recent Fertility Reports are a good place to start to identify any problem areas that need to be improved. The pay-off is clear – well grown heifers that hit target weights will be more likely to get in-calf in the first 6 weeks of mating, have a longer lactation, re-conceive as 3 year olds and as a result be more profitable over their lifetime.

### Farm Summary

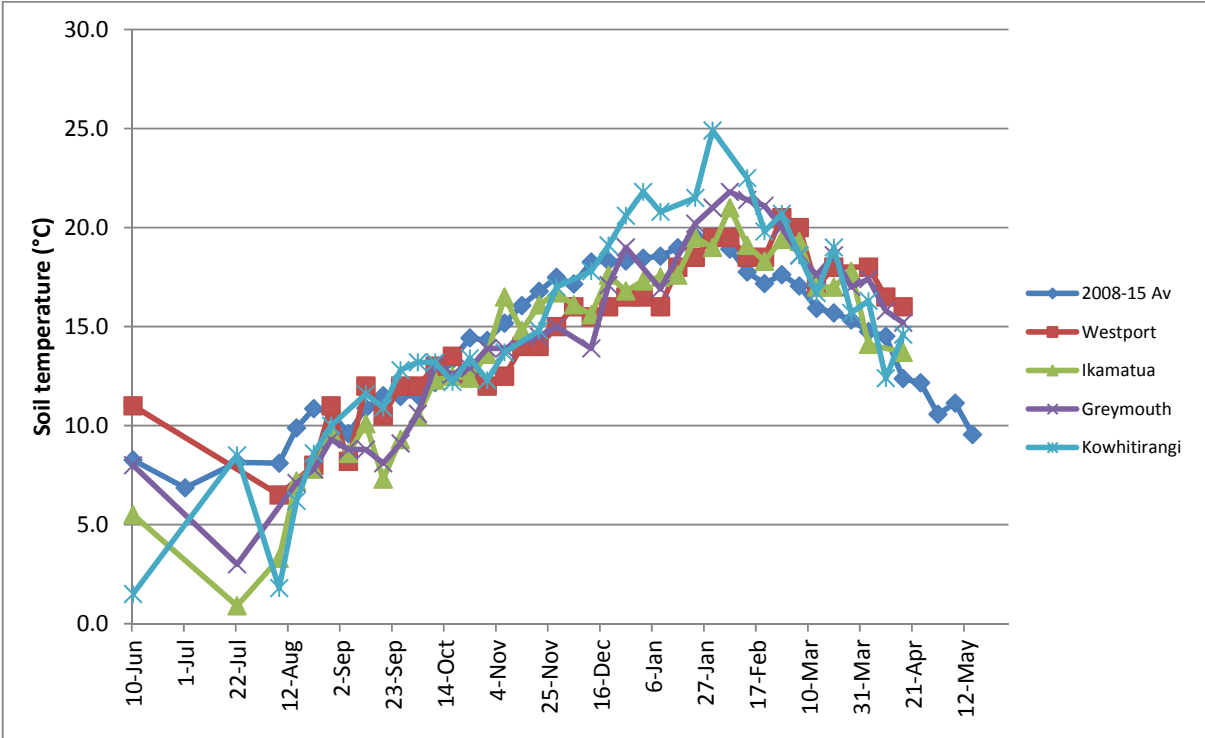
|                                    | Westport       | Ikamatua            | Greymouth | Kowhitirangi  |
|------------------------------------|----------------|---------------------|-----------|---------------|
| Average cover (kg DM/ha)           | 2287           | 2309                | 2150      |               |
| APC (14 April)                     | 2276           | 2420                | 2217      | 2104          |
| Rotation length (days)             | 25             | 25                  | 23        |               |
| Stocking rate                      |                |                     |           |               |
| Percentage in milk                 | 82             | 96                  | 79        |               |
| Milksolids kg/cow                  | 1.41           | 1.23                | 1.27      |               |
| Milksolids kg/ha                   | 3.4            | 3.1                 | 2.5       |               |
| MS/cow (season to date)            | 401            | 359                 | 377       |               |
| MS/ha (season to date)             | 1087           | 901                 | 924       |               |
|                                    |                |                     |           |               |
| N (kg/ha) year to date             | 208            | 310                 | 317       |               |
| Current N application rate kg N/ha | 15             | 30                  | 20        |               |
|                                    |                |                     |           |               |
|                                    | 15/4           | 15/4                | 15/4      | 15/4          |
| DM%                                | 12.0           | 11.1                |           | 11.7          |
| Pasture ME                         | 12.2           | >12.7               |           | 12.7          |
| Pasture NDF                        | 45             | 21.8                |           | 45.7          |
| Pasture CP                         | 29.5           | 31.7                |           | 26.4          |
|                                    |                |                     |           |               |
| Target Intake (kg DM/cow/d)        | 18             | 18                  | 18        |               |
| Supplement (kg/cow/day)            | 1.6            | 1.7                 | 3.0       |               |
|                                    |                |                     |           |               |
| Soil temperature (°C)              | 16.0           | 13.7                | 15.2      |               |
| Growth Rate (kg DM/day)            | 55.0           | 69.0                | 26.0      |               |
| Rainfall                           | 19.0           | 5.0                 | 21.0      |               |
| Conditions for farmwalk            | Mild sunny day | Cold start warm day |           | Nice warm day |
| Comments                           |                |                     |           |               |

NB: pasture quality data are for 1 sample collected from each farm

Weekly Pasture Growth Rates

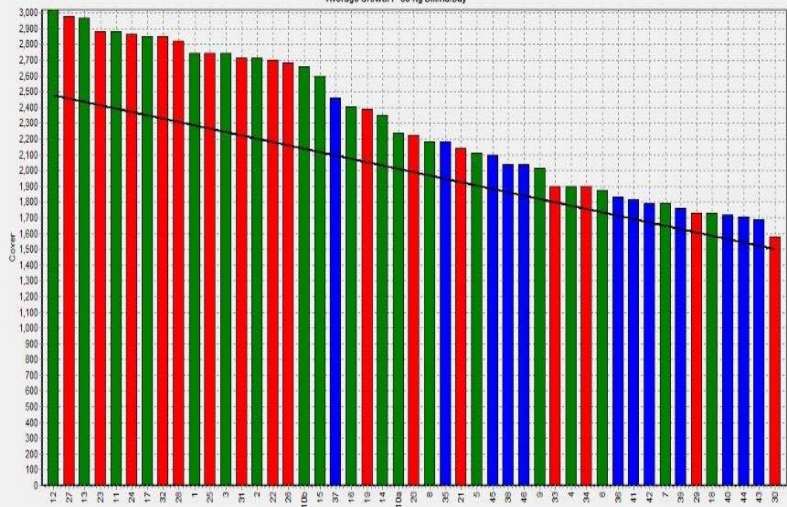


Weekly Soil Temperature



### Westport

Farm Name: ADRIAN & CHERYL GALLAGHER  
 Date Read: 4/18/2016  
 Average Cover: 2287 Kg DM/ha  
 Average Growth: 55 Kg DM/ha/Day

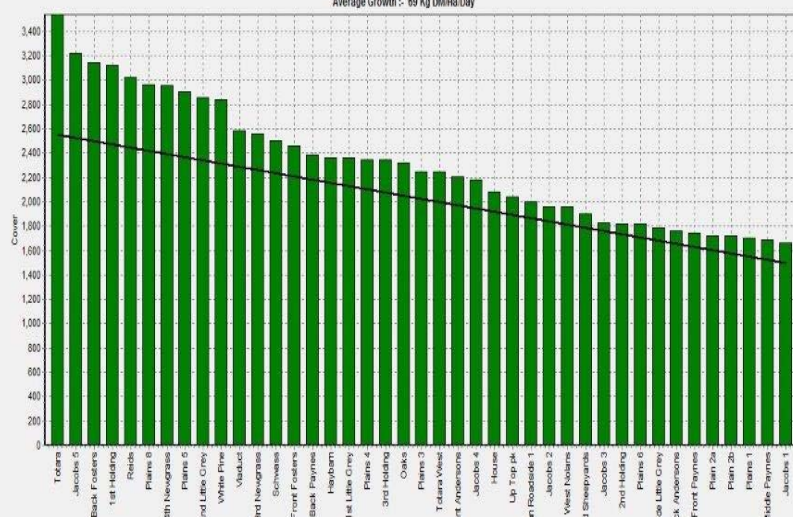


Block 1  
 Block 2  
 Block 3  
 Grazing Window



### Ikamatua

Farm Name: ANDREW & NIKI MIREN  
 Date Read: 4/19/2016  
 Average Cover: 2309 Kg DM/ha  
 Average Growth: 69 Kg DM/ha/Day



Block 1  
 Grazing Window



### Greymouth

Farm Name: ANDREW ROBB  
 Date Read: 4/20/2016  
 Average Cover: 2450 Kg DM/ha  
 Average Growth: 26 Kg DM/ha/Day

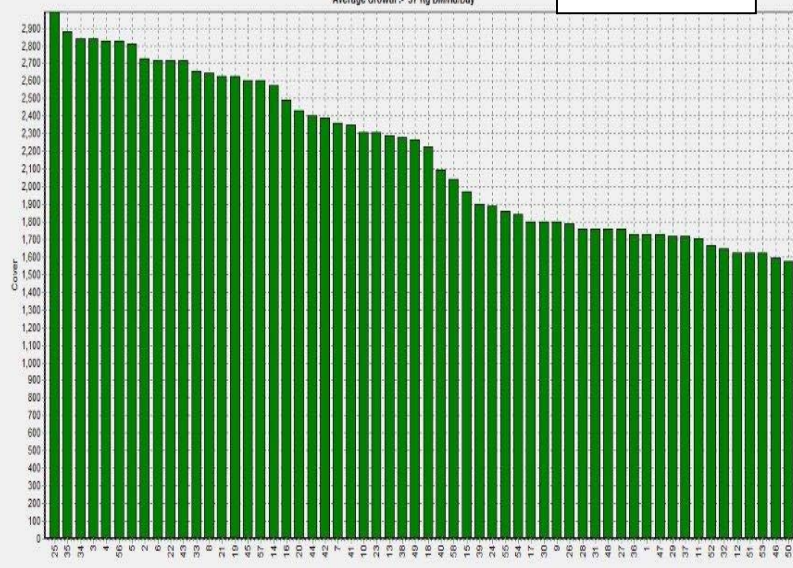


Block 1  
 Grazing Window



### Kowhitirangi

Farm Name: TANE & RACHEL LITTLE  
 Date Read: 4/20/2016  
 Average Cover: 2176 Kg DM/ha  
 Average Growth: 37 Kg DM/ha/Day



Block 1  
 Grazing Window









