

Westland Monitor Farm Project

Weekly Update 22 September 2016

CO comment

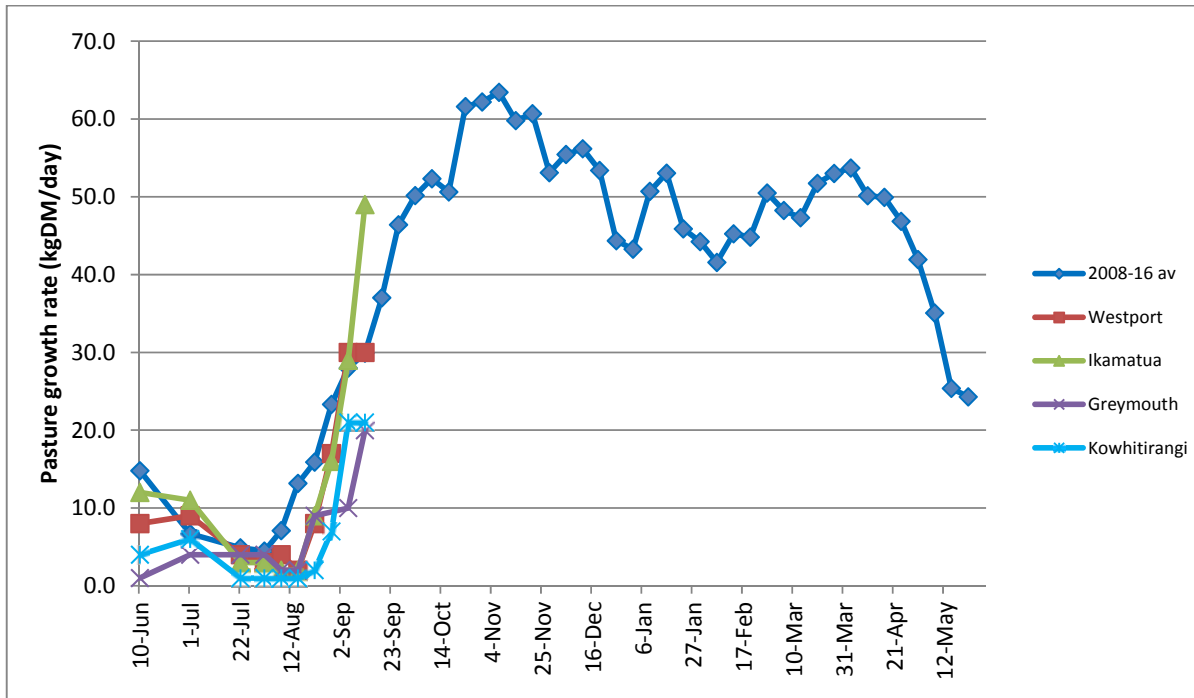
Mating is around the corner, so it is time to develop and implement an efficient heat detection policy for your farm. Farmers who achieve good heat detection results use a combination of good observation and effective use of heat detection aids. Use the time between calving and mating to take junior staff to the paddocks after milking and work in the shed to teach them what to look for in a cow on heat. Tail painting cows 35 days before mating and identifying those cows that haven't cycled before mating starts are both strategies to minimise problems. For more details go to www.dairynz.co.nz/incalf and access the tools and resources available on the website. There are trained InCalf advisers available on the West Coast – contact them if you have reproduction issues that you want to solve.

Farm Summary

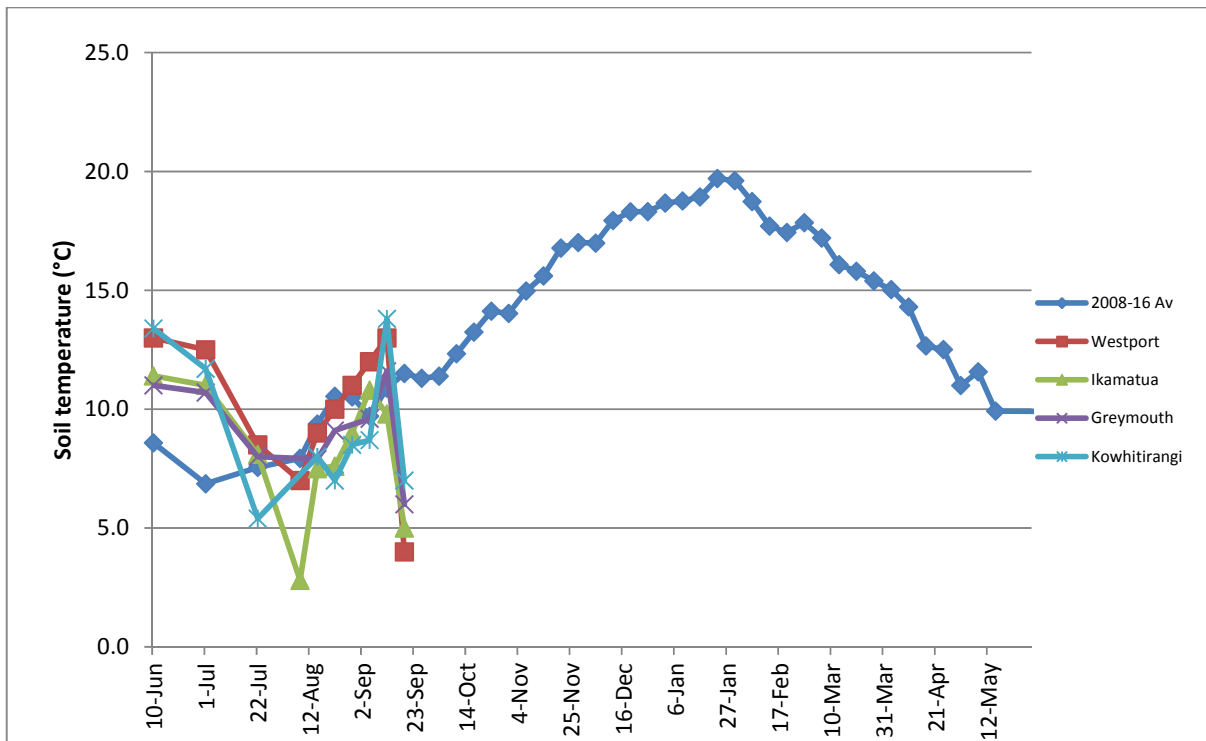
	Westport	Ikamatua	Greymouth	Kowhitirangi
Average cover (kg DM/ha)	1859	2080	1826	1855
APC	1890	1998	1832	1818
Rotation length (days)	20	30	23	30
Stocking rate	2.7	2.1	2.2	2.1
Percentage in milk	88	86	87	94
Milksolids kg/cow	2.06	2.07	2.01	1.60
Milksolids kg/ha	5.0	6.5	4.1	3.3
MS/cow (season to date)	42	29	44	37
MS/ha (season to date)	117	133	98	77
N (kg/ha) year to date	24	24	62	0
Current N application rate kg N/ha	15	30	25	None
	8 Aug	9 Aug		10 Aug
DM%	19.1	17.8		21.1
Pasture ME	12.1	12.7		12.7
Pasture NDF	46.2	35.7		37.3
Pasture CP	23.3	18.3		17.6
Target Intake (kg DM/cow/d)	13.0	9.8	11.6	13.8
Supplement (kg/cow/day)	18	18	20	16
Soil temperature (°C)	13.0	9.8	11.6	13.8
Growth Rate (kg DM/day)	30	49	20	21
Rainfall	79	30	31	-
Conditions for farmwalk	Beautiful fine warm day	Fine warm day		Fine and warm
Comments				

NB: pasture quality data are for 1 sample collected from each farm

Weekly Pasture Growth Rates

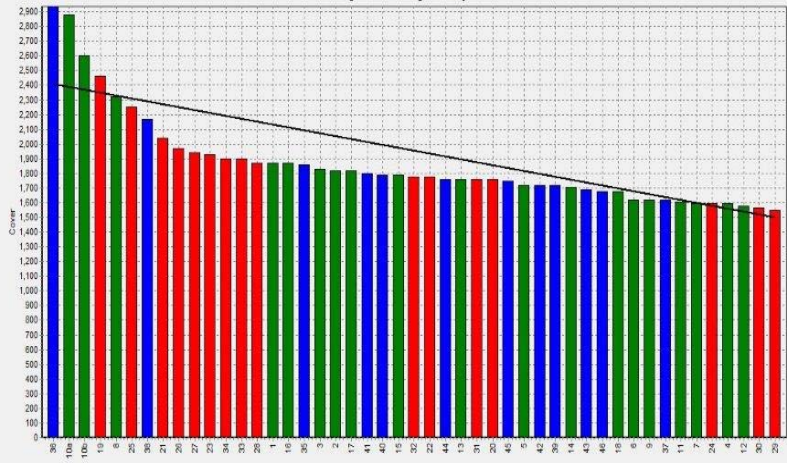


Weekly Soil Temperature



Westport

Farm Name: ADRIAN & CHERYL GALLAGHER
 Date Read: 9/18/2016
 Average Cover: 1859 Kg DM/ha
 Average Growth: 30 Kg DM/ha/Day



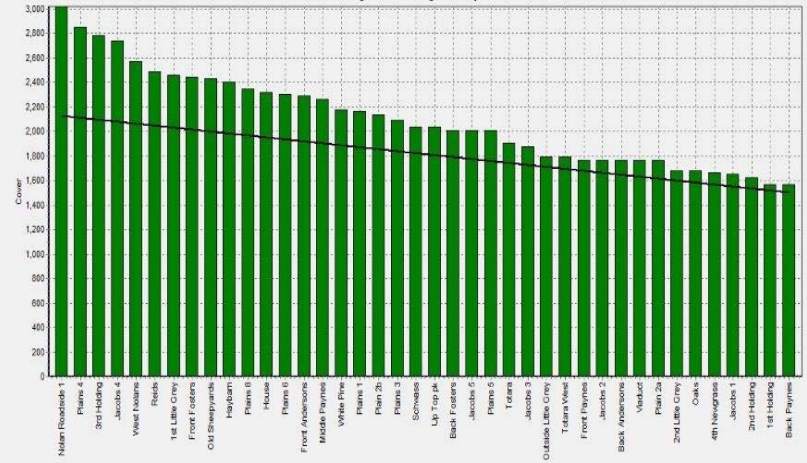
Block 1
 Block 2
 Grazing Window



1500 Residual 2407 Pre-grazing Save Print Sort Order Tools Rotation Calc Zoom In Zoom Out Zoom 100%

Ikamatua

Farm Name: ANDREW & NIKI MIRFIN
 Date Read: 9/20/2016
 Average Cover: 2080 Kg DM/ha
 Average Growth: 49 Kg DM/ha/Day



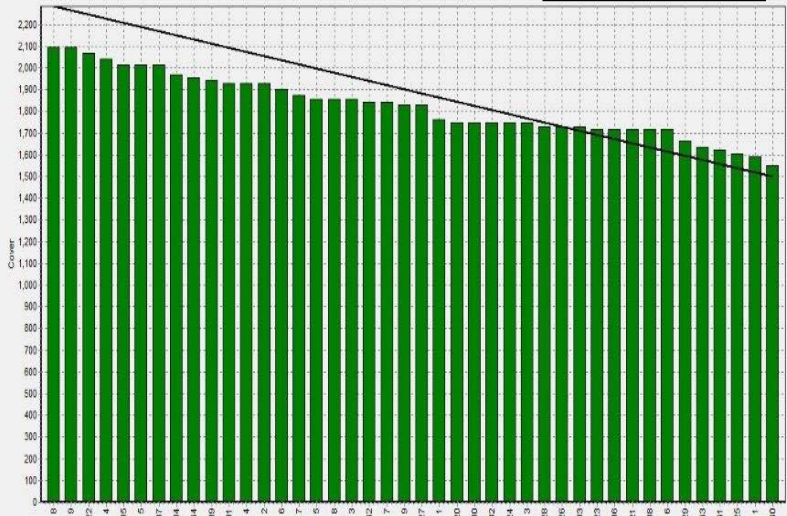
Block 1
 Grazing Window



1500 Residual 2125 Pre-grazing Save Print Sort Order Tools Rotation Calc Zoom In Zoom Out Zoom 100%

Greymouth

Farm Name: ANDREW ROBB
 Date Read: 9/21/2016
 Average Cover: 1826 Kg DM/ha
 Average Growth: 20 Kg DM/ha/Day



Block 1
 Grazing Window



1500 Residual 2284 Pre-grazing Save Print Sort Order Tools Rotation Calc Zoom In Zoom Out Zoom 100%

Kowhitirangi

Farm Name: TANE & RACHEL LITTLE
 Date Read: 9/21/2016
 Average Cover: 1855 Kg DM/ha
 Average Growth: 21 Kg DM/ha/Day



Block 1
 Grazing Window



1500 Residual 2386 Pre-grazing Save Print Sort Order Tools Rotation Calc Zoom In Zoom Out Zoom 100%

