

Westland Monitor Farm Project

Weekly Update 23 December 2016

CO comment

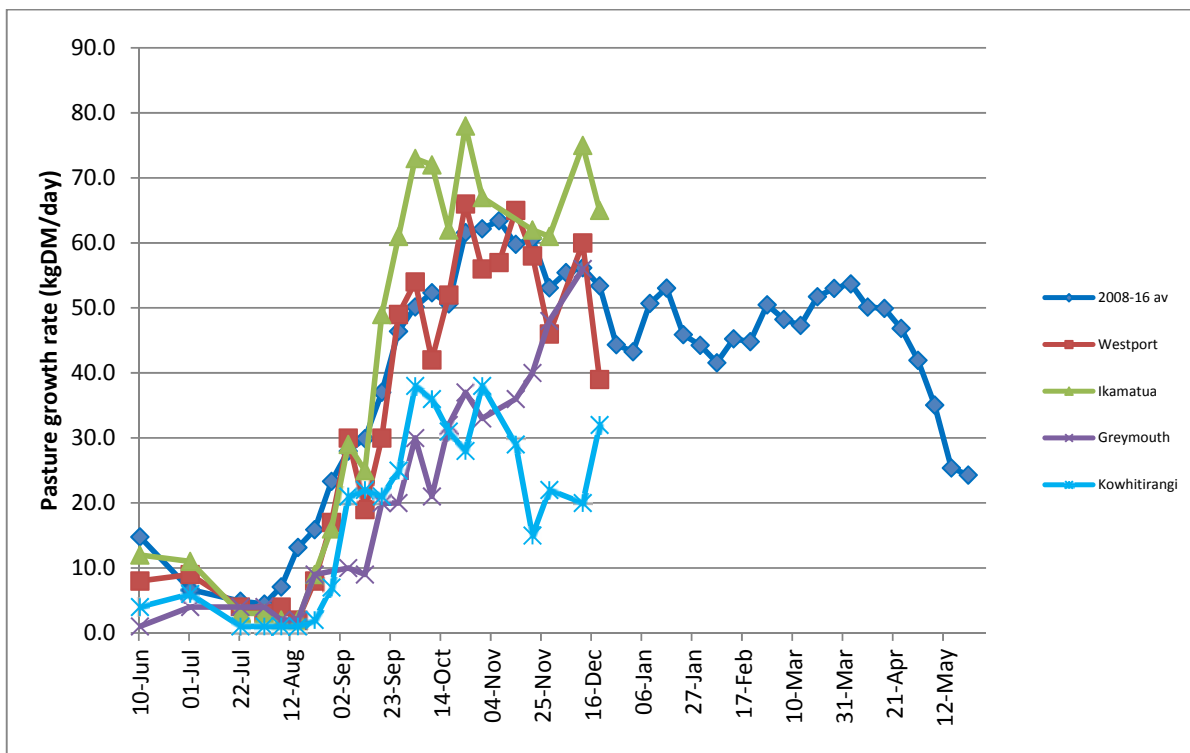
Before the festive season hits top gear, and you or your staff head off on a summer break, it is a good time to check on young stock at grazing. They will need to be meeting their liveweight targets to ensure that they are given the best chance possible to express their potential as future herd members. Ensure all staff are familiar with the Christmas/New Year roster and know when they are expected back at work and what they will be responsible for during this period. With many farm servicing businesses closing for two weeks, think about supplies that you may need to have on hand. Not having spare cluster bowls on Christmas day is no fun for anyone. Ensure that you have a good couple of days relaxing and enjoying the festive season, even if you are the one who drew the short straw to milk. We would like to wish you all a Merry Christmas and festive season.

Farm Summary

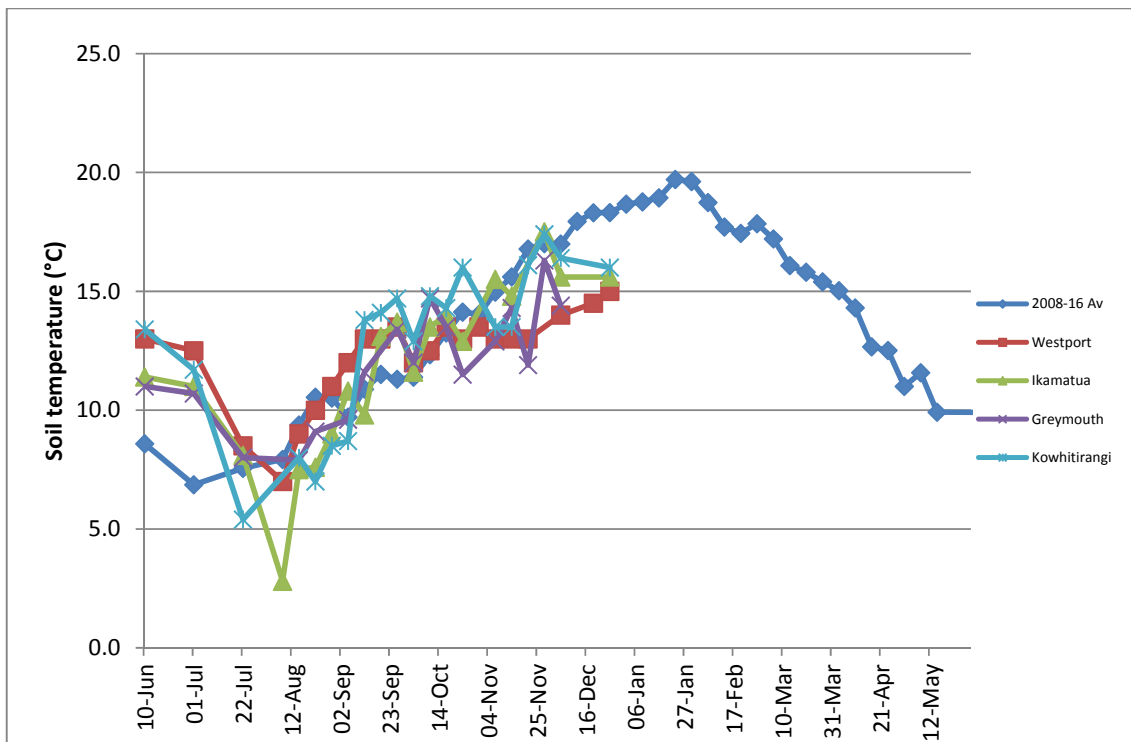
	Westport	Ikamatua	Greymouth	Kowhitirangi
Average cover (kg DM/ha)	2002	2111		1862
APC (15 December)	2034	2135	1967	1807
Rotation length (days)	18	22		23
Stocking rate	2.8	2.6		2.3
Percentage in milk	96	99		97
Milksolids kg/cow	1.76	1.86		1.50
Milksolids kg/ha	4.8	4.9		3.5
MS/cow (season to date)	197	195	244	180
MS/ha (season to date)	561	520	541	429
N (kg/ha) year to date	92	110	133	50
Current N application rate kg N/ha	20	25	20	-
	5 Dec	6 Dec	30 Nov	7 Dec
DM%	17.7	16.8	15.3, 18.2	12.9
Pasture ME	>12.6	>12.7	>12.7, 12.2	12.6
Pasture NDF	43.8	43.7	43.2, 46.8	41.0
Pasture CP	29.4	23.6	29.4, 21.8	29.0
Target Intake (kg DM/cow/d)	18	20		18
Supplement (kg/cow/day)	1.0	2.5		2.5
Soil temperature (°C)	15.0	15.7		16.7
Growth Rate (kg DM/day)	39	65		32
Rainfall	92	60		100
Conditions for farmwalk	Bottom part of farm under water	Fine!		Nice warm day but farm still very wet and struggling to dry out
Comments				

NB: pasture quality data are for 1 sample collected from each farm

Weekly Pasture Growth Rates

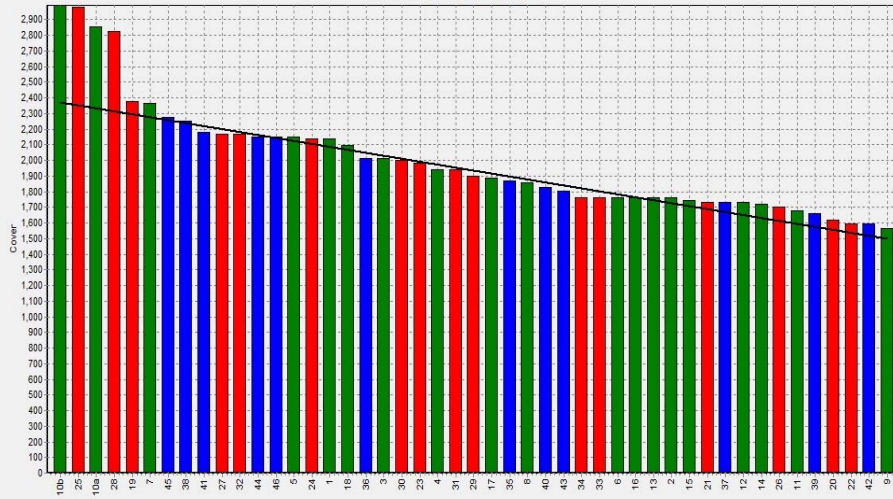


Weekly Soil Temperature



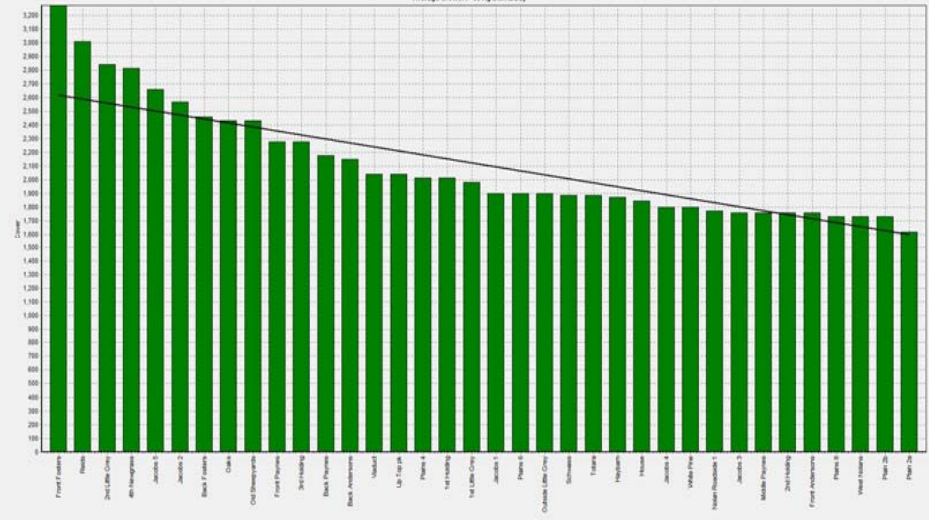
Westport

Farm Name:- ADRIAN & CHERYL GALLAGHER
 Date Read:- 12/19/2016
 Average Cover:- 2002 Kg DM/Ha
 Average Growth:- 39 Kg DM/Ha/Day



Ikamatua

Farm Name:- ANDREW WILKINSON
 Date Read:- 20/12/2016
 Average Cover:- 2111 Kg DM/Ha
 Average Growth:- 65 Kg DM/Ha/Day



Greymouth

Farm Name:- ANDREW ROBB
 Date Read:- 12/14/2016
 Average Cover:- 1967 Kg DM/Ha
 Average Growth:- 56 Kg DM/Ha/Day



█ Stock 1
 ▽ Grazing Window



Kowhitirangi

Farm Name:- TANE & RACHEL LITTLE
 Date Read:- 12/21/2016
 Average Cover:- 1862 Kg DM/Ha
 Average Growth:- 32 Kg DM/Ha/Day

