

Westland Monitor Farm Project

Weekly Update 25 May 2017

CO comment

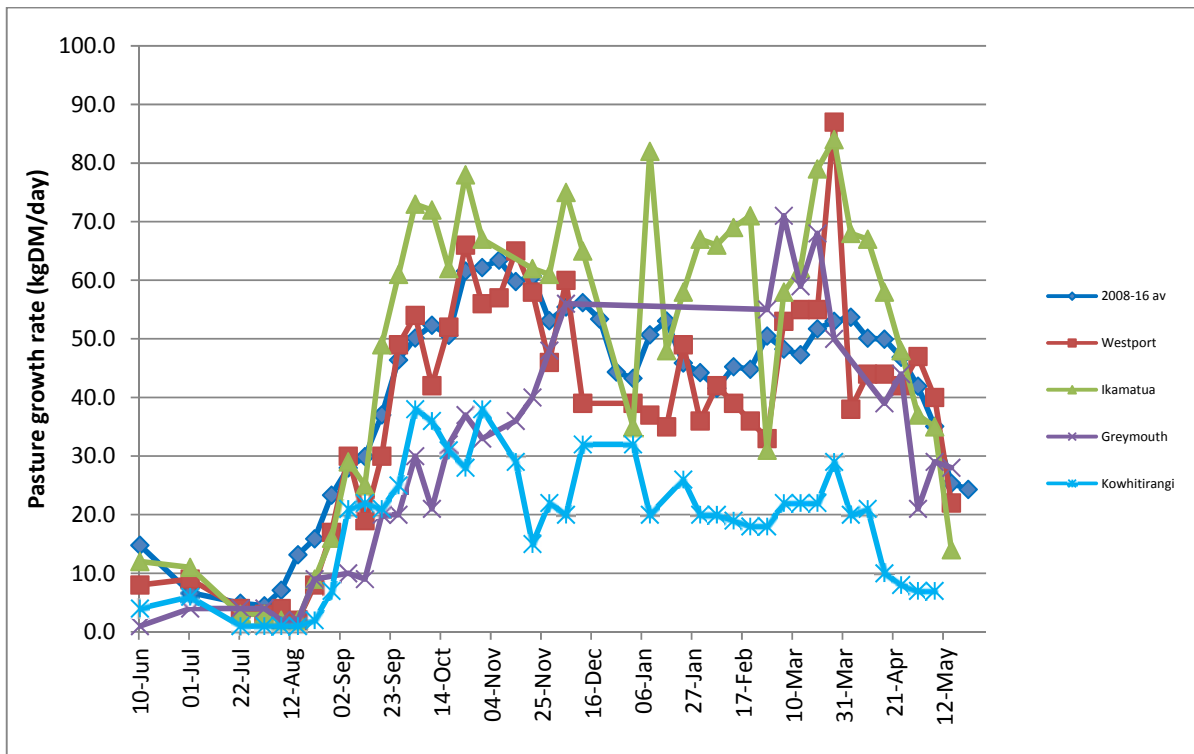
Continued cooling in ground temperatures is bringing pasture growth rates back closer to long term averages. The availability of winter supplement for purchase is steadily diminishing, if it hasn't already gone, so the opportunity to rely on bought in feed to plug any feed gaps won't remain for too much longer. Carefully consider the urge to capture those last few kilograms of milksolids at the current payout. Be careful, do your homework and make sure you have the feed on hand to carry it out. Current production levels are unlikely to meet the cost of the extra feed and if you end up trying to stretch the feed you have available, then it will be at the expense of cow body condition heading towards calving. The focus does need to go on making sure the farm is set up adequately for next season – check your feed budget to make sure you stay on track, whatever decision you end up making. If you are interested in viewing the Expanded Weekly Summary of the monitoring results, follow this link [West Coast Monitor Farm Full Summary](#)

Farm Summary

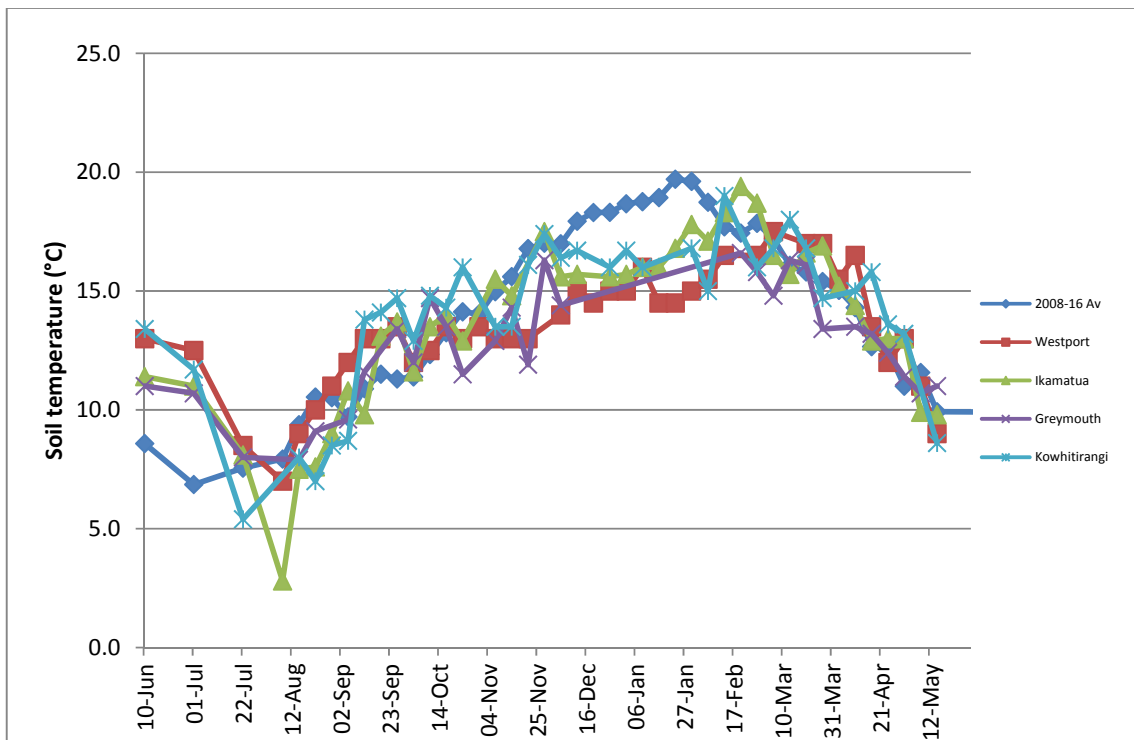
	Westport	Ikamatua	Greymouth	Kowhitirangi
Average cover (kg DM/ha)	2076	1925	1982	1798
APC (18 May 2017)	2134	1960	1988	1751
Rotation length (days)	36	30	22	
Stocking rate				
Percentage in milk	74	76	83	
Milksolids kg/cow	1.24	1.4	1.05	
Milksolids kg/ha	2.8	2.8	2.3	
MS/cow (season to date)	383	409	305	
MS/ha (season to date)	1120	1089	768	
N (kg/ha) year to date	181	231	132	
Current N application rate kg N/ha	20	None	None	
	1 May	2 May	3 May	3 May
DM%	17.2	12.3		13.9
Pasture ME	12.5	>12.7		>12.7
Pasture NDF	47.8	39.1		45
Pasture CP	28.5	31.4		26.5
Target Intake (kg DM/cow/d)	16	18	17	
Supplement (kg/cow/day)	2.3	4	7	
Soil temperature (°C)	9.0	9.8	11.0	8.6
Growth Rate (kg DM/day)	22	14	28	8
Rainfall	92	78	8.0	
Conditions for farmwalk	Fine overcastvery cold wind	Fine cold		Beautiful day
Comments				

NB: pasture quality data are for 1 sample collected from each farm

Weekly Pasture Growth Rates

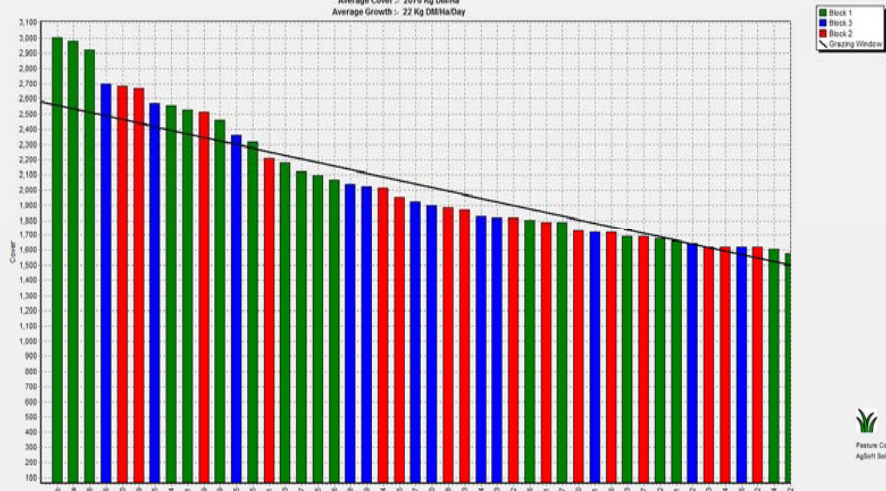


Weekly Soil Temperature



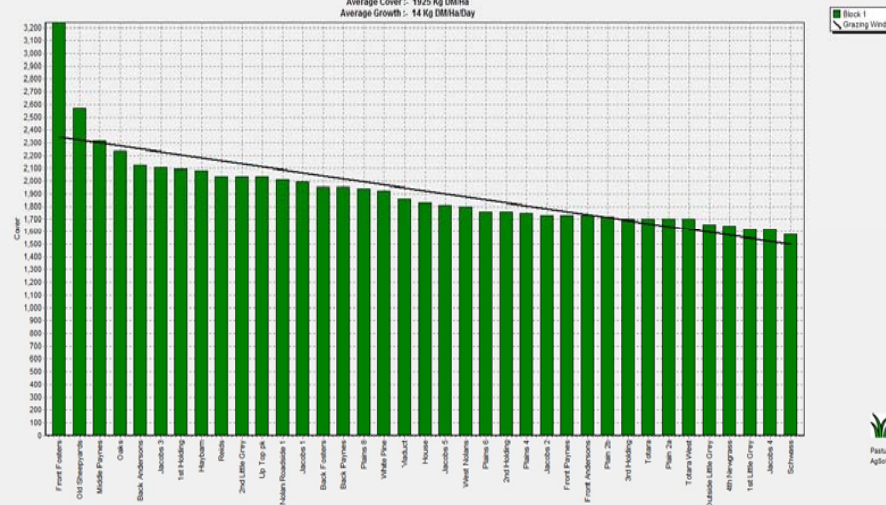
Westport

Farm Name: ADRIAN & CHERYL GALLAGHER
 Date Read : 22/05/2017
 Average Cover : 2076 Kg DM/ha
 Average Growth : 22 Kg DM/ha/Day



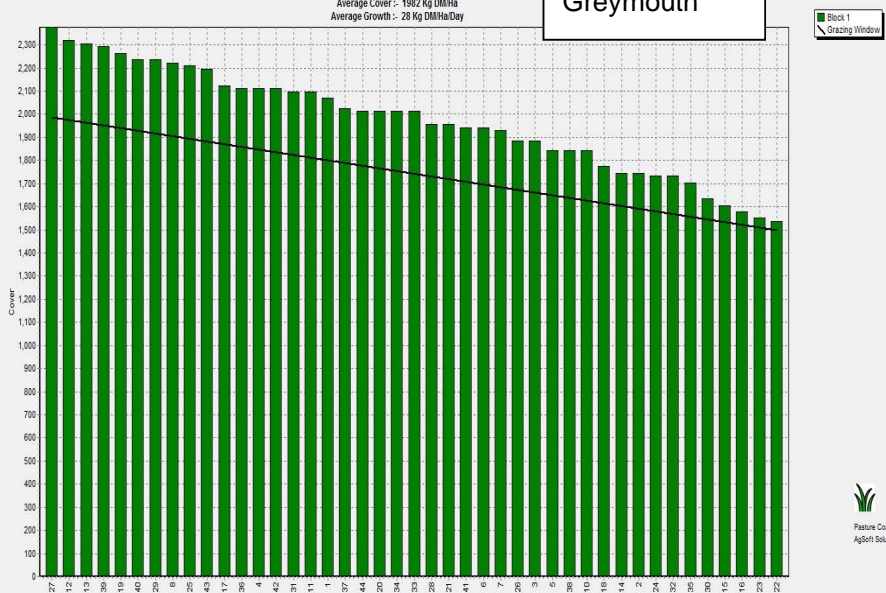
Ikamatua

Farm Name: ANDREW, NIKI, MIRINI
 Date Read : 23/05/2017
 Average Cover : 1925 Kg DM/ha
 Average Growth : 14 Kg DM/ha/Day



Greymouth

Farm Name: ANDREW ROBB
 Date Read : 24/05/2017
 Average Cover : 1982 Kg DM/ha
 Average Growth : 28 Kg DM/ha/Day



Kowhitirangi

Farm Name: TANE & RACHEL LITTLE
 Date Read : 24/05/2017
 Average Cover : 1798 Kg DM/ha
 Average Growth : 8 Kg DM/ha/Day

