

Westland Monitor Farm Project

Weekly Update 25 November 2016

CO comment

Even though the prospects of an improved payout for this seasons production have improved, on-going financial vigilance will continue to be required to ensure that optimum profitability levels are generated. Considerable uncertainty remains over the final financial results for this season, and keeping a close eye on the finances will be important. When any new information becomes available, use it to review and update the cash forecast for the season to enable you to gain a good appreciation of what that might mean to the expected financial result at the end of the year and what opportunities there are to reduce expenditure during the rest of the season. Wherever possible maintain expenditure on items that are going to maintain or improve production, but be mindful of the financial benefits of any costs that are incurred. You don't want to be spending a dollar if it is not going to generate at least a dollar at some stage during the season. Overdraft levels are likely to still be at their peak now so make sure you've discussed this with your bank manager and have appropriate financial arrangements in place – they need to be aware of what your expenditure plan is. The DairyNZ website has some good financial planning tools. Have a look at <http://www.dairynz.co.nz/farm/financial/budgets/> - there is likely to be a template available that will be helpful.

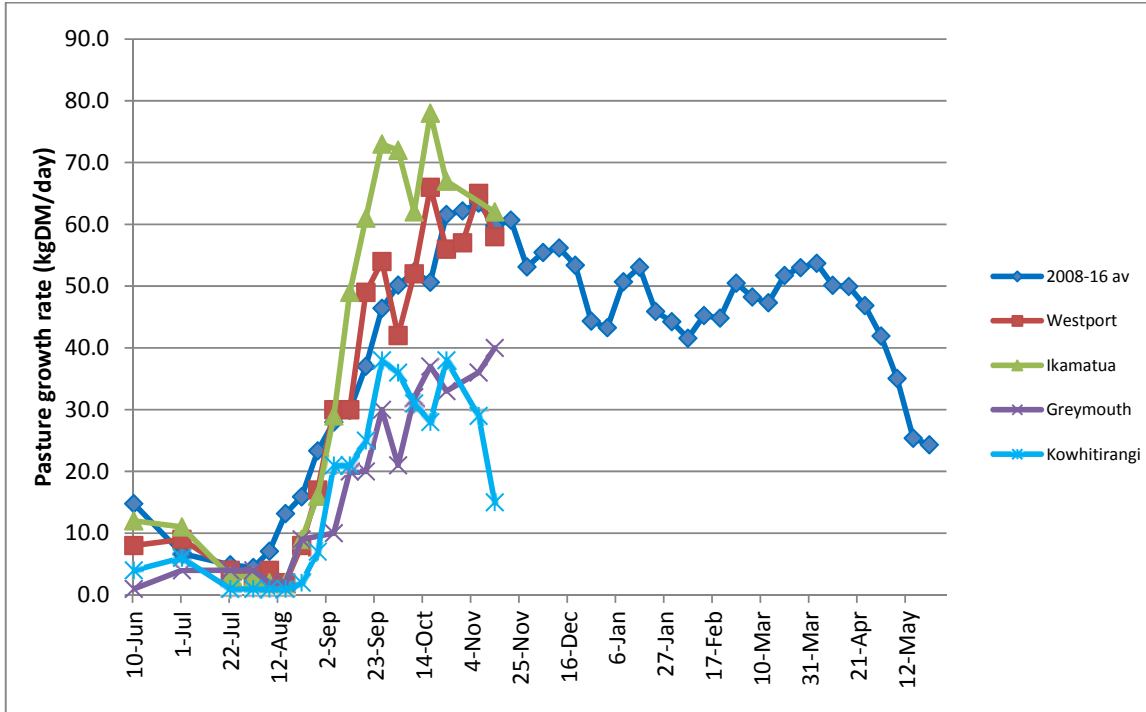
Farm Summary

	Westport	Ikamatua	Greymouth	Kowhitirangi
Average cover (kg DM/ha)	2162	2148	1933	1792
APC (17 November)	2157		1947	1883
Rotation length (days)	20	22	20	23
Stocking rate	2.8	2.6	2.5	2.3
Percentage in milk	100	100	100	100
Milksolids kg/cow	*	2.07	1.95	1.69
Milksolids kg/ha	*	5.3	5.0	3.9
MS/cow (season to date)	154	134	185	113
MS/ha (season to date)	439	377	411	269
N (kg/ha) year to date	68	87	108	50
Current N application rate kg N/ha	15	30	20	None
	7 Nov	7 Nov	7 Nov	7 Nov
DM%	14.7	13.8		14.4
Pasture ME	>12.7	>12.7		12.3
Pasture NDF	42.5	45		47.5
Pasture CP	21.8	26.4		23.3
Target Intake (kg DM/cow/d)	18	20	21	18
Supplement (kg/cow/day)	1.5	2.0	5.0	2.0
Soil temperature (°C)	13	14.8	14.3	13.5
Growth Rate (kg DM/day)	58	62	40	15
Rainfall	34	30	75	16

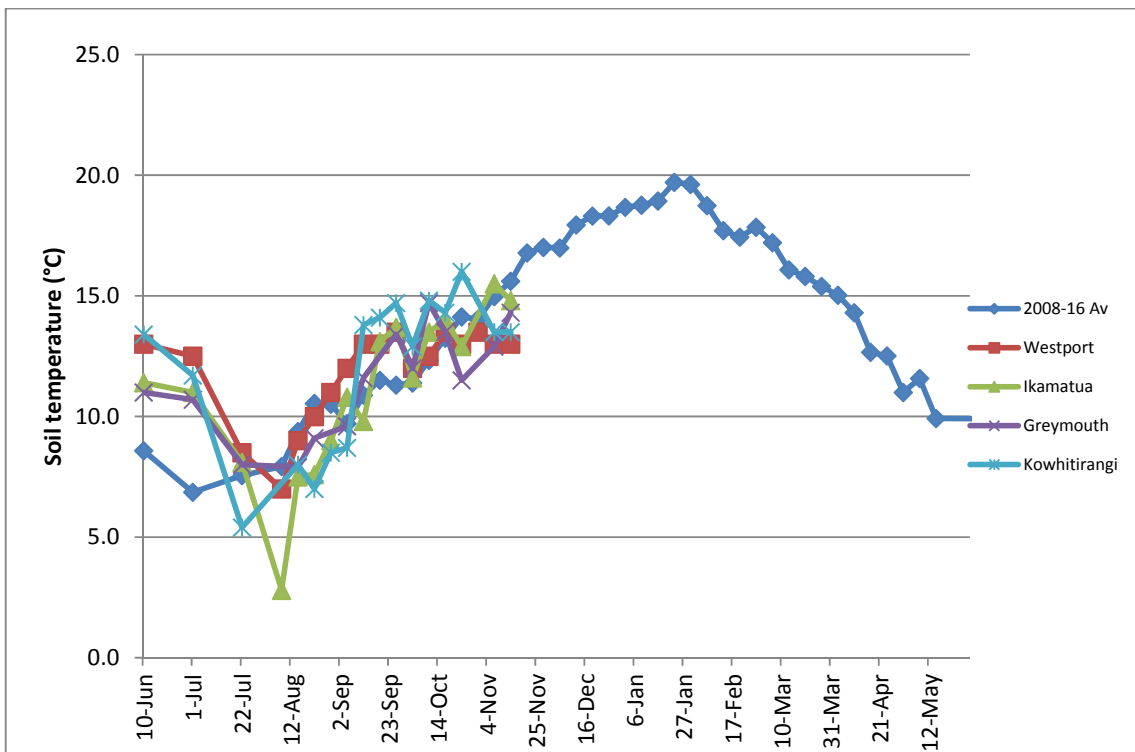
Conditions for farmwalk	Showers rain	Fine warm		Fine!!! Farm still wet
Comments				

NB: pasture quality data are for 1 sample collected from each farm

Weekly Pasture Growth Rates

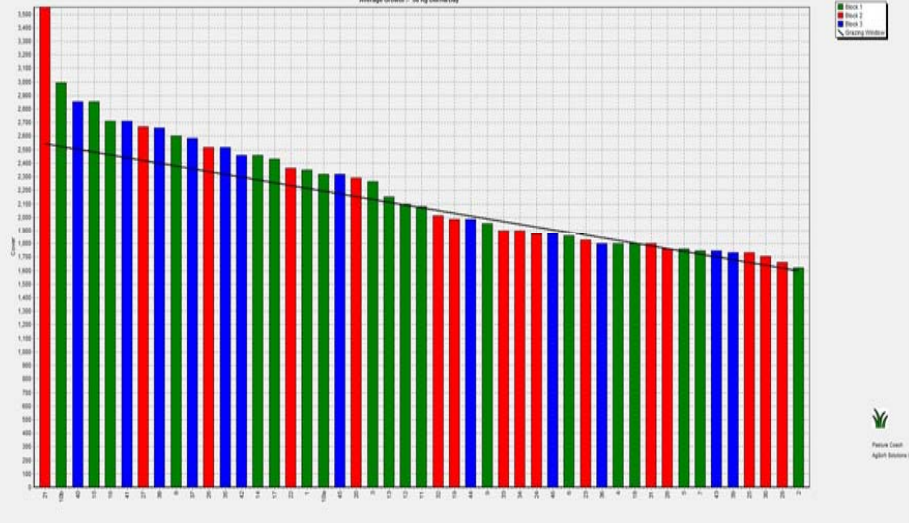


Weekly Soil Temperature



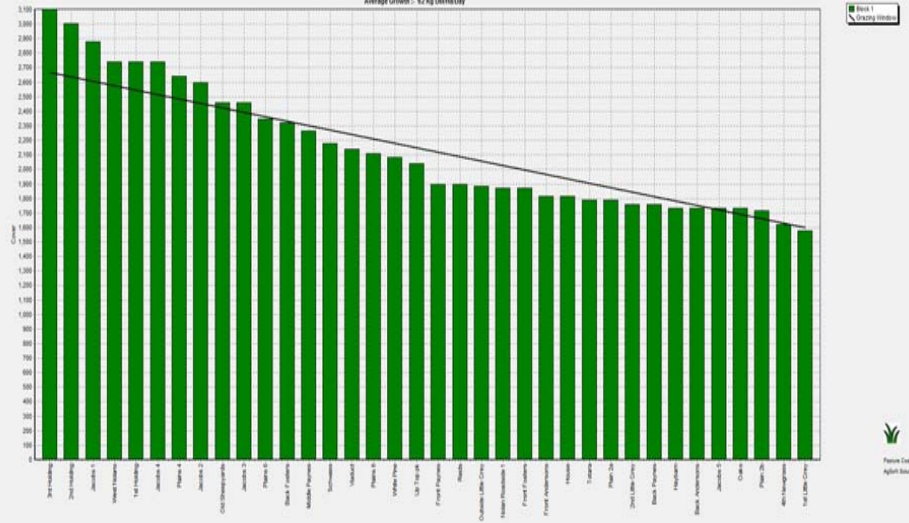
Westport

Farm Name: ADAM & CHEVY GALLAGHER
 Date Read: 21/11/2016
 Average Cover: 2762 Kg DM/ha
 Average Growth: 38 Kg DM/ha/Day



Ikamatua

Farm Name: ANDREW BROWN
 Date Read: 22/11/2016
 Average Cover: 2748 Kg DM/ha
 Average Growth: 12 Kg DM/ha/Day



Greymouth

Farm Name: ANDREW ROBB
 Date Read: 23/11/2016
 Average Cover: 1933 Kg DM/ha
 Average Growth: 40 Kg DM/ha/Day



Kowhitirangi

Farm Name: TAMI & RACHEL LITTLE
 Date Read: 23/11/2016
 Average Cover: 1792 Kg DM/ha
 Average Growth: 15 Kg DM/ha/Day

