

Westland Monitor Farm Project

Weekly Update 3 November 2016

CO comment

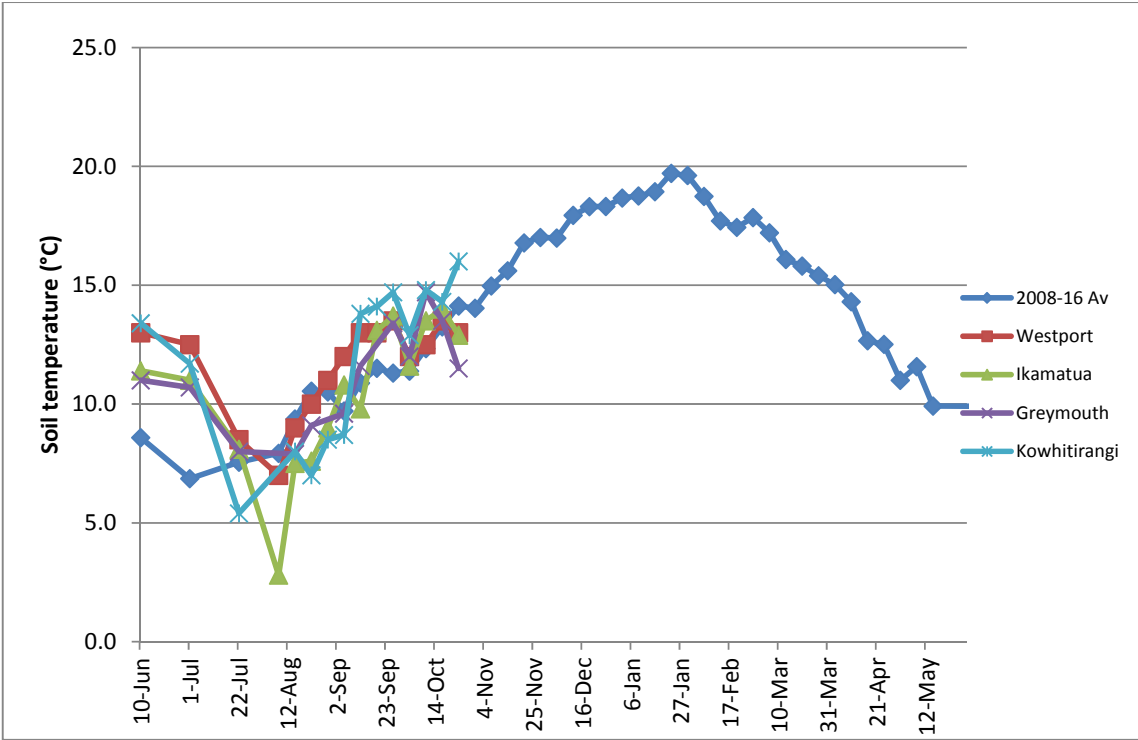
Even with the seemingly constant variability in the weather, pasture growth rates through much of the West Coast continue to be above current stock demands. The wetter weather and softer ground conditions could possibly impact on the utilisation of the available pasture, but the current pasture growth rates will continue to lead to the production of surplus feed on many farms. Grazing management will need to be on the ball in assessing average pasture cover against the targeted level and monitoring the feed wedge target to ensure paddocks are dropped out of the grazing round for conservation. A failure to react quickly enough could impact on pasture quality for the next round, as well as delaying the time when the supplement is harvested and the paddock able to return to the grazing round. Making good supplement is essential for milk production and feeding during the dry period. Good pasture silage/baleage should contain 16% crude protein, 70% digestibility of the dry matter, 30—35% DM for baled silage or 25—30% DM for pit silage, 3.5—4.5 pH and >10 MJME/kg DM. The feed composition can be laboratory tested to ascertain its range of uses. For more information, visit <http://www.dairynz.co.nz/publications/farmfacts/farm-management/>? And particularly Farmfacts 1-43 to 1-50.

Farm Summary

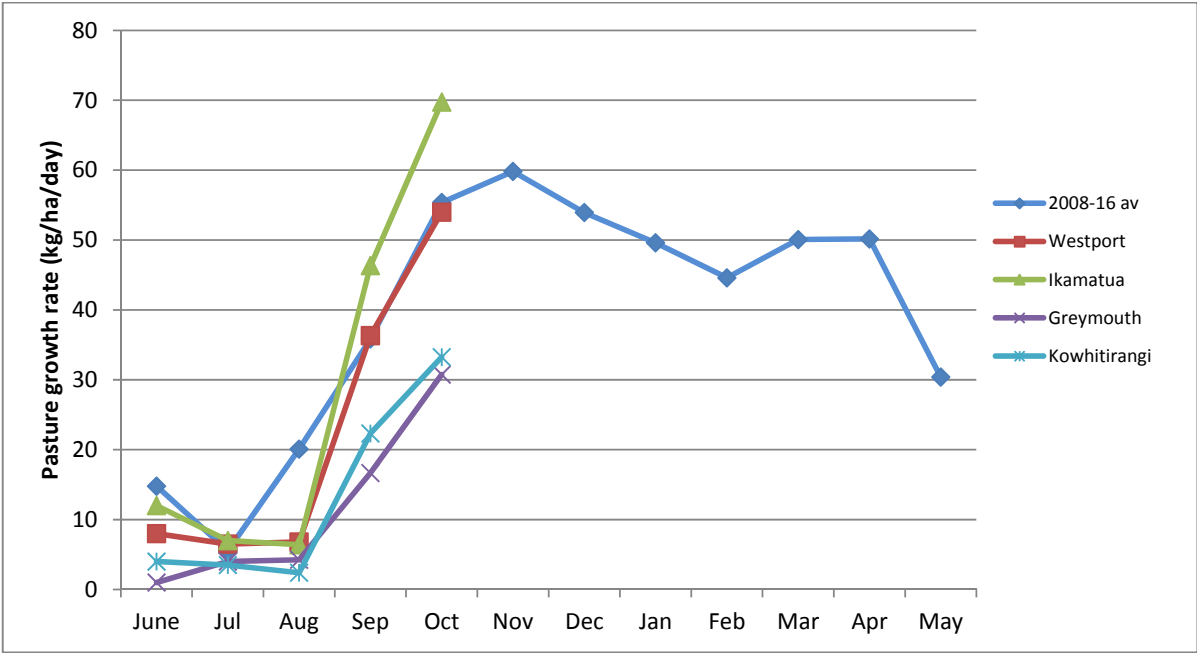
	Westport	Ikamatua	Greymouth	Kowhitirangi
Average cover (kg DM/ha)	2143	2059	1890	1916
APC (27 October)	2161	2016	1916	1914
Rotation length (days)	20	22	20	23
Stocking rate	3.0	2.5	2.6	2.4
Percentage in milk	100	100	97	97
Milksolids kg/cow	2.20	2.15	2.01	1.79
Milksolids kg/ha	6.2	5.3	5.2	4.2
MS/cow (season to date)	3147	14481	13187	3780
MS/ha (season to date)	336	266	305	213
N (kg/ha) year to date	55	67	82	50
Current N application rate kg N/ha	15/20	30	25	20
	10 Oct	11 Oct		12 Oct
DM%	16.9	12.9		12.8
Pasture ME	12.7	12.7		12.7
Pasture NDF	46.2	42.2		42.3
Pasture CP	32.7	27.3		25.5
Target Intake (kg DM/cow/d)	18	20	21	18
Supplement (kg/cow/day)	1.0	2.0	3.5	1.5
Soil temperature (°C)	13.0	12.9	11.5	16.0
Growth Rate (kg DM/day)	56	67	33	38
Rainfall	48	28	44	60
Conditions for farmwalk	Beautiful & fine Total down pour when finished walk	Fine day cold wind		Stunning day very warm Farm very water logged though
Comments	Cheryl spreading grass seed with fertiliser	Andrew busy making supplement		

NB: pasture quality data are for 1 sample collected from each farm

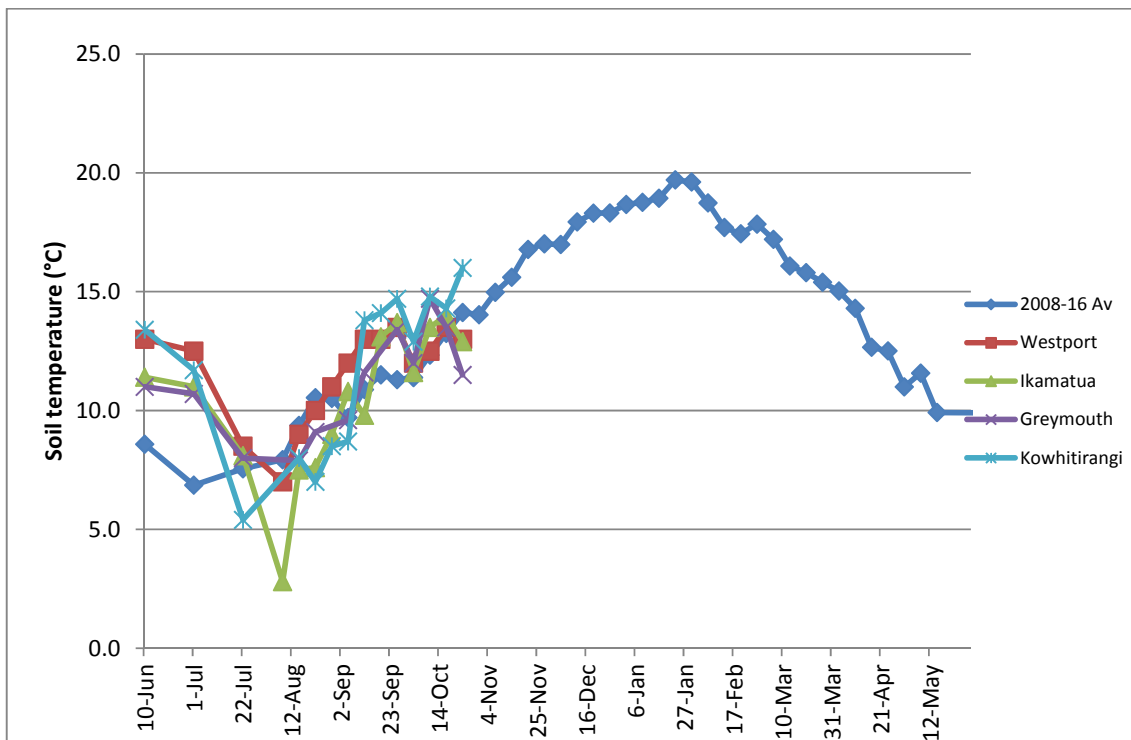
Weekly Pasture Growth Rates



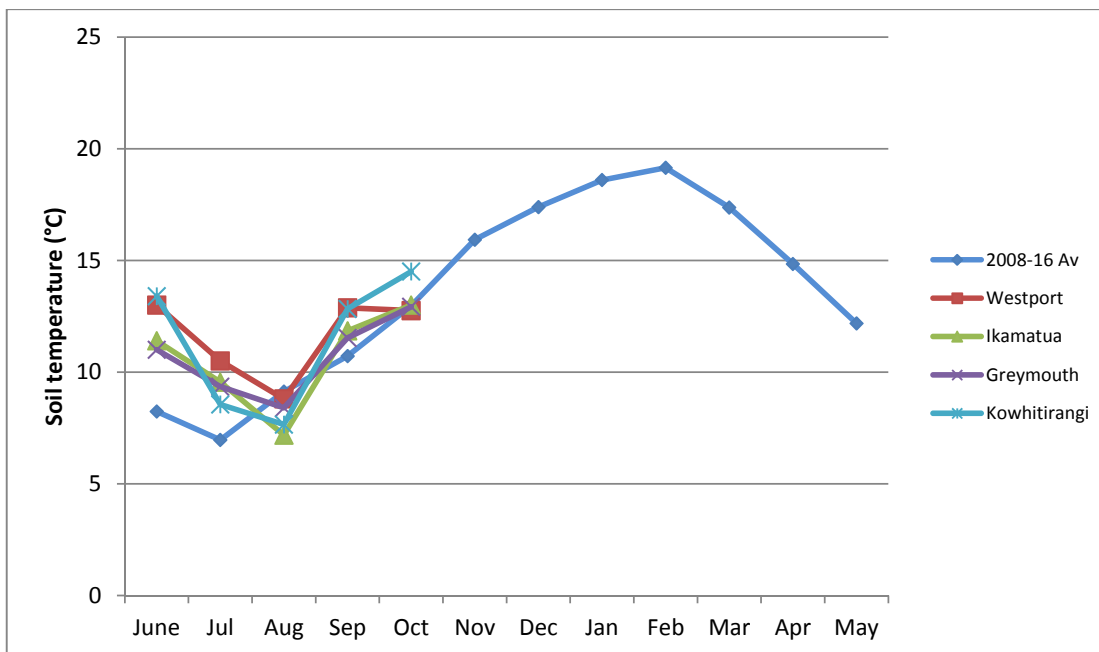
Monthly Pasture Growth Rates



Weekly Soil Temperature

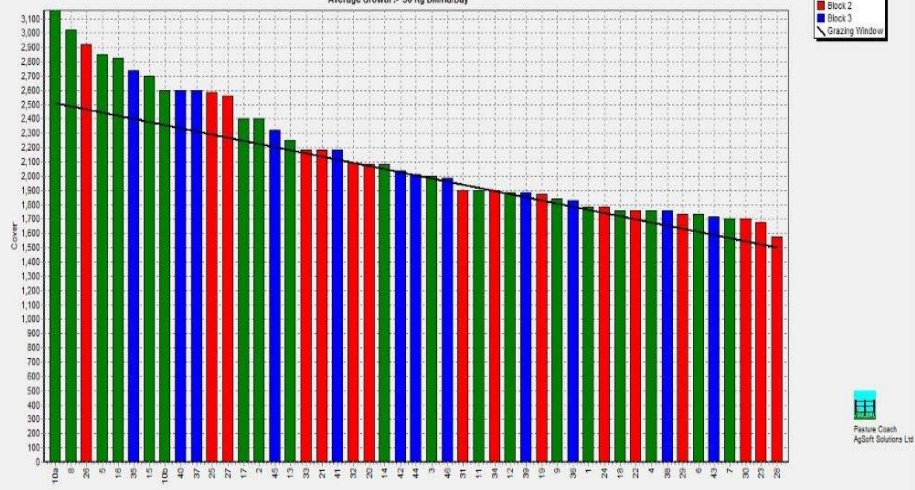


Monthly Soil Temperature



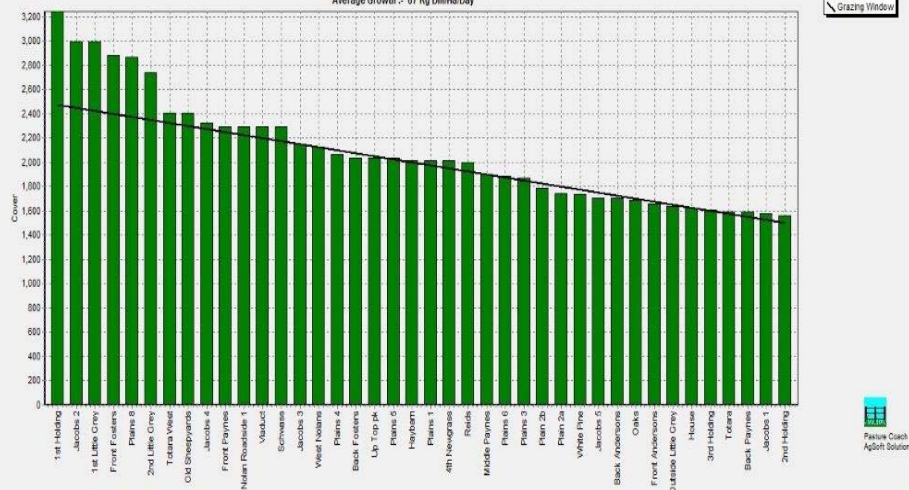
Westport

Farm Name: ADRIAN & CHERYL GALLAGHER
 Date Read: 10/31/2016
 Average Cover: 2143 Kg DM/Ha
 Average Growth: 56 Kg DM/Ha/Day



Ikamatua

Farm Name: ANDREW & NIU MIRIWI
 Date Read: 11/1/2016
 Average Cover: 2059 Kg DM/Ha
 Average Growth: 67 Kg DM/Ha/Day



Greymouth

Farm Name: ANDREW ROBB
 Date Read: 11/2/2016
 Average Cover: 1890 Kg DM/Ha
 Average Growth: 33 Kg DM/Ha/Day



Kowhitirangi

Farm Name: TANE & RACHEL LITTLE
 Date Read: 11/2/2016
 Average Cover: 1916 Kg DM/Ha
 Average Growth: 38 Kg DM/Ha/Day



