

Westland Monitor Farm Project

Weekly Update

CO comment

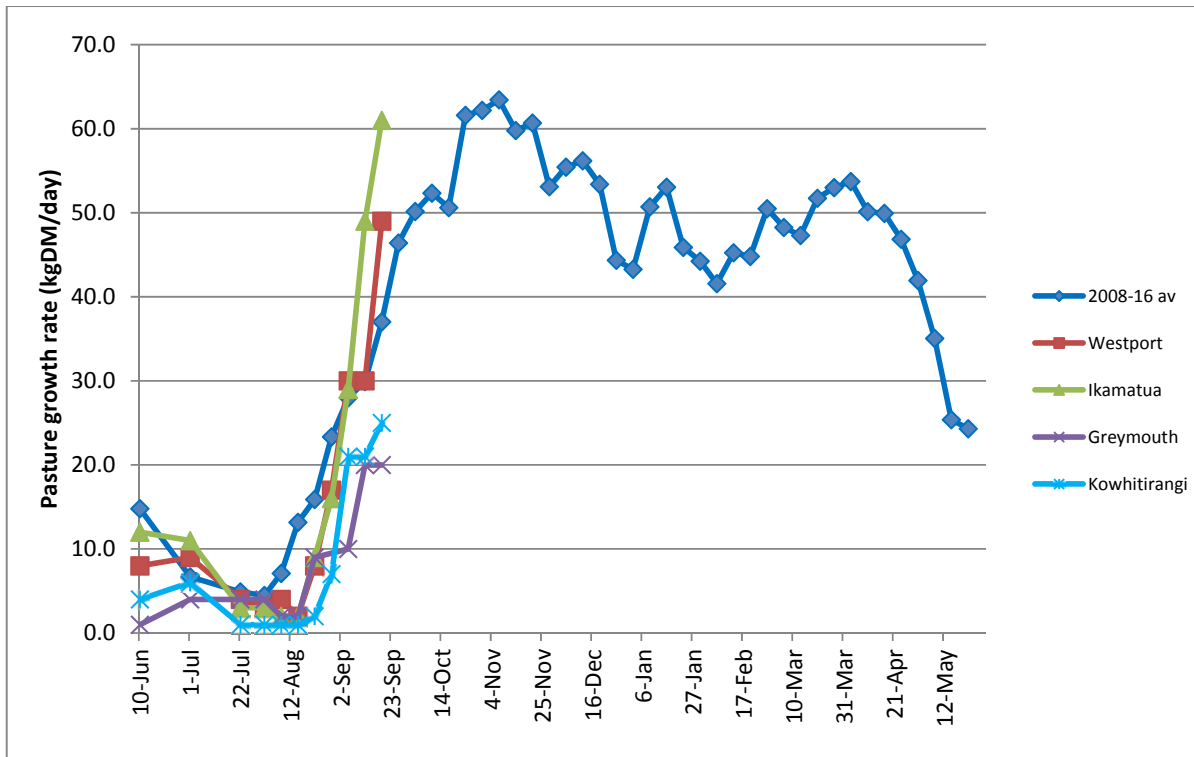
For many, calving has almost finished and the focus needs to shift to the upcoming mating. Vet check all at-risk cows i.e. those that had calving difficulties, any light cows, retained foetal membranes etc. Tail paint all cows four weeks pre mating and record all pre-mating heats. This information will help identify any abnormal cycling trends that might need further investigation. The InCalf programme is designed to help you take a proactive and long term approach to the farm management factors that will be affecting reproductive performance rather than relying on reactive management just prior to mating each year. Use the fertility focus report to benchmark your herd's previous performance (available through MINDA Pro by clicking Report and then Reproductive Analysis). Evaluate the herd reproductive performance from last season, identify opportunities for improvement and devise a reproduction management plan for this season. Check out <http://www.dairynz.co.nz/animal/reproduction/incalf/> for more useful info.

Farm Summary

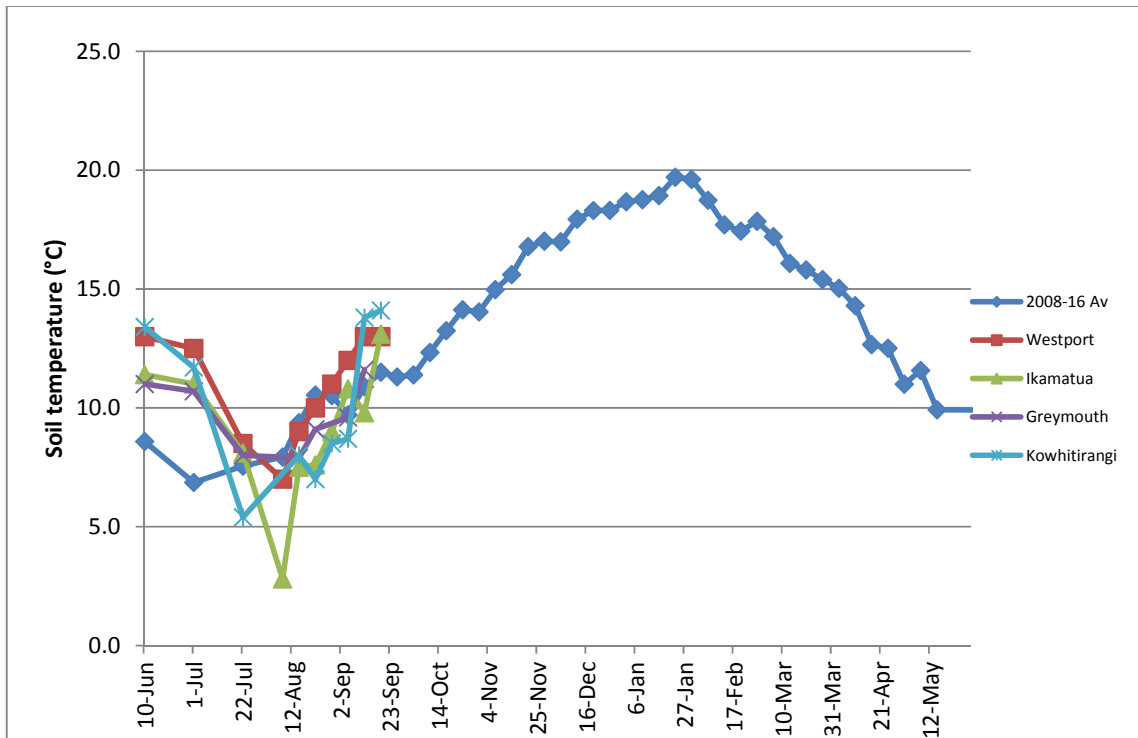
	Westport	Ikamatua	Greymouth	Kowhitirangi
Average cover (kg DM/ha)	1961	2137	1816	1885
APC (22 September)	1859	2080	1826	1855
Rotation length (days)	19	25	23	30
Stocking rate	2.8	2.1	2.3	2.3
Percentage in milk	93	89	90	97
Milksolids kg/cow	1.58-2.11		2.01	1.68
Milksolids kg/ha	4.1-5.5	4.4	4.3	3.7
MS/cow (season to date)	54	33	58	50
MS/ha (season to date)	154	120	128	99
N (kg/ha) year to date	24	30	70	0
Current N application rate kg N/ha	20	30	25	None
	8 Sep	8 Sep	8 Sep	8 Sep
DM%	13.2	14.8		12.4
Pasture ME	>12.7	>12.7		>12.7
Pasture NDF	41.7	40.3		44.1
Pasture CP	34.3	29.3		34.7
Target Intake (kg DM/cow/d)	18	18	20	17
Supplement (kg/cow/day)	2.5	3.0	3.9	
Soil temperature (°C)	13.0	13.1	-	14.1
Growth Rate (kg DM/day)	49	61	20	25
Rainfall	21	25	-	35
Conditions for farmwalk	Strong winds rain	Fine		Fibne
Comments				

NB: pasture quality data are for 1 sample collected from each farm

Weekly Pasture Growth Rates

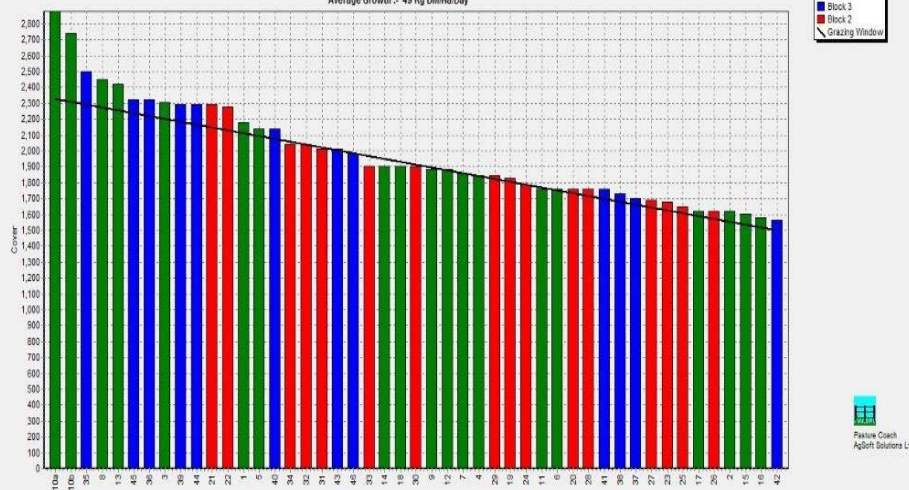


Weekly Soil Temperature



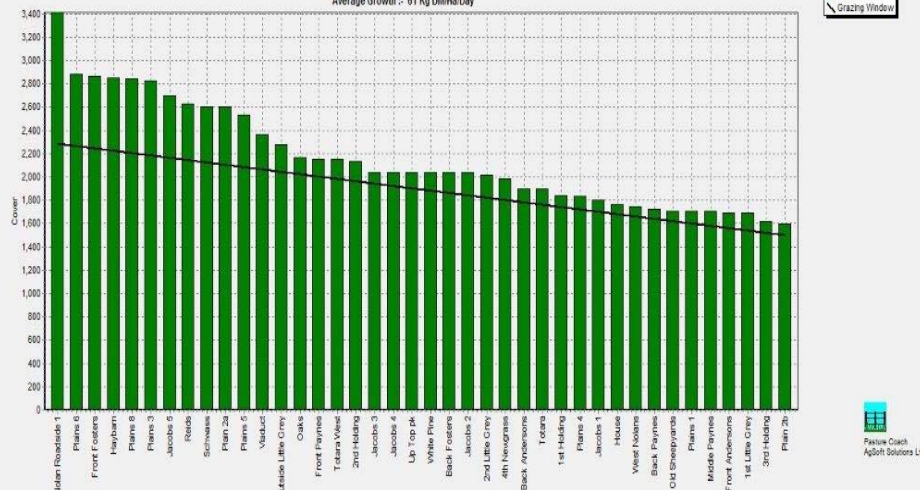
Westport

Farm Name: ADRIAN & CHERYL GALLAGHER
 Date Read: 9/28/2016
 Average Cover: 1961 Kg DM/Ha
 Average Growth: 49 Kg DM/Ha/Day



Ikamatua

Farm Name: ANDREW & NIKI MIRFIN
 Date Read: 9/27/2016
 Average Cover: 2137 Kg DM/Ha
 Average Growth: 61 Kg DM/Ha/Day



Greymouth

Farm Name: ANDREW ROBB
 Date Read: 9/28/2016
 Average Cover: 1816 Kg DM/Ha
 Average Growth: 20 Kg DM/Ha/Day



Kowhitirangi

Farm Name: TANE & RACHEL LITTLE
 Date Read: 9/28/2016
 Average Cover: 1885 Kg DM/Ha
 Average Growth: 25 Kg DM/Ha/Day

