

Westland Monitor Farm Project

Weekly Update 4 January 2017

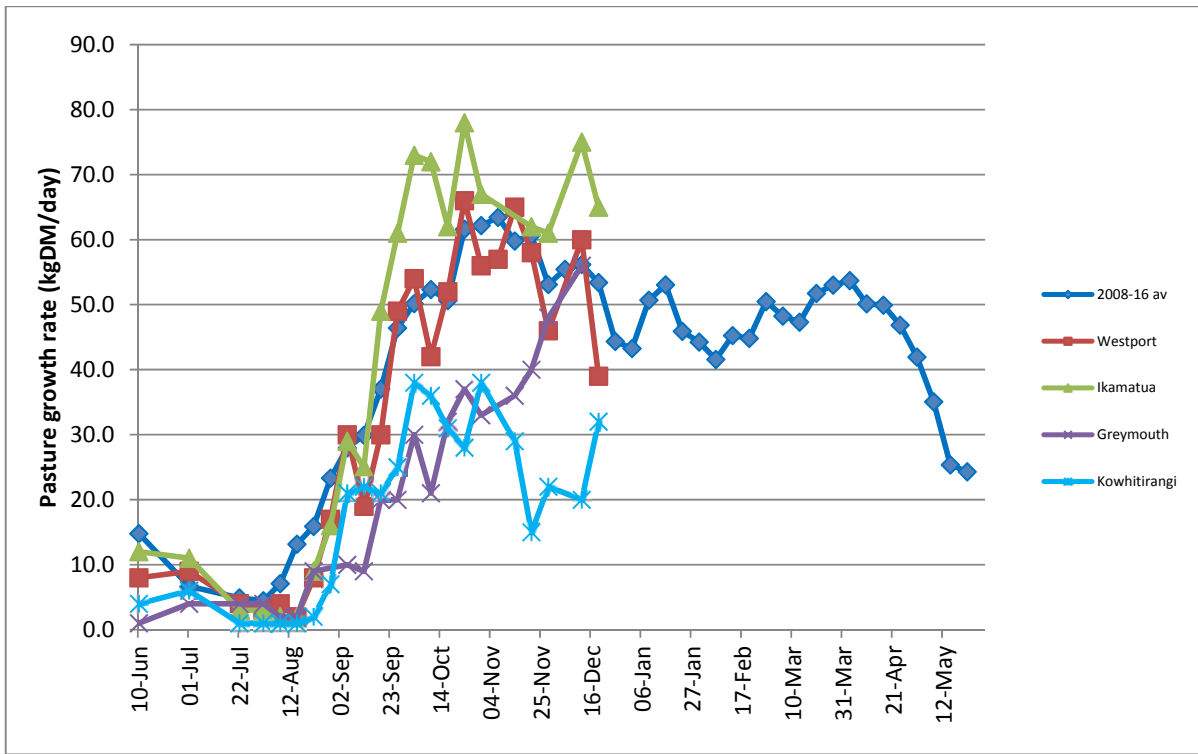
CO comment

Farm Summary

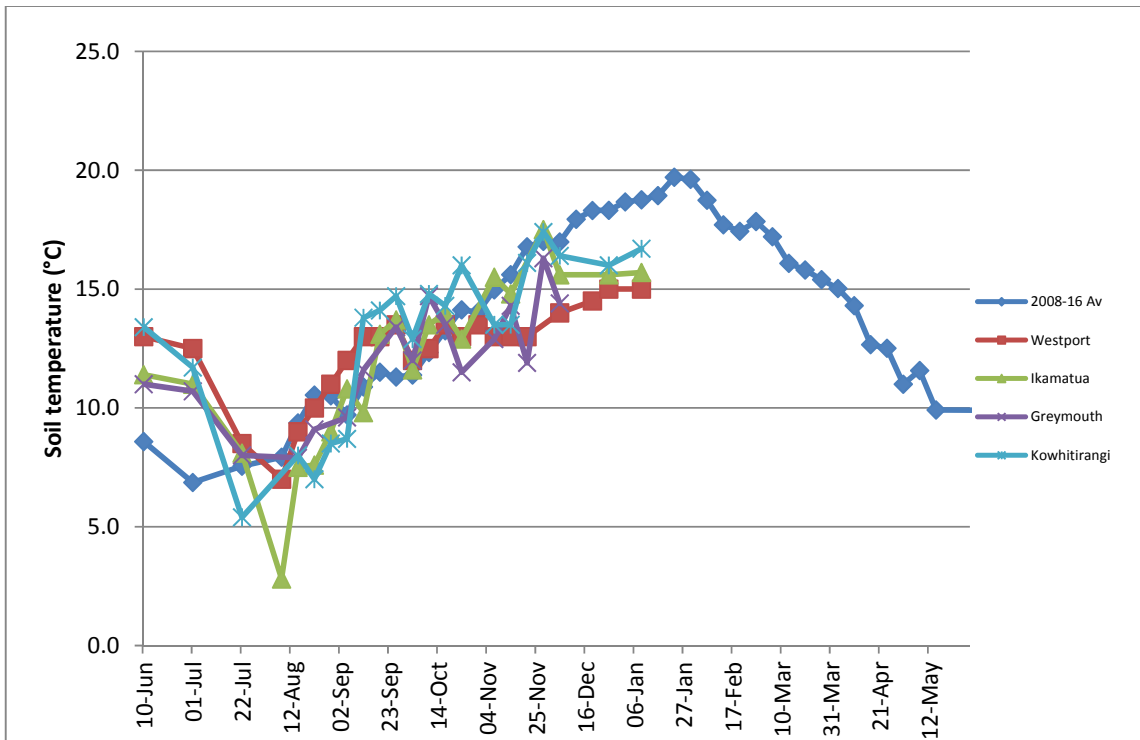
	Westport	Ikamatua	Greymouth	Kowhitirangi
Average cover (kg DM/ha)	1886	2225		1794
APC (23 December)	2002	2111		1862
Rotation length (days)				
Stocking rate	2.8	2.6		2.3
Percentage in milk	96	99		
Milksolids kg/cow	1.74	1.92		
Milksolids kg/ha	4.7	5.1		
MS/cow (season to date)	217	222		
MS/ha (season to date)	620	591		
N (kg/ha) year to date	98	118	133	50
Current N application rate kg N/ha	15	25	20	-
	5 Dec	6 Dec	30 Nov	7 Dec
DM%	17.7	16.8	15.3, 18.2	12.9
Pasture ME	>12.6	>12.7	>12.7, 12.2	12.6
Pasture NDF	43.8	43.7	43.2, 46.8	41.0
Pasture CP	29.4	23.6	29.4, 21.8	29.0
Target Intake (kg DM/cow/d)	18	20		18
Supplement (kg/cow/day)	1.5	2.5		2.5
Soil temperature (°C)	15.0	15.6		16.0
Growth Rate (kg DM/day)				
Rainfall	88	60		100
Conditions for farmwalk	Nice fine day but farm still very wet & pdks underwater	Rain...		Farm very wet & cold. A lot of pdks covered in water, raining
Comments				

NB: pasture quality data are for 1 sample collected from each farm

Weekly Pasture Growth Rates

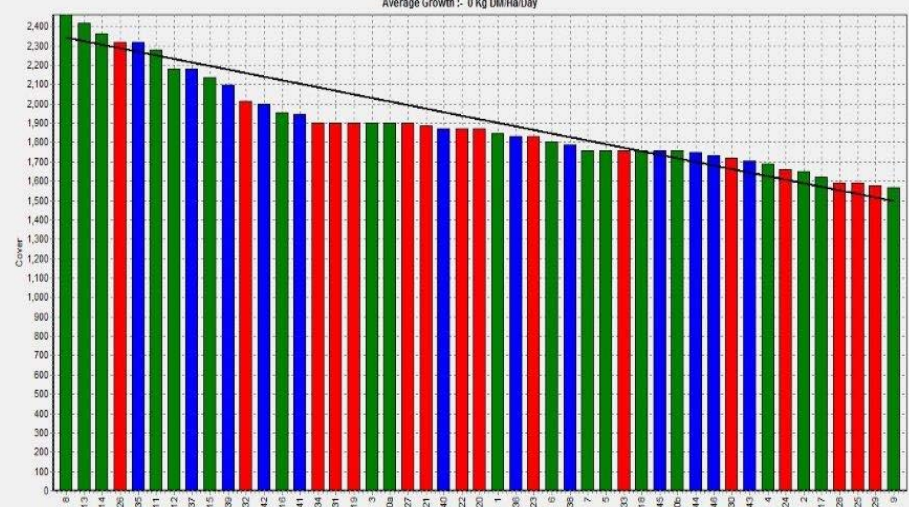


Weekly Soil Temperature



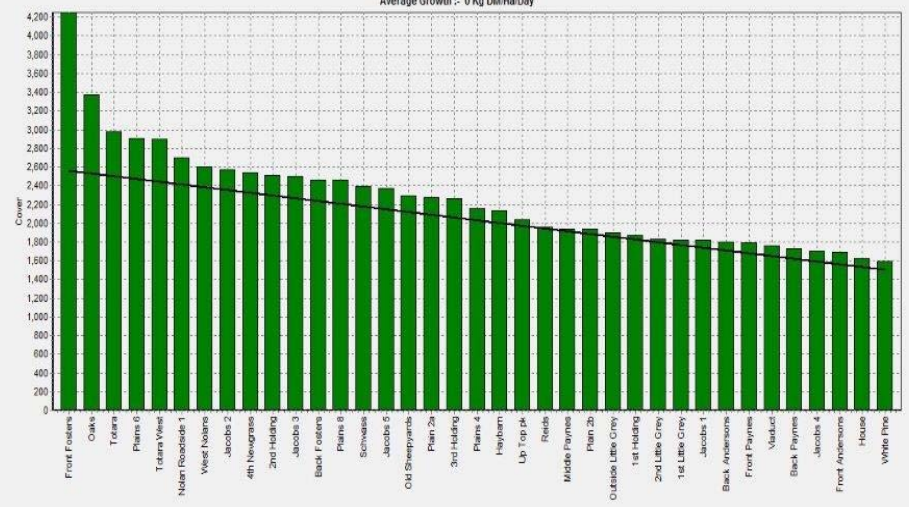
Westport

Farm Name:- ADRIAN & CHERYL GALLAGHER
 Date Read :- 1/2/2017
 Average Cover :- 1886 Kg DM/Ha
 Average Growth :- 0 Kg DM/Ha/Day



Ikamatua

Farm Name:- ANDREW NIKI MIRFIN
 Date Read :- 1/3/2017
 Average Cover :- 2225 Kg DM/Ha
 Average Growth :- 0 Kg DM/Ha/Day



Greymouth

Kowhitirangi

Farm Name:- TANE & RACHEL LITTLE
 Date Read :- 1/4/2017
 Average Cover :- 1794 Kg DM/Ha
 Average Growth :- 0 Kg DM/Ha/Day

