

Westland Monitor Farm Project

Weekly Update 4 March 2016

CO comment

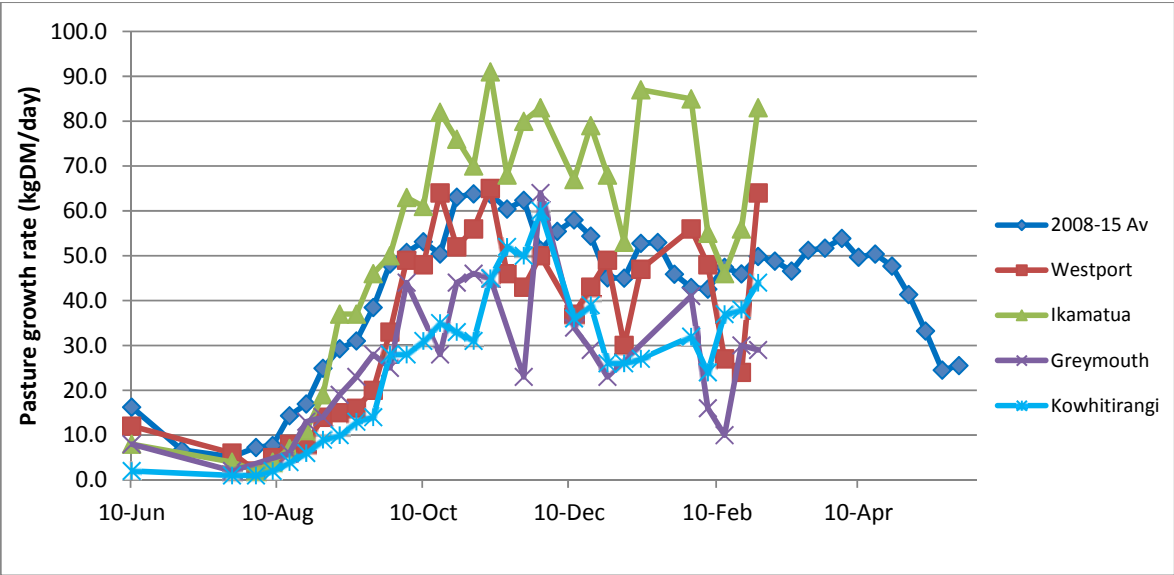
From March, most cows are about 150 days away from the planned start of calving. Generally, cows will lose a little BCS during the two weeks following drying off and will gain no BCS in the month before calving. Therefore, early calving cows will only have around 100 days during which they can gain the required BCS for calving. Cows milked OAD in late lactation will gain about 0.25 BCS more in three months than cows milked TAD over the same period. This can be used as an effective strategy to keep cows milking and gain BCS is OAD milking is started in January/February. The proviso is that the cows must be offered the same amount of feed as if milked TAD. Once we get to March, changing from TAD to OAD will only be an option if cows are already at BCS 4 or greater, as the amount of BCS that will be gained before drying off will be correspondingly smaller. Consequently, more significant action will need to be taken now with those cows that are currently at BCS of less than 4, particularly if they are first calvers.

Farm Summary

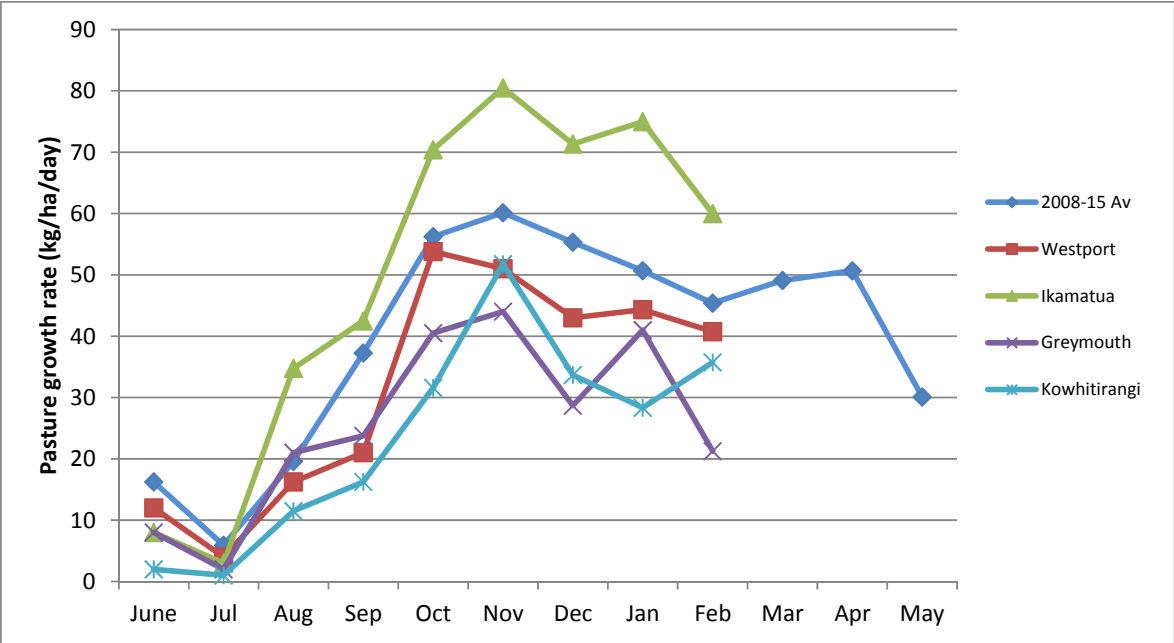
	Westport	Ikamatua	Greymouth	Kowhitirangi
Average cover (kg DM/ha)	2109	2239	2139	2030
APC (26 February 2016)	1939	2073	2123	2047
Rotation length (days)	22	25	21	
Stocking rate	2.7	2.6	2.5	
Percentage in milk	100	100	100	100
Milksolids kg/cow	1.67	1.53	1.42	
Milksolids kg/ha	4.5	3.9	3.5	
MS/cow (season to date)	350.1	314.1	333.2	257.1
MS/ha (season to date)	900	735	776	527
N (kg/ha) year to date	161	255	272	60
Current N application rate kg N/ha	30	30	25	None
	26/2/16	26/2/16	26/2/16	26/2/16
DM%	15	13.1		13.8
Pasture ME	12.1	12.0		11.5
Pasture NDF	46.9	46.6		51.4
Pasture CP	27.3	28.2		24.3
Target Intake (kg DM/cow/d)	18	18	18	
Supplement (kg/cow/day)	2.4	2.0	3.6	
Soil temperature (°C)	20.5	19.4	20.0	20.7
Growth Rate (kg DM/day)	64	83	29	44
Rainfall	17	-	26	
Conditions for farmwalk	Warm fine	Fine warm		Fine warm
Comments				

NB: pasture quality data are for 1 sample collected from each farm

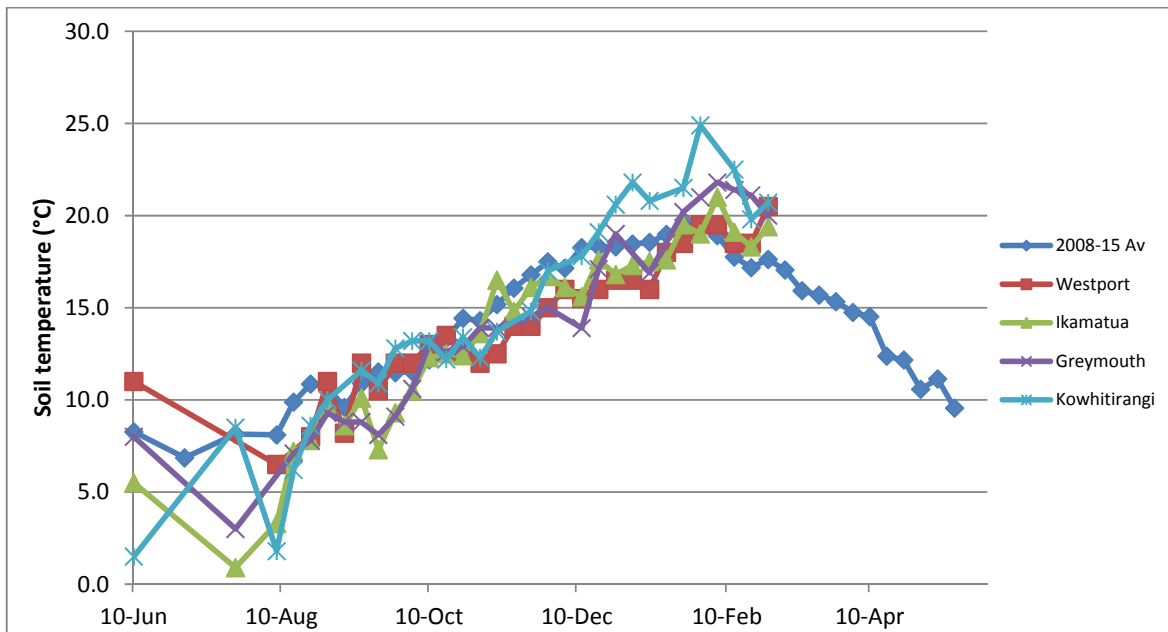
Weekly Pasture Growth Rates



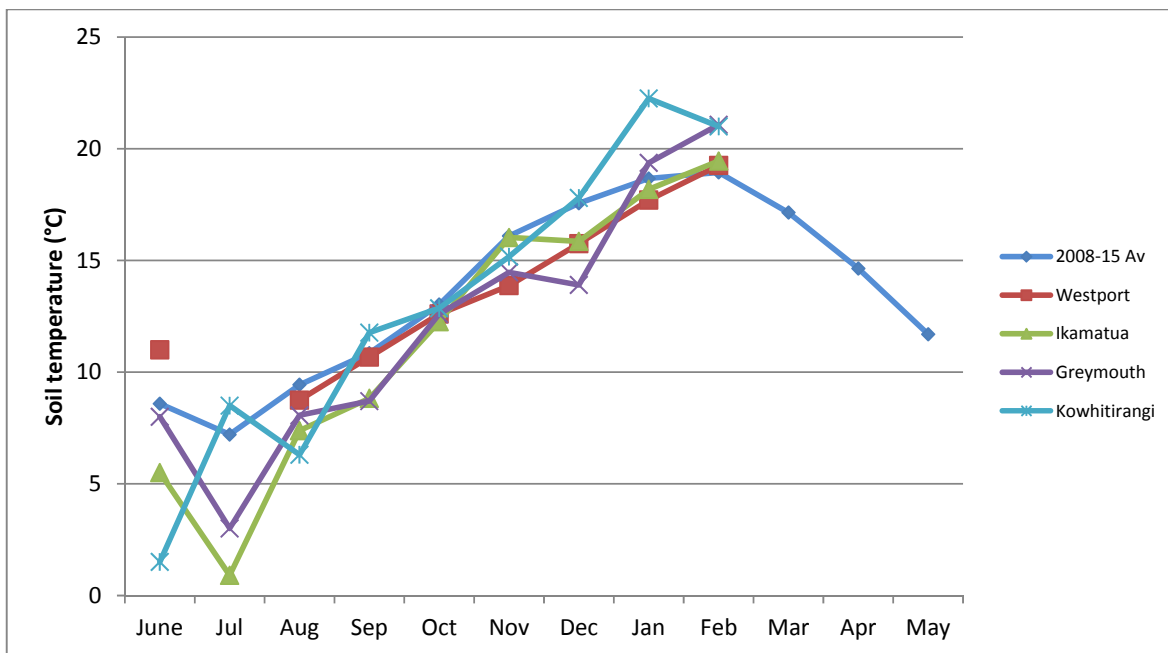
Average monthly growth rate for each region compared with the 6 year average



Weekly Soil Temperature

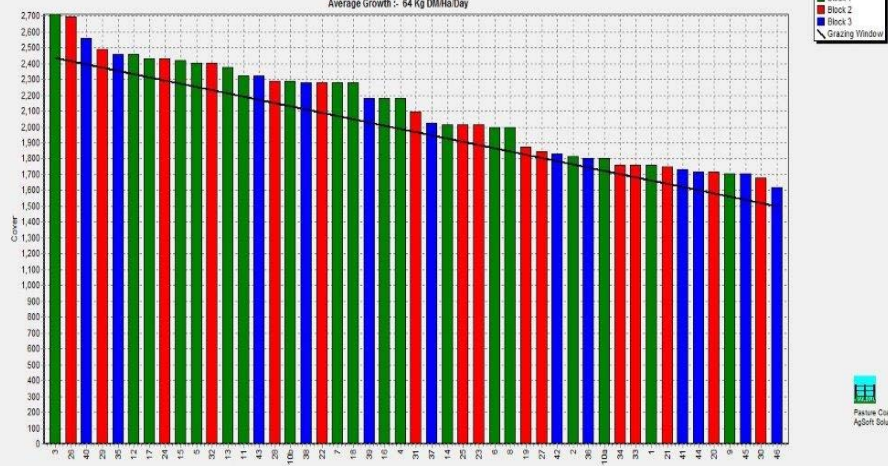


Average monthly soil temperature for each region compared with the 6 year average



Westport

Farm Name: ADRIAN & CHERYL GALLAGHER
 Date Read: 2/28/2016
 Average Cover: 2109 Kg DM/ha
 Average Growth: 64 Kg DM/ha/Day



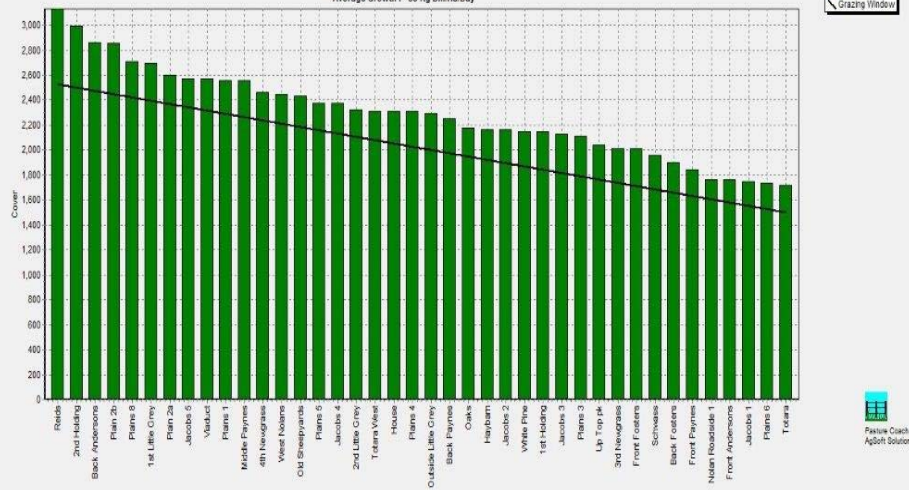
Block 1
 Block 2
 Block 3
 Grazing Window



1500 Residual 2438 Pre-grazing Save Print Sort Order Tools Rotation Calc Zoom In Zoom Out Zoom 100%

Ikamatua

Farm Name: ANDREW & NIKI MIRFIN
 Date Read: 2/29/2016
 Average Cover: 2239 Kg DM/ha
 Average Growth: 83 Kg DM/ha/Day



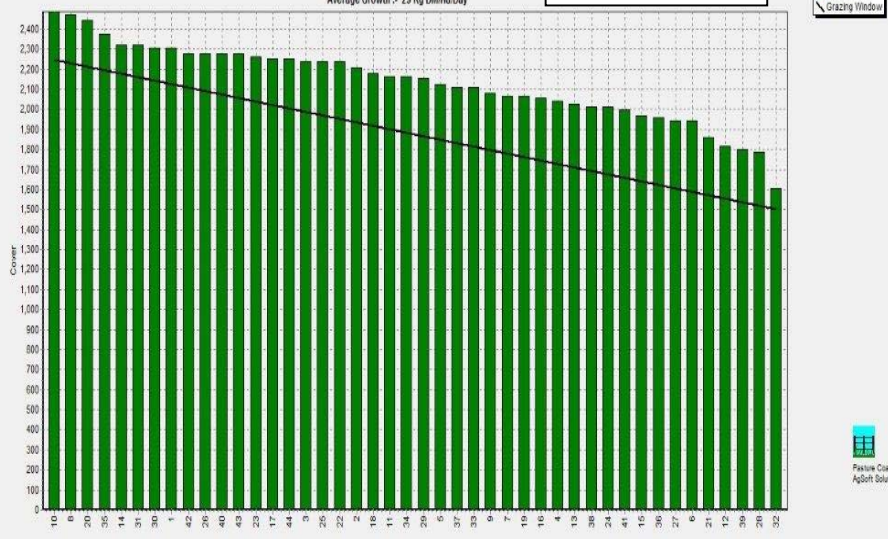
Block 1
 Grazing Window



1500 Residual 2530 Pre-grazing Save Print Sort Order Tools Rotation Calc Zoom In Zoom Out Zoom 100%

Greymouth

Farm Name: ANDREW ROBB
 Date Read: 3/1/2016
 Average Cover: 2139 Kg DM/ha
 Average Growth: 29 Kg DM/ha/Day



Block 1
 Grazing Window



1500 Residual 2246 Pre-grazing Save Print Sort Order Tools Rotation Calc Zoom In Zoom Out Zoom 100%

Kowhitirangi

