

# Westland Monitor Farm Project

## Weekly Update – 5<sup>th</sup> August 2016

### CO comment

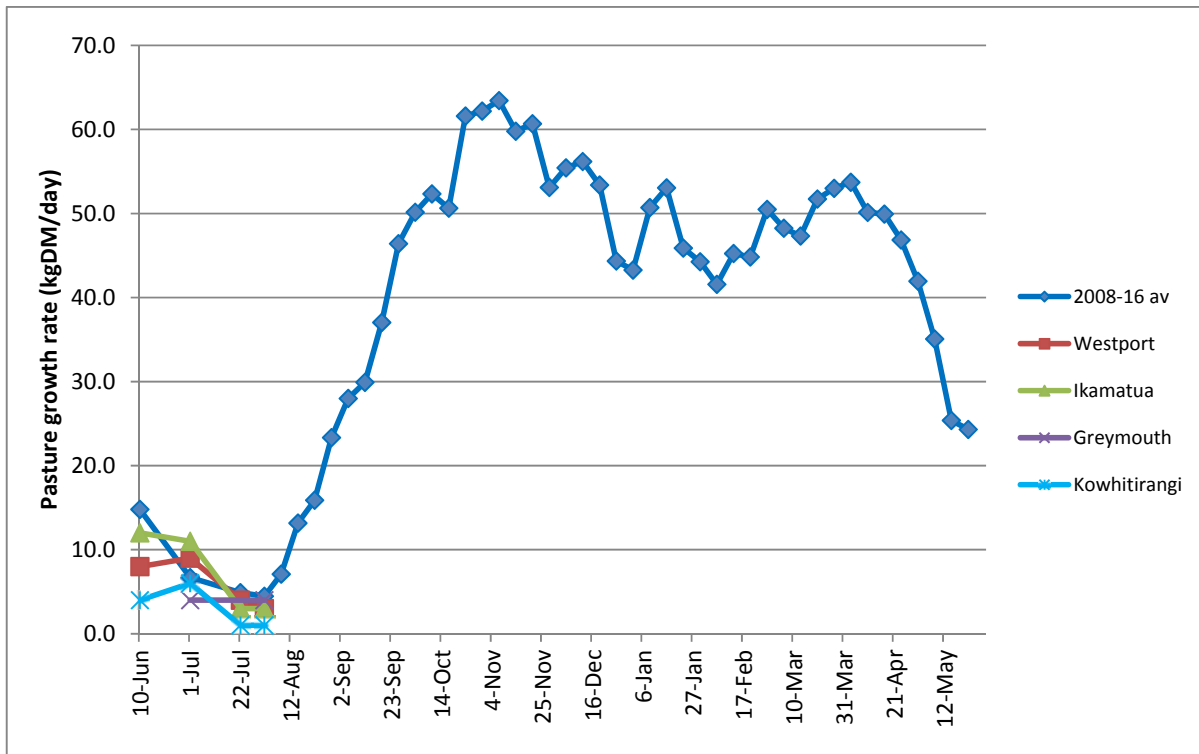
Now that calving is starting to get into full swing for everyone, it will be important to keep making the time to continue the farm walks and monitor average pasture covers, particularly which way they're trending. Use your Spring Rotation Planner to monitor your position and ensure good decisions are made. With the tighter financial situation and uncertainty over how long the current wet underfoot conditions will persist, this will ensure that supplements are fed only when required and not wasted. Aim to offer freshly calved cows at least 12-14 kgDM/day if Friesian and 10-12 kgDM/cow if Jersey. Monitor your grazing residuals to ensure your targets are achieved. If you leave a higher than desired residual this grazing try to highlight these paddocks for earlier grazing next round to tidy them up. Continue with magnesium supplementation to all springing and freshly calved cows.

### Farm Summary

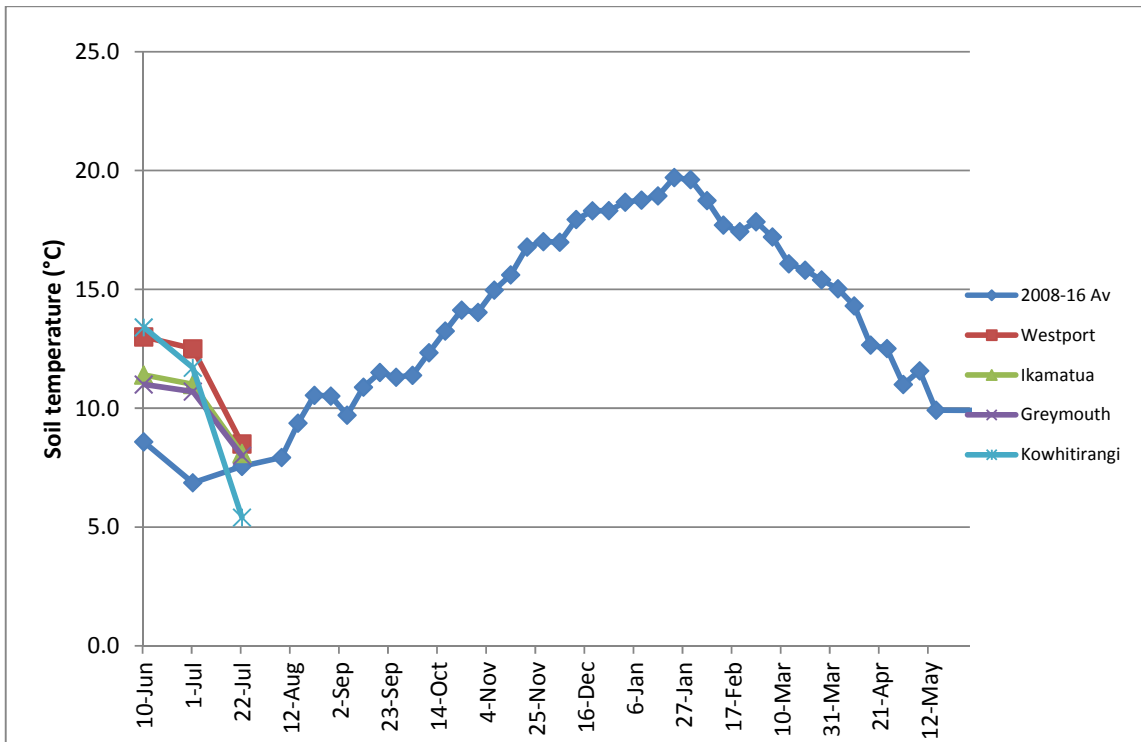
	Westport	Ikamatua	Greymouth	Kowhitirangi
Average cover (kg DM/ha)	2079	2368	2026	1898
APC (l)				
Rotation length (days)	150			
Stocking rate				
Percentage in milk				
Milksolids kg/cow				
Milksolids kg/ha				
MS/cow (season to date)				
MS/ha (season to date)				
N (kg/ha) year to date				
Current N application rate kg N/ha				
DM%				
Pasture ME				
Pasture NDF				
Pasture CP				
Target Intake (kg DM/cow/d)	13			
Supplement (kg/cow/day)	2.8			
Soil temperature (°C)	7.0	9.0	8.2	7.1
Growth Rate (kg DM/day)	3	3	4	1
Rainfall	76		52	
Conditions for farmwalk	3	4	4	2
Comments				

NB: pasture quality data are for 1 sample collected from each farm

### Weekly Pasture Growth Rates

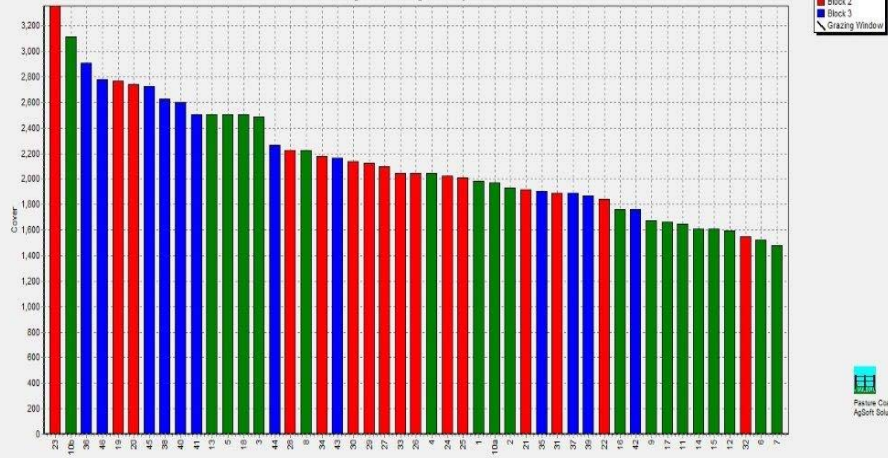


### Weekly Soil Temperature



### Westport

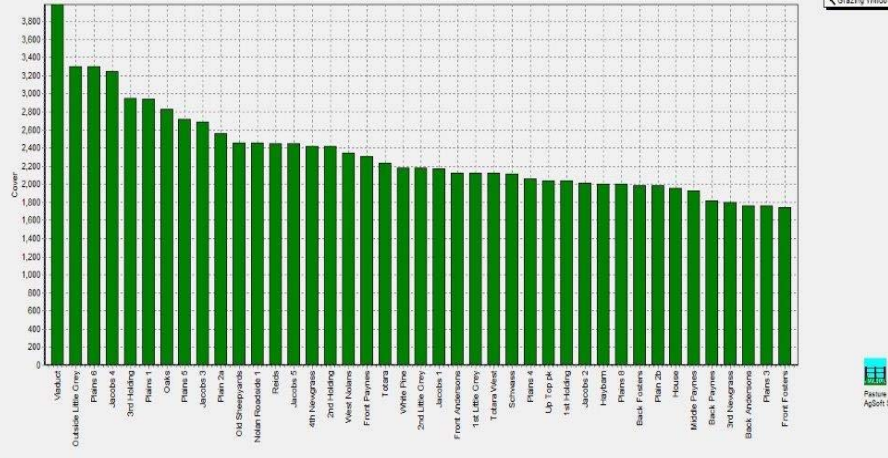
Farm Name: ADRIAN & CHERYL GALLAGHER  
 Date Read: 7/18/2016  
 Average Cover: 2144 Kg DM/Ha  
 Average Growth: 4 Kg DM/Ha/Day



Residual: 0 Pre-grazing | Save | Print | Sort Order | Tools | Rotation Calc | Zoom In | Zoom Out | Zoom 100%

### Ikamatua

Farm Name: ANDREW & NIKI MIREN  
 Date Read: 7/18/2016  
 Average Cover: 2356 Kg DM/Ha  
 Average Growth: 3 Kg DM/Ha/Day

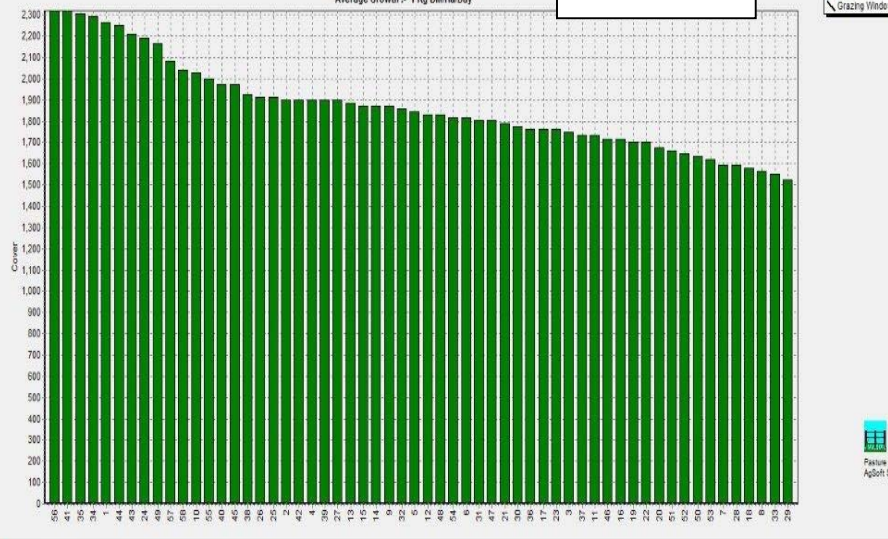


Residual: 0 Pre-grazing | Save | Print | Sort Order | Tools | Rotation Calc | Zoom In | Zoom Out | Zoom 100%

### Greymouth

### Kowhitirangi

Farm Name: TANE & RACHEL LITTLE  
 Date Read: 7/20/2016  
 Average Cover: 1899 Kg DM/Ha  
 Average Growth: 1 Kg DM/Ha/Day



Residual: 0 Pre-grazing | Save | Print | Sort Order | Tools | Rotation Calc | Zoom In | Zoom Out | Zoom 100%







