

Westland Monitor Farm Project

Weekly Update 7 October 2016

CO comment

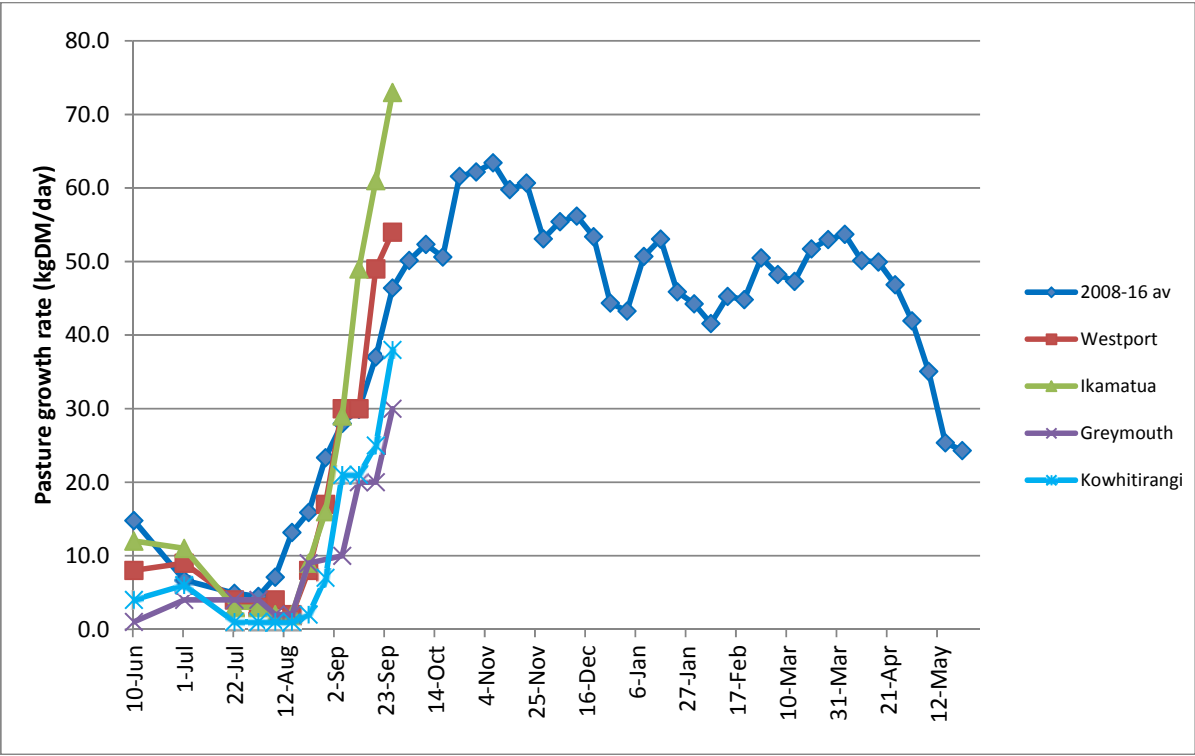
Pasture growth rates have lifted through most areas of the West Coast over the past few weeks and this has resulted in what may be surplus grass starting to appear on many farms. Have your grazing residuals been starting to lift on a consistent basis? Management of any pasture surplus will be critical to ensure pasture quality is maintained for subsequent grazing rounds. Any delays in getting surplus pasture ensiled through later identification of the pasture surplus will increase grazing pressure on the remaining grazing area and could lead to poorer quality silage and slower pasture regrowth on those areas out of the grazing round. Don't forget that the industry target submission rate for the first three weeks of mating is 90% and heat detection during the next month must be seen as a high priority job. Taking pre-mating heats is a key strategy in achieving this target, as is identifying and remedying any reasons for non-cycling.

Farm Summary

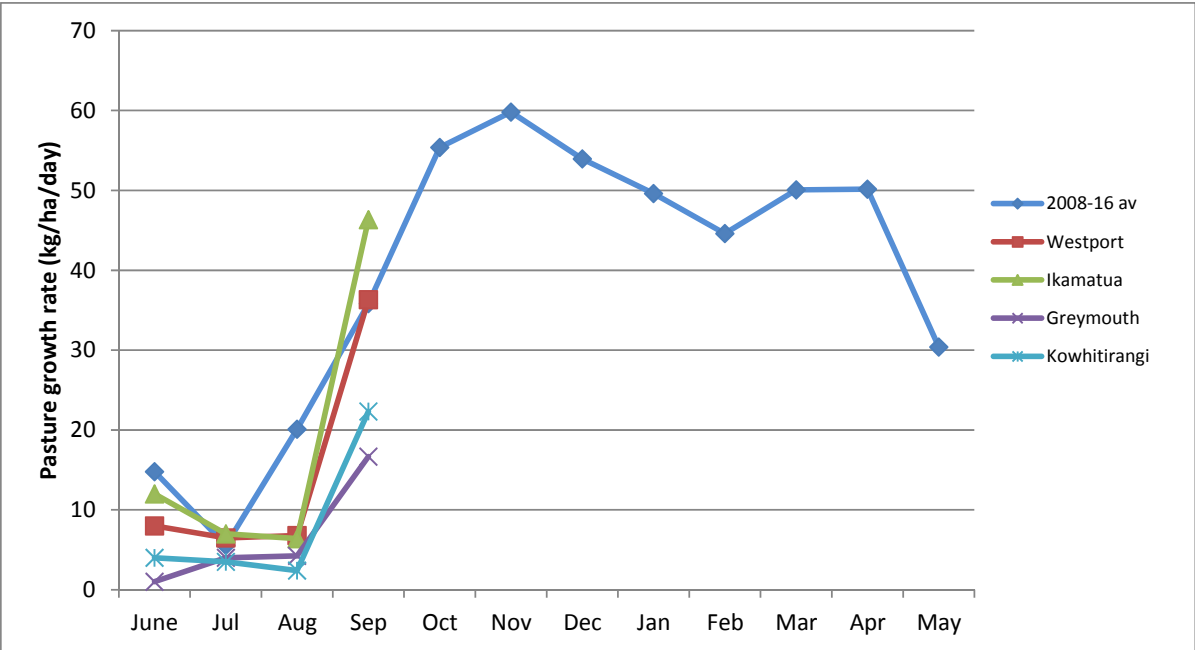
	Westport	Ikamatua	Greymouth	Kowhitirangi
Average cover (kg DM/ha)	2060	2274	1855	1940
APC (30 September)	1961	2137	1816	1885
Rotation length (days)	19	25	23	28
Stocking rate	3.0	2.3	2.4	2.3
Percentage in milk	97	94	95	98
Milksolids kg/cow	2.18	2.08	2.01	1.71
Milksolids kg/ha	5.9	4.8	4.6	3.9
MS/cow (season to date)	2950	13119	11853	3533
MS/ha (season to date)	189	164	161	127
N (kg/ha) year to date	35	40	70	30
Current N application rate kg N/ha	20	30	25	30
	8 Sep	8 Sep	8 Sep	8 Sep
DM%	13.2	14.8		12.4
Pasture ME	>12.7	>12.7		>12.7
Pasture NDF	41.7	40.3		44.1
Pasture CP	34.3	29.3		34.7
Target Intake (kg DM/cow/d)	18	20	20	17
Supplement (kg/cow/day)	1.0	3.0	3.5	1.0
Soil temperature (°C)	13.5	13.7	13.4	14.7
Growth Rate (kg DM/day)	54	73	30	38
Rainfall	13.0	25	37.5	58.5
Conditions for farmwalk	Fine, warm	Fine, warm		Rain
Comments				

NB: pasture quality data are for 1 sample collected from each farm

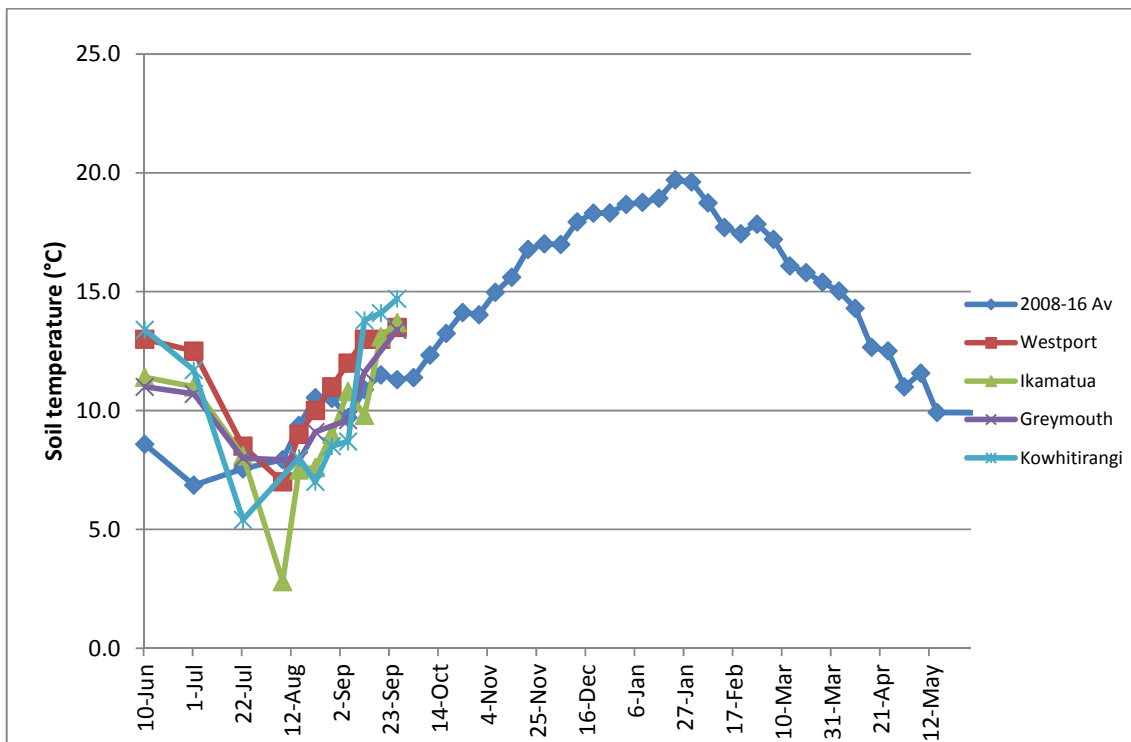
Weekly Pasture Growth Rates



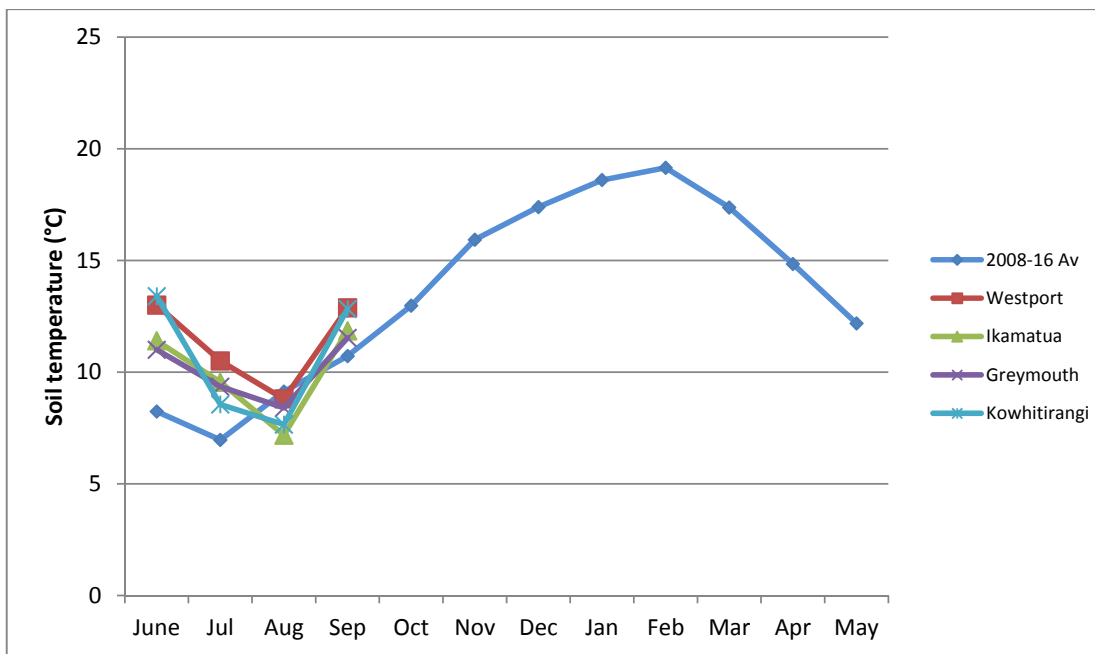
Monthly Pasture Growth Rates



Weekly Soil Temperature

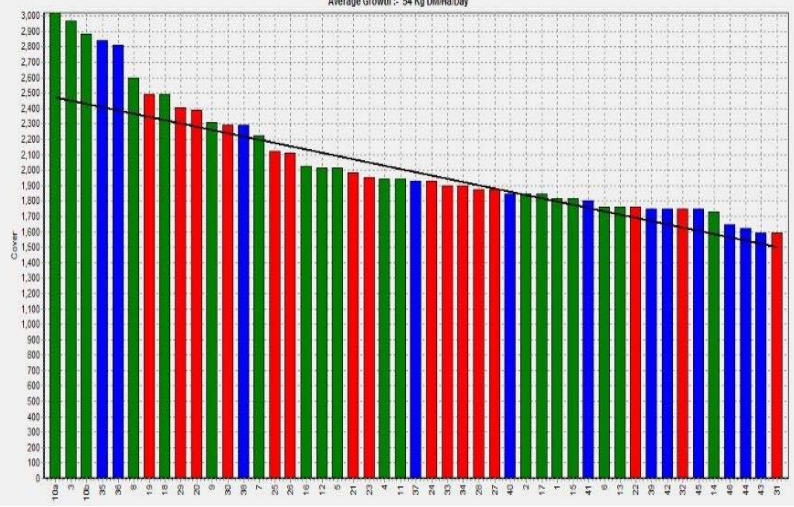


Monthly Soil Temperature



Westport

Farm Name: ANDRAN & CHERYL GALLAGHER
 Date Read: 18/3/2016
 Average Cover: 2060 Kg DM/ha
 Average Growth: 54 Kg DM/ha/Day

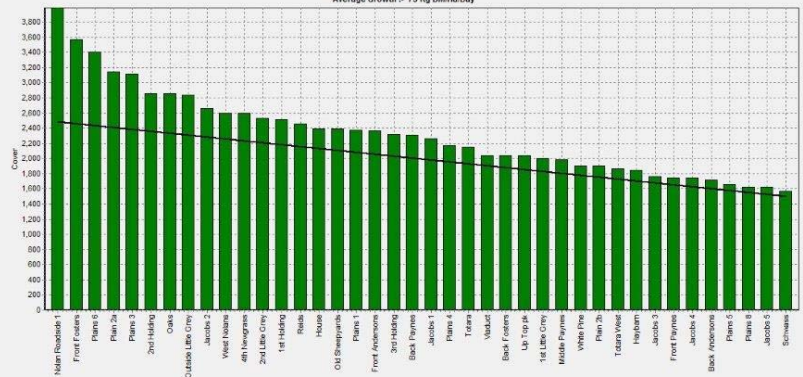


Block 1
 Block 2
 Block 3
 Grazing Window



Ikamatua

Farm Name: ANDREW & NIGI MIREN
 Date Read: 10/4/2016
 Average Cover: 2274 Kg DM/ha
 Average Growth: 73 Kg DM/ha/Day



Block 1
 Grazing Window



1500 Residual 0681 Pre-grazing Save Print Sort Order Tools Rotation Calc Zoom In Zoom Out Zoom 100%

Greymouth

Farm Name: ANDREW ROBB
 Date Read: 10/5/2016
 Average Cover: 1855 Kg DM/ha
 Average Growth: 30 Kg DM/ha/Day

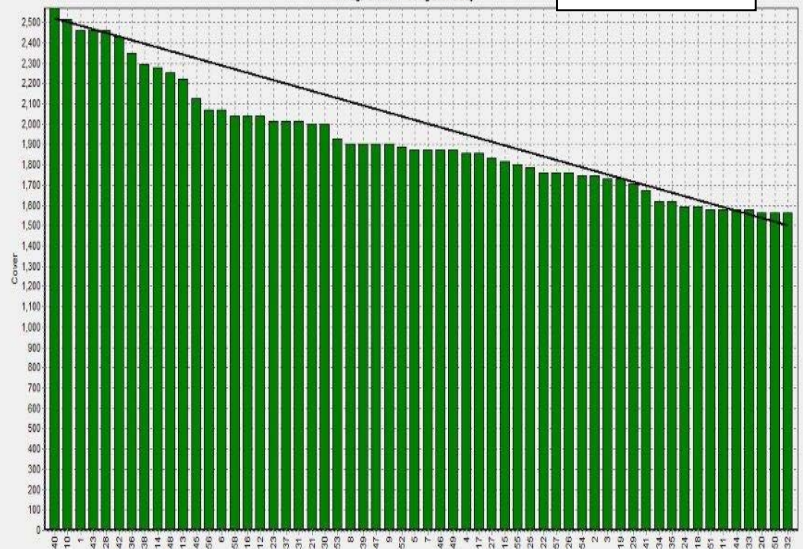


Block 1
 Grazing Window



Kowhitirangi

Farm Name: TANE & RACHEL LITTLE
 Date Read: 10/5/2016
 Average Cover: 1940 Kg DM/ha
 Average Growth: 38 Kg DM/ha/Day



Block 1
 Grazing Window



