

Westland Monitor Farm Project

Weekly Update 8 September 2016

CO comment

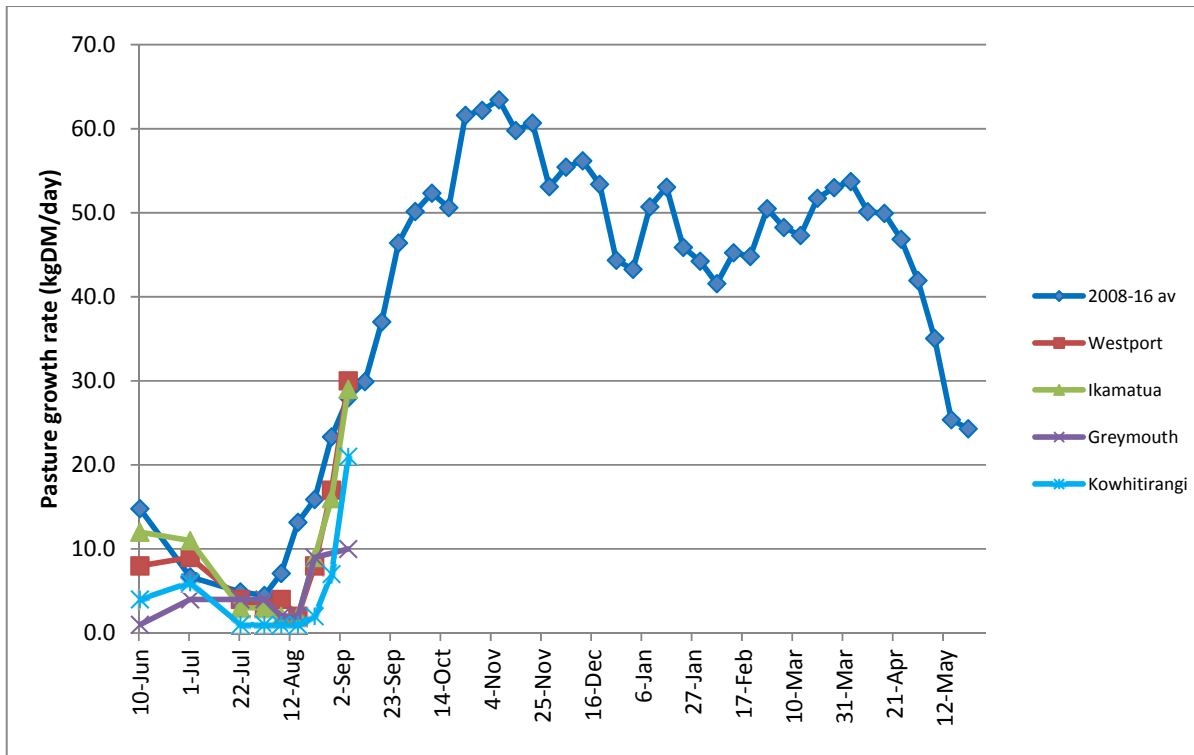
Pasture growth rates are finally starting to increase, but be careful not to speed up the rotation too quickly. Aim to be on your shortest spring rotation at balance date (when daily demand/ha equals daily growth/ha). If your rotation gets too quick and the pasture plants are grazed before the third leaf emerges, this can result in the average pasture cover (APC) dropping below 1900 kgDM/ha. As a consequence, subsequent pasture growth rates will be reduced. Grazing a paddock down to lower residuals is acceptable on a longer rotation as the paddock has time to get to the third leaf stage again before grazing. Lower residuals are also acceptable if the pasture has not been damaged (pugged) during the grazing. It is the frequency of grazing that has the biggest effect on subsequent pasture growth, not the intensity of grazing.

Farm Summary

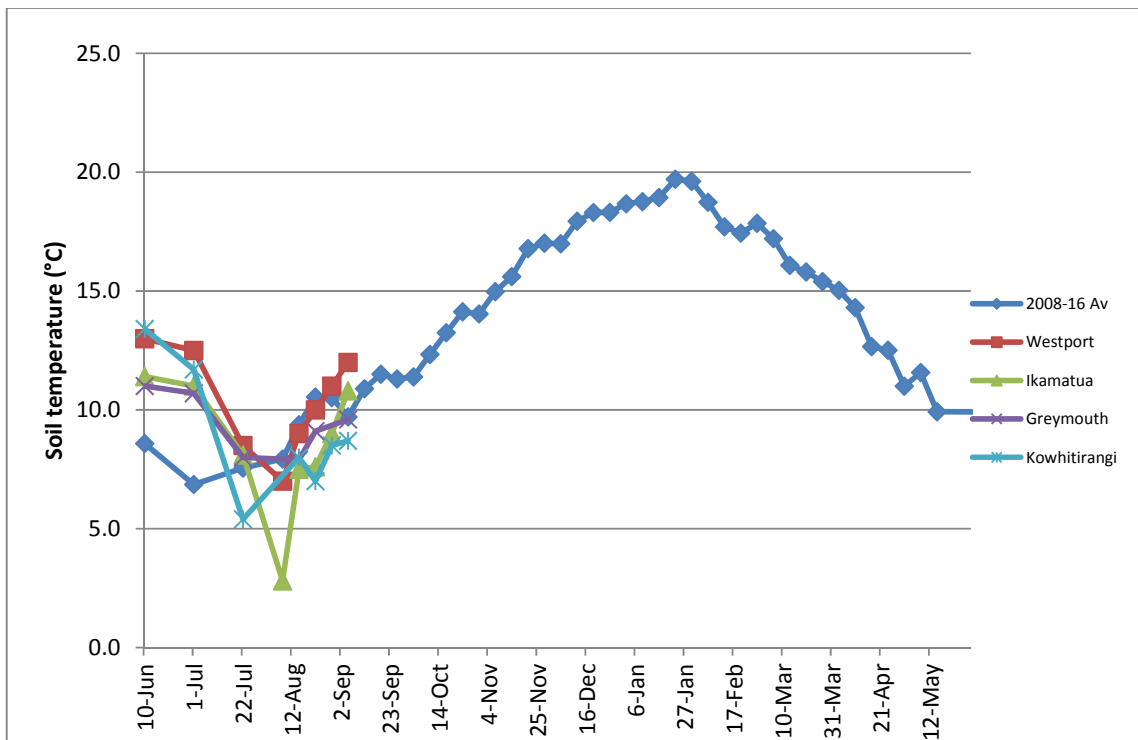
	Westport	Ikamatua	Greymouth	Kowhitirangi
Average cover (kg DM/ha)	1942	1998	1898	1822
APC	1874	2080		1798
Rotation length (days)	36	30	37	
Stocking rate	2.6	1.9	1.9	
Percentage in milk	82	77	83	77
Milksolids kg/cow	1.49	1.69	2.01	1.54
Milksolids kg/ha	2.7	3.1	3.5	2.4
MS/cow (season to date)				
MS/ha (season to date)	51	48	43	34
N (kg/ha) year to date	17	11	47	0
Current N application rate kg N/ha	20	30	30	None
	8 Aug	9 Aug		10 Aug
DM%	19.1	17.8		21.1
Pasture ME	12.1	12.7		12.7
Pasture NDF	46.2	35.7		37.3
Pasture CP	23.3	18.3		17.6
Target Intake (kg DM/cow/d)	15	18	18	
Supplement (kg/cow/day)	1	5.5	5.5	4.5
Soil temperature (°C)	12	10.8	9.6	8.7
Growth Rate (kg DM/day)	30	29	10	21
Rainfall	56	30	80	168
Conditions for farmwalk	Rain strong winds farm very wet	Warm fine Magic day		Shocker !!!! Rain hail sleet & gale force winds
Comments				

NB: pasture quality data are for 1 sample collected from each farm

Weekly Pasture Growth Rates

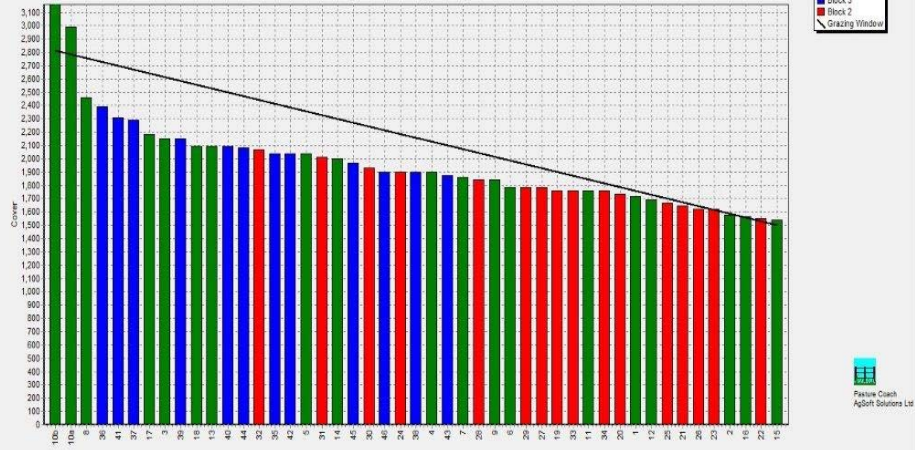


Weekly Soil Temperature



Westport

Farm Name: ADRIAN & CHERYL GALLAGHER
 Date Read: 9/5/2016
 Average Cover: 1942 Kg DM/ha
 Average Growth: 30 Kg DM/ha/Day



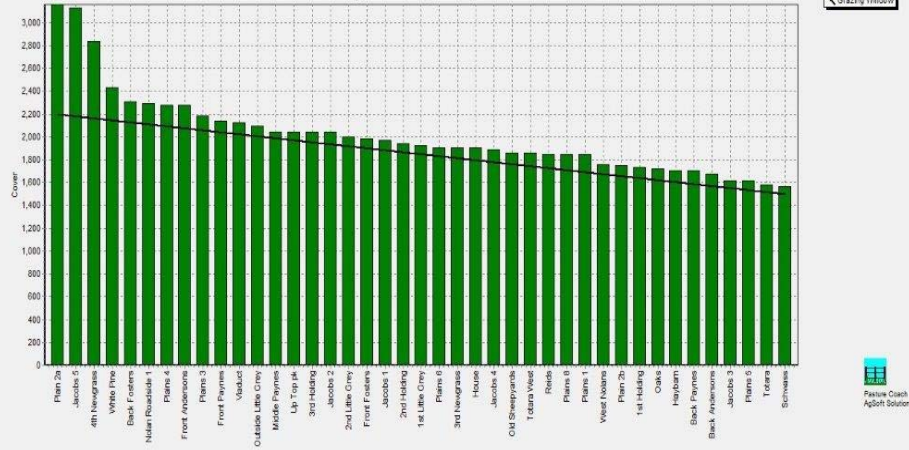
Block 1
 Block 2
 Grazing Window



1500 Residual 2810 Pre-grazing Save Print Sort Order Tools Rotation Calc Zoom In Zoom Out Zoom 100%

Ikamatua

Farm Name: ANDREW & NIKI MIRFIN
 Date Read: 9/9/2016
 Average Cover: 1996 Kg DM/ha
 Average Growth: 29 Kg DM/ha/Day



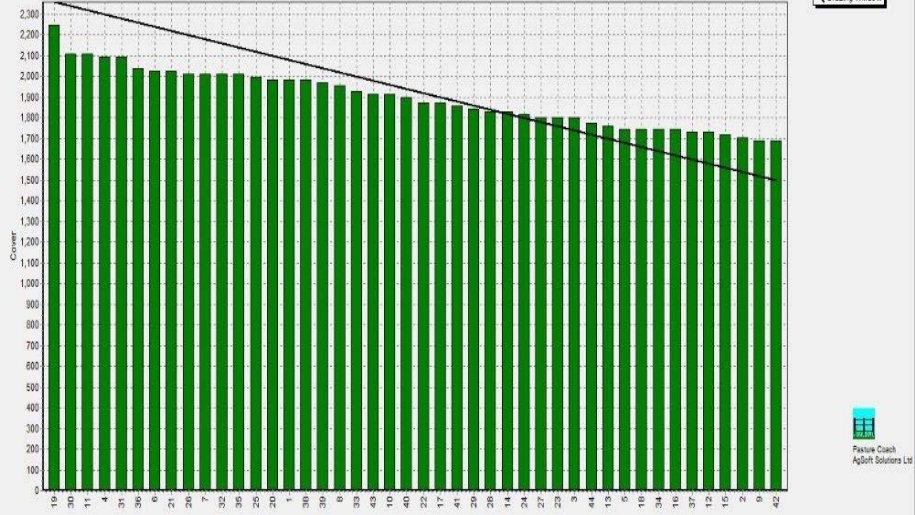
Block 1
 Grazing Window



1500 Residual 2194 Pre-grazing Save Print Sort Order Tools Rotation Calc Zoom In Zoom Out Zoom 100%

Greymouth

Farm Name: ANDREW ROBB
 Date Read: 9/9/2016
 Average Cover: 1896 Kg DM/ha
 Average Growth: 10 Kg DM/ha/Day



Block 1
 Grazing Window



1500 Residual 2260 Pre-grazing Save Print Sort Order Tools Rotation Calc Zoom In Zoom Out Zoom 100%

Kowhitirangi

