

## Westland Monitor Farm Project

Weekly Update 9 June 2016

### CO comment

Most herds are now dry and the winter grazing plan should now be in place. Keep an eye on the feed wedge over the winter and manage the round length accordingly. The paddocks grazed early in the winter are likely to be those calved on or milked off early next season, so the grazing pressure and timing of grazing will be important. Think about those areas of the farm that might be targeted for early applications of nitrogen next month - are they the ones that will generate the best responses? When will it be best to graze these areas through the winter? The winter plan should be in place now and careful management and monitoring will be needed to ensure you hit the targets that have been put in place. On the staff front use any down time on the farm, now the cows are being wintered, to either sort out essential maintenance or take a break. It is an ideal time to get away – and for your staff to have a break as, well, so everyone is fresh come calving.

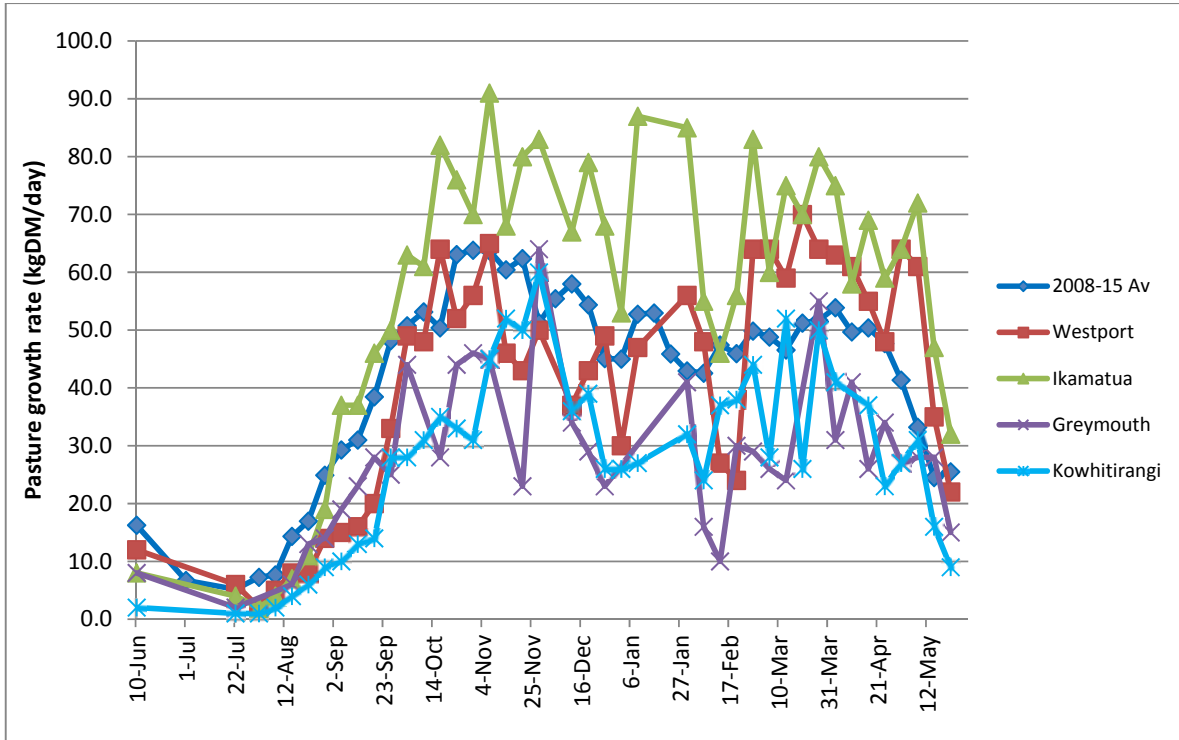
### Farm Summary

	Westport	Ikamatua	Greymouth	Kowhitirangi
Average cover (kg DM/ha)	2254	2178		1882
APC (2 June 2016)	2222	2196	1919	1878
Rotation length (days)	160	200		
Stocking rate				
Percentage in milk	0	0	0	0
Milksolids kg/cow	0.0	0.0	0.0	0.0
Milksolids kg/ha	0.0	0.0	0.0	0.0
MS/cow (season to date)	446	399	424	337
MS/ha (season to date)	1183	999	999	743
N (kg/ha) year to date	230	348	332	119
Current N application rate kg N/ha	15	None	None	None
	6/5/16	6/5/16		6/5/16
DM%	10.6	12		12.4
Pasture ME	>12.7	12.6		12.7
Pasture NDF	49.2	45.7		45
Pasture CP	31.7	31.0		32.3
Target Intake (kg DM/cow/d)	14	14		5
Supplement (kg/cow/day)	2.3			
Soil temperature (°C)		7		
Growth Rate (kg DM/day)	14	14		5
Rainfall			19	
Conditions for farmwalk	Beautiful fine cold wind	Big frost beautiful fine clear day		Frost then fine day

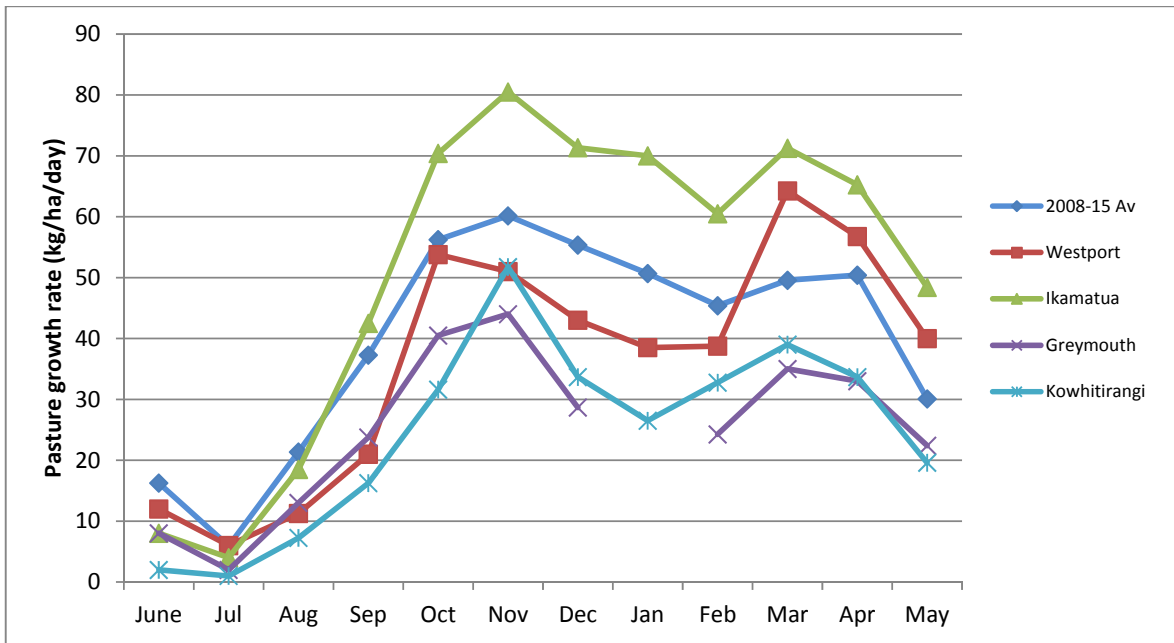
Comments	210 cows on farm over winter	250 cows on farm over winter	975 cows on farm over winter Stand off pad & silage No farm walk this week	All cows on farm
----------	------------------------------	------------------------------	--	------------------

NB: pasture quality data are for 1 sample collected from each farm

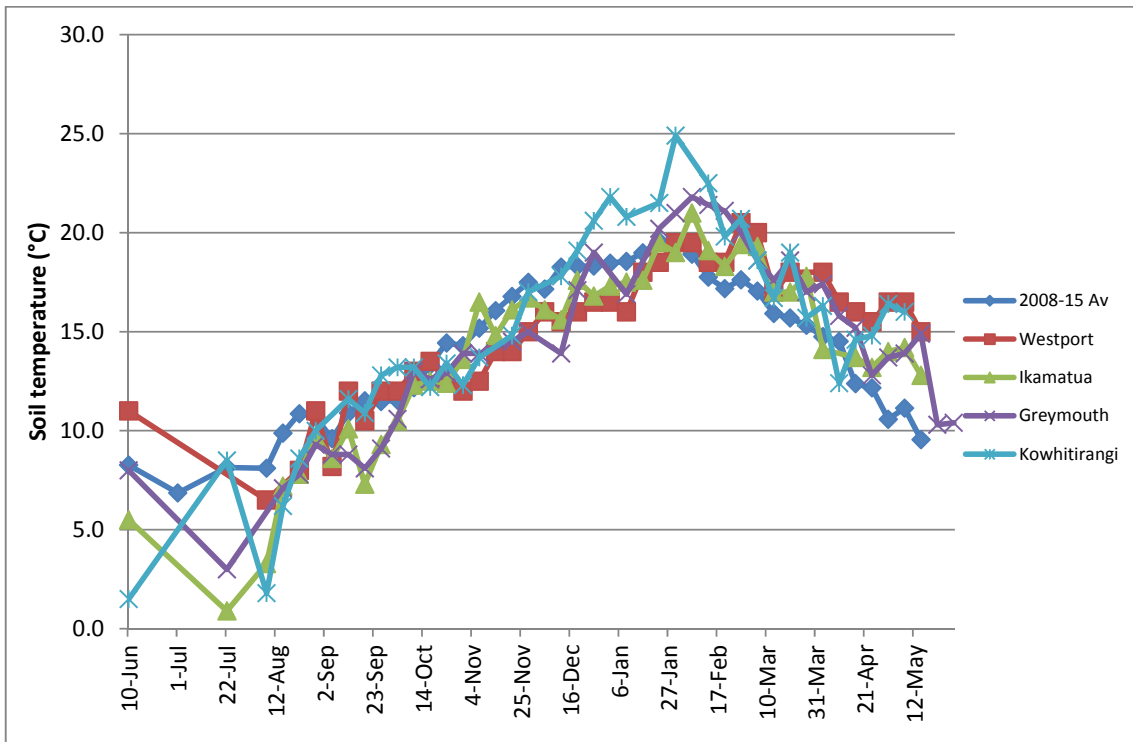
Weekly Pasture Growth Rates



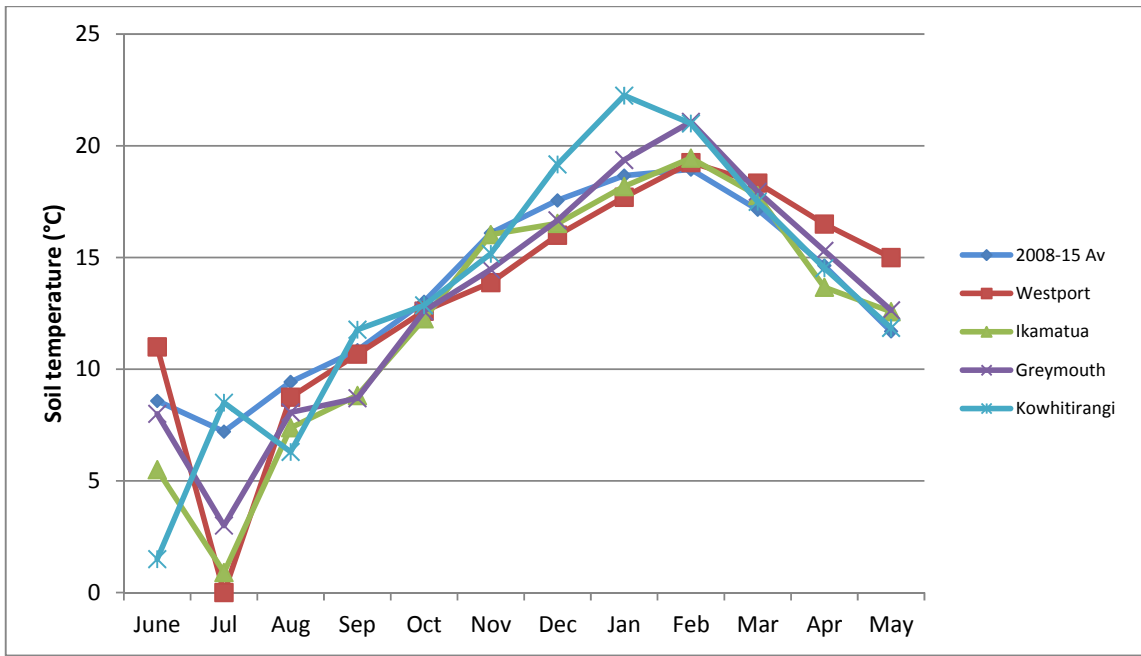
Monthly Pasture Growth Rates



Weekly Soil Temperature



Monthly Soil Temperature



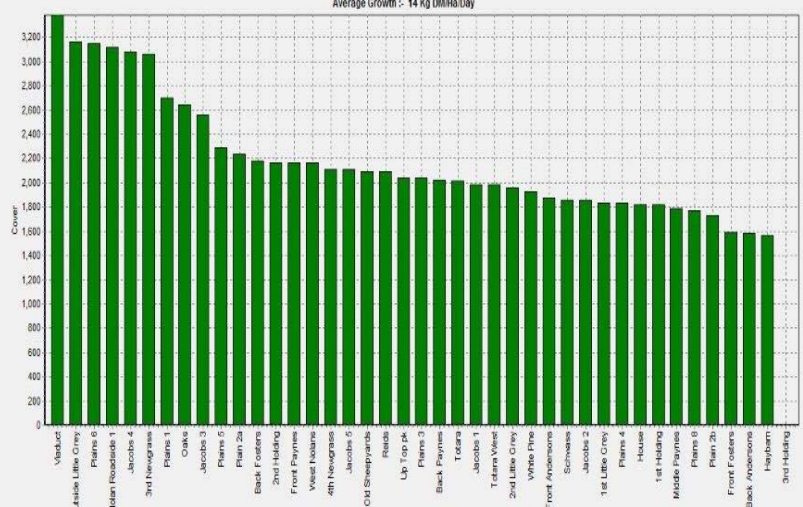
### Westport

Farm Name: ADRIAN & CHERYL GALLAGHER  
 Date Read: 06/2016  
 Average Cover: 2254 Kg DM/ha  
 Average Growth: 14 Kg DM/ha/Day



### Ikamatua

Farm Name: ANDREW & NIKI MURFIN  
 Date Read: 07/2016  
 Average Cover: 2170 Kg DM/ha  
 Average Growth: 14 Kg DM/ha/Day



### Greymouth

### Kowhitirangi

Farm Name: TANE & RACHEL LITTLE  
 Date Read: 6/8/2016  
 Average Cover: 1882 Kg DM/ha  
 Average Growth: 5 Kg DM/ha/Day

