

# Westland Monitor Farm Project

Weekly Update 13 April 2017

## CO comment

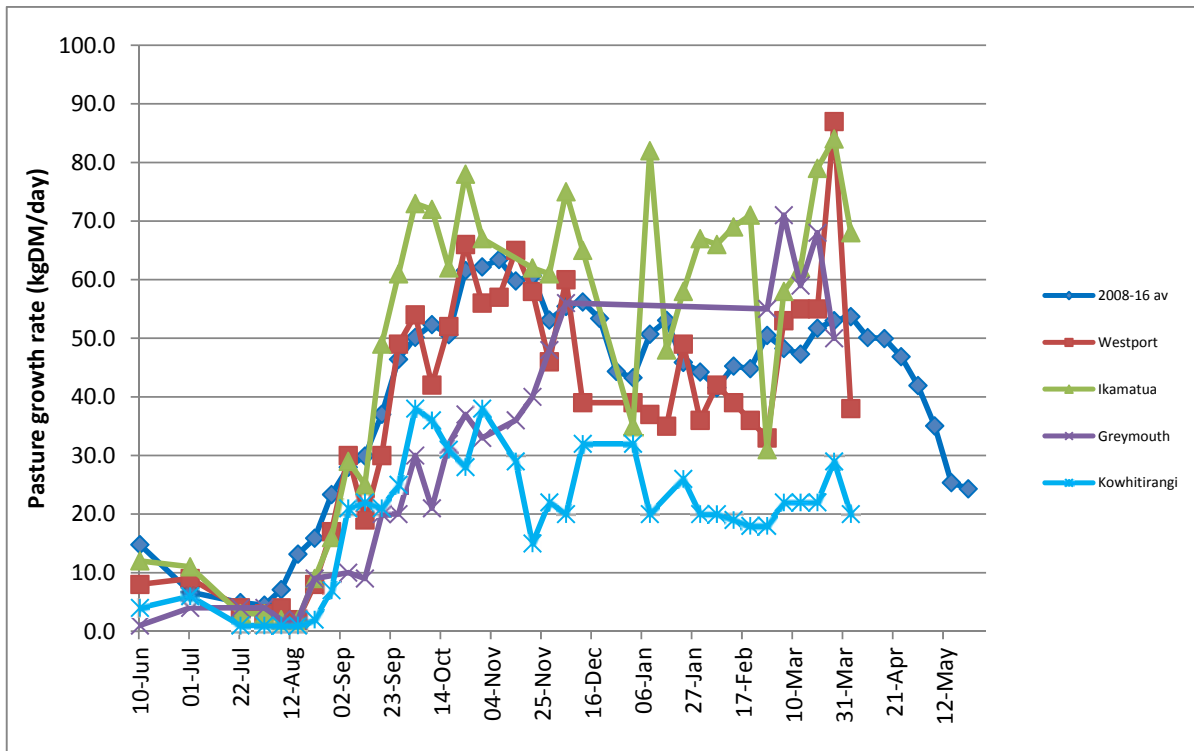
The end of the season isn't that far away now and a lot of the focus has been going on the milking cows and what's important for them at this stage of the season, but what about the replacement heifers? How are they tracking? Regular weighing (or at the least, an assessment) of the replacement heifers goes a long way to ensuring that they hit their targets. But weighing by itself doesn't make them any heavier. You need to be using an interpretive tool such as MINDA Weights to provide feedback against what the animals could potentially weigh. Once you've determined the weights of the animals in the mob, you need to identify any that are below target and put in place a strategy to make sure they are able to meet the target mating weights. Use all the information you can to formulate your strategy – your 2016 Fertility Report is a good place to start to identify any problem areas that may need to be improved. The pay-off is clear – well grown heifers that hit target weights will be more likely to get in-calf in the first 6 weeks of mating, have a longer lactation, re-conceive more readily as 3 year olds and as a result be more profitable over their lifetime. If you are interested in viewing the Expanded Weekly Summary of the monitoring results, follow this link [West Coast Monitor Farm Full Summary](#)

## Farm Summary

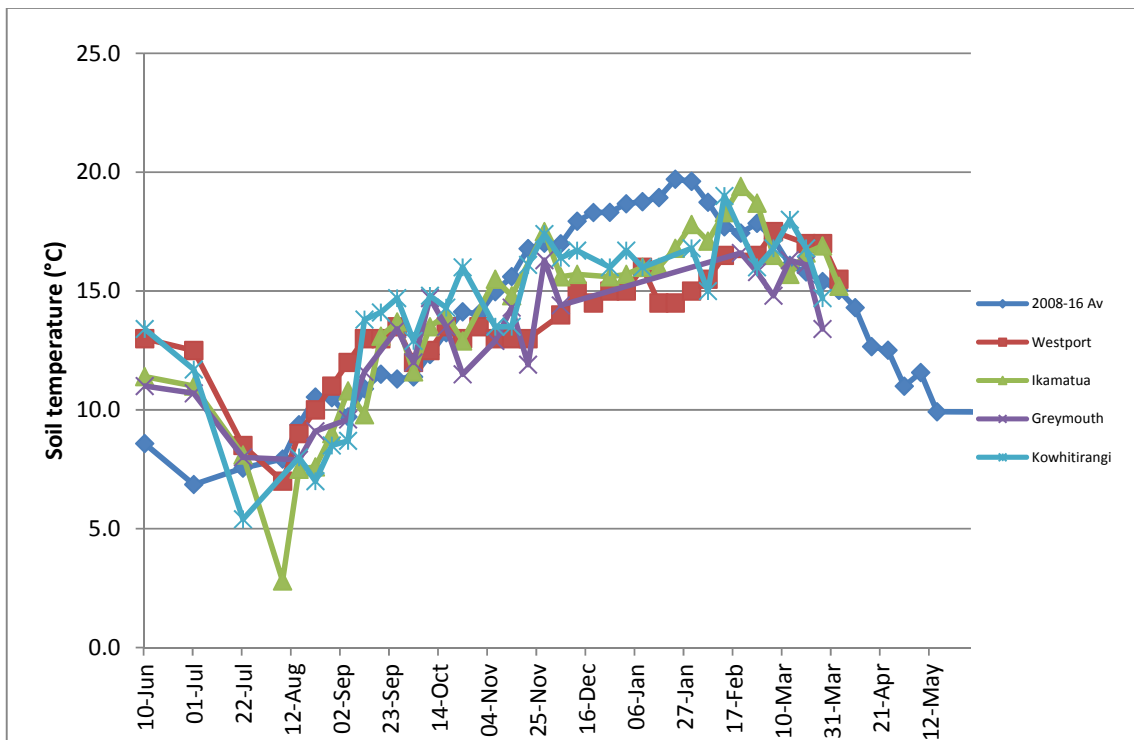
	Westport	Ikamatua	Greymouth	Kowhitirangi
Average cover (kg DM/ha)	2161	2219		1992
APC (6 April)	2195	2262	2308	1971
Rotation length (days)	21	25		
Stocking rate				
Percentage in milk	88	94	95	85
Milksolids kg/cow	1.47	1.59		1.17
Milksolids kg/ha	3.9	4.0		2.4
MS/cow (season to date)	349	373		299
MS/ha (season to date)	1023	995		714
N (kg/ha) year to date	156	211		50
Current N application rate kg N/ha	15	25		20
	10 Mar	10 Mar		10 Mar
DM%	15.2	13.2		19.3
Pasture ME	12.2	12.5		12
Pasture NDF	52.3	41.2		51.2
Pasture CP	28.3	31.3		22.1
Target Intake (kg DM/cow/d)	18	18		16
Supplement (kg/cow/day)	1.0	1.5		1.0
Soil temperature (°C)	15.5	15.2		
Growth Rate (kg DM/day)	38	68		20
Rainfall	10	13		112
Conditions for farmwalk	Fine, warm	Showers		Fine, been heavy rain
Comments				

NB: pasture quality data are for 1 sample collected from each farm

### Weekly Pasture Growth Rates

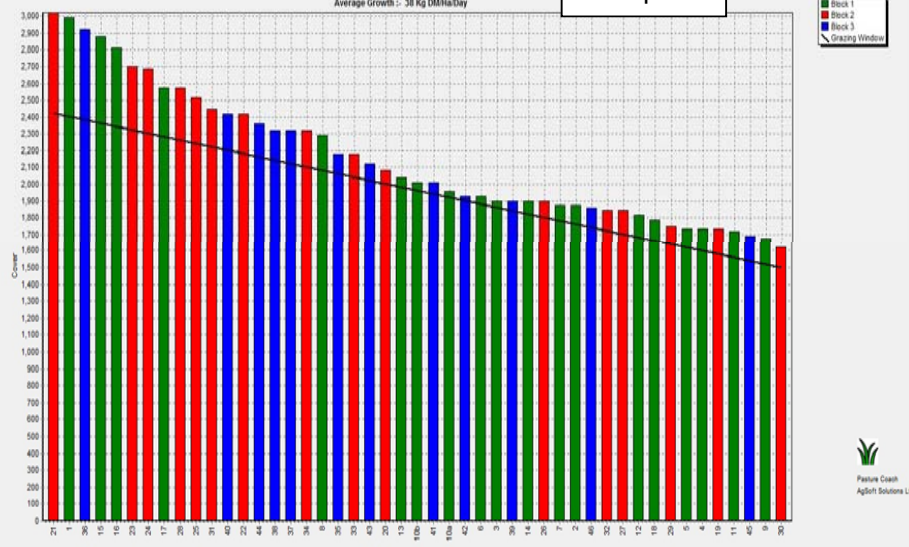


### Weekly Soil Temperature



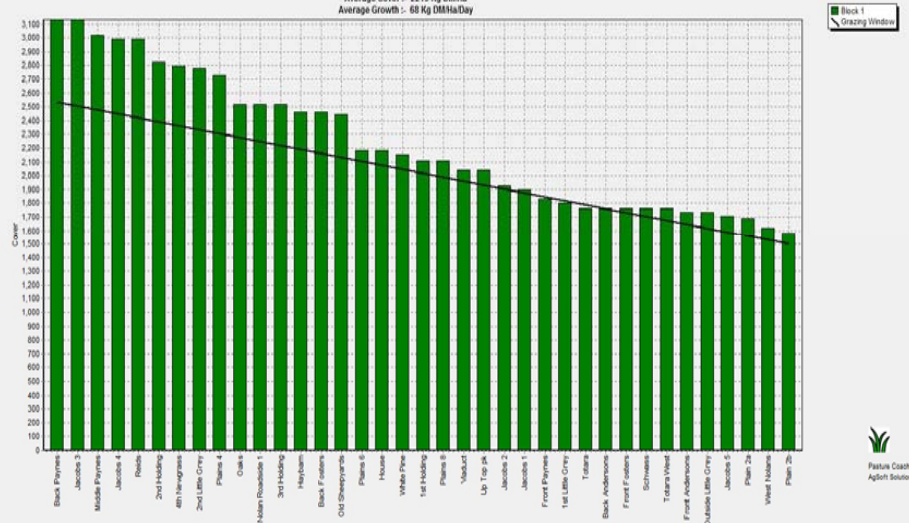
### Westport

Farm Name: ADRIAN & CHERYL GALLAGHER  
 Date Read: 10/04/2017  
 Average Cover: 2161 Kg DM/ha  
 Average Growth: 38 Kg DM/ha/Day



### Ikamatua

Farm Name: ANDREW AND MIRI  
 Date Read: 11/04/2017  
 Average Cover: 2219 Kg DM/ha  
 Average Growth: 68 Kg DM/ha/Day



### Greymouth

### Kowhitirangi

Farm Name: TANE & RACHEL LITTLE  
 Date Read: 12/04/2017  
 Average Cover: 1992 Kg DM/ha  
 Average Growth: 20 Kg DM/ha/Day









